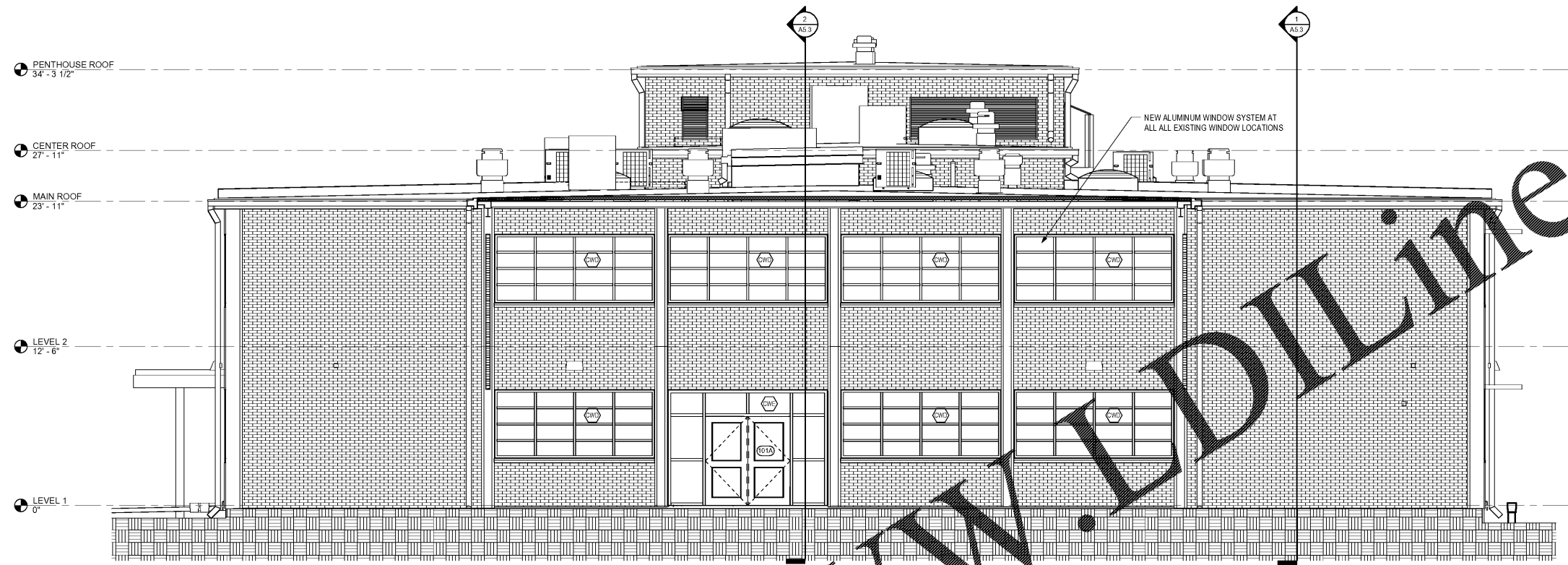
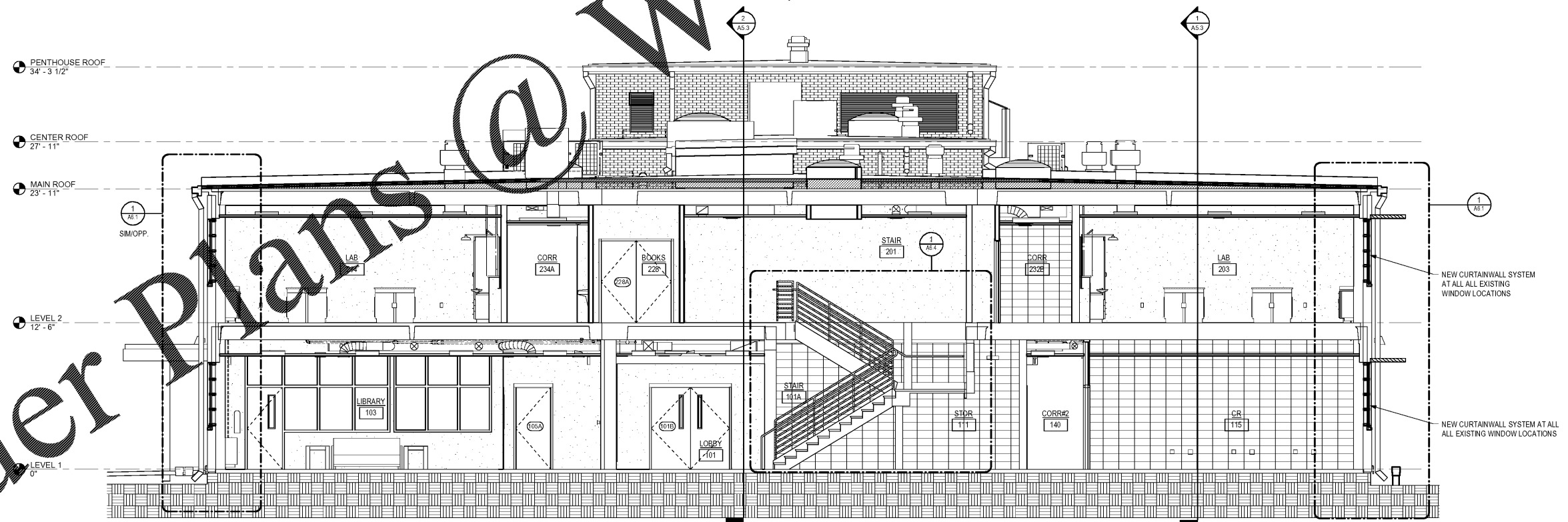


NO	REVISION / SUBMISSIONS	DATE



1 THRU COVERED FRONT ENTRANCE
A5.1 SCALE: 1/4" = 1'-0"



2 THRU WEST STAIR TOWER
A5.1 SCALE: 1/4" = 1'-0"

JOHN A. TUTEN & ASSOCIATES
ARCHITECTS
4680 U.S. HIGHWAY 17
BRUNSWICK, GEORGIA 31525
www.jatuten.com

GLYNN ACADEMY HIGH SCHOOL
SCIENCE BLDG. (5015) MODERNIZATION
1001 MANSFIELD ST. BRUNSWICK GA, 31520
GLYNN COUNTY BOARD OF EDUCATION

CAPITAL OUTLAY
PROJECT # TRD
SYSTEM CODE: 663
SCHOOL CODE: 4752
FTE: 1796

BUILDING SECTIONS



ISSUED FOR:
BID SET

DRAWN BY:
CHECKED BY:
APPROVED BY:
01/19/19
PROJECT DATE:
1802
PROJECT NUMBER

SHEET NUMBER:
A5.1

Copyright (c) 2019
All Rights Reserved

1/18/2019 11:23:55 C:\Users\jmt\Documents\Revit\Local1802\GA Science Building\1802 Science Building.rvt

Order Plans @ WWW.ArchLine.com