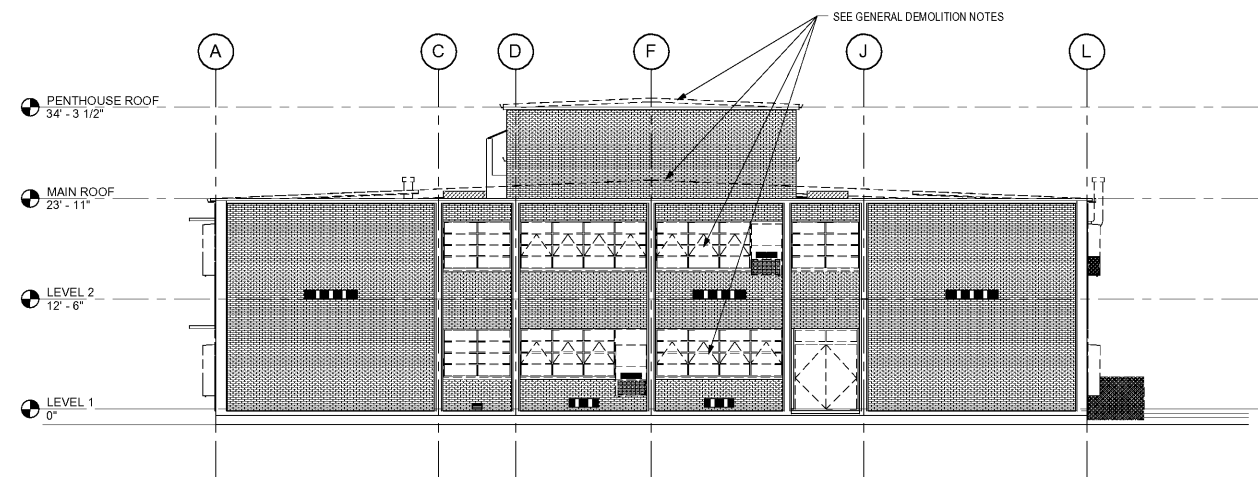
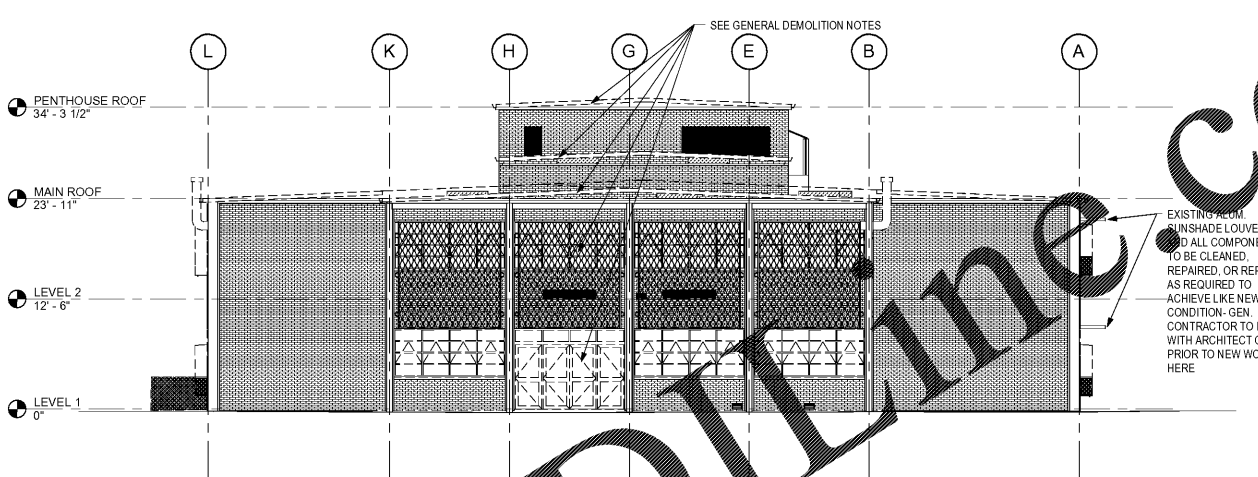


NO	REVISION / SUBMISSIONS	DATE

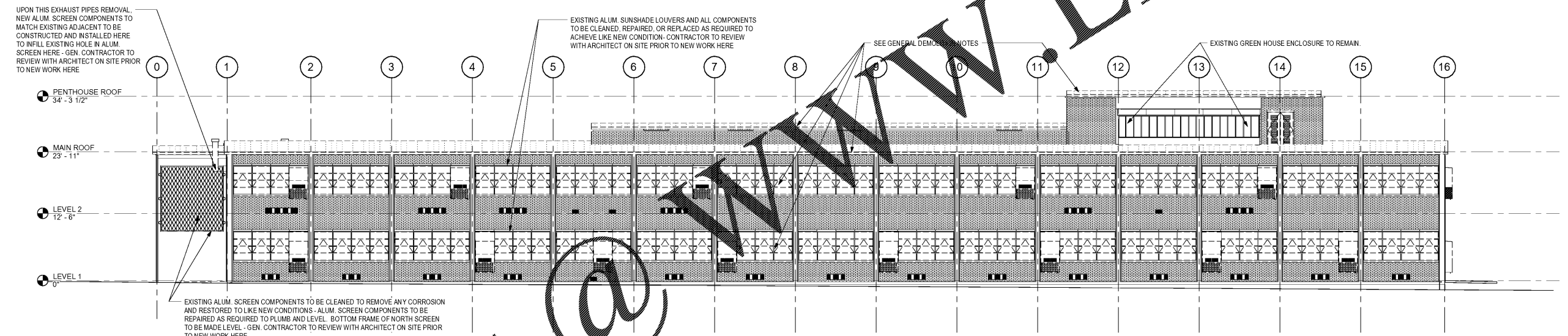


1 EAST ELEVATION - DEMOLITION
 D1.4 SCALE: 1/8" = 1'-0"
SEE DEMOLITION NUMBERED NOTES ON DEMOLITION FLOOR PLANS



2 WEST ELEVATION - DEMOLITION
 D1.4 SCALE: 1/8" = 1'-0"
SEE DEMOLITION NUMBERED NOTES ON DEMOLITION FLOOR PLANS

EXISTING ROOM
 UNSHADE LOUVERS
 TO ALL COMPONENTS
 TO BE CLEANED,
 REPAIRED, OR REPLACED
 AS REQUIRED TO
 ACHIEVE LIKE NEW
 CONDITION - GEN.
 CONTRACTOR TO REVIEW
 WITH ARCHITECT ON SITE
 PRIOR TO NEW WORK
 HERE

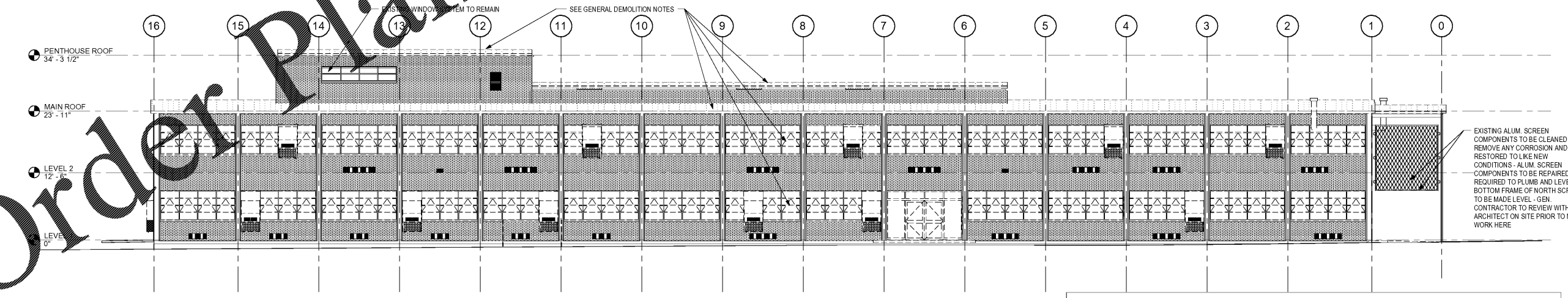


3 SOUTH ELEVATION - DEMOLITION
 D1.4 SCALE: 1/8" = 1'-0"
SEE DEMOLITION NUMBERED NOTES ON DEMOLITION FLOOR PLANS

EXISTING ALUM. SCREEN COMPONENTS TO BE CLEANED TO REMOVE ANY CORROSION
 AND RESTORED TO LIKE NEW CONDITIONS - ALUM. SCREEN COMPONENTS TO BE
 REPAIRED AS REQUIRED TO PLUMB AND LEVEL. BOTTOM FRAME OF NORTH SCREEN
 TO BE MADE LEVEL - GEN. CONTRACTOR TO REVIEW WITH ARCHITECT ON SITE PRIOR
 TO NEW WORK HERE

EXISTING ALUM. SUNSHADE LOUVERS AND ALL COMPONENTS
 TO BE CLEANED, REPAIRED, OR REPLACED AS REQUIRED TO
 ACHIEVE LIKE NEW CONDITION - CONTRACTOR TO REVIEW
 WITH ARCHITECT ON SITE PRIOR TO NEW WORK HERE

EXISTING GREEN HOUSE ENCLOSURE TO REMAIN.



4 NORTH ELEVATION - DEMOLITION
 D1.4 SCALE: 1/8" = 1'-0"
SEE DEMOLITION NUMBERED NOTES ON DEMOLITION FLOOR PLANS

EXISTING ALUM. SCREEN
 COMPONENTS TO BE CLEANED TO
 REMOVE ANY CORROSION AND
 RESTORED TO LIKE NEW
 CONDITIONS - ALUM. SCREEN
 COMPONENTS TO BE REPAIRED AS
 REQUIRED TO PLUMB AND LEVEL
 BOTTOM FRAME OF NORTH SCREEN
 TO BE MADE LEVEL - GEN.
 CONTRACTOR TO REVIEW WITH
 ARCHITECT ON SITE PRIOR TO NEW
 WORK HERE

Order Plans @ www.worldwideblueprints.com

JOHN A. TUTEN & ASSOCIATES
 ARCHITECTS
 4680 U.S. HIGHWAY 17
 BRUNSWICK, GEORGIA 31525
 www.jatuten.com

GLYNN ACADEMY HIGH SCHOOL
 SCIENCE BLDG. (5015) MODERNIZATION
 1001 MANSFIELD ST. BRUNSWICK GA, 31520
 GLYNN COUNTY BOARD OF EDUCATION

CAPITAL OUTLAY
 PROJECT # TRD
 SYSTEM CODE: 663
 SCHOOL CODE: 4752
 FTE: 1796

EXTERIOR ELEVATIONS - DEMOLITION



ISSUED FOR:
 BID SET

DRAWN BY:
 CHECKED BY:
 APPROVED BY:
 01/19/19
 PROJECT DATE:
 1802
 PROJECT NUMBER

SHEET
 NUMBER:
 D1.4

Copyright (c) 2019
 All Rights Reserved

1/18/2019 11:27:07 C:\Users\jmt\Documents\Revit\Local1802\GA_Science Building\1802_Science Building.dwg