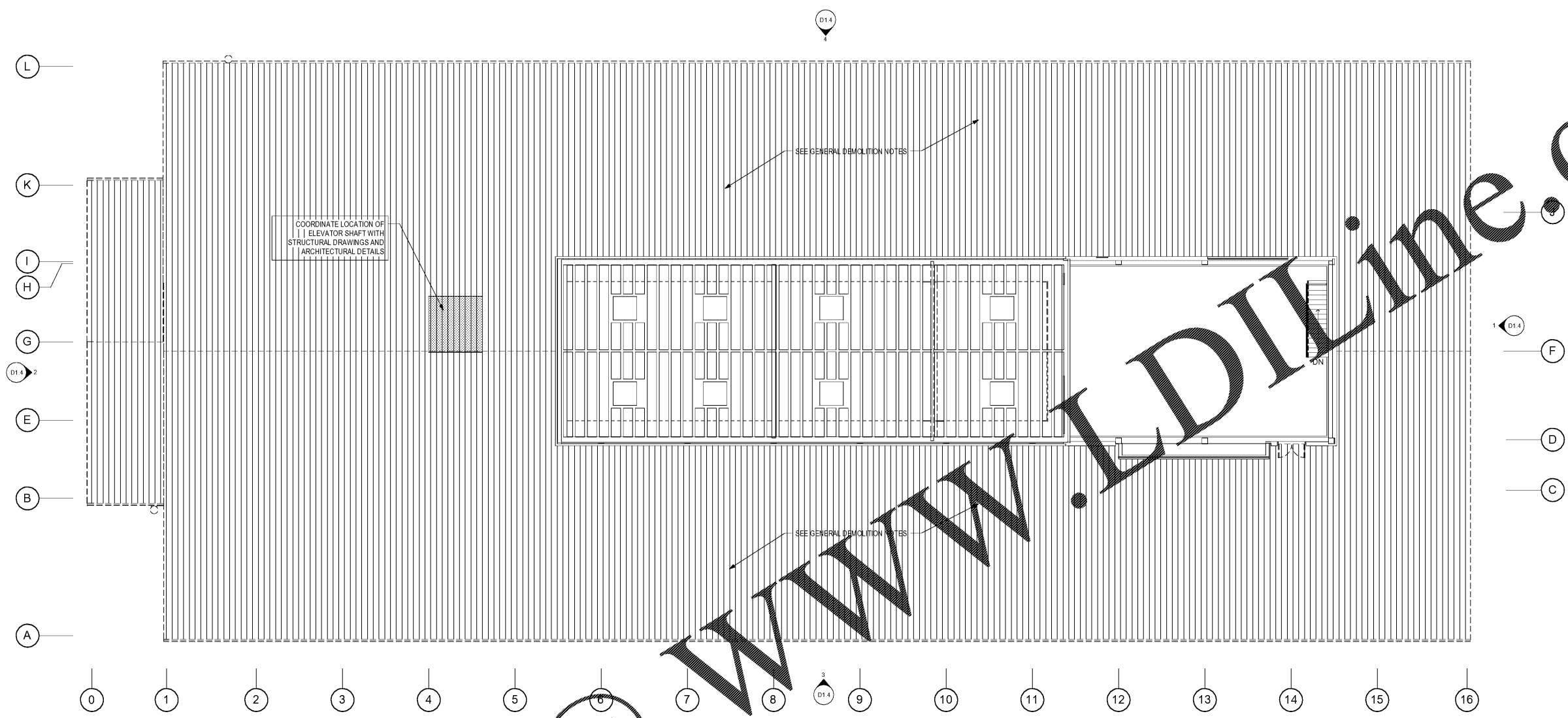


NO	REVISION / SUBMISSIONS	DATE



1 PENTHOUSE FLOOR PLAN - DEMOLITION
 D1.3 SCALE: 1/8" = 1'-0"

GENERAL DEMOLITION NOTES

- REMOVE ALL EXISTING PLUMBING, HVAC AND ELECTRICAL SYSTEMS AND COMPONENTS OF THE BUILDING. REMOVE ALL DEVICES, BOXES, CONTROLS, BRACKETS AND FITTINGS FROM INTERIOR AND EXTERIOR SURFACES. PATCH BRICK MASONRY, CONCRETE MASONRY, WOOD AND ALL SURFACE MATERIALS WHERE DEVICES ARE REMOVED TO MATCH ADJACENT FINISHED MATERIALS OF SAME COMPOSITION.
- REFER TO CIVIL DRAWINGS FOR ADDITIONAL REQUIREMENTS RELATED TO DEMOLITION.
- REMOVE COMPLETELY EXISTING HVAC SYSTEMS. COVER WINDOW OPENINGS AND ALL OTHER BUILDING ENVELOPE OPENINGS TO PREVENT AIR INLEAKAGE. REMOVE EXISTING SYSTEMS TO KEEP BUILDING WATER TIGHT.
- REMOVE COMPLETELY EXISTING ELECTRICAL SYSTEMS. **LOW VOLTAGE SYSTEMS (SEE EXISTING DATA ROOM INFORMATION FOR LISTING)** HOWEVER, KEEP EXISTING LIGHTING SYSTEMS IN SERVICE UNTIL NEW TEMPORARY LIGHTS ARE INSTALLED.
- REMOVE ALL EXISTING DOORS UNLESS NOTED OTHERWISE. ALL DOOR FRAMES TO REMAIN UNLESS NOTED OTHERWISE. SEE DOOR SCHEDULE FOR ADDITIONAL INFORMATION.
- REMOVE ALL EXISTING EXTERIOR WINDOW SYSTEMS UNLESS NOTED OTHERWISE. COVER WINDOW OPENINGS AND ALL OTHER BUILDING ENVELOPE OPENINGS CREATED BY REMOVING EXISTING EXTERIOR WINDOW SYSTEMS TO KEEP BUILDING WATER TIGHT.
- REMOVE EXISTING LOW SLOPED METAL ROOFING SYSTEM OVER MAIN ROOF, PORCH ROOF AND PENTHOUSE ROOF TO EXISTING CONCRETE SURFACE IN PREPARATION FOR NEW ROOFING SYSTEM.
- REMOVE CLASSROOM MILLWORK INCLUDING, BUT NOT LIMITED TO, CABINET AND CASE, TEACHER CABINETS, STORAGE CABINETS, SHELVING UNITS, BOOKCASE, BASE AND OVERHEAD CABINETS. WHERE INDICATED, REPAIR HOLES OR OTHER DAMAGES TO WALL SURFACES AND STRUCTURE.
- REMOVE EXISTING CHALK MARKER BOARD, STRIPS, COMPLETLY INCLUDING BOARD, TRIM AND ADHESIVE. REMOVE ALL BOARDS IN ONE CLASSROOM.
- REMOVE EXISTING WALL HUNG TV'S INCLUDING MOUNTING HARDWARE, ELECTRICAL BOXES AND WIRING.
- REMOVE EXISTING SUSPENDED CEILING AND GRID SYSTEMS COMPLETELY INCLUDING WALL MOLD, CEILING GRID, CEILING TILE, SUPPORT WIRES, ATTACHMENT DEVICES AND RELATED ITEMS.
- THE CONTRACTOR SHALL HAVE THE OWNER REVIEW EQUIPMENT. REMOVE EQUIPMENT SELECTED BY OWNER FOR SALVAGE TO BE TURNED OVER TO OWNER, CONTRACTOR TO STORE IN OFF-SITE LOCATION DESIGNATED BY OWNER. EQUIPMENT NOT SELECTED BY OWNER FOR SALVAGE SHALL BECOME THE PROPERTY OF THE CONTRACTOR. THE CONTRACTOR SHALL DISPOSE OF SUCH EQUIPMENT IN A LEGAL MANNER OFF SITE.

DEMOLITION NUMBERED NOTES

- REMOVE EXISTING PARTITION.
- REMOVE EXISTING TOILET PARTITIONS.
- REMOVE EXISTING COUNTERTOP AND ANY BASE OR UPPER CABINETS.
- REMOVE EXISTING SINK.
- REMOVE EXISTING URINAL(S).
- REMOVE EXISTING TOILET(S).
- REMOVE EXISTING DRINKING FOUNTAIN.
- REMOVE EXISTING LOCKER(S). REVIEW COURSE OF ACTION WITH ARCHITECT REGARDING EXISTING CONCRETE BASE.
- REMOVE EXISTING LAB TABLES AND ALL SUPPORTING UTILITY CONNECTIONS.
- REMOVE EXISTING LIBRARY SHELVING UNITS AS INDICATED IN THE DEMOLITION PLAN.
- REMOVE EXISTING COMPUTER STATION FURNITURE AT EACH EXISTING ROUND CONCRETE COLUMN.
- REMOVE EXISTING COMPUTER DESKS.
- REMOVE EXISTING WINDOW SYSTEM AND RELATED WALL.
- REMOVE EXISTING CENTER PORTION BETWEEN SCIENCE ROOMS UNLESS NOTED OTHERWISE.
- REMOVE EXISTING WOODEN PLATFORM.
- REMOVE EXISTING HANDRAILS AND GUARDRAILS.
- REMOVE EXISTING CONCRETE SIDEWALK UNDER EXISTING CANOPY.
- REMOVE EXISTING CONCRETE SLAB.
- REMOVE EXISTING GLAZED TILE AND BEDDING BACK TO EXISTING COLUMN IN PREPARATION FOR NEW FINISHES.

Order Forms @ www.lldiline.com


JOHN A. TUTEN & ASSOCIATES
 ARCHITECTS
 4680 U.S. HIGHWAY 17 NORTH
 BRUNSWICK, GEORGIA 31525
 www.jatuten.com

GLYNN ACADEMY HIGH SCHOOL
SCIENCE BLDG. (5015) MODERNIZATION
 1001 MANSFIELD ST. BRUNSWICK GA, 31520
 GLYNN COUNTY BOARD OF EDUCATION

CAPITAL OUTLAY
 PROJECT # TBD
 SYSTEM CODE: 663
 SCHOOL CODE: 4752
 FTE: 1796

PENTHOUSE FLOOR PLAN - DEMOLITION



NOT VALID UNLESS ISSUED FOR:
 BID SET

DRAWN BY:
 CHECKED BY:
 APPROVED BY:
 01/19/19
 PROJECT DATE:
 1802
 PROJECT NUMBER

SHEET NUMBER:
D1.3
 Copyright (c) 2019
 All Rights Reserved