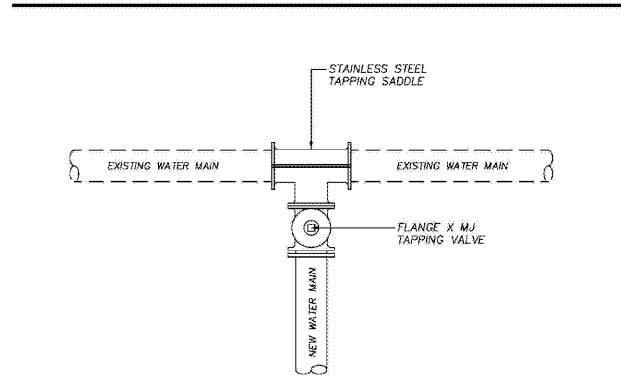
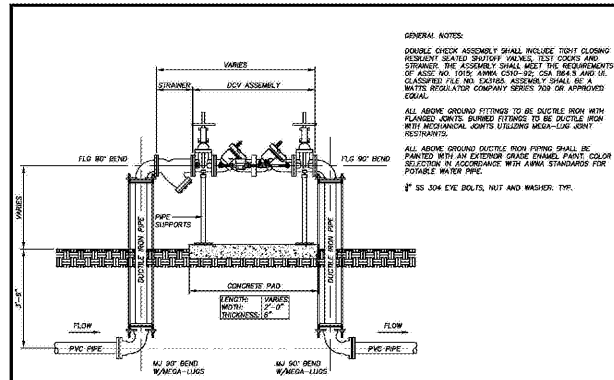


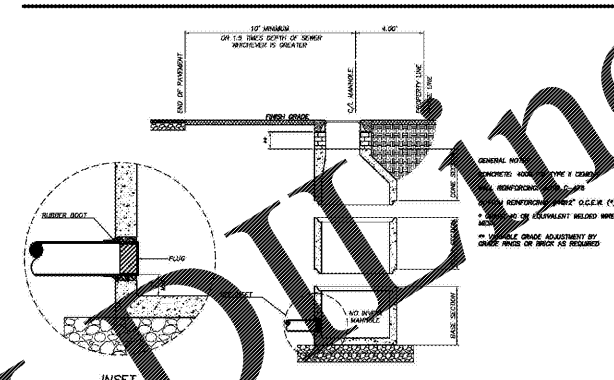
NO	REVISION / SUBMISSIONS	DATE



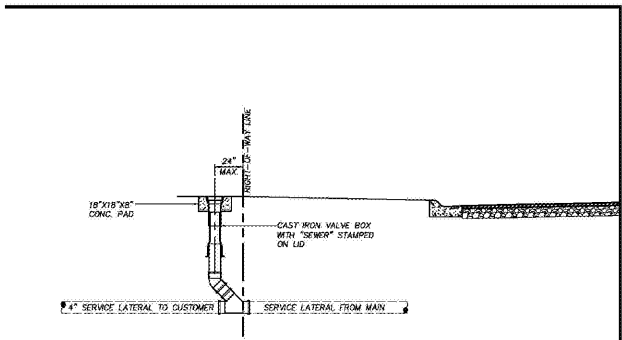
BRUNSWICK-GLYNN COUNTY JOINT WATER & SEWER COMMISSION  
**CONNECTION TO EXISTING WATER MAIN**  
 JWSC STANDARD DETAIL 2-15  
 NOT TO SCALE



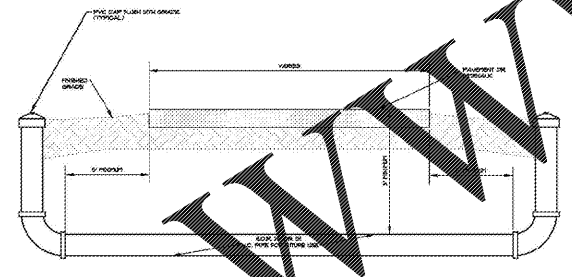
BRUNSWICK-GLYNN COUNTY JOINT WATER & SEWER COMMISSION  
**DOUBLE CHECK VALVE (DCV) ASSEMBLY**  
 3" THROUGH 10"  
 JWSC STANDARD DETAIL 2-28  
 NOT TO SCALE



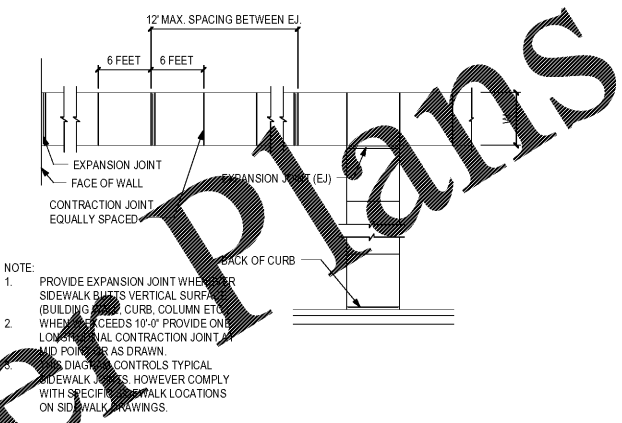
BRUNSWICK-GLYNN COUNTY JOINT WATER & SEWER COMMISSION  
**GRAVITY MAIN STUB OUT MANHOLE**  
 JWSC STANDARD DETAIL 3-1  
 NOT TO SCALE



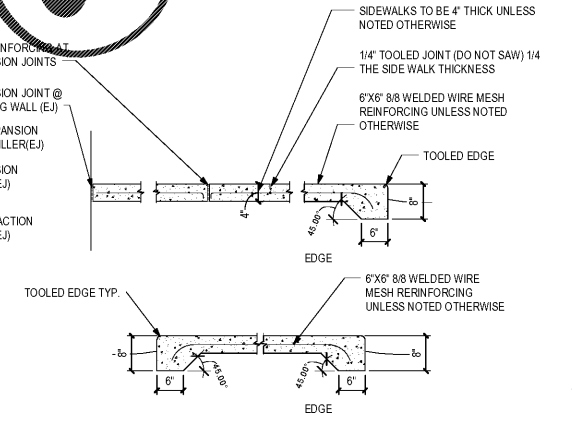
BRUNSWICK-GLYNN COUNTY JOINT WATER & SEWER COMMISSION  
**SEWER SERVICE - CLEANOUT**  
 JWSC STANDARD DETAIL 3-9  
 NOT TO SCALE



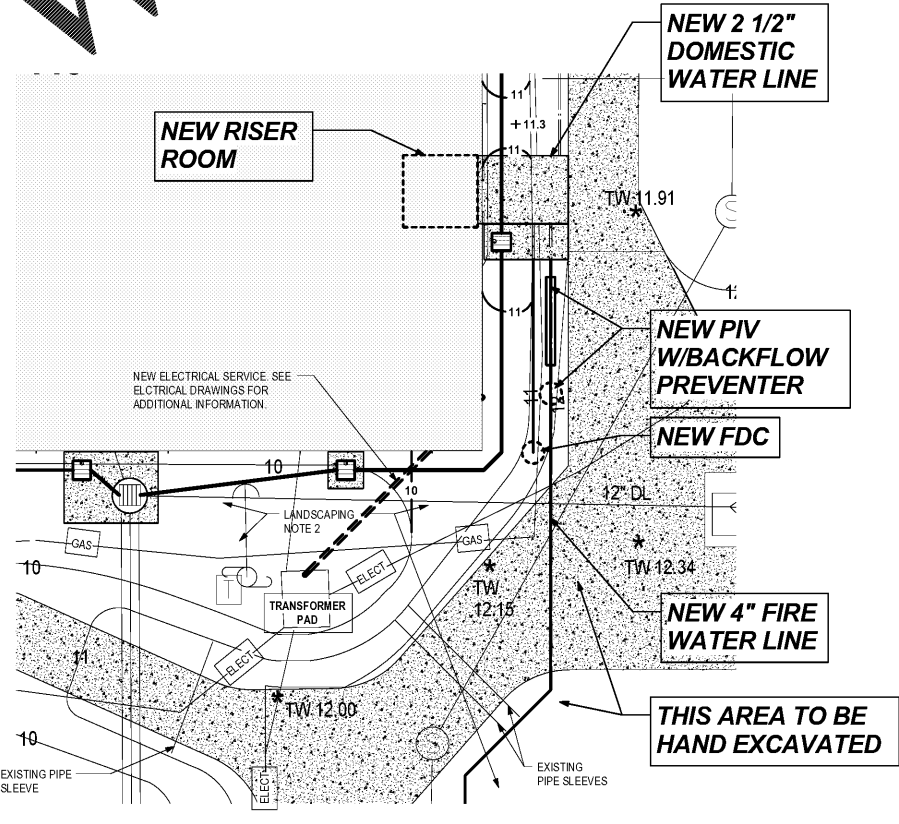
**SLEEVES**  
 NOT TO SCALE



**1 SIDEWALK JOINT DIAGRAM**  
 SCALE: 1/4" = 1'-0"



**2 SIDEWALK SECTIONS**  
 SCALE: 3/4" = 1'-0"



**3 SCIENCE BUILDING FIRE CONNECTION**  
 SCALE: 1/8" = 1'-0"

JOHN A. TUTEN & ASSOCIATES ARCHITECTS  
 4680 U.S. HIGHWAY 17 NORTH  
 BRUNSWICK, GEORGIA 31525  
 www.jatuten.com

GLYNN ACADEMY HIGH SCHOOL  
 SCIENCE BLDG. (5015)  
 MODERNIZATION  
 1001 MANSFIELD ST.  
 BRUNSWICK GA. 31520

CAPITAL OUTLAY PROJECT # 180 SYSTEM CODE: 663 SCHOOL CODE: 4752 FTE: 1790

SITE PLAN - ENLARGED AREAS

NOT VALID UNLESS SIGNED

ISSUED FOR: BID SET

Author: [Signature]  
 Drawn by: [Signature]  
 Checked by: [Signature]  
 Approved: [Signature]  
 APPROVED BY: 01/18/19 PROJECT DATE: 1802 PROJECT NUMBER: [Number]

**SHEET NUMBER: C1.3**

Copyright © 2019 All Rights Reserved

Order Plans

WWW.ADJLINE.COM