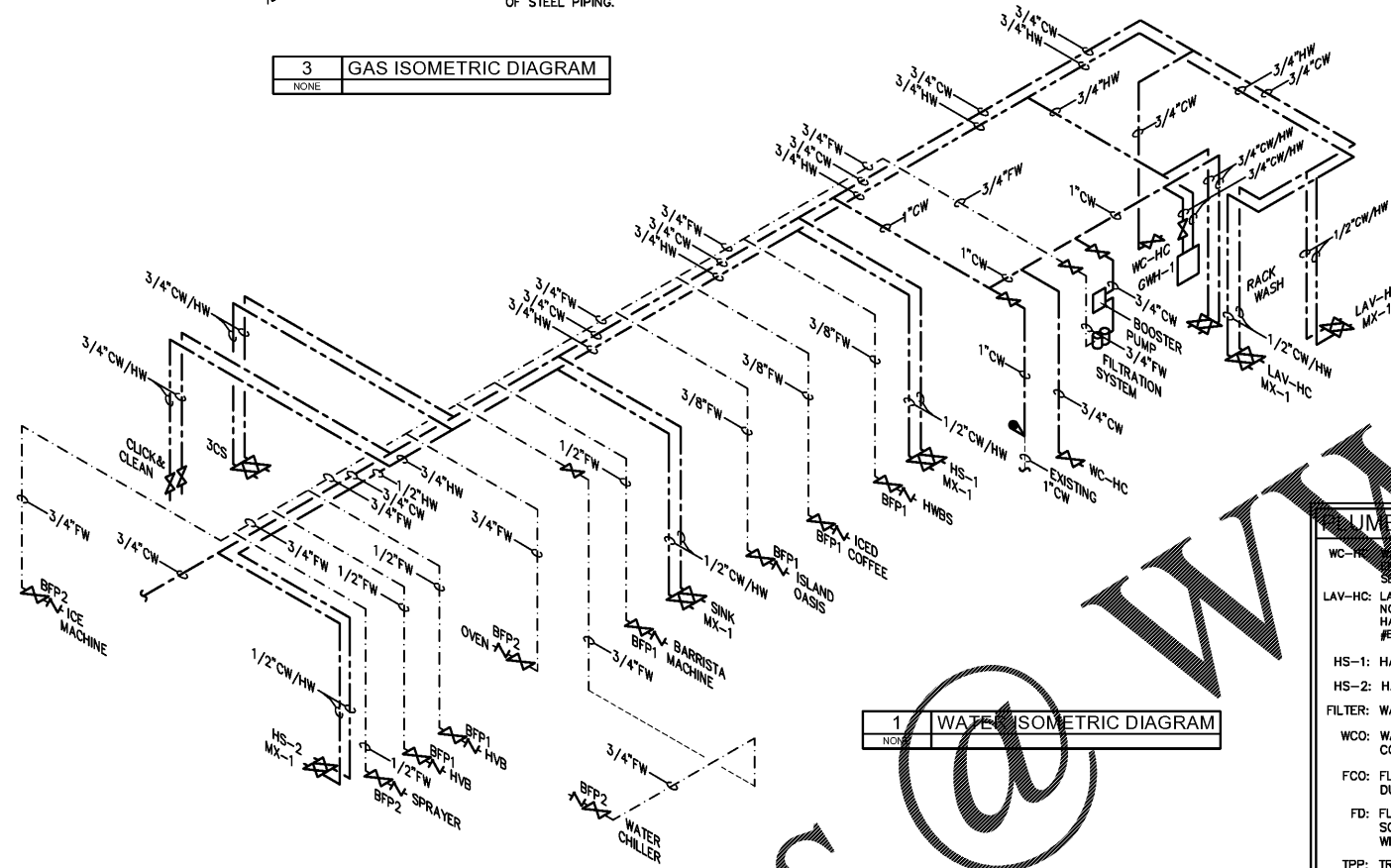


3 GAS ISOMETRIC DIAGRAM

NOTE:  
LIQUID PROPANE: MAXIMUM CAPACITY OF PIPE IN CUBIC FEET OF GAS PER HOUR FOR GAS PRESSURE OF 0.5 PSIG OR LESS AND A PRESSURE DROP OF 0.5 INCH WATER COLUMN FOR 100' OF STEEL PIPING.



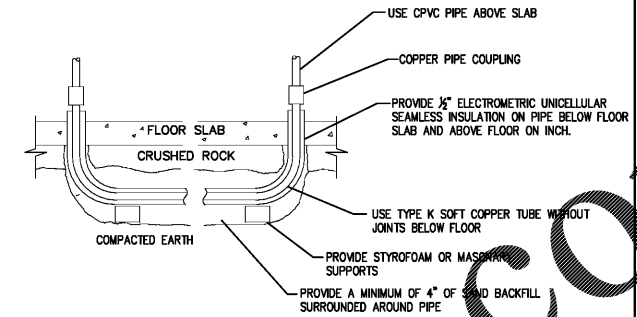
1 WATER ISOMETRIC DIAGRAM

PLUMBING FIXTURE SCHEDULE

- WC-1: WATER CLOSET - ADA - AMERICAN STANDARD NO.2467.016 RIGHT HEIGHT ELONGATED CADET PRESSURE ASSISTED. PROVIDE EVERCLEAN, OPEN FRONT SEAT NO. 5284.016.
- LAV-HC: LAVATORY - ADA - AMERICAN STANDARD LUCERNE NO. 0355.016. CONCEALED ARMS NO. 700-E BY J.R.SMITH CO. WITH ZURN NO. 7740 FAUCET WITH GRID DRAIN. OPTIONAL - HANDS FREE SLOAN - OPTIMA JET-600 WITH TRANSFORMER JEL-154 AND AERATOR JETEF1024-A.
- HS-1: HAND SINK - COUNTER MOUNTED.
- HS-2: HAND SINK - WALL MOUNTED.
- FILTER: WATER FILTRATION SYSTEM - SHEET P-4A & P-4B. SEE NATIONAL ACCOUNT.
- WCO: WALL CLEAN-OUT - ZURN, #Z-1441, SMOOTH STAINLESS STEEL ACCESS COVER, DURA-COATED CAST IRON BODY. MATCH TO PIPE SIZE.
- FCO: FLOOR CLEAN OUT - ZURN NO. Z-1444, POLISHED BRONZE ACCESS COVER, DURA COATED CAST IRON BODY. MATCH TO PIPE SIZE.
- FD: FLOOR DRAIN - ZURN Z-415-P WITH "TYPE B" ADJUSTABLE STRAINER TOP WITH SQUARE HEELPROOF OPENINGS AND SECURED GRATE. DURA COATED IRON BODY WITH TRAP PRIMER CONNECTION. SIZE TO PIPE SIZE.
- TPP: TRAP PRIMER SHALL BE MIFAB MI-300 ELECTRONIC TRAP SEAL PRIMER WITH AIR GAP, DISTRIBUTION UNIT WITH CONTROL PANEL. 120 VAC.
- SA: SHOCK ABSORBER - SHALL BE J.R.SMITH 5005 THRU 5050 AND SIZED AS RECOMMENDED BY MANUFACTURER.
- MX-1: MIXING VALVE - SYMONS 5-225-CK-PEX MAXLINE, ASSE 1070.
- FS-1: FLOOR SINK - JOSAM NO. 49000 WITH HALF GRATE, NICKALOY TOP AND SEDIMENT BUCKET.
- RACK WASH: PROVIDE 63.600A FAUCET, 65.700 HOSE & HOLDER AND 65.600 MOP HANGER.
- GWH-1: GAS WATER HEATER - RINNAI NO. RL94I TANKLESS, CONTINUOUS FLOW GAS FIRED SYSTEM. 199 CFH, 3/4" INLET / OUTLET. DIRECT VENT, FORCED COMBUSTION.
- BFP1: BACKFLOW PREVENTER - DUAL CHECK WITH VENT - WILKINS 740, ASSE 1022.
- BFP2: BACKFLOW PREVENTER - DUAL CHECK - WILKINS 700, ASSE 1024.
- BFP3: BACKFLOW PREVENTER - ASSE 1015.
- BP: BOOSTER PUMP - MCANN'S NO. 16-2173-DD WITH INTEGRAL PRESSURE GAUGE AND BYPASS. SEE NATIONAL ACCOUNT.

MATERIAL SPECIFICATIONS

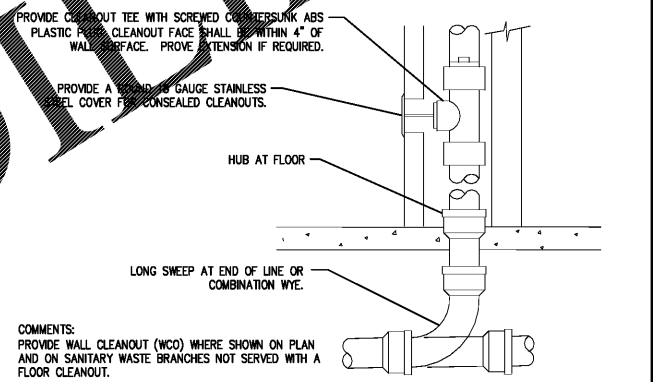
- DOMESTIC WATER PIPING SHALL BE CPVC AND TYPE L COPPER IN FIRE RATED WALL. PROVIDE 12 GA. TRACER WIRE ABOVE PIPE BELOW SLAB. HW PIPING SHALL BE INSULATED.
- SANITARY WASTE AND VENT PIPING SHALL BE SCHEDULE 40 PVC PIPE WITH SOLVENT FITTINGS. CONFORMING TO ASTM STANDARDS.
- PIPE INSULATION FOR DOMESTIC WATER SHALL BE 1" THICK, 3/4LB. DENSITY FIBERGLASS WITH VAPOR BARRIER JACKET. SEE ARCH PLANS FOR EXTERIOR WALL PLUMBING DETAIL.
- EQUIPMENT PLUMBING CONNECT TO BE MADE WITH FLEX LINE FROM LOCATION OF BACKFLOW PREVENTOR VALVE BEHIND EQUIPMENT AT MILLWORK WALL. SEE ARCH SHEET K1A FOR TYPICAL DETAIL.



- COMMENTS:
- IF FLOOR SLAB IS EXISTING, SAW CUT FLOOR, EXCAVATE AS REQUIRED, INSTALL PIPING, REPAIR BARRIER AND PATCH FLOOR AS REQUIRED.
  - PIPING TO HAVE LONG RADIUS TURNS WITH NO KINKS IN THE LINE.
  - THERE SHALL BE NO CONTACT OF COPPER PIPE WITH ANY OTHER PIPE, CONDUIT, OR REINFORCING STEEL.
  - SEPARATE HOT AND COLD WATER LINES BY 1/2" MINIMUM.

4 WATER PIPE UNDER SLAB

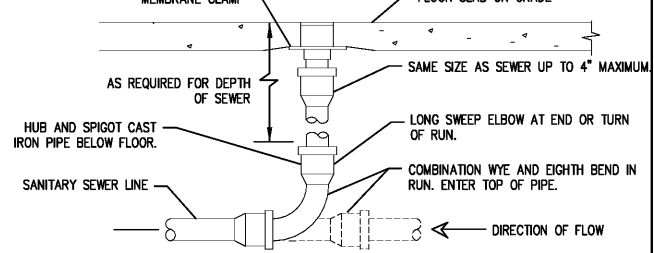
NONE



- COMMENTS:
- PROVIDE WALL CLEANOUT (WCO) WHERE SHOWN ON PLAN AND ON SANITARY WASTE BRANCHES NOT SERVED WITH A FLOOR CLEANOUT.

5 WALL CLEANOUT

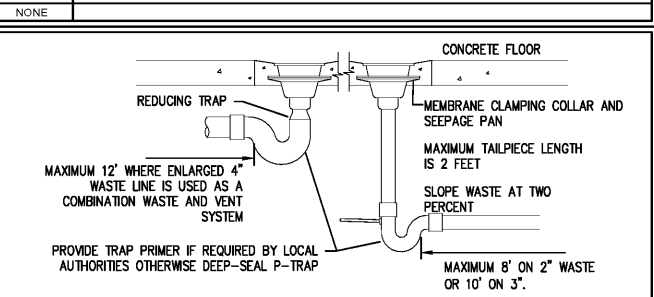
NONE



- COMMENTS:
- LOCATE AT BUILDING EXIT, AT ENDS OF RUNS, AT TURNS OF PIPE GREATER THAN 45 DEGREES, AT 50' INTERVALS ON STRAIGHT RUNS, AND/OR WHERE SHOWN ON PLANS. PROVIDE BACKFILL PER ARCHITECTURAL SPECIFICATIONS. LOCATE CLEANOUTS WHERE THERE IS 18" CLEAR AROUND. CONSULT LOCAL CODES FOR OTHER FCO REQUIREMENTS.
  - ROUND SECURED GASKETED NICKEL BRONZE ADJUSTABLE TOP WITH "CO" CAST IN COVER. PROVIDE CLEANOUT TOP WITH VARIATIONS SUITABLE FOR FLOOR COVERING (CARPET MARKER, RECESSED FOR TILE, SCORATED FOR UNFINISHED FLOORS). PROVIDE GASKETED PLASTIC PLUG IN CAST IRON BODY. USE TEFLON JOINT COMPOUND ON PLUG THREADS. CLEAN THE TOP OF EXPOSED FCO AFTER INSTALLATION.

6 FLOOR CLEANOUT DETAIL

NONE



- COMMENTS:
- LOCATE FLOOR DRAIN/SINK WHERE SHOWN ON DIMENSIONED FLOOR PLAN. IF SITUATION IS FLOOR SLAB ON GRADE, SET DRAIN BODY IN PLACE, PROVIDE BACKFILL, AND POUR AROUND IT. RECESS TOP OF FLOOR DRAINS 1/2" BELOW FLOOR DATUM AND SLOPE FLOOR TO IT. DO NOT RECESS FLOOR SINKS.
  - OTHER VENTING METHODS MAY BE USED, IF APPROVED BY LOCAL CODE AND/OR LOCAL AUTHORITIES.

7 FLOOR DRAIN AND SINK DETAIL

NONE

Order Plans

2 SANITARY ISOMETRIC DIAGRAM

NONE

Ron Renna, P.E.

3231 Drone Field Road  
Lakeland, FL 33811 (883) 946-1258

DUNKIN'

dunkin' brands  
STORE #358032  
US-11W  
BRISTOL, TN

REVISION		
No.	DATE	DESCRIPTION

DWG DATE: 2-1-2019  
DRAWN BY: STAFF  
PROJECT No.: 17182  
DWG TITLE:

PLUMBING RISERS AND SCHEDULES

SHEET No.

P-2