

Ron Renna, P.E.

3231 Drone Field Road
 Lakeland, FL 33811 (883) 946-1258

DUNKIN'

dunkin'
 brands.
 STORE #358032
 US-11W
 BRISTOL, TN

REVISION

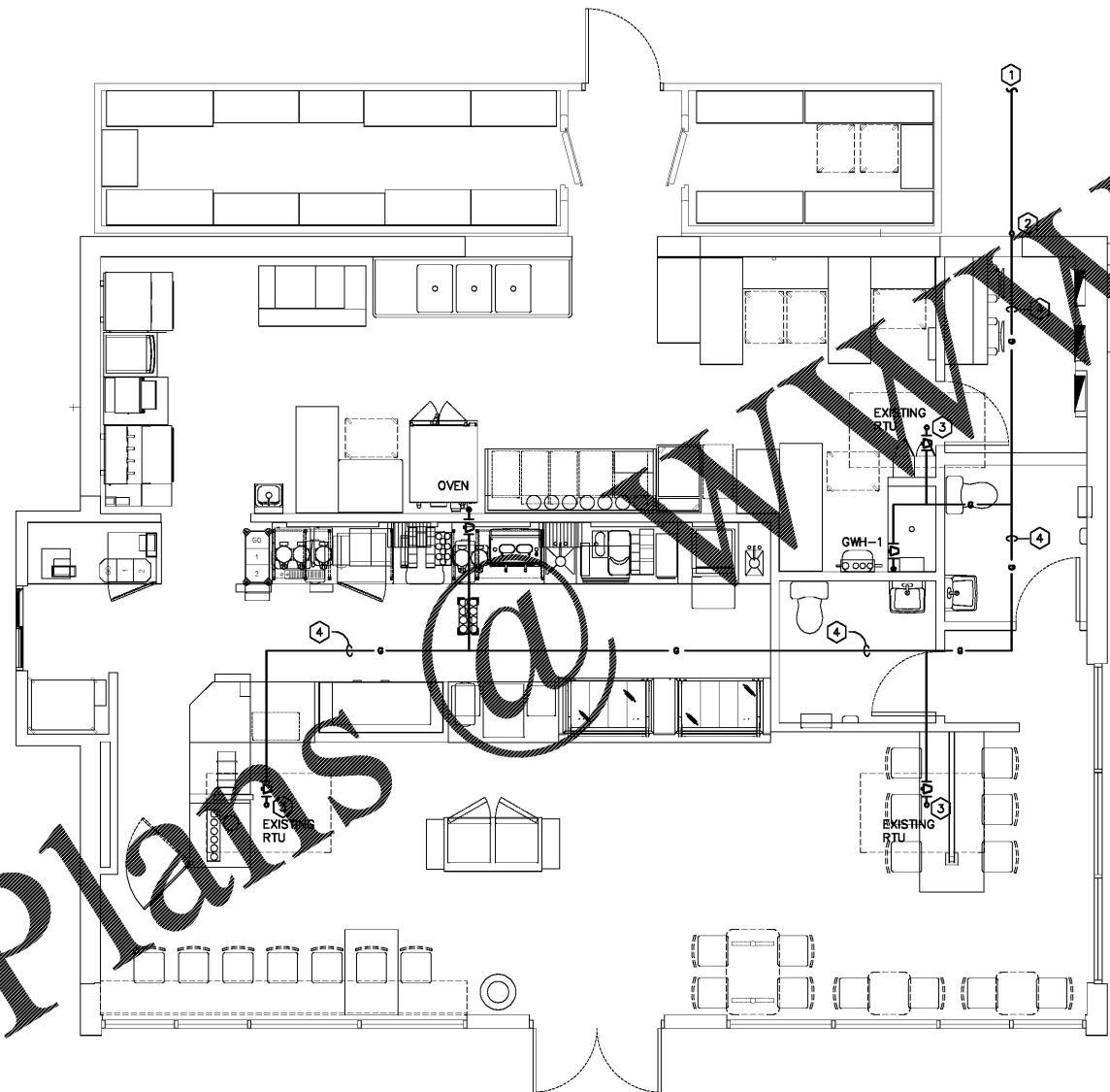
No.	DATE	DESCRIPTION

DWG DATE: 2-1-2019
 DRAWN BY: STAFF
 PROJECT No.: 17182

DWG TITLE:
GAS FLOOR PLAN

SHEET No.

P-1B



CONTRACTOR NOTES

IT IS THE RESPONSIBILITY OF THE CONTRACTOR TO NOTIFY THE ARCHITECT, LANDLORD OR TENANT OF ANY DISCREPANCIES ENCOUNTERED ON THE PLANS OR IN EXISTING SITE CONDITIONS PRIOR TO SUBMISSION OF BID. BIDDERS ARE TO VISIT THE SITE AND FAMILIARIZE THEMSELVES AS TO THE NATURE AND SCOPE OF THE WORK. THE BASE BID SHALL REFLECT MODIFICATIONS TO SYSTEMS AND DEVICES AS REQUIRED BY STATE, LOCAL AND FEDERAL CODES WHETHER INDICATED OR NOT ON CONTRACT DOCUMENTS. THE SUBMISSIONS OF A BID WILL BE EVIDENCE THAT SUCH AN EXAMINATION AND COMPLIANCE WITH GOVERNING CODES/REQUIREMENTS HAS BEEN MADE. LATER CLAIMS FOR LABOR, EQUIPMENT, OR MATERIALS REQUIRED, OR FOR DIFFICULTIES ENCOUNTERED WHICH COULD HAVE BEEN FORESEEN HAD AN EXAMINATION AND CODE/REQUIREMENTS REVIEW BEEN MADE, WILL NOT BE ALLOWED.

PLUMBING KEYED NOTES:

- ① EXTEND AND CONNECT NEW LP GAS PIPING TO EXISTING LP TANK. CONTRACTOR SHALL VERIFY EXACT LOCATION.
- ② ROUTE NEW LP GAS PIPING UP AND THRU WALL TO JOIST SPACE. CONTRACTOR SHALL VERIFY EXACT LOCATION.
- ③ ROUTE NEW LP GAS PIPING UP THRU ROOF CURB TO EXISTING RTU. CONTRACTOR SHALL VERIFY EXACT LOCATION.
- ④ NEW LP GAS PIPING IN JOIST SPACE. CONTRACTOR SHALL VERIFY EXACT LOCATION.

FLOOR PLAN - GAS
 SCALE: 1/4"=1'-0" 19014

Order Plans

WWW.LDILine.com