

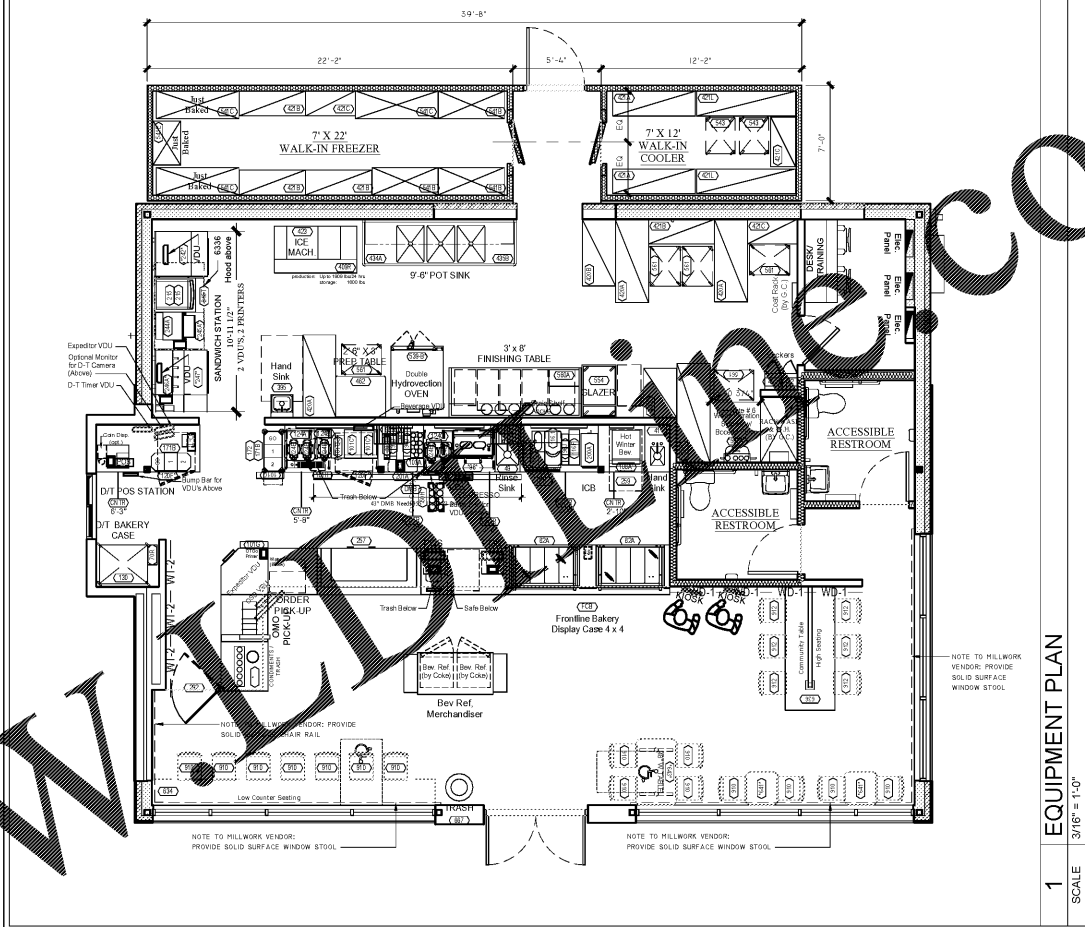
EQUIPMENT SCHEDULE

TAG	GENERAL EQUIPMENT INFORMATION				PLUMBING				ELECTRICAL					REMARKS	
	QTY.	DESCRIPTION	WATER		WASTE		REMARKS	LOAD			SUPPLIED W/ PLUG	RECEPT. SPEC. (NEMA)	HEIGHT A.F.F.		
			H.W.	C.W.	DIR.	IND.		VOLTS	PHASE	AMPS					
41	1	Hand Sink - 18"W x 36"L with 12" Splash Guards	1/2"	1/2"	1 1/2"	-	SINK BOWL 10" X 14" X 10" DEEP								Component hardware faucet 1&S #15B1100
45A	1	14" X 24" Wall Shelf - Mount 60" AFF to top of Shelf													
49	1	Dump Sink, 18"W x 34 1/2" D	1/2"	1/2"	-	1-1/2"									
50F LOT	1	Four Section Vertical Wire Rack - Cup Holder													
70R	1	Tissue Bag and Box Holder for D/T Display Rack													
82A	2	Bakery Rack 4 x 4							120	1	1	15	Y	5-15	
96J LOT	1	Espresso Syrup Rack													
96Q	1	Espresso Speed Rail													
96S	1	14" X 24" Wall Shelf - Mount 60" AFF to top of Shelf													
98	1	Barrista Espresso Machine	1/2"		1-1/2"				220	1	30	30	Y	15-30R	46"
101C	2	Dairy Dispenser							120	1	3	15		15-20	46" A.F.F. if located at Drive-thru coffee station
101G	2	Speed Rail for Lids - 20"													
101H	1	Sugar/Tea Bag/Stirrer Holder - 13"													
101L	1	Multi-Sweetener							120	1	.5		Y	5-15	46"
116	1	Magnablander Island Oasis	N/A	1/2"	N/A	2"	Indirect Waste to Open Site Drain with Air Gap per Local Code		120	1	5.3	20	Y	5-20	46"
101Q-3	1	Multi-Hopper Grinder and Storage System - Used with Axiom Brewer							120	1	11	15		5-15	46"
102A	1	Flavor Shot 9 Pump Counter Top Rack													
108A	1	Hot Winter Beverage Dispenser	N/A	1/2"	N/A	N/A	20-90 PSI. Supplied with 1/4" male flare fitting		120/208	1	21.7	30	Y	114-30	46"
116C Opt.	1	Island Oasis Cup/Lid Rack													
116F Opt.	1	Island Oasis Toppings Rack													
120F	2	Under Counter Refrigerator (Door Hinge per Plan)							115	1	7	15	Y	5-15	18"
121F	1	2 Drawer U/C Refrigerator							115	1	2.7	15	Y	5-15	18"
124A	1	Next Gen Double SH Brewer	N/A	1/2"	-	-	20-90 PSI. Supplied with 1/4" male flare fitting		120/240	1	25				
124B	5	1.5 Gallon SH Server													
124E	1	Next Gen Double SH Stand													
130	1	Bakery Case													
140A	1	Dome Lid Dispenser													
171B	2	Drive Thru Slating Mat													
200A	1	Iced Coffee Brewer #IC3-DBC W/ ICDD	N/A	1/2"	N/A	N/A	20-90 PSI. Supplied with 3/8" O.D. male flare fitting		120/208	1	19.5	30	Y	114-30	46"
201A	1	Ice Caddy													
202A	1	Iced Beverage Dispenser													
215	2	TurboChef Tomado Oven							208	1	30	30	Y	6-30	See FS Sheets for Height to outlet
215T	1	Stainless Steel Cart for Turbo Chef Bullet Ovens													
242	1	33" Cook Station									10		Y	5-15	See FS Sheets for Height to outlet
244	1	Dual Lane Smart Toaster							208	1	23.8	30	Y	6-30P	See FS Sheets for Height to outlet
244A	1	Dual Lane Toaster													
245A-1	1	Delfield 2P Toaster Station													
246A-1	1	12 Bay Holding Unit 33"W x 16"D x 16.5"H							120	1	15		Y	5-20P	See FS Sheets for Height to outlet
247-1	1	33" Assembly Station									10		Y	5-15P	See FS Sheets for Height to outlet
257	1	Tap System - Micromatic Back Refrigerator							115	1	11.1	20	Y	5-15	8" cord, 1/3 HP Dispenser
259	1	U/C Dishwasher, Hobart LXeR	3/4"		5/8"		15-65 PSIG		120/208	1	30.5	40	N		
395	1	Hand washing sink with side splashes. Can be used in front or back room.	1/2"	1/2"	1-1/2"		1-1/2"-2" Per local code								
402	2	Lockers													
409A-J	1	Ice Bins	N/A	N/A	N/A	3/4"	3/4" FPT Bin Drain								
420A-E LOT	1	Shelf, 24" x 24", 24" x 36", 24" x 48", 24" x 60", or 24" x 72"													
421A-L LOT	1	Shelf, 18" x 36", 18" x 48", 18" x 60", or 18" x 72"													
423	1	Prodigy Ice Maker, Cube Style, air cooled, up to 1,909 lbs/24 hrs.	3/4"						208/230	1	10.2		-	61"	Disconnect to NEMA 3R/30A/2P/NF
434A	1	112" x 34" 3 compartment sink used for Jell Baked Bowls 20" x 28" x 14", (2) 24" drain boards	3/4"	3/4"	2"	N/A	Direct/Indirect waste as determined by local codes								
435B	1	108" Sink Trax Shelving Workstation.													
462	1	Z-6 13-0 stainless steel prep table													
539B-2	1	Hydrovection Oven - gas, double	3/4"		(2) 1"		Appliance to be installed with backflow protection in accordance with federal, state, or local codes		115		10	20	Y	5-20	36"
541A-E LOT	1	Bakery pan rack													
543	LOT	Bakery pan rack													
554F	1	18x 26 x 3.5" deep translucent food box. Glazing smallwares.													
560A	1	36" x 96" Stainless steel finishing table with 10" deep overshelf													
561	LOT	Finished Product Rack													
590A	1	Base Filtration - Insource 20" PF Triple 7FC-S (75,000 Gallons, 7.50 GPM)	3/4" NPT	3/4" NPT											

- INSTALLATION NOTES:**
- EQUIPMENT SUPPLIER TO PLACE ALL NEW EQUIPMENT
 - GENERAL CONTRACTOR TO PLACE ALL EXISTING EQUIPMENT
 - GENERAL CONTRACTOR TO MAKE ALL MECHANICAL, PLUMBING, AND ELECTRICAL CONNECTIONS FOR ALL EQUIPMENT
 - THE ASTERISKS "*" IN THE "ITEM NO." INDICATES THAT THERE ARE MULTIPLE CHOICES AVAILABLE FOR THE RESPECTIVE PIECE OF EQUIPMENT OR MILLWORK.
 - IT IS UP TO THE FRANCHISEE AND/OR FIELD TEAM TO MAKE THE APPROPRIATE SELECTION FOR THE LOCATION

NOTE:

REFER TO DUNKIN' BRANDS MULTIBRAND EQUIPMENT SPECIFICATIONS ON DUNKIN' BRANDS WEB SITE, <http://extranet.dunkinbrands.com>, FOR COMPLETE EQUIPMENT AND UTILITY INFORMATION. DUNKIN' BRANDS WEB SITE ALWAYS TAKES PRECEDENCE OVER DRAWINGS IN INSTANCE OF CONFLICT.



1 EQUIPMENT PLAN
SCALE 3/8" = 1'-0"

ARCHITECT OF RECORD
JAMES D. SMITH, AIA
522 BAY LN.
CENTERTVILLE, MA 02632

I CERTIFY THAT THESE DOCUMENTS WERE PREPARED OR APPROVED BY ME, AND I AM A FULLY LICENSED ARCHITECT UNDER THE LAWS OF THE STATE OF TENNESSEE, LICENSE NO. 19897, EXPIRATION DATE 03/31/20.

dunkin' brands.
STORE #358032
US-11W
BRISTOL, TN

REVISION		
No.	DATE	DESCRIPTION

DWG DATE: 2-1-2019
DRAWN BY: STAFF
PROJECT No.: 17182
DWG TITLE: EQUIPMENT PLAN & SCHEDULE

SHEET No.
K-1

Order Plans @ www.dunkinbrands.com