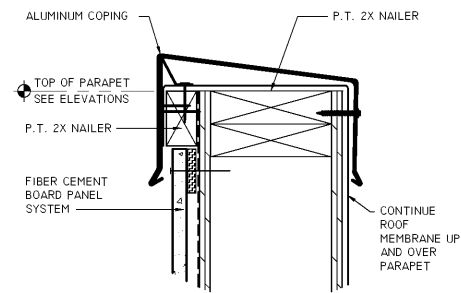
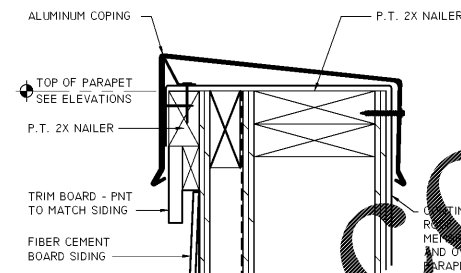


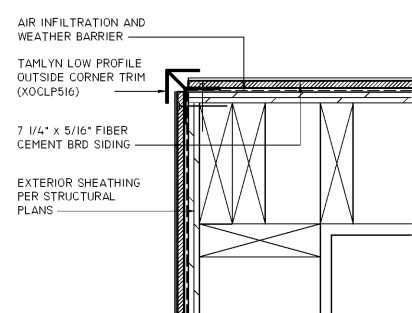
A10 COPING DETAIL @ SWITCH TOWER
 SCALE: 3" = 1'-0"



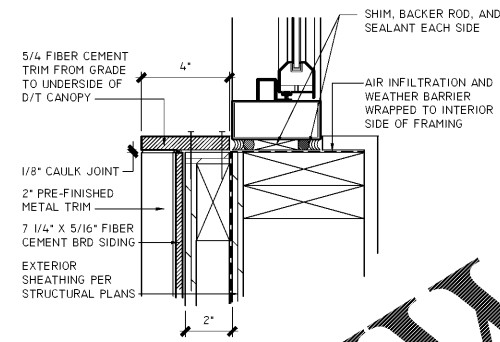
G10 TYPICAL COPING DETAIL @ FIBER CEMENT BRD PANEL
 SCALE: 3" = 1'-0"



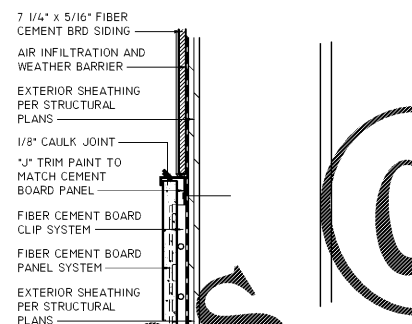
K10 TYPICAL COPING DETAIL @ FIBER CEMENT BRD SIDING
 SCALE: 3" = 1'-0"



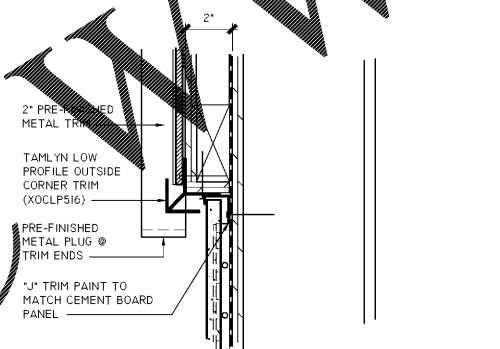
A7 TYPICAL OUTSIDE CORNER @ CEMENT BRD SIDING
 SCALE: 3" = 1'-0"



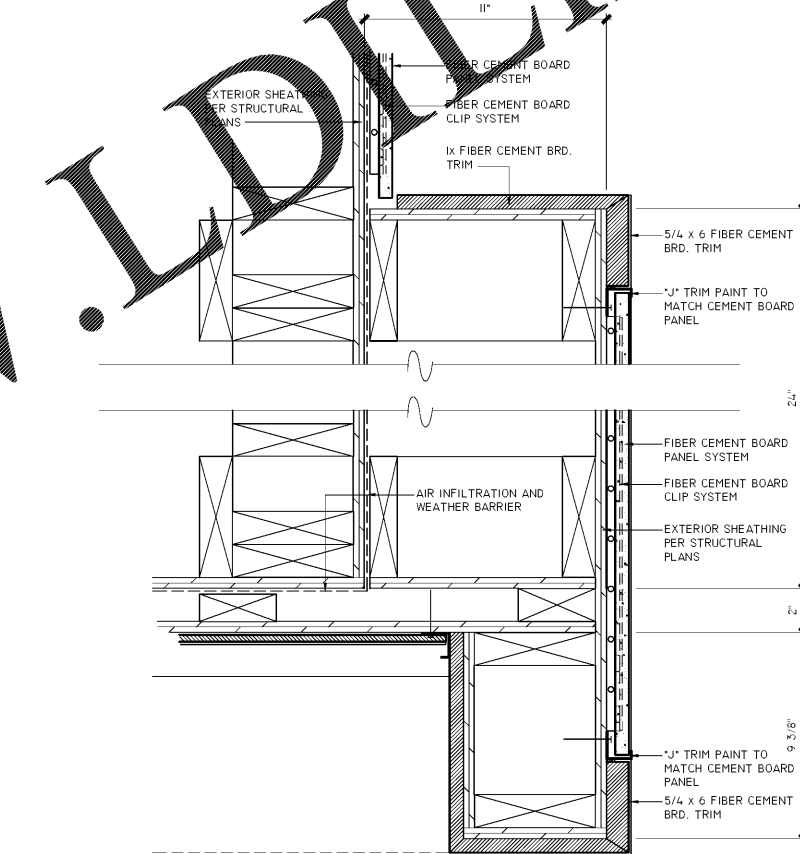
D7 D/T WINDOW JAMB DETAIL
 SCALE: 3" = 1'-0"



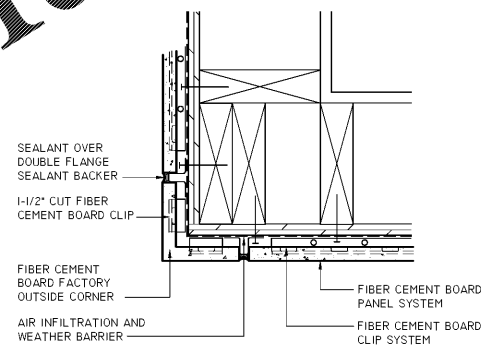
A4 TYPICAL PANEL TO SIDING TRANSITION DETAIL
 SCALE: 3" = 1'-0"



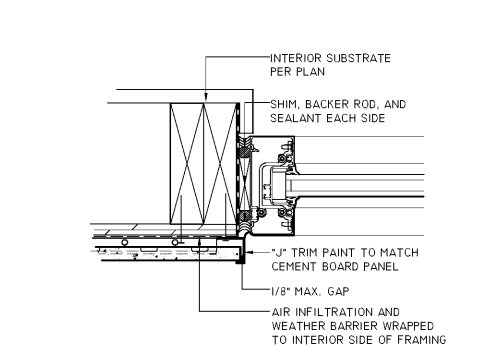
D4 D/T TOWER TRANSITION DETAIL
 SCALE: 3" = 1'-0"



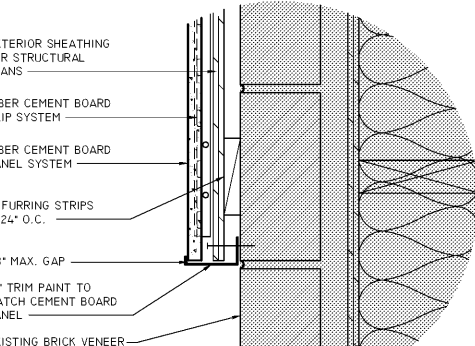
G4 ENTRY SWITCH TOWER TRANSITION DETAIL
 SCALE: 3" = 1'-0"



A1 TYPICAL OUTSIDE CORNER @ CEMENT BRD PANEL SYSTEM
 SCALE: 3" = 1'-0"



D1 STOREFRONT JAMB DETAIL
 SCALE: 3" = 1'-0"



G1 PANEL TO BRICK TRANSITION DETAIL
 SCALE: 3" = 1'-0"

I CERTIFY THAT THESE DOCUMENTS WERE PREPARED OR APPROVED BY ME, AND I AM A FULLY LICENSED ARCHITECT UNDER THE LAWS OF THE STATE OF TENNESSEE, LICENSE NO. 10097, EXPIRATION DATE 01.31.20

DUNKIN'

dunkin' brands.
 STORE #358032
 US-11W
 BRISTOL, TN

REVISION		
No.	DATE	DESCRIPTION

DWG DATE: 2-1-2019
 DRAWN BY: STAFF
 PROJECT No.: 17182
 DWG TITLE:

DETAILS

SHEET No.

A-9

Order Plans