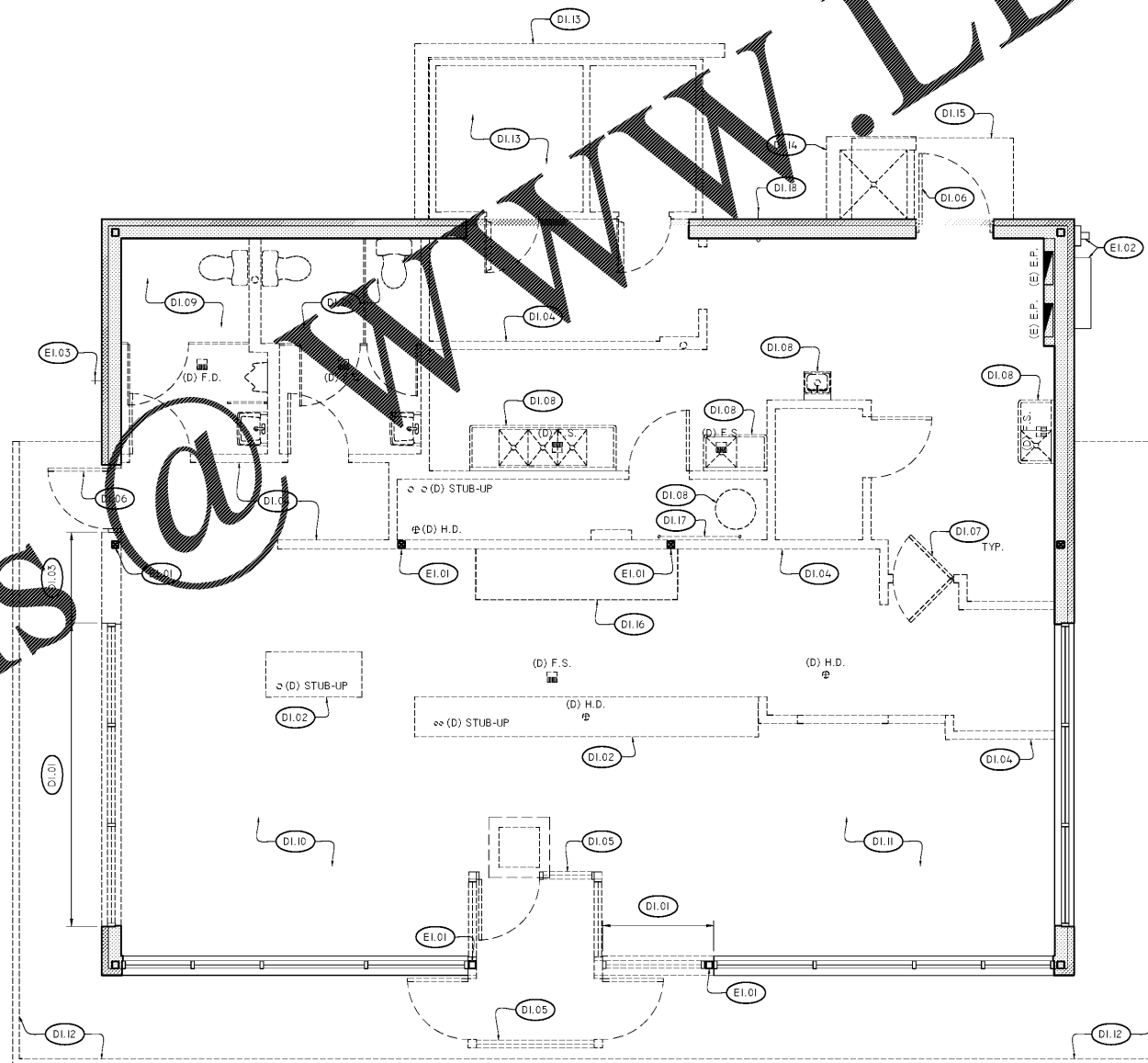


GENERAL DEMOLITION NOTES:

- DEMOLITION PLANS ARE GENERAL IN NATURE AND ARE NOT INTENDED TO BE ALL ENCOMPASSING OR EXHAUSTIVE IN DEPICTING EACH INDIVIDUAL ITEM TO BE REMOVED OR DEMOLISHED. THE CONTRACTOR SHALL BE RESPONSIBLE FOR FAMILIARIZING HIMSELF WITH THE PROJECT REQUIREMENTS PRIOR TO BIDDING. ITEMS INTERFERING WITH OR OF NO USE / VALUE TO THE COMPLETED PROJECT SHALL BE REMOVED OR DEMOLISHED WHETHER SPECIFICALLY INDICATED IN THE CONTRACT DOCUMENTS OR NOT.
- THE CONTRACTOR SHALL COORDINATE WITH THE TENANT / OWNER, THE ITEMS TO BE SALVAGED AND ITEMS TO BE DISPOSED OF. SALVAGED ITEMS SHALL BE HANDLED IN A WAY THAT WILL CAUSE NO FURTHER DAMAGE TO EACH PARTICULAR ITEM.
- DEMOLISH & REMOVE EXISTING INTERIOR PARTITIONS AS INDICATED ON PLAN.
- THE CONTRACTOR SHALL DEMOLISH AND REMOVE CONSTRUCTION AGAINST A RATED ASSEMBLY IN SUCH A WAY AS TO NOT DAMAGE, ALTER, OR COMPROMISE THE EXISTING RATING IN ANY WAY.
- DEMOLISH & REMOVE ALL INTERIOR DOORS & FRAME, CABINETS, / COUNTERS, AND ASSOCIATED FINISHING ELEMENTS IN THE ENTIRETY AS INDICATED ON PLANS.
- DEMOLISH & REMOVE ALL FLOOR FINISHES THROUGHOUT AREA OF WORK U.N.O. FLOOR PREPARATION INCLUDING BUT NOT LIMITED TO, ABANDONED CONDUITS, WIRE, & PIPE SHALL BE REMOVED & CAPPED BELOW FLOOR SLAB AS REQUIRED TO PROVIDE A SMOOTH, LEVEL FLOOR SLAB READY TO RECEIVE NEW FINISHES.
- DEMOLISH & REMOVE ALL EXISTING CEILING SYSTEMS IN THEIR ENTIRETY, INCLUDING BUT NOT LIMITED TO, LAY-IN CEILINGS, GWB HARD CEILINGS, DROPPED TRAYS, JOINTS, LIGHTS AND ALL ASSOCIATED FRAMING & HANGERS THROUGHOUT AREA OF WORK U.N.O. ALL ASSOCIATED WIRE TIES, HANGER SYSTEMS, PIPES, CONDUITS, ETC. TO BE REMOVED TO PROVIDE A CLEAN EXISTING EXPOSED UNDERSIDE OF STRUCTURE.
- DEMOLISH & REMOVE ALL EXISTING ABANDONED MECHANICAL EQUIPMENT AND DUCTWORK NOT TO BE REUSED.
- DEMOLISH & REMOVE ALL EXISTING ELECTRICAL DEVICES IN THEIR ENTIRETY THROUGHOUT THE AREA OF WORK U.N.O. ALL ASSOCIATED INTERIOR ELECTRICAL WIRES, FEEDS, & CONDUITS TO BE REMOVED BACK TO THEIR SOURCE.
- ALL PLUMBING FIXTURES NOTED TO BE DEMOLISHED & REMOVED SHALL HAVE ASSOCIATED PLUMBING REMOVED TO BELOW SLAB OR BEHIND FACE OF WALL. CAP PIPE & PATCH/ REPAIR SLAB & WALL.
- THE CONTRACTOR SHALL COORDINATE WITH PLUMBING AND ELECTRIC PLANS AND EXISTING CONDITIONS IN / BELOW SLAB FOR ALL SLAB CORNING AND SLAB SAW CUTS / TRENCHING REQUIRED TO PERFORM AND COMPLETE WORK. THE CONTRACTOR SHALL TAKE ALL PRECAUTIONS NECESSARY TO ENSURE EXISTING BELOW SLAB UTILITIES ARE NOT DAMAGED DURING DEMOLITION & CONSTRUCTION. THE CONTRACTOR SHALL SCAN OR X-RAY AREAS OF SLAB CORING, CUTTING, AND TRENCHING.
- THE CONTRACTOR SHALL BE RESPONSIBLE FOR DETERMINING THE EXTENTS OF TRENCHING REQUIRED & LOCATION OF TIE-INS. COORDINATE W/ PLUMBING PLANS.

DEMOLITION KEY NOTES: 0.0

- DI.01 DEMOLISH AND REMOVE PORTION OF EXISTING STOREFRONT AND PARTIAL HEIGHT EXTERIOR WALL AS SHOWN.
- DI.02 DEMOLISH AND REMOVE EXISTING MILLWORK IN ITS ENTIRETY.
- DI.03 DEMOLISH AND REMOVE PORTION OF EXISTING EXTERIOR WALL AS SHOWN.
- DI.04 DEMOLISH AND REMOVE EXISTING INTERIOR PARTITION AS SHOWN, INCLUDING ALL ASSOCIATED DOORS AND FRAMES.
- DI.05 DEMOLISH AND REMOVE EXISTING STORE FRONT VESTIBULE IN ITS ENTIRETY.
- DI.06 DEMOLISH AND REMOVE EXISTING EXTERIOR DOOR AND FRAME.
- DI.07 DEMOLISH AND REMOVE EXISTING INTERIOR DOOR AND FRAME.
- DI.08 DEMOLISH AND REMOVE EXISTING PLUMBING FIXTURE - SEE GENERAL NOTE 10.
- DI.09 DEMOLISH AND REMOVE EXISTING RESTROOM EQUIPMENT, PARTITIONS AND PLUMBING FIXTURES IN THEIR ENTIRETY. - SEE GENERAL NOTE 10.
- DI.10 DEMOLISH AND REMOVE EXISTING FLOOR FINISH THROUGHOUT AREA OF WORK - PREPARE SLAB TO RECEIVE NEW FLOOR FINISH. SEE GENERAL NOTE 6.
- DI.11 DEMOLISH AND REMOVE EXISTING CEILING SYSTEM THROUGHOUT AREA OF WORK. SEE GENERAL NOTE 7.
- DI.12 DEMOLISH AND REMOVE PORTION OF EXISTING MANSARD ROOF OVERHANG - COORDINATE WITH NEW CONSTRUCTION PLANS.
- DI.13 DEMOLISH AND REMOVE EXISTING EXTERIOR WALK-IN BOX AND ASSOCIATED MASONRY ENCLOSURE IN THEIR ENTIRETY AS SHOWN.
- DI.14 DEMOLISH AND REMOVE EXISTING EXTERIOR RACK WASH AND ASSOCIATED PARTIAL HEIGHT MASONRY WALL IN ITS ENTIRETY.
- DI.15 DEMOLISH AND REMOVE EXISTING OVERHEAD CANOPY IN ITS ENTIRETY.
- DI.16 DEMOLISH AND REMOVE EXISTING HOOD OVERHEAD IN ITS ENTIRETY.
- DI.17 DEMOLISH AND REMOVE EXISTING INCOMING WATER LINE AND BACKFLOW PREVENTION - RELOCATE TO NEW LOCATION - SEE PLUMBING PLANS.
- DI.18 DEMOLISH AND REMOVE EXISTING PROPANE GAS CONDUIT - RELOCATE/RE-ROUTE CONDUIT FROM IN-GROUND TANK. SEE PLUMBING PLANS.
- EI.01 EXISTING STRUCTURAL COLUMN TO REMAIN - PROTECT DURING CONSTRUCTION.
- EI.02 EXISTING ELECTRICAL EQUIPMENT TO REMAIN.
- EI.03 EXISTING HOSE BIB TO REMAIN.
- (D) DEMOLISH
- (E) EXISTING TO REMAIN



F1 DEMOLITION PLAN

SCALE: 1/4" = 1'-0"

I CERTIFY THAT THESE DOCUMENTS WERE PREPARED OR APPROVED BY ME, AND I AM A FULLY LICENSED ARCHITECT UNDER THE LAWS OF THE STATE OF TENNESSEE, LICENSE NO. 10097, EXPIRATION DATE 03.31.20

DUNKIN'

dunkin'
 brands.
 STORE #358032
 US-11W
 BRISTOL, TN

REVISION		
No.	DATE	DESCRIPTION

DWG DATE: 2-1-2019
 DRAWN BY: STAFF
 PROJECT No.: 17182
 DWG TITLE:

DEMOLITION PLAN

SHEET No.
D-1

Order Plans @