

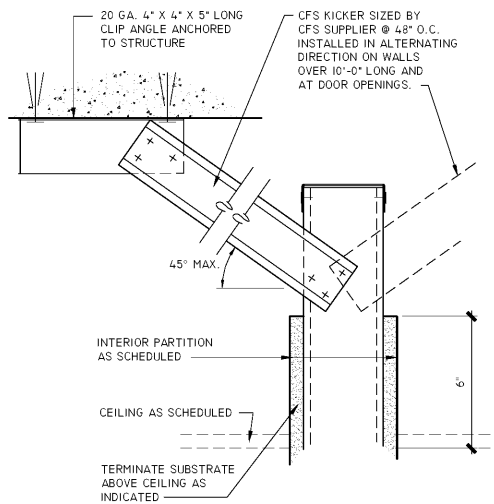
ANCHOR TRACK TO STRUCTURE PROVIDE 24 GA. 12" X 6" PLATE @ 24" O.C. IF PARTITION FALLS BETWEEN FLUTES

1/2" MIN. CLEAR TOP OF STUD TO TRACK

SLOTTED TOP TRACK ATTACHED TO STUDS INSTALL SCREWS AT CENTERED IN SLOT W/ STAND OFF WASHERS

INTERIOR PARTITION AS SCHEDULED

TYPICAL STUD WALL DETAIL - TERMINATION TO DECK (TD)



TYPICAL STUD WALL DETAIL - TERMINATION ABOVE CEILING (AC)

ANCHOR TRACK TO CEILING GRID W/ SCREWS. UTILIZE PARTITION CLIPS COMPATIBLE W/ GRID SYSTEM WHERE GRID IS NOT TO BE DAMAGED

CEILING AS SCHEDULED

PROVIDE EDGE BEAD AT TOP OF SUBSTRATE

INTERIOR PARTITION AS SCHEDULED

TYPICAL STUD WALL DETAIL - TERMINATION ABOVE CEILING (TC)

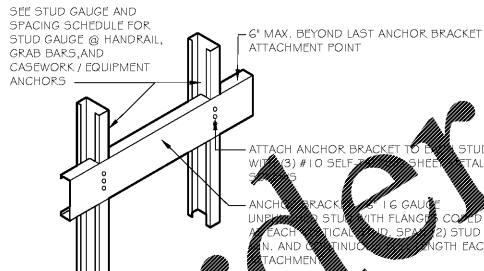
ANCHOR TRACK TO CEILING GRID W/ SCREWS. UTILIZE PARTITION CLIPS COMPATIBLE W/ GRID SYSTEM WHERE GRID IS NOT TO BE DAMAGED

CEILING AS SCHEDULED

PROVIDE EDGE BEAD AT TOP OF SUBSTRATE

INTERIOR PARTITION AS SCHEDULED

TYPICAL STUD WALL DETAIL - TERMINATION AT BASE



NOTES:
1. PARTITION HEIGHT, STUD SPACING, LENGTH, HEIGHT, QUANTITY AND POSITION OF BLOCKING W/ SPECIFIED EQUIPMENT AND FINISHES.
2. ALL STUD FLANGES CONTAINING BLOCKING.

TYPICAL BLOCKING DETAIL

GENERAL FIRE BARRIER, FIRE PARTITION / SMOKE BARRIER, SMOKE PARTITION NOTES.

1. GENERAL
ALL FIRE RATED AND SMOKE PROOF ASSEMBLIES SHALL BE CONSTRUCTED FULL HEIGHT FROM FLOOR SLAB TO UNDERSIDE OF STRUCTURE PER TYPICAL DETAILS THIS SHEET.

ALL FIRE RATED AND SMOKE PROOF ASSEMBLIES SHALL BE SEALED AT PERIMETER OF ASSEMBLY TO RESIST THE PASSAGE OF FLAME AND SMOKE PER TYPICAL DETAILS AND PERIMETER SEALANT NOTES THIS SHEET.

ALL RATED AND SMOKE PROOF ASSEMBLIES SHALL BE IDENTIFIED WITH LABELS LOCATED IN ACCORDANCE WITH THE LOCAL CODE. SEE THE CODE REVIEW AND LIFE SAFETY SHEET FOR ADDITIONAL LABELING REQUIREMENTS.

2. RATED SUBSTRATES:
THE FOLLOWING SUBSTRATES SHALL BE USED AS INDICATED BELOW FOR ALL INTERIOR RATED BARRIERS AND PARTITIONS UNLESS NOTED OTHERWISE ELSEWHERE IN THE CONTRACT DOCUMENTS.

ALL SUBSTRATES SHALL BE FINISHED IN ACCORDANCE W/GA 216-961 "RECOMMENDED LEVELS OF GYPSUM WALLBOARD FINISH". SEE GENERAL GYPSUM BOARD FINISH NOTES THIS SHEET.

GWB AS MANUFACTURED BY USG "SHEETROCK" BRAND "FIRECODE" CORE GYPSUM PANELS OR EQUAL 5/8" THICK UNLESS NOTED OTHERWISE FOR ALL ROOMS & AREAS SCHEDULED TO RECEIVE PAINT FINISH.

WATER RESISTANT GWB AS MANUFACTURED BY USG "SHEETROCK" BRAND "MOLD TOUGH FIRECODE" CORE GYPSUM PANELS OR EQUAL 5/8" THICK UNLESS NOTED OTHERWISE FOR ALL WET AREAS NOT SCHEDULED TO RECEIVE WALL TILE FINISH INCLUDING:
-RESTROOMS
-WITHIN THE VICINITY OF DRINKING FOUNTAINS

ABUSE RESISTANT GWB AS MANUFACTURED BY USG "FIBERROCK" VHI (VERY HIGH IMPACT) BRAND OR EQUAL 5/8" THICK UNLESS NOTED OTHERWISE FOR ALL ROOMS SCHEDULED TO RECEIVE IT. SEE FLOOR PLAN FOR AREAS

TILE BACKER BOARD AS MANUFACTURED BY USG "FIBERROCK" BRAND AQUA-TOUGH TILE BACKERBOARD OR EQUAL 5/8" THICK UNLESS NOTED OTHERWISE ALL AREAS SCHEDULED TO RECEIVE WALL TILE FINISH. COORDINATE W/ FINISH PLANS & INTERIOR ELEVATIONS FOR CEMENT BACKER BOARD LOCATIONS.

3. FIRE BATTS AND BLANKETS:
THE FOLLOWING INSULATION SHALL BE USED AS INDICATED BELOW FOR ALL INTERIOR RATED BARRIERS AND PARTITIONS SCHEDULED TO RECEIVE IT UNLESS NOTED OTHERWISE ELSEWHERE IN THE CONTRACT DOCUMENTS.

FURNISH AND INSTALL MINERAL WOOL FIRE SAFING AS INDICATED WITHIN THE CONTRACT DOCUMENT.

MINERAL WOOL FIRE SAFING SHALL BE 4 PCF MIN. PACKED TO 25% COMPRESSION, AS MANUFACTURED BY INDUSTRIAL INSULATION GROUP, LLC. ALL MINERAL WOOL SHALL BE INSTALLED PER THE MANUFACTURER'S WRITTEN SPECIFICATIONS.

4. FIRE CAULK AND SEALS:
ALL FIRE SEALANTS SHALL BE ACOUSTICAL SEALANT AS MANUFACTURED BY USG "SHEETROCK BRAND ACOUSTICAL SEALANT" UNLESS NOTED OTHERWISE WITHIN THE CONTRACT DOCUMENTS.

5. FIRE BLOCKING:
ALL FIREBLOCKING SHALL BE AS DETAIL WITHIN THE CONTRACT DOCUMENTS.

GENERAL GYPSUM BOARD FINISH NOTES.

ALL GYPSUM BOARD SHALL BE FINISHED AS INDICATED BELOW & IN ACCORDANCE WITH THE "LEVELS OF GYPSUM BOARD FINISH" TABLE & ASTM C840 LATEST EDITION "STANDARD SPECIFICATION FOR APPLICATION AND FINISH OF GYPSUM BOARD" UNLESS OTHERWISE NOTED IN THE CONTRACT DOCUMENTS.

TEMPORARY CONSTRUCTION & AREAS WHERE WALL FINISH HAS NOT BEEN ESTABLISHED SHALL BE FINISHED TO "LEVEL 0"

PLENUM AREAS ABOVE HULLS, ATTIC AREAS, BUILDING SERVICE CORRIDORS, COMPALED AREAS, & AREAS NOT NORMALLY OPEN TO PUBLIC SHALL BE FINISHED TO "LEVEL 1"

AREAS WHERE WATER RESISTANT GYPSUM BACKING BOARD (ASTM C630) IS USED FOR SUBSTRATE FOR TILE, GARAGES & STORAGE AREAS SHALL BE FINISHED TO "LEVEL 1"

ALL AREAS TO RECEIVE HEAVY OR MEDIUM TEXTURED FINISHES BEFORE FINAL PAINTING OR WHERE HEAVY GRADE WALL COVERINGS ARE SCHEDULED SHALL BE FINISHED TO "LEVEL 3"

ALL AREAS TO RECEIVE LIGHT TEXTURED FINISH OR FLAT PAINTS & ALL AREAS NOT LISTED ABOVE & VIEWED BY THE PUBLIC SHALL BE FINISHED TO "LEVEL 4"

"LEVEL 5" FINISH SHALL BE USED WHERE SPECIFICALLY NOTED TO RECEIVE "LEVEL 5" FINISH IN THE CONTRACT DOCUMENTS

LEVEL	JOINTS & INTERIOR ANGLES	ACCESSORIES & FASTENERS	SURFACE
0	NO TAPING	N/A	N/A
1	TAPE SET IN JOINT COMPOUND	N/A	TOOL MARKS AND RIDGES ACCEPTABLE. SURFACE FREE OF EXCESS JOINT COMPOUND.
2	TAPE EMBEDDED IN JOINT COMPOUND AND WIPED WITH A JOINT KNIFE, LEAVING A THIN COAT OF COMPOUND OVER TAPE.	SHALL BE COVERED BY ONE SEPARATE COAT OF JOINT COMPOUND	TOOL MARKS AND RIDGES ACCEPTABLE. SURFACE FREE OF EXCESS JOINT COMPOUND.
3	TAPED AS IN LEVEL #2 THEN COVERED WITH ONE SEPARATE COAT OF JOINT COMPOUND.	SHALL BE COVERED BY TWO SEPARATE COATS OF JOINT COMPOUND	JOINT COMPOUND SHALL BE SMOOTH AND FREE OF TOOL MARKS AND RIDGES.
4	TAPED AS IN LEVEL #2 THEN COVERED WITH TWO SEPARATE COATS OF JOINT COMPOUND.	SHALL BE COVERED BY THREE SEPARATE COATS OF JOINT COMPOUND	JOINT COMPOUND SHALL BE SMOOTH AND FREE OF TOOL MARKS AND RIDGES.
5	TAPED AS IN LEVEL #2 THEN COVERED WITH TWO SEPARATE COATS OF JOINT COMPOUND.	SHALL BE COVERED BY THREE SEPARATE COATS OF JOINT COMPOUND	A THIN SKIM COAT OF JOINT COMPOUND SHALL BE APPLIED TO THE FINISH SURFACE. THE SURFACE SHALL BE SMOOTH AND FREE OF TOOL MARKS AND RIDGES.

GENERAL WALL TYPE SCHEDULE NOTES.

1. INTERIOR SUBSTRATES:
THE FOLLOWING SUBSTRATES SHALL BE USED AS INDICATED BELOW FOR ALL INTERIOR PARTITIONS UNLESS NOTED OTHERWISE ELSEWHERE IN THE CONTRACT DOCUMENTS.

GWB AS MANUFACTURED BY USG "SHEETROCK" BRAND OR EQUAL 5/8" THICK UNLESS NOTED OTHERWISE FOR ALL ROOMS & AREAS SCHEDULED TO RECEIVE PAINT FINISH.

ALL SUBSTRATES SHALL BE FINISHED IN ACCORDANCE W/GA 216-961 "RECOMMENDED LEVELS OF GYPSUM WALLBOARD FINISH". SEE GENERAL GYPSUM BOARD FINISH NOTES THIS SHEET.

WATER RESISTANT GWB AS MANUFACTURED BY USG "SHEETROCK" BRAND OR EQUAL 1/2" THICK UNLESS NOTED OTHERWISE FOR ALL WET AREAS NOT SCHEDULED TO RECEIVE WALL TILE FINISH INCLUDING:
-RESTROOMS
-WITHIN THE VICINITY OF DRINKING FOUNTAINS

ABUSE RESISTANT GWB AS MANUFACTURED BY USG "SHEETROCK" BRAND OR EQUAL 5/8" THICK UNLESS NOTED OTHERWISE FOR ALL ROOMS SCHEDULED TO RECEIVE IT. SEE FLOOR PLAN FOR AREAS

PLYWOOD AT KITCHEN AREAS & AREAS SCHEDULED TO RECEIVE FRP FINISHES 5/8" NOM. THICK UNLESS NOTED OTHERWISE FROM 6" A.F.F. TO 6" ABV. CLG. SEE DRAWING INFORMATION / TITLE SHEETS FOR FIRE RETARDANT TREATED (FR1) WOOD REQUIREMENTS IF APPLICABLE.

CEMENT BACKER BOARD AS MANUFACTURED BY USG "DURROCK" BRAND OR EQUAL 5/8" THICK UNLESS NOTED OTHERWISE ALL AREAS SCHEDULED TO RECEIVE WALL TILE FINISH AND IN KITCHEN AREAS FROM FLOOR TO 6" A.F.F. COORDINATE W/ FINISH PLANS & INTERIOR ELEVATIONS FOR CEMENT BACKER BOARD LOCATIONS.

2. INSULATION:
THE FOLLOWING INSULATION SHALL BE USED AS INDICATED BELOW FOR ALL INTERIOR PARTITIONS AND FURRING WALLS SCHEDULED TO RECEIVE IT UNLESS NOTED OTHERWISE ELSEWHERE IN THE CONTRACT DOCUMENTS.

SEE GENERAL FIRE BARRIER, FIRE PARTITION / SMOKE BARRIER, SMOKE PARTITION NOTES THIS SHEET FOR FIRE BATT INFORMATION.

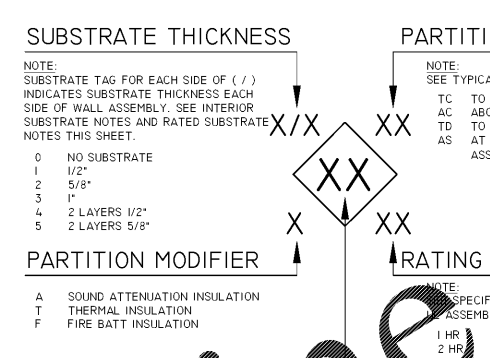
SOUND ATTENUATION BATT AS MANUFACTURED BY OWINGS CORNING "SOUND ATTENUATION BATTS FIBERGLASS" 3 1/2" THICK, UNFACED, OR EQUAL.

2" RIGID INSULATION FOR ALL FURRING WALLS ADJACENT TO EXTERIOR WALLS AS MANUFACTURED BY OWINGS CORNING "INSUL PINK-2" FOAMULAR EXTRUDED POLYSTYRENE OR EQUAL WHERE 2" Z-C CHANNEL FRAMING IS USED.

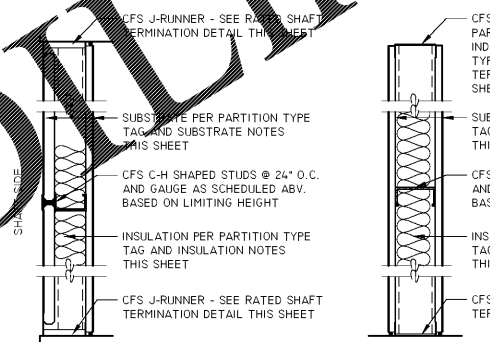
2 1/2" FIBERGLASS BOARD INSULATION FOR ALL FURRING WALLS ADJACENT TO EXTERIOR WALLS AS MANUFACTURED BY OWINGS CORNING "TYPE 703, UNFACED" OR EQUAL WHERE 2 1/2" X 3 5/8" CHANNEL FRAMING IS USED.

3. BLOCKING:
BLOCKING SHALL BE PROVIDED PER TYPICAL BLOCKING DETAIL. SEE INTERIOR PARTITION NOTES FOR FINISH LOCATIONS.

PARTITION TYPE TAG - MATRIX



FRAMING / PARTITION TYPE

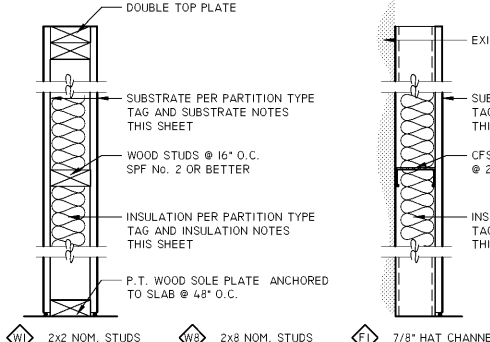


2 1/2" STUDS
4" STUDS
6" STUDS

1 5/8" STUDS
2 1/2" STUDS
3 5/8" STUDS

6" STUDS
8" STUDS

CFS C-H SHAPED STUD SHAFT
CFS C SHAPED STUD PARTITION



2x2 NOM. STUDS
2x4 NOM. STUDS
2x6 NOM. STUDS

2x8 NOM. STUDS

7/8" HAT CHANNEL
1 1/2" HAT CHANNEL
1" Z CHANNEL

1 1/2" Z CHANNEL
2" Z CHANNEL
3 5/8" C CHANNEL

WOOD STUD PARTITION
CFS FURRING STUD

CFS STUD GAUGE AND SPACING SCHEDULE (BASED ON LIMITING HEIGHT)									
CFS C SHAPED STUD					CFS C-H SHAPED STUD				
TAG	STUD SIZE	STUD GAUGE	STUD SPACING	LIMITING HEIGHT (L/24IN. @ 1 PCF)	TAG	STUD SIZE	STUD GAUGE	STUD SPACING	LIMITING HEIGHT (L/24IN. @ 1 PCF)
S1	1 5/8"	25 GA.	16" O.C.	8'-4"	H2	2 1/2"	25 GA.	24" O.C.	9'-3"
		20 GA.	24" O.C.	7'-11"			20 GA.	24" O.C.	10'-9"
		20 GA.	16" O.C.	9'-8"			25 GA.	24" O.C.	12'-5"
S2	2 1/2"	25 GA.	16" O.C.	11'-3"	H6	6"	20 GA.	24" O.C.	15'-3"
		25 GA.	24" O.C.	10'-7"			20 GA.	24" O.C.	21'-0"
		20 GA.	16" O.C.	12'-10"			20 GA.	24" O.C.	14'-7"
S3	3 5/8"	25 GA.	16" O.C.	14'-4"	H4	4"	25 GA.	24" O.C.	13'-5"
		20 GA.	24" O.C.	16'-5"			20 GA.	24" O.C.	14'-9"
		20 GA.	16" O.C.	14'-9"			25 GA.	24" O.C.	16'-9"
S5	6"	25 GA.	16" O.C.	19'-9"	H3	3"	25 GA.	24" O.C.	24'-6"
		20 GA.	24" O.C.	21'-7"			20 GA.	24" O.C.	21'-7"
		20 GA.	16" O.C.	21'-7"			20 GA.	24" O.C.	21'-7"

CFS FRAMING NOTES.
THE CG SHALL VERIFY ALL STUD GAUGES WITH THE CFS SUPPLIER BASED ON WALL HEIGHT AND ACTUAL CONDITIONS IN THE FIELD. WHERE THE CFS SUPPLIER DEEMS A STUD SIZE AND GAUGE INADEQUATE FOR A WALL ASSEMBLY OR HEIGHT, THE GAUGE SHALL BE INCREASED TO THAT REQUIRED.
PROVIDE (2) 20 GAUGE STUDS AT ALL DOOR JAMBS EACH SIDE.
PROVIDE 20 GAUGE STUDS @ 16" O.C. AT ALL WALLS SCHEDULED TO RECEIVE CEMENT BACKER BOARD.
PROVIDE 20 GAUGE STUDS @ HANDRAIL, GRAB BARS, AND CASEWORK / EQUIPMENT ANCHORS

ARCHITECT OF RECORD
JAMES D. SMITH, AIA
522 BAY LN.
CENTERTVILLE, MA 02632

I CERTIFY THAT THESE DOCUMENTS WERE PREPARED OR APPROVED BY ME, AND I AM A FULLY LICENSED ARCHITECT UNDER THE LAWS OF THE STATE OF TENNESSEE, LICENSE NO. 19092, EXPIRATION DATE 03.31.20

DUNKIN'

dunkin' brands.
STORE #358032
US-11W
BRISTOL, TN

REVISION		
No.	DATE	DESCRIPTION

DWG DATE: 2-1-2019
DRAWN BY: STAFF
PROJECT No.: 17182
DWG TITLE:

INTERIOR PARTITION SCHEDULE

SHEET No.
T-4