

### LIGHTING FIXTURE SCHEDULE

TYPE	MANUFACTURER	CATALOG #	DESCRIPTION	VOLTS	WATTS	MOUNTING	REMARKS	FURNISHED BY
GG	US LED	DS-402U-2-UNV-QB3-NC-1-L	LED WALL PACK	120	42.5	WALL	WALL PACK	OWNER
GGE	US LED	DS-402U-2-UNV-QB3-NC-1-L / ILB-CP12-A / RME1	LED WALL PACK / EMERGENCY BATTERY / EMERGENCY CAN	120	42.5	WALL	WALL PACK	OWNER
TC	EATON	HBL-ED-LD5-18SE-W-UNV-L850-ED2-U	LED HIGH BAY	120	151	SURFACE	MOUNT TO BOTTOM OF STRUCTURE	OWNER
TD	CROUSE-HINDS	MLL4/UNV1 TF / DP1050MTK	EXPLOSION PROOF FIXTURE / MOUNTING BRACKET	120	54.5	SURFACE	USE CEILING MOUNT BRACKET	OWNER
TDE	CROUSE-HINDS	MLL4/UNV1 S903 TF EM / DP1050MTK	EMERGENCY EXPLOSION PROOF FIXTURE / MOUNTING BRACKET	120	54.5	SURFACE	USE CEILING MOUNT BRACKET	OWNER

LT		EXISTING PANELBOARD		208Y/120V, 3PH, 4W									
SERVES: TIRE SHOP		225A M.L.O.		10,000 AIC									
LOCATION: LAWN STORAGE		SURFACE MOUNT		GROUND BAR									
FED FROM: PANEL MDP		ISOLATED GROUND BAR											
OVERCURRENT DEVICE: 225A													
CK	LOAD SERVED	WIRE	BRKR	PL	PHASE A	PHASE B	PHASE C	PL	BRKR	WIRE	LOAD SERVED	CK	
1	air compressor (10)		90	3	5.54	0.70		1	20		air dryer (10)	2	
3					5.54	1.00		1	20		tire spreader (10)	4	
5							5.54	1.15	1	20	EF-5 (14)	6	
7	tire balancer (10)		30	3	1.60	1.30		1	20		ltg - storage (10)	8	
9					1.60	0.54		1	20		ltg - exterior (10)	10	
11							1.60	0.80	1	20	rec - shop (10)	12	
13	portable welder (10)		50	2	2.77	0.90		1	20		rec - shop (10)	14	
15					2.77	0.78		1	20		blgd sign (10)	16	
17	ltg - work lights (10)		20	1			0.60	1.56	1	20	blgd sign (10)	18	
19	rec - shop (10)		20	1	0.90	0.78		1	20		door sign (10)	20	
21	motorized door - shop (10)		20	1		1.20	0.72		1	20	ig rec - computer station (10)	22	
23	motorized door - shop (10)		20	1			1.20	1.29	1	20	ltg - shop bay (10)	24	
25	motorized door - shop (10)		20	1	1.20	1.29		1	20		ltg - shop bay (10)	26	
27	motorized door - shop (10)		20	1		1.20	0.20		1	20	ef-03 (10)	28	
29	ewh-1 (10)		20	2			1.50	0.51	2	30	ltg - pk lot (10)	30	
31					1.50	0.52						32	
33	uh-1 (10)		35	2		2.50	1.39		2	50	portable welder (10)	34	
35							2.50	1.39				36	
37	uh-2 (10)		35	2	2.50	3.19			3	60	PANEL LT2 (N,13)	38	
39					2.50	3.49						40	
41	EF-4 (14)		20	1			1.15	3.65				42	
TOTAL CONNECTED				24.7		25.4				24.6		KVA	
TOTAL CONNECTED				205.6		211.9				204.6		AMPS	
TOTAL LOAD				74.7		KVA		207.3		AMPS			
PER NEC ARTICLE 220 FEEDER LOAD				81.5		KVA		226.2		AMPS			

RELOCATED CIRCUITS:  
 • FROM LT-36 TO LT-41  
 • FROM LT-40 TO LT-6

LT2		NEW PANELBOARD		208Y/120V, 3PH, 4W									
SERVES: TIRE SHOP		100A M.L.O.		10,000 AIC									
LOCATION: LAWN STORAGE		SURFACE MOUNT		GROUND BAR									
FED FROM: PANEL LT													
OVERCURRENT DEVICE: 60A													
CK	LOAD SERVED	WIRE	BRKR	PL	PHASE A	PHASE B	PHASE C	PL	BRKR	WIRE	LOAD SERVED	CK	
1	OIL PIT SUMP PUMP		12	20	1	0.96	0.00		1	20	SPARE (N)	2	
3	LTG - MECHANIC'S BAY		12	20	1		0.91	0.56		2	12	ADO-1 (N)	
5	REC - MECHANIC'S BAY (N)		12	20	1			1.08	0.56		120/208V/1PH	4	
7	REC - MECHANIC'S BAY (N)		12	20	1	0.90	0.56		2	20	12	ADO-2 (N)	
9	REC - MECHANIC'S BAY (N)		12	20	1		0.60	0.56			120/208V/1PH	10	
11	REC - MECHANIC'S BAY (N)		12	20	1			0.60	0.55	1	20	12	PTG - OFFICE (N)
13	EF-4 (N)		12	20	1	0.86	0.00		1	20	12	SPARE (N)	
15	EF-5 (N)		12	20	1		0.86	0.00	1	20	12	SPARE (N)	
17	EF-6 (N)		12	20	1			0.86	0.00	1	20	12	SPARE (N)
19	SPACE				0.00	0.00						20	SPACE
21	SPACE					0.00	0.00					22	SPACE
23	SPACE						0.00					24	SPACE
25	SPACE				0.00	0.00						26	SPACE
27	SPACE					0.00	0.00					28	SPACE
29	SPACE						0.00					30	SPACE
TOTAL CONNECTED				3.19		3.49				3.65		KVA	
TOTAL CONNECTED				26.6		29.1				30.4		AMPS	
TOTAL LOAD				10.3		KVA		26.7		AMPS			
PER NEC ARTICLE 220 FEEDER LOAD				10.9		KVA		34.8		AMPS			

EC SHALL MATCH TYPE AND AIC RATINGS OF EXISTING CIRCUIT BREAKERS.

EXISTING CIRCUITRY IS BASED ON ORIGINAL DRAWING PLANS, PANEL SCHEDULES AND FIELD SURVEY. EXISTING CIRCUITS TO REMAIN ARE NOTED IN THE PANELBOARD SCHEDULES. NEW CIRCUITS TO BE INSTALLED ARE BASED UPON PRESENT INFORMATION AND FIELD SURVEY.

ALL SWITCHBOARDS AND PANELBOARDS SHALL HAVE A COMMERCIALY PRODUCED PERMANENT LABEL APPLIED TO EACH PANELBOARD. THE LABEL SHALL BE APPLIED TO THE FRONT OF THE PANELBOARD AND SHALL BE IN ACCORDANCE WITH NEC 110.16 AND NFPA 70E. LABELS MAY BE COMPLETED BY EQUIPMENT MANUFACTURER, EQUIPMENT VENDOR/SUPPLIER, OR THE CONTRACTOR. THE CONTRACTOR SHALL VERIFY THAT ALL SWITCHBOARDS AND PANELBOARDS ARE PROPERLY LABELED IN THE FIELD.

- #### PANELBOARD NOTES ( )
- TERMINATE GROUND ON ISOLATED GROUND BUS.
  - INSTALL LOCKING DEVICE FURNISHED WITH PANELBOARD (LOCK-OFF FOR MAINTENANCE).
  - INSTALL LOCKING DEVICE FURNISHED WITH PANELBOARD (LOCK-ON FOR CRITICAL LOAD).
  - GFI BREAKER FOR PERSONNEL PROTECTION (50mA).
  - GFI BREAKER FOR EQUIPMENT PROTECTION (30mA).
  - CONDUCTOR SIZE HAS BEEN INCREASED FOR VOLTAGE DROP. SIZE EQUIPMENT TERMINAL CONDUCTOR PROPORTIONALLY PER NEC.
  - FACTORY WIRE TO LOAD.
  - THRU CONDUCTOR.
  - EXISTING CIRCUITS TO REMAIN.
  - PROVIDE HANDLE LOCK OFF DEVICE TO LOCK "SPARE" CIRCUIT BREAKER IN THE "OFF" POSITION. IF CIRCUIT BREAKER IS IDENTIFIED AS "EXISTING", FIELD VERIFY CIRCUIT BREAKER INDICATED IS NOT CONNECTED TO ANY LOAD AND UPDATE PANELBOARD CIRCUIT DIRECTORY IDENTIFYING CIRCUIT AS "SPARE".
  - TRACE EXISTING CIRCUIT, IDENTIFY LOAD AND PROVIDE COMPLETE TYPEWRITTEN PANELBOARD IDENTIFICATION SCHEDULE AND PLACE ON INTERIOR OF PANELBOARD DOOR. IF CIRCUIT IS A "SPARE" THEN REFER TO PANELBOARD NOTE (11).
  - REFER TO ONE-LINE DIAGRAM FOR WIRE SIZES.
  - RELOCATED CIRCUIT.
  - NEW

**HFA**  
ARCHITECTS & ENGINEERS

**BRISON FRENCH & ASSOCIATES, LTD.**  
1705 S. Brentwood Blvd, Suite 3  
Bentonville, Arkansas 72712  
937.273.7780  
888.520.9685  
www.hfa-ae.com

STIPULATION FOR REUSE  
 THIS DRAWING IS THE PROPERTY OF HFA ARCHITECTS & ENGINEERS, INC. AND IS NOT TO BE REPRODUCED OR TRANSMITTED IN ANY FORM OR BY ANY MEANS, ELECTRONIC OR MECHANICAL, INCLUDING PHOTOCOPYING, RECORDING, OR BY ANY INFORMATION STORAGE AND RETRIEVAL SYSTEM, WITHOUT THE WRITTEN PERMISSION OF HFA ARCHITECTS & ENGINEERS, INC.

13365 GLENBROOK AVE  
MEADOWVIEW, VA 24361

**Love's**  
Travel Stop & Country Stores

PROJECT NUMBER: 03-18-2013

JAIME A. CASTANEDA  
Lic. No. 52379  
PROFESSIONAL ENGINEER

OCT 24 2018

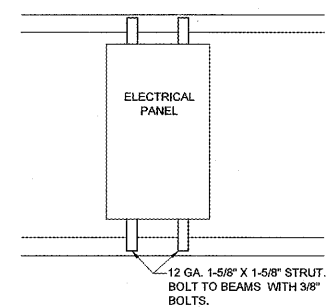
ISSUE	NO.	DATE	DESCRIPTION

STORE NO.	613
DOCUMENT DATE:	10/25/18
CHECKED BY:	NKC
DRAWN BY:	CAR
PROTO CYCLE:	

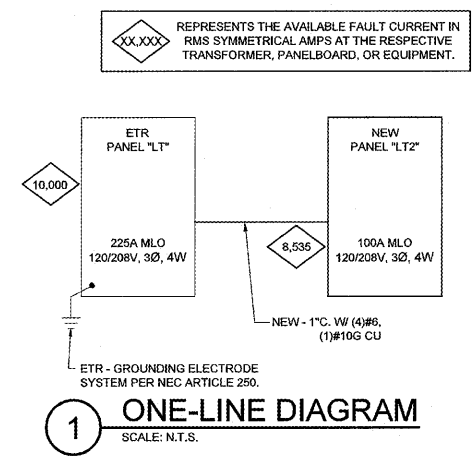
SCHEDULES & NOTES

SHEET: YE-2

Order Plans @ WWW.ONLINE



STANDARD ELECTRICAL PANEL MOUNTING DETAIL  
SCALE: N.T.S.



ONE-LINE DIAGRAM  
SCALE: N.T.S.

EACH SUBCONTRACTOR IS RESPONSIBLE FOR HAVING A THOROUGH KNOWLEDGE OF ALL DRAWINGS AND SPECIFICATIONS IN THEIR RELATED FIELD. THE FAILURE TO ACQUAINT HIMSELF WITH THIS KNOWLEDGE DOES NOT RELIEVE THE RESPONSIBILITY OF PERFORMING HIS WORK PROPERLY. NO ADDITIONAL COMPENSATION SHALL BE ALLOWED BECAUSE OF CONDITIONS THAT OCCUR DUE TO FAILURE TO FAMILIARIZE WORKERS WITH THIS KNOWLEDGE.