

**SHEET NOTES:**  
 1. DEVON EZ-GUIDE SAFETY COVER, PROVIDED BY OWNER & INSTALLED BY GC.  
 2. PAINT LUBE PIT WALLS & FLOOR WITH "SHERWIN WILLIAMS" ARMORSEAL 100HS-B67-2000 CLEAR BASE WITH GLOSS FINISH

**HFA**  
 ARCHITECTS  
 ENGINEERS  
 INTERIORS

**HARRISON FRENCH & ASSOCIATES, LTD.**  
 1705 S. Main Blvd., Suite 3  
 Bentonville, Arkansas 72712  
 479-213-7780  
 479-213-9685  
 www.hfa-ac.com

**STIPULATION FOR REUSE**  
 THESE DRAWINGS WERE PREPARED FOR THE PROJECT AND SITE SPECIFIC TO THE PROJECT. ANY REUSE OF THESE DRAWINGS FOR ANY OTHER PROJECT, WITHOUT THE WRITTEN PERMISSION OF HFA, IS STRICTLY PROHIBITED. THE USER OF THESE DRAWINGS SHALL BE RESPONSIBLE FOR OBTAINING ALL NECESSARY PERMITS AND APPROVALS FROM THE APPROPRIATE AGENCIES AND CONTRACTORS TO THE LAW.

13365 GLENBROOK AVE  
 MEADOWVIEW, VA 24361

**LIGHT MECHANICAL SERVICE ADDITION**

PROJECT NUMBER: 03-18-20613

**Love's**  
 Travel Stop &  
 Country Stores

COMMONWEALTH OF VIRGINIA  
 BOGUE L. EBBRECHT  
 Lic. No. 016472  
 ARCHITECT

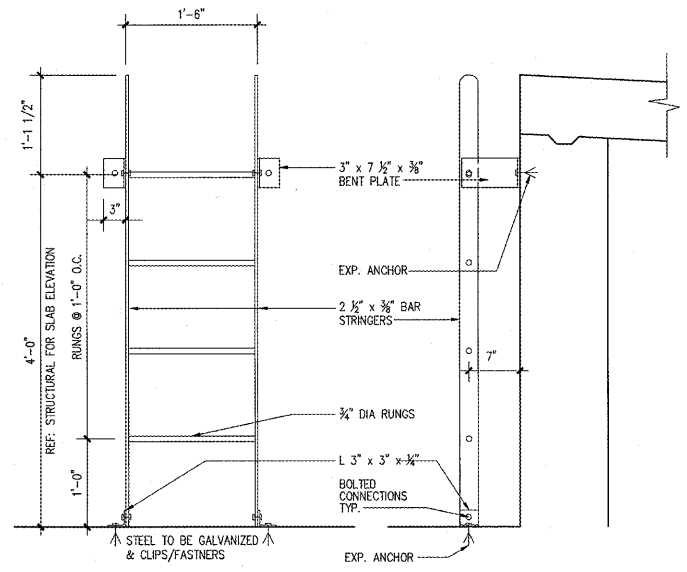
OCT 26 2018

**ISSUE BLOCK**

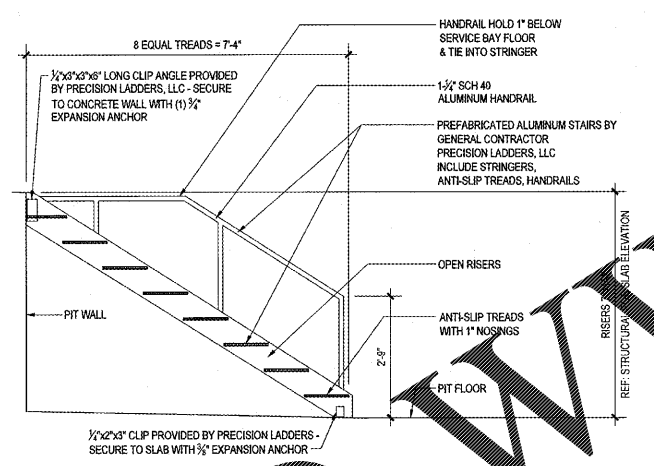

STORE NO.	613
DOCUMENT DATE:	10/25/18
CHECKED BY:	RAF
DRAWN BY:	RVM
PROTO CYCLE:	

**LUBE PIT SECTIONS**

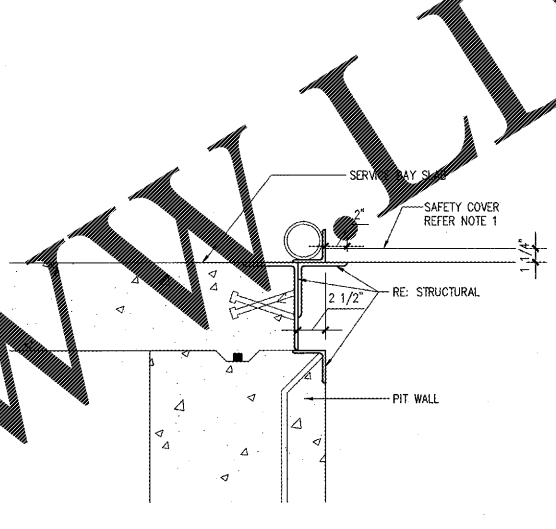
SHEET: **YA7**



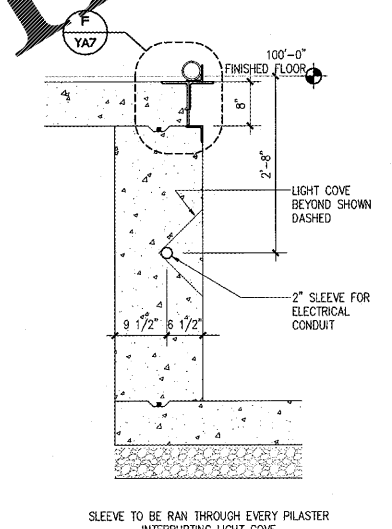
**H LADDER SECTION**  
 Scale: 1" = 1'-0"



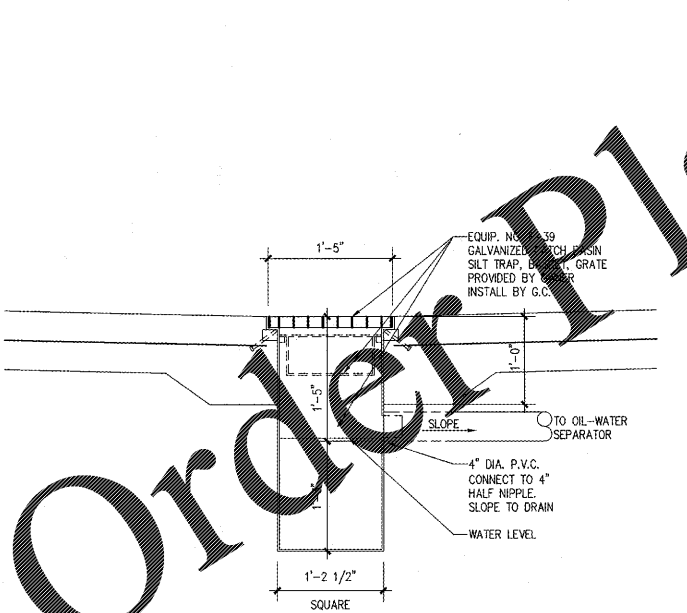
**G STAIR SECTION**  
 Scale: 1/2" = 1'-0"



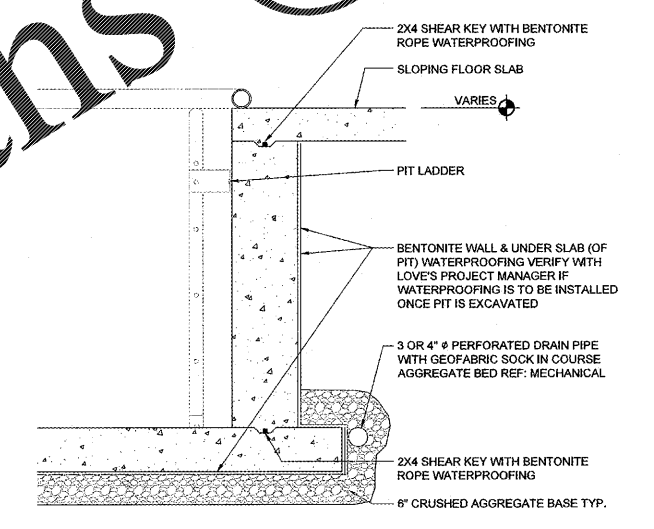
**F RAIL DETAIL**  
 Scale: 1 1/2" = 1'-0"



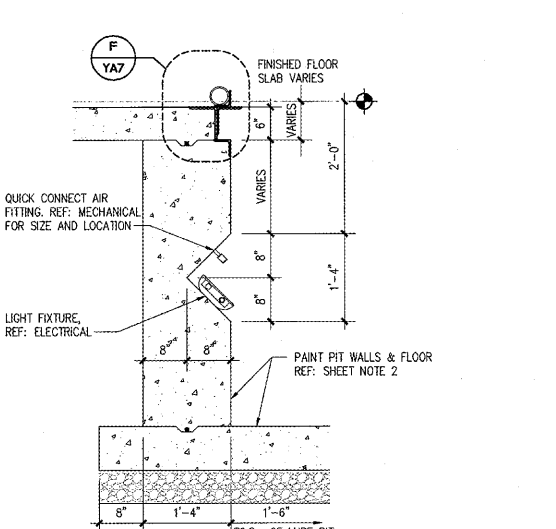
**E WALL SECTION**  
 Scale: 3/4" = 1'-0"



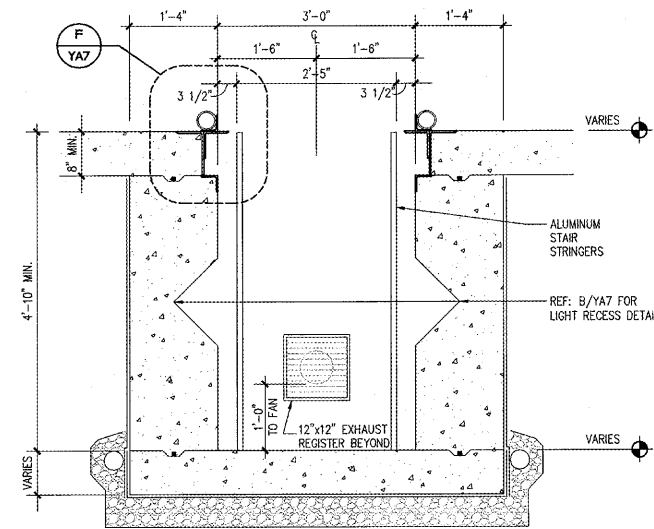
**D CATCH BASIN SECTION**  
 Scale: 1" = 1'-0"



**C PIT WATERPROOFING**  
 Scale: 3/4" = 1'-0"



**B LIGHT RECESS (WALL) SECTION**  
 Scale: 3/4" = 1'-0"



**A LUBE PIT SECTION**  
 Scale: 3/4" = 1'-0"

03-18-20613.dwg - User: robertmerriden  
 L:\03-18-20613.dwg - Location: Meadowview, VA 61603\DCD\DCS\Mechanical\1601 YA7 LUBE PIT SECTIONS.dwg

Order Plans @ WWW.LDLine.com