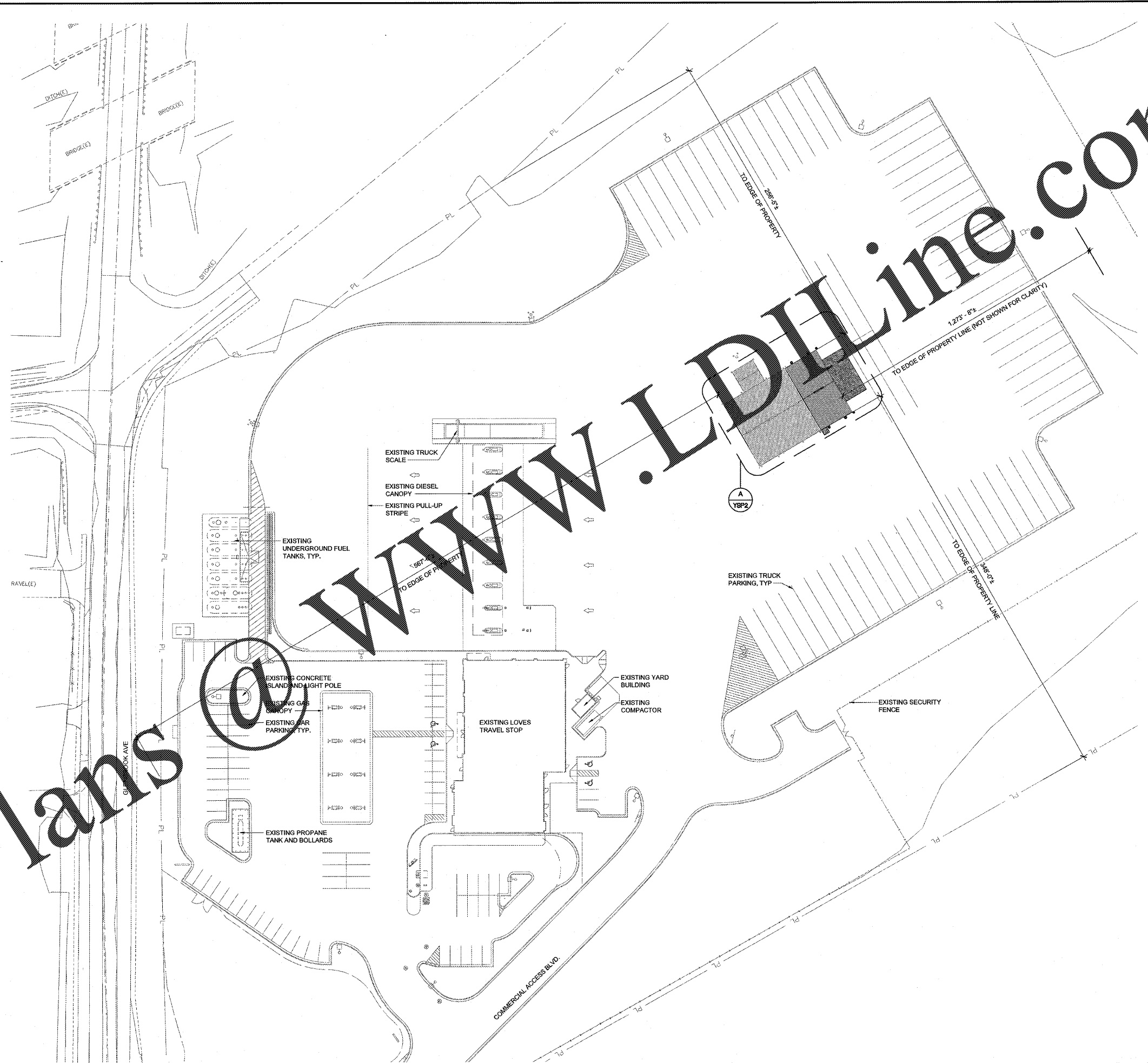
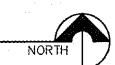


02/25/2018 4:23pm - User: robert.torres@hfa.com
C:\02018-2018\13365\13365-0000\CS\Mechanical\103 YSP1 OVERALL SITE PLAN.dwg

Order Plans @ www.LDOnline.com



A SITE PLAN
SCALE 1" = 40'-0"



HFA
ARCHITECTS
ENGINEERS
INTERIORS

HARRISON FRENCH
ASSOCIATES, LTD.

1705 S. Hampton Blvd., Suite 3
Bentonville, Arkansas 72712
479.273.7780
488.520.9685
www.hfa-ae.com

STIPULATION FOR REUSE
THIS DOCUMENT IS THE PROPERTY OF HFA ARCHITECTS ENGINEERS INTERIORS AND IS TO BE USED ONLY FOR THE PROJECT AND SITE SPECIFICALLY IDENTIFIED HEREIN. IT IS NOT TO BE REPRODUCED, COPIED, OR TRANSMITTED IN ANY FORM OR BY ANY MEANS, ELECTRONIC OR MECHANICAL, INCLUDING PHOTOCOPYING, RECORDING, OR BY ANY INFORMATION STORAGE AND RETRIEVAL SYSTEM, WITHOUT THE WRITTEN PERMISSION OF HFA ARCHITECTS ENGINEERS INTERIORS.

13365 GLENBROOK AVE
MEADOWVIEW, VA 24361

**LIGHT MECHANICAL
SERVICE ADDITION**

PROJECT NUMBER: 03-18-20613

Loves
Travel Stop &
Country Stores

COMMONWEALTH OF VIRGINIA

BOGUE L. EBBRECHT
Lic. No. 016472

ARCHITECT

OCT 26 2018

ISSUE BLOCK	

STORE NO.	613
DOCUMENT DATE:	10/25/18
CHECKED BY:	RAF
DRAWN BY:	RWM
PROTO CYCLE:	

OVERALL
SITE PLAN

SHEET:
YSP1