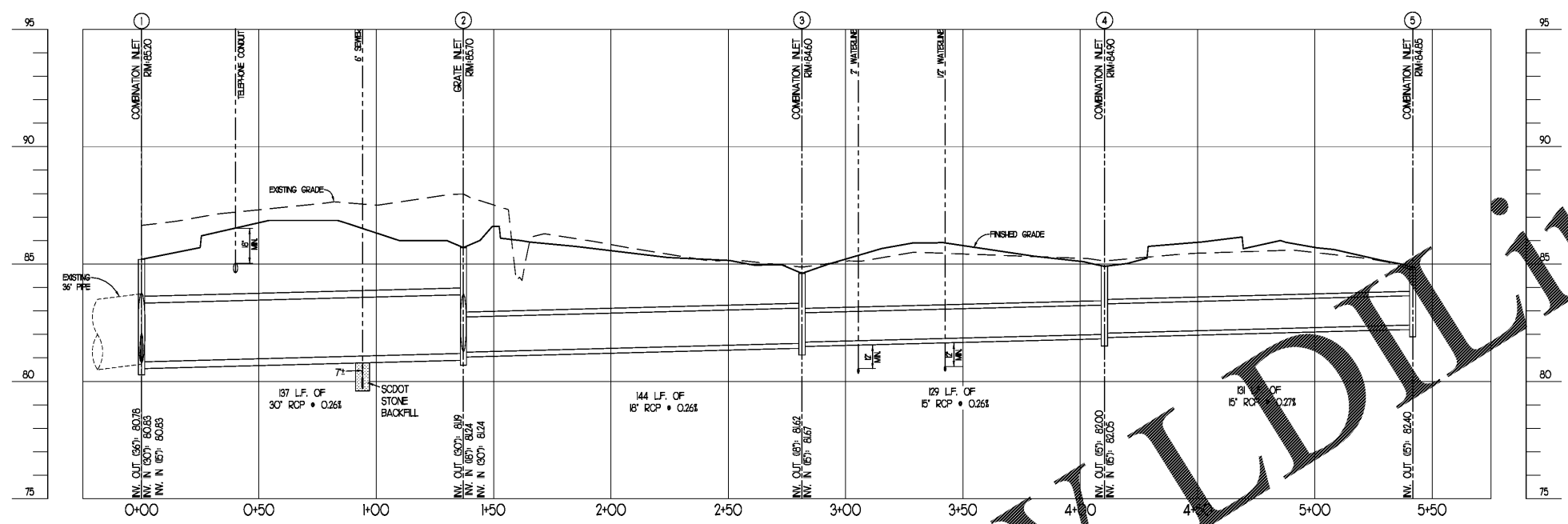
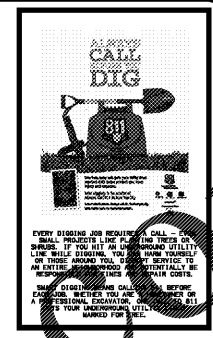
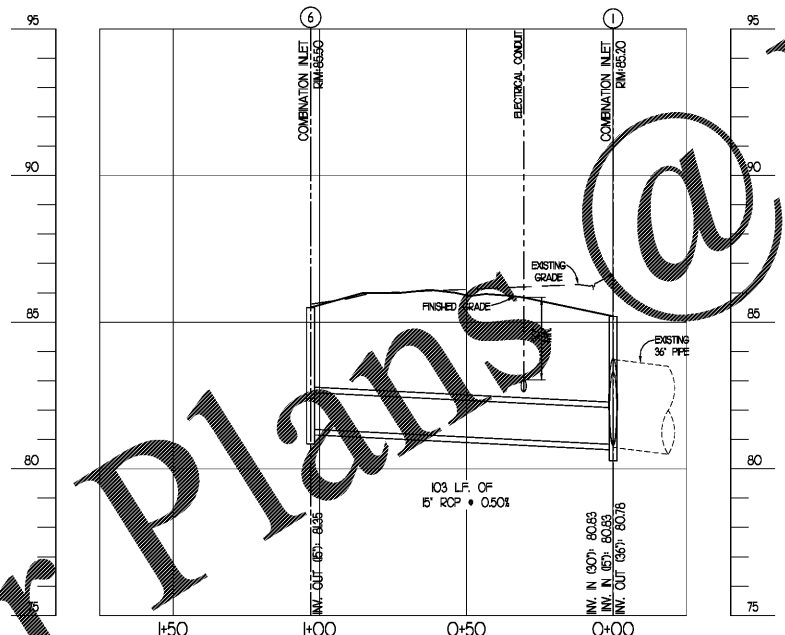


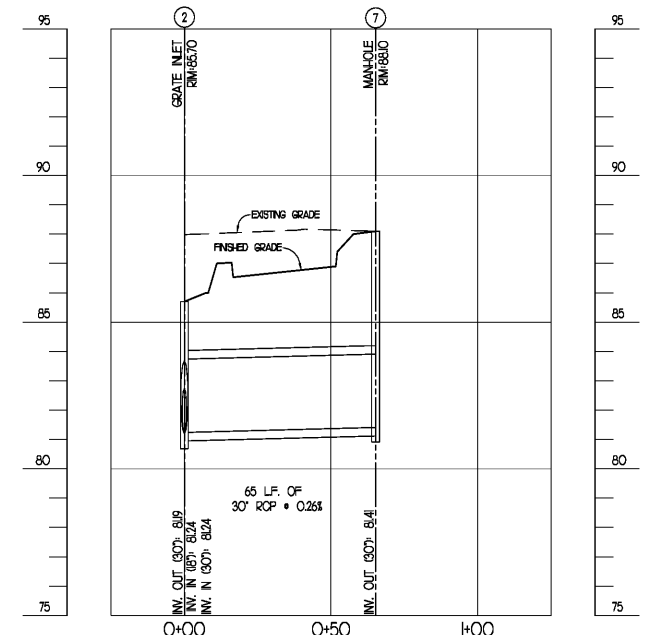
REVISIONS	BY
1-22-19 ADDRESS COUNTY REVIEW COMMENTS	DAC



STORM DRAIN PROFILE 1 - 5



STORM DRAIN PROFILE 1 - 6



STORM DRAIN PROFILE 2 - 7

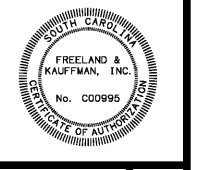
DRAINAGE STRUCTURE NO.'S 1, 4, 5, & 6 TO BE EQUIPPED WITH 'SNOOT' DEVICE, SEE SHEET 11.

STORM DRAIN PIPE SPECIFICATION:
 TYPE I: REINFORCED CONCRETE PIPE (RCP) CLASS II, WALL B PER ASTM C-76 (ASTM C-76M) PER SPECIFICATIONS.
 TYPE II: HIGH PERFORMANCE POLYETHYLENE PIPE (HPPE) PER ASTM F2736 & F2881 AND AASHTO M330 WITH BELL WITH WATER TIGHT BELL AND SPIGOT JOINTS PER ASTM D322 AND FITTINGS PER ASTM F949 PERMITTED DIAMETER IS 12" THROUGH 36".
 TYPE III: HIGH DENSITY POLYETHYLENE PIPE (HDPE) SMOOTH INTERIOR/ANNULAR EXTERIOR PER AASHTO M252, M254 AND/OR ASTM F2306 WITH BELL AND SPIGOT WATER-TIGHT JOINTS PER ASTM D322. PERMITTED DIAMETER IS 12" THROUGH 36".
 ALL PIPES IN PUBLIC RIGHTS-OF-WAY TO BE CLASS II RCP, UNLESS OTHERWISE NOTED

STORMDRAIN PROFILES



FREELAND and KAUFFMAN, INC.
 Engineers • Landscape Architects
 209 West Stone Avenue
 Greenville, South Carolina 29609
 864-233-5497



Parker's kitchen
 17 W. McDONOUGH STREET
 SAVANNAH, GA 31401
 CANE BAY (P#1006)

DRAWN	CXD
CHECKED	BTS
DATE	1/22/2019
SCALE	AS NOTED
DRAWING	

Order Plans @

WWW.LDOnline.com