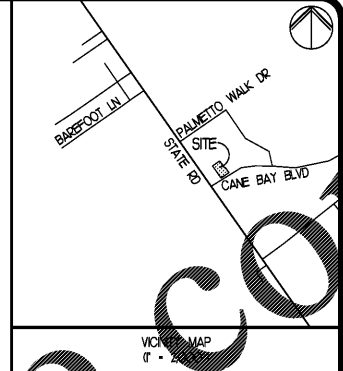
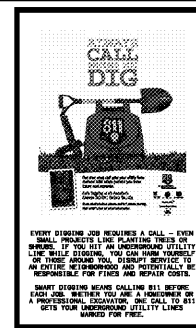


REVISIONS	BY
1-22-P ADDRESS COUNTY REVIEW COMMENTS	DAC



PROPOSED	DESCRIPTION
(A)	NUMBER OF SPACES PER ROW
(B)	CURB & GUTTER
(C)	FENCE
(D)	SIGN
(E)	CONCRETE FLUME
(F)	HANDICAP SYMBOL
(G)	CONCRETE PAVEMENT
(H)	STANDARD DUTY PAVING
(I)	HEAVY DUTY PAVING
(J)	BRICK PAVERS
(K)	LIGHT POLE
(L)	GRAVE HEADSTONE

### IMPERVIOUS AREA

MAXIMUM IMPERVIOUS AREA ALLOWED PER PREVIOUS REPORT = 80%  
 TOTAL PROJECT AREA = 1621 ACRES  
 PROPOSED IMPERVIOUS AREA UPON COMPLETION = 1269 ACRES (72%)

REFERENCE - DRAINAGE BASIN STUDY FOR CANE BAY PLANTATION, PREPARED BY THOMAS & HUTTON, DATED 3/16/2005, LATEST REVISION DATED 8/19/2016.

### PARKING CALCULATIONS

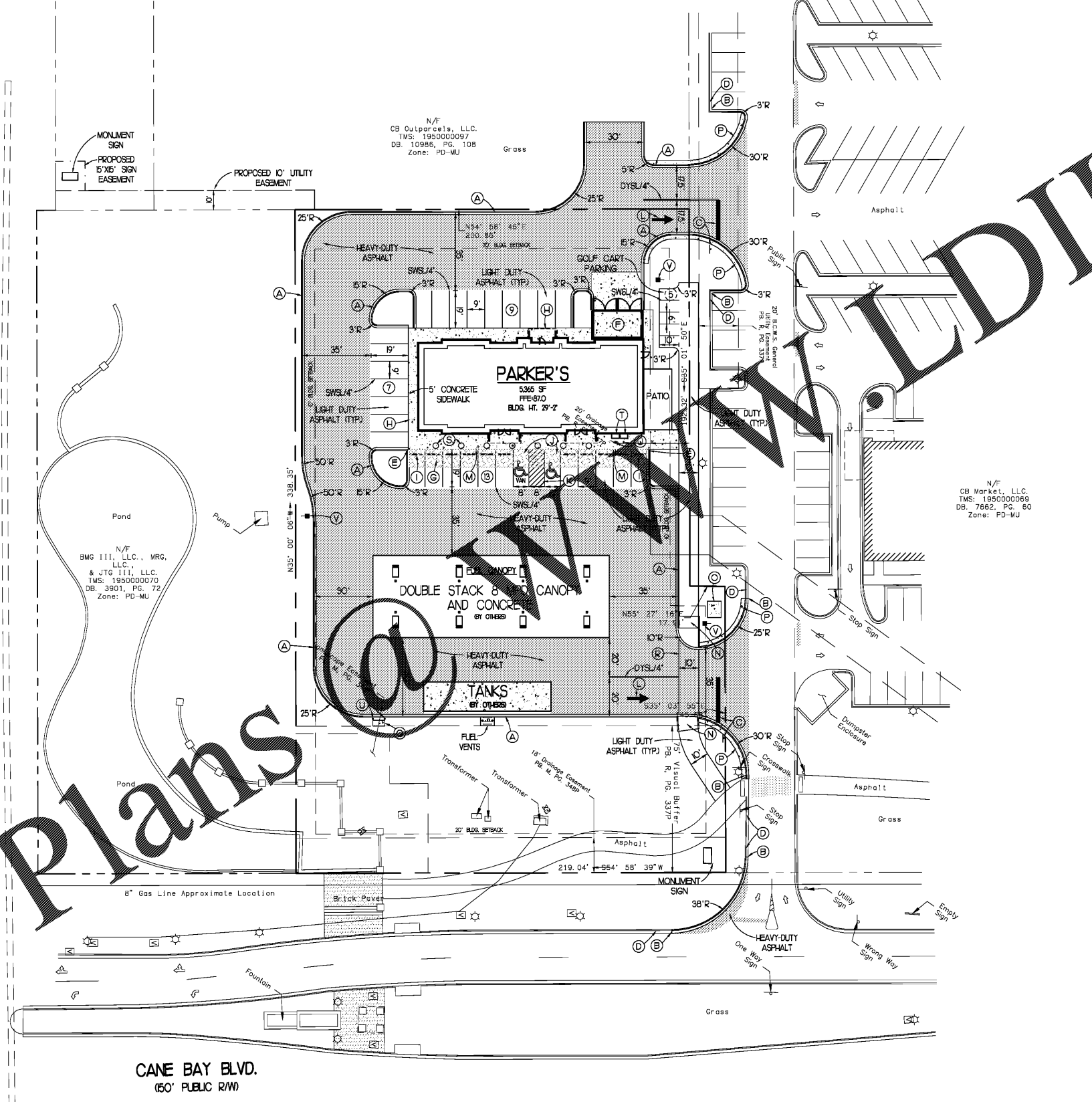
TENANT	AREA SF	REQUIRED RATIO	REQUIRED PARKING	PARKING PROVIDED	RATIO PROVIDED
PARKER'S	5,365 SF	1 SPACE FOR EACH 300 SF.	18	29	1 SPACE FOR EACH 185 SF.

5 GOLF CART SPACES PROVIDED (NOT INCLUDED IN PARKING CALCULATIONS)

- ### SITE LEGEND
- (A) 18" CURB & GUTTER
  - (B) TIE TO EXISTING CURB & GUTTER
  - (C) STOP BAR WITH STOP SIGN (R/R), SEE DETAILS
  - (D) EXISTING CURB & GUTTER TO REMAIN
  - (E) TAPER CURB TO FLUSH
  - (F) DUMPSTER ENCLOSURE (R/R)
  - (G) BRICK PAVERS (R/R) DETAILS
  - (H) TURN DOWN SIDEWALK SEE DETAIL
  - (I) WHEEL STOP
  - (J) ACCESSIBLE PARKING SPACE, TYPICAL. SEE DETAIL SHEET FOR ACCESSIBLE SPACE WALL MOUNTED SIGN AND SYMBOL. 'VAN' INDICATES VAN ACCESSIBLE SPACE.
  - (K) STRIPPED ISLAND, 4" SINGLE WHITE LINES • 45' & 2' O.C.
  - (L) ON-SITE DIRECTIONAL ARROW, SEE DETAILS
  - (M) SIDEWALK TO BE FLUSH
  - (N) ADA ACCESSIBLE RAMP, SEE DETAILS
  - (O) RELOCATED CONCRETE TRANSFORMER PAD, COORDINATE WITH BERKELEY ELECTRIC CO-OP & SHOPPING CENTER OWNER
  - (P) 2" CONCRETE CURB BACKING AT ENTRANCES
  - (Q) AIR / VACUUM EQUIPMENT
  - (R) CROSSWALK, SEE DETAILS
  - (S) 3" DIAMETER CONCRETE SPHERE BOLLARD, CONTRACTOR TO COORDINATE EXACT LOCATION WITH OWNER
  - (T) TWO (2) 48" WIDE X 32" DEEP PROPANE GAGES WITH TWO (2) 48" TALL STEEL BOLLARDS PLACED THREE (3) FEET IN FRONT OF PROPANE GAGES. SEE ARCHITECTURAL DRAWINGS FOR DETAILS. CONTRACTOR TO PROVIDE & COORDINATE EXACT LOCATION WITH OWNER
  - (U) 48" TALL STEEL BOLLARD, SEE ARCHITECTURAL DRAWINGS FOR DETAILS. CONTRACTOR TO PROVIDE & COORDINATE EXACT LOCATION WITH OWNER
  - (V) SITE LIGHTING, PLACED 3" FROM BACK OF CURB, (TYP.)

### EXTERIOR LIGHTING NOTE:

ANY & ALL PROPOSED EXTERIOR LIGHTING (INCLUDING POLE MOUNTED & BUILDING MOUNTED LIGHTING) MUST DEMONSTRATE COMPLIANCE WITH ARTICLE 15 OF THE BERKELEY COUNTY CODE OF ORDINANCES, AND MUST BE ARRANGED SO THAT LIGHT DOES NOT INTERFERE WITH TRAFFIC, IS SHIELDED OR DIRECTED AWAY FROM ADJOINING RESIDENCES, AND PRODUCES NO GLARE ACROSS RESIDENTIAL PROPERTY BOUNDARIES.



### PAINT STRIPING LEGEND

SWSL/4" - SINGLE WHITE SOLID LINE / 4" WIDE  
 SYSL/4" - SINGLE YELLOW SOLID LINE / 4" WIDE  
 DYSL/4" - DOUBLE YELLOW SOLID LINE / 4" WIDE EACH  
 SWSL/24" - SINGLE WHITE SOLID LINE / 24" WIDE

NOTE: REF. GEOTECHNICAL REPORT BY OTHERS FOR PAVEMENT SECTION INFORMATION

- ### SITE PLAN NOTES
- CONTRACTOR SHALL REFER TO THE ARCHITECTURAL PLANS FOR THE EXACT LOCATION OF UTILITY ENTRANCES, BUILDING DIMENSIONS, ROOF LEADERS, EXIT DOORS, EXIT RAMPS AND PORCHES.
  - ALL DIMENSIONS ARE TO BUILDING FACE, FACE OF CURB, EDGE OF ASPHALT OR EDGE OF SIDEWALK UNLESS NOTED OTHERWISE.
  - CONTRACTOR SHALL PROVIDE ALL LABOR AND MATERIALS FOR THE INSTALLATION OF TRAFFIC SIGNAGE AND PAVEMENT MARKINGS AS SHOWN ON THE CONSTRUCTION PLANS.
  - ALL NON-LANDSCAPED ISLANDS SHALL BE PAINTED WITH STRIPES 4" WIDE, AT 45' AND 2 FEET O.C.
  - ALL STRIPING SHALL BE 4" WIDE UNLESS NOTED OTHERWISE.
  - CONTRACTOR SHALL COORDINATE FINAL LOCATION OF THE SITE SIGNS WITH PARKER'S AND SHOPPING CENTER DEVELOPER.
  - CONTRACTOR SHALL REFER TO OTHER PLANS WITHIN THIS CONSTRUCTION SET FOR OTHER PERTINENT INFORMATION.
  - ALL WORK AND MATERIALS SHALL COMPLY WITH ALL BERKELEY COUNTY REGULATIONS AND CODES AND OSHA STANDARDS.
  - ALL DISTURBED AREAS ARE TO RECEIVE FOUR INCHES OF TOPSOIL SEED, MULCH AND WATER UNTIL A HEALTHY STAND OF GRASS IS ESTABLISHED, UNLESS OTHERWISE NOTED.
  - CONTRACTOR IS RESPONSIBLE FOR OBTAINING APPROVAL FROM SCEG AND BERKELEY COUNTY FOR THE LOCATION AND HEIGHT OF ALL SIGNAGE BEFORE CONDUIT AND WIRING IS INSTALLED.
  - EXISTING STRUCTURES WITHIN CONSTRUCTION LIMITS ARE TO BE ABANDONED, REMOVED OR RELOCATED AS NECESSARY. ALL COST SHALL BE INCLUDED IN BASE BID. (R/R) DEMOLITION PLAN.
  - CONTRACTOR SHALL BE RESPONSIBLE FOR ALL RELOCATIONS, INCLUDING BUT NOT LIMITED TO, ALL UTILITIES, STORM DRAINAGE SIGNS, TRAFFIC SIGNALS & POLES, ETC. AS REQUIRED. ALL WORK SHALL BE IN ACCORDANCE WITH GOVERNING AUTHORITIES SPECIFICATIONS AND SHALL BE APPROVED BY SUCH. ALL COST SHALL BE INCLUDED IN BASE BID.
  - SITE BOUNDARY, TOPOGRAPHY, UTILITY AND ROAD INFORMATION TAKEN FROM A SURVEY BY SURVEY MATTERS, LLC.
  - CONTRACTOR IS RESPONSIBLE FOR REMOVING ALL ITEMS/FEATURES IN CONFLICT WITH PROPOSED IMPROVEMENTS AND FOR INCLUDING ALL COSTS IN BASE BID.

**FREELAND and KAUFFMAN, INC.**  
 Engineers • Landscape Architects  
 209 West Stone Avenue  
 Greenville, South Carolina 29609  
 864-233-5497



**Parker's kitchen**  
 17 W. MCDONOUGH STREET  
 SAVANNAH, GA 31401  
**CANE BAY (P#1006)**

DRAWN	CRD
CHECKED	BTS
DATE	1/22/2019
SCALE	AS NOTED
DRAWING	

Order Plans

SITE PLAN

