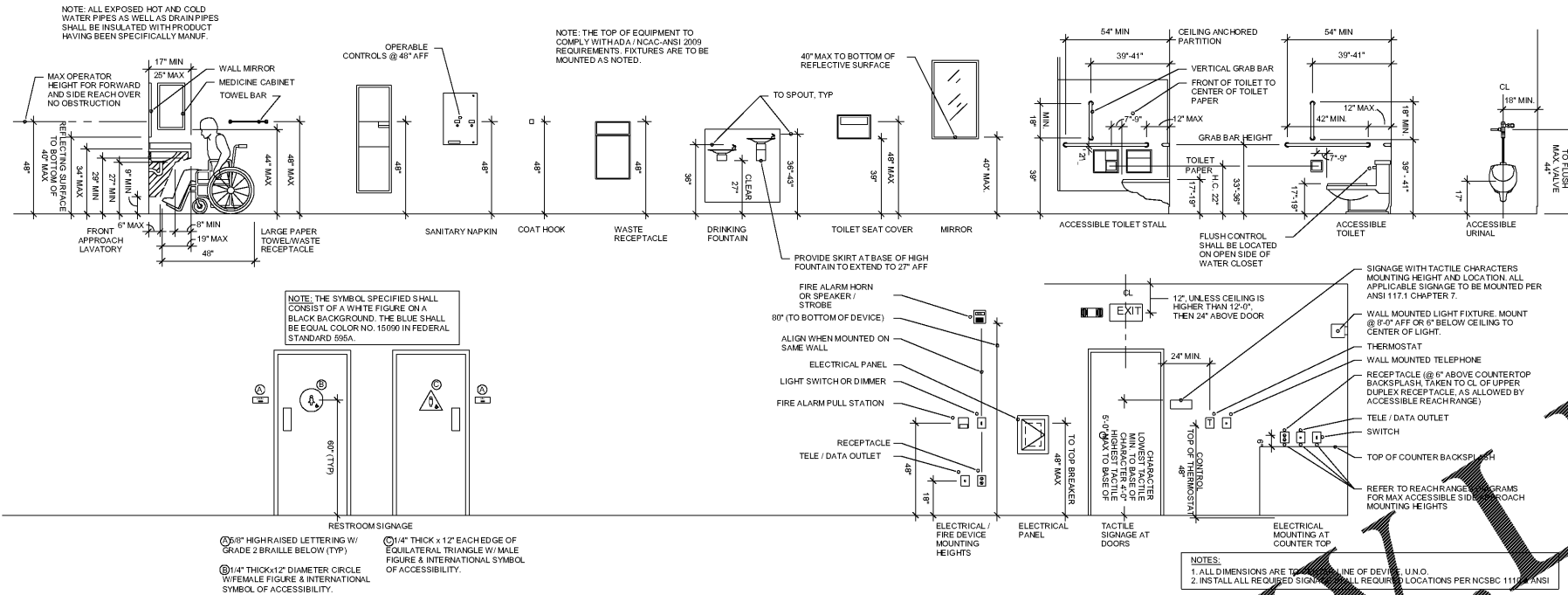


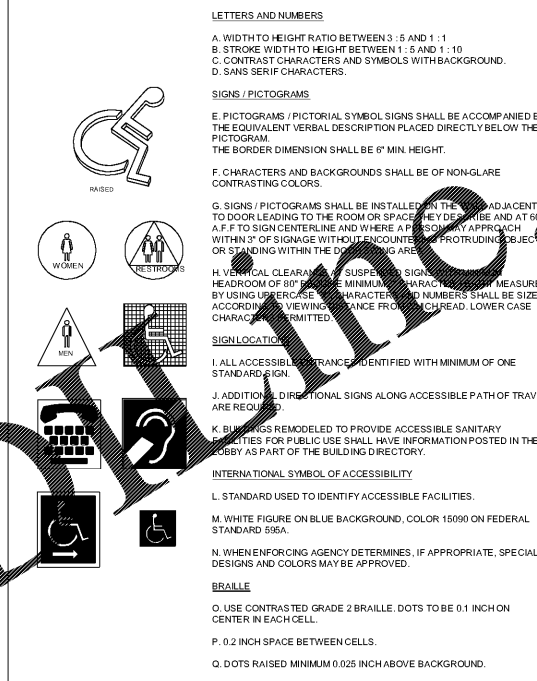
ACCESSIBLE INSTALLATION STANDARDS (NTS) - GENERAL -

GENERAL INSTALLATION REQUIREMENTS

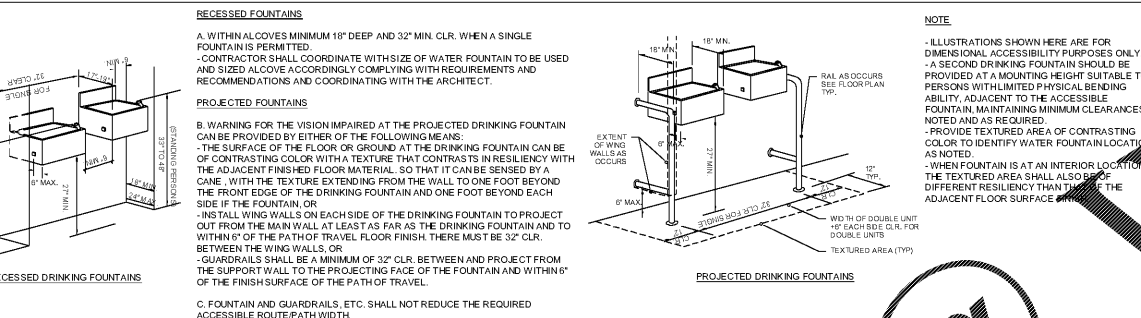


THIS DRAWING IS PROVIDED TO HELP A GENERAL CONTRACTOR TO INSTALL BUILDING ELEMENTS IN COMPLIANCE WITH ANSII 117.1-2017, FAIR HOUSING ACT DESIGN MANUAL 1998 AND 2010 ADA STANDARDS FOR ACCESSIBLE DESIGN. IT IS NOT OUR INTENT TO LIST COMPLETE REGULATIONS & GUIDELINES IN THOSE DOCUMENTS. GENERAL CONTRACTOR IS RESPONSIBLE TO INSTALL ALL THE BUILDING ELEMENTS ACCORDING TO ALL APPLICABLE REGULATIONS REGARDLESS OF WHETHER OR NOT IT IS SHOWN HERE.

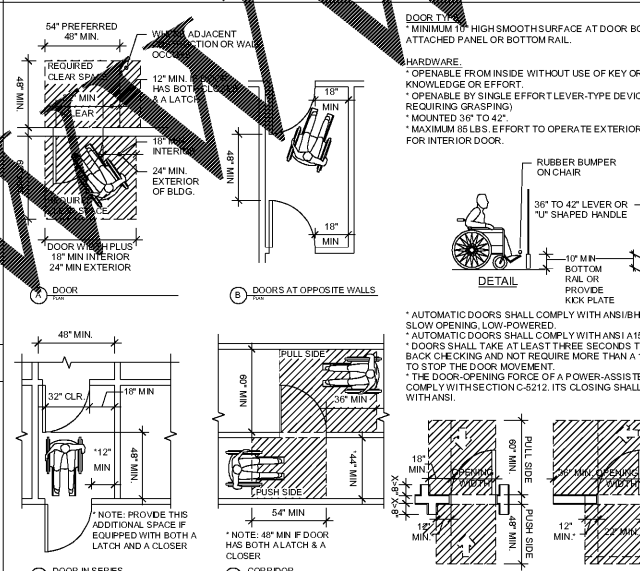
ACCESSIBILITY SIGNS AND PICTOGRAMS (NTS)



ACCESSIBLE DRINKING FOUNTAIN REQUIREMENTS (NTS)



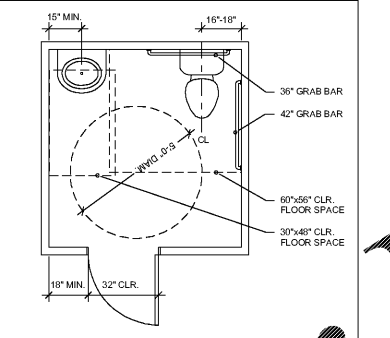
ACCESSIBLE CLEAR SWING MANUAL DOORS AND GATES (NTS)



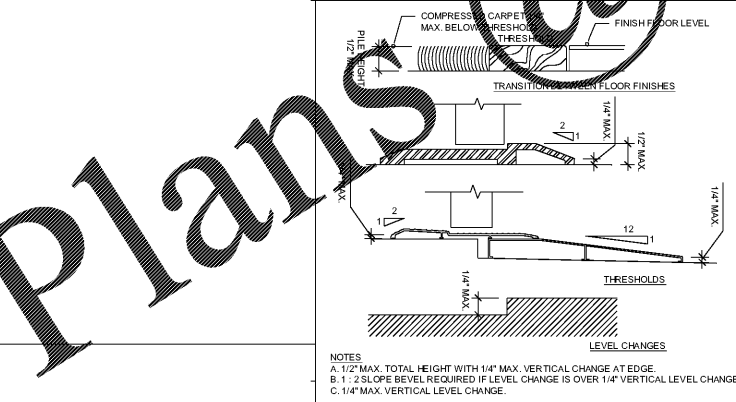
GENERAL NOTES

1. ACCESSIBLE ROUTES SHALL COMPLY WITH FHM 1998 REQUIREMENTS 1, 2, 4, ANSII 2017 CHAPTER 4, INCLUDING SECTIONS 401-410, AND 2010 ADA STD CHAPTER 4, INCLUDING SECTIONS 401-410.
2. PROTRUDING OBJECTS ON CIRCULATION PATHS WITHIN COMMON USE AREAS TO COMPLY WITH ANSII 2017 SECTION 7, INCLUDING:
 - A. PROTRUSION LIMITS: OBJECTS WITH LEADING EDGES MORE THAN 27\"/>
3. PROTRUDING OBJECTS ON CIRCULATION PATHS WITHIN PUBLIC USE AREAS TO COMPLY WITH 2010 ADA STD SECTION 307, INCLUDING:
 - A. 2010 ADA STD SECTION 307.2: PROTRUSION LIMITS
 - B. 2010 ADA STD SECTION 307.3: POST MOUNTED OBJECTS
 - C. 2010 ADA STD SECTION 307.4: VERTICAL CLEARANCE
 - D. 2010 ADA STD SECTION 307.5: REQUIRED CLEAR WIDTH
4. FLOOR AND GROUND SURFACES (INCLUDING FLOOR MATERIAL TRANSITIONS) IN COMMON USE AREAS SHALL BE STABLE, FIRM, AND SLIP-RESISTANT AND SHALL COMPLY WITH ANSII 2017 SECTION 302, INCLUDING:
 - A. ANSII 2017 SECTION 302.2: CARPET
 - B. ANSII 2017 SECTION 302.3: OPENINGS
5. CHANGES IN LEVEL (INCLUDING FLOOR MATERIAL TRANSITIONS) IN COMMON USE AREAS SHALL COMPLY WITH ANSII 2017 SECTION 303, INCLUDING:
 - A. ANSII 2017 SECTION 303.2: VERTICAL
 - B. ANSII 2017 SECTION 303.3: BEVELED
 - C. ANSII 2017 SECTION 303.4: RAMPED
6. CHANGES IN LEVEL (INCLUDING FLOOR MATERIAL TRANSITIONS) WITHIN COVERED TENANT UNITS TO COMPLY WITH ANSII 2017 SECTION 403: WALKING SURFACES
7. FLOOR AND GROUND SURFACES ALONG ACCESSIBLE ROUTES AND IN ACCESSIBLE ROOMS AND SPACES WITH PUBLIC USE AREAS SHALL BE STABLE, FIRM, AND SLIP-RESISTANT AND SHALL COMPLY WITH 2010 ADA STD SECTION 302.1, INCLUDING:
 - A. 2010 ADA STD SECTION 302.2: CARPET
 - B. 2010 ADA STD SECTION 302.3: OPENINGS
8. CHANGES IN LEVEL (INCLUDING FLOOR MATERIAL TRANSITIONS) IN PUBLIC USE AREAS SHALL COMPLY WITH 2010 ADA STD SECTION 303.1, INCLUDING:
 - A. 2010 ADA STD SECTION 303.2: VERTICAL
 - B. 2010 ADA STD SECTION 303.3: BEVELED
 - C. 2010 ADA STD SECTION 303.4: RAMPED

TYPICAL ACCESSIBLE SINGLE TOILET (NTS)



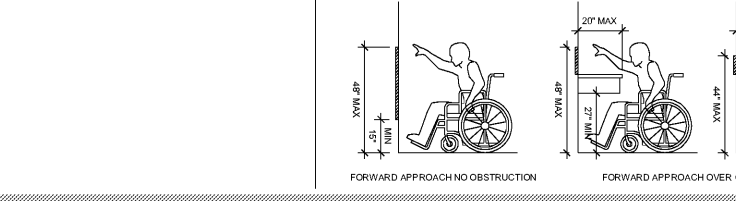
THRESHOLD REQUIREMENTS (NTS)



GENERAL CLEARANCES (NTS)



REACH RANGES (NTS)



PARKER'S CANE BAY

THE PARKER COMPANIES
17 WEST MCDONOUGH ST.
SAVANNAH, GA. 31401

Parker's

Revisions

NO.	DATE	DESCRIPTION

ADA DIAGRAMS & NOTES

DATE: NTS
DATE: 11/21/19
DRAWN BY: F. JEN
CHECKED BY: F. JEN

G002

2/4/2019 2:03:07 PM