

## ELECTRICAL PANEL SCHEDULE

PANEL: A		SERVICE: 120/208V, 3P, 4W + GND		FEEDERS: SEE ONE LINE DIAGRAM	
PANEL TYPE: SQ-D "NOOD" OR EQUAL		BUS RATING: 200 A M.L.O.		MOUNTING: NEMA-1 RECESSED	
LOAD DESCRIPTION	NOTE	LOAD VOLT-AMP	WIRE	CB/P	LOAD DESCRIPTION
AREA LIGHTS	**	1080	10	20/2	1
AREA LIGHTS	**	1080	10	20/2	3
AREA LIGHTS	**	1080	10	20/2	5
AREA LIGHTS	**	1080	10	20/2	7
PYLON SIGNS *	**	1200	12	20/1	9
SECONDARY PYLON SIGN *	**	1200	12	20/1	11
DRIVE-THRU MENU SIGNS		720	12	20/1	13
DATA PRINTER RECEPTACLES	GFCI	600	12	20/1	15
DINING ROOM RECEPTACLES	**	600	12	20/1	17
CHANNEL LETTERS / LOGO	**	1200	12	20/1	19
RED LED LIGHTS	**	240	10	20/1	21
CHANNEL LETTERS / LOGO	**	1200	12	20/1	23
DINING ROOM RECEPTACLES	**	1200	12	20/1	25
EXTERIOR BUILDING LIGHTS	**	1475	12	20/1	27
COOL/FRZR LIGHTS/DOOR HTR/H.E.		400	12	20/1	29
ROOF/EXTERIOR RECEPTACLES		720	12	20/1	31
SERVICE COUNTER/CORRIDOR		360	12	20/1	33
D/T SPEED/SERVICE #90C CAMERA		540	12	20/1	35
KITCHEN AREA LIGHTS		1200	12	20/1	37
CRAW/STORAGE RECEPTACLES	GFCI	540	12	20/1	39
CHANNEL LETTERS / LOGO	**	1200	12	20/1	41
<b>TOTAL CONNECTED LOAD:</b>		38,290 VA	<b>PHASE 'A':</b> 13200 VA		<b>NOTES:</b> (TC) = WIRE THROUGH CONTACTOR.
<b>TOTAL CONNECTED AMPS:</b>		106 AMP	<b>PHASE 'B':</b> 13805 VA		(HACR) = HACR TYPE BREAKER.
			<b>PHASE 'C':</b> 11285 VA		(LO) = LOCKED BREAKER.
					(GFCI) = GROUND FAULT CIRCUIT INTERRUPTER.
					(IG) = WIRE SEPARATE TO ISOLATED GROUND BUS.

## ELECTRICAL PANEL SCHEDULE

PANEL: B		SERVICE: 120/208V, 3P, 4W + GND		FEEDERS: SEE ONE LINE DIAGRAM	
PANEL TYPE: SQ-D "NOOD" OR EQUAL		SIZE: 200 AMP M.L.O.		MOUNTING: NEMA-1 RECESSED	
LOAD DESCRIPTION	NOTE	LOAD VOLT-AMP	WIRE	CB/P	LOAD DESCRIPTION
SELF-SERVE DRINK DISPENSER #10		600	12	20/1	1
P.O.S. RECEPTACLES GFCI	IG/LO	1320	12	20/1	3
P.O.S. RECEPTACLES GFCI	IG/LO	1320	12	20/1	5
DRIVE-THRU DRINK DISPENSER #11		600	12	20/1	7
REAR DOOR BUZZER		720	12	20/1	9
DOOR ALARM		720	12	20/1	11
WATER HEATER		300	12	20/1	13
SERVICE CTR/D.T. RECEPT.		576	12	20/1	15
P.O.S. RECEPTACLES	IG/LO	800	12	20/1	17
SPARE		400	20/1	19	
COFFEE/TEA BREWER #17		1820	12	20/2	21
		1820	12	20/2	23
		1820	12	20/2	25
GREASE STORAGE UNIT #31B		500	12	20/1	27
WATER BOOSTER #10		1428	12	20/1	29
SPARE			20/1	31	
SPARE			20/1	33	
SPARE			20/1	35	
SPARE			20/1	37	
SPARE			20/1	39	
SPARE			20/1	41	
<b>TOTAL CONNECTED LOAD:</b>		45,472 VA	<b>PHASE 'A':</b> 14206 VA		<b>NOTES:</b> (TC) = WIRE THROUGH CONTACTOR.
<b>TOTAL CONNECTED AMPS:</b>		131 AMP	<b>PHASE 'B':</b> 15918 VA		(HACR) = HACR TYPE BREAKER.
			<b>PHASE 'C':</b> 15348 VA		(LO) = LOCKED BREAKER.
					(GFCI) = GROUND FAULT CIRCUIT INTERRUPTER.
					(IG) = WIRE SEPARATE TO ISOLATED GROUND BUS.

## ELECTRICAL PANEL SCHEDULE

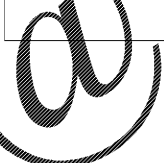
PANEL: D		SERVICE: 120/208/240V, 3P, 4W + GND		FEEDERS: SEE ONE LINE DIAGRAM	
PANEL TYPE: SQ-D "NOOD" OR EQUAL		BUS RATING: 150A M.L.O.		MOUNTING: FURNISHED BY EQUIPMENT SUPPLIER	
LOAD DESCRIPTION	NOTE	LOAD VOLT-AMP	WIRE	CB/P	LOAD DESCRIPTION
PHU/MICROWAVE		1920	12	20/2	1
PHU/MICROWAVE		1920	12	20/2	3
PHU/MICROWAVE		1920	12	20/2	5
CONVEYOR TOASTER		1920	12	20/2	7
VERTICAL TOASTER		2880	10	30/2	9
HEATED SURFACES		2880	10	30/2	11
SPACE		240	12	20/1	13
UTILITY		1920	12	20/1	15
SPACE					17
<b>TOTAL CONNECTED LOAD:</b>		40560 VA	<b>PHASE 'A':</b> 15360 VA		<b>NOTES:</b> (TC) = WIRE THROUGH CONTACTOR.
<b>TOTAL CONNECTED AMPS:</b>		112 AMP	<b>PHASE 'B':</b> 16320 VA		(HACR) = HACR TYPE BREAKER.
			<b>PHASE 'C':</b> 10800 VA		(LO) = LOCKED BREAKER.
					(GFCI) = GROUND FAULT CIRCUIT INTERRUPTER.
					(IG) = WIRE SEPARATE TO ISOLATED GROUND BUS.

NOTE: ALL RECEPTACLES TO PANEL "D" MUST BE GROUND TO ISOLATED GROUND BUS.

## ELECTRICAL PANEL SCHEDULE

PANEL: M		A.I.C. RATING: 42,000		SERVICE: 120/208V, 3P, 4W + GND		FEEDERS: SEE ONE LINE DIAGRAM	
PANEL TYPE: SQ-D "1-LINE" OR EQUAL		SIZE: 600 AMP M.L.O.		MOUNTING: NEMA-1 RECESSED			
LOAD DESCRIPTION	NOTE	LOAD VOLT-AMP	WIRE	CB/P	LOAD DESCRIPTION	NOTE	LOAD DESCRIPTION
PANEL A		13200	3/0	200/3	1		PANEL B
		13805					
		11285					
RTU-1	HACR	3725	#8	50/3	3		PANEL D
		3725					
RTU-3	HACR	2544	#10	40/3	5		RTU-2
		2544					
EF-1 #23		350	#12	20/2	7		CONVECTION OVEN #36
		350					
SPACE							
EF-2 #33		350	#12	20/2	9		FROZEN BEV. DISP.
		350					
WALK-IN BOX COOLER CONDENSER		465	#12	20/2	11		SPACE
		465					
WALK-IN BOX FREEZER CONDENSER		3024	#10	30/3	13		RTU-4
		3024					
		3024					
<b>TOTAL CONNECTED LOAD:</b>		179921 VA	<b>PHASE 'A':</b> 58584 VA		<b>NOTES:</b> (TC) = WIRE THROUGH CONTACTOR.		
<b>TOTAL CONNECTED AMPS:</b>		500 AMPS	<b>PHASE 'B':</b> 61263 VA		(HACR) = HACR TYPE BREAKER.		
			<b>PHASE 'C':</b> 60074 VA		(LO) = LOCKED BREAKER.		
					(GFCI) = GROUND FAULT CIRCUIT INTERRUPTER.		
					(IG) = WIRE SEPARATE TO ISOLATED GROUND BUS.		

THIS LOCATION IS TO BE CONSTRUCTED PER SEISMIC CATEGORY "D". PROVIDE LATERAL BRACING OF CONDUIT AND EQUIPMENT SUPPORT AS REQUIRED BY FEMA 413 DOCUMENT.



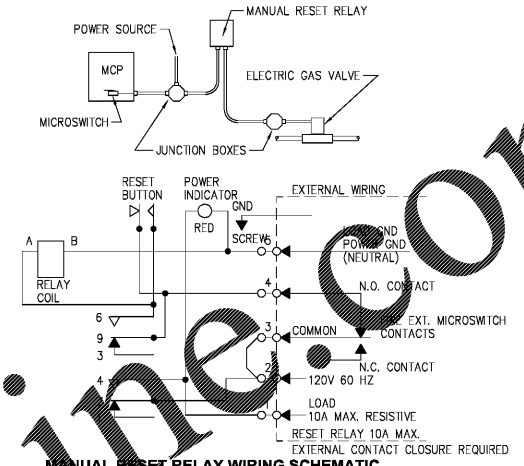
### LOAD SUMMARY

**KITCHEN LOADS**  
 A 0  
 B 34840  
 C 15360  
 D 25962  
 TOTAL 76162 X 65% = 49505

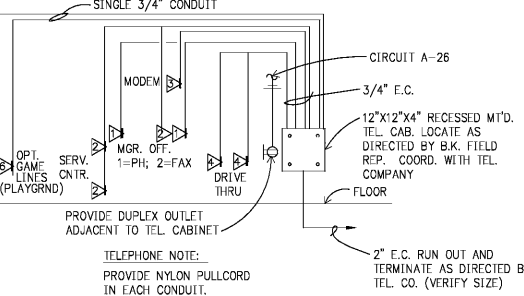
**LIGHTING LOADS**  
 A 16330  
 B 0  
 C 0  
 D 0  
 M 0  
 TOTAL 16330 X 125% = 20412

**REMAINING LOADS**  
 A 21860  
 B 10632  
 C 14840  
 M 31844  
 TOTAL 79076 X 100% = 79076

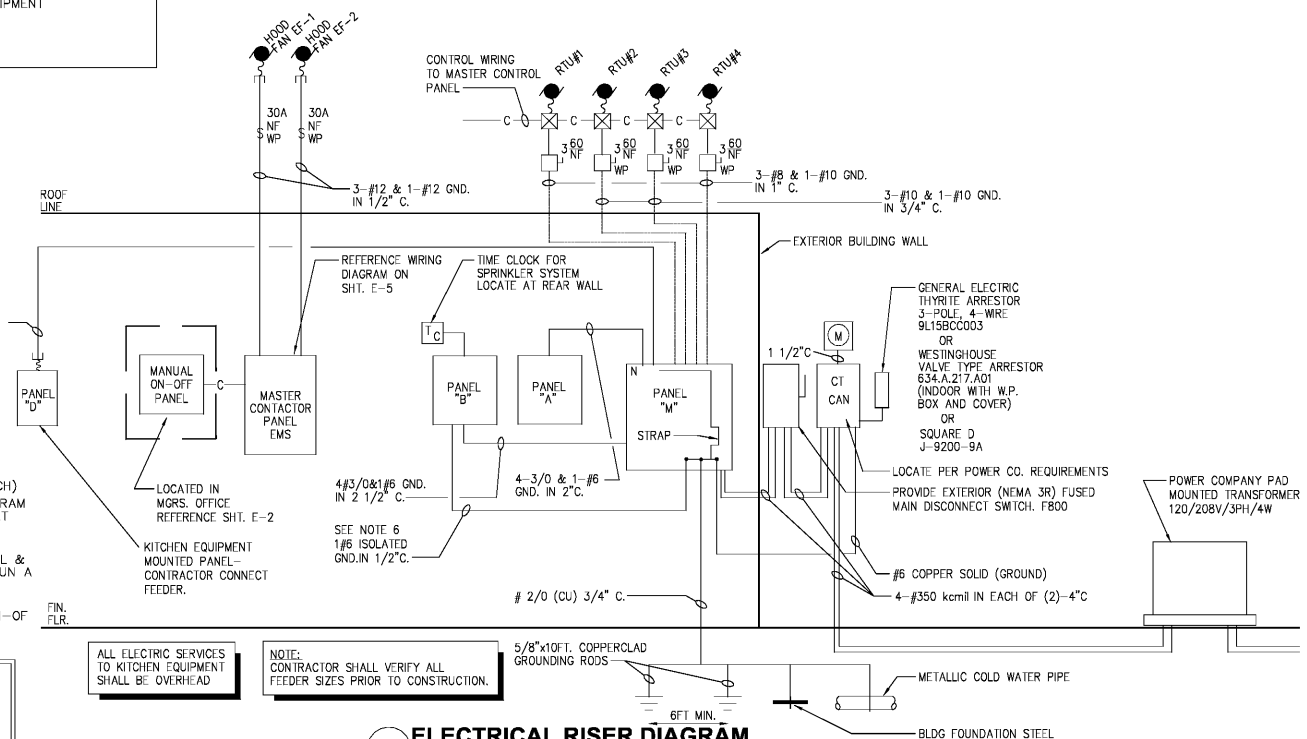
**TOTAL ADJUSTED LOAD = 148,993 (414A)**



MANUAL RESET RELAY WIRING SCHEMATIC  
**AMEREX AUTOMATIC FIRE CONTROL SYSTEM**  
 SCALE: NONE



**TELEPHONE RISER DIAGRAM**  
 SCALE: NONE



- RISER NOTES:**
- ALL FUSED DISCONNECT SWITCHES TO BE PROVIDED BY CONTRACTOR.
  - REFER TO PANEL NOTES.
  - REFER TO GENERAL NOTES, SHEET E-2
  - "T.C." INDICATES TIME CLOCK (OR TIME SWITCH)
  - SEE MASTER CONTACTOR PANEL WIRING DIAGRAM FOR ADDITIONAL CIRCUITS FROM PANELS THAT ARE CONTROLLED THROUGH THE MASTER CONTACTOR PANEL.
  - PROVIDE AN ISOLATED GROUND BUS IN PANEL & RUN CIRCUIT GROUND WIRE TO THIS BUS. RUN A #6 GREEN GROUND FROM THIS BUS TO MAIN SERVICE GROUND POINT.
  - MASTER CONTACTOR PANEL AND MANUAL ON-OFF PANEL TO BE INCLUDED IN ELECTRICAL CONTRACTORS SCOPE OF WORK.

ELECTRICAL DISTRIBUTION PANELS, MASTER CONTACTOR PANEL AND MANUAL ON/OFF PANEL MAY BE PURCHASED AS A LOOSE GEAR PACKAGE THROUGH:  
**SUNCOAST ENVIRONMENTAL CONTROLS, INC.**  
 8565 151ST AVENUE NORTH  
 LARGO, FLORIDA 34643  
 PHONE (877) 544-6679

**ELECTRICAL RISER DIAGRAM**  
 SCALE: NONE

PREMIER KING'S, INC.  
 5529 CARMICHAEL ROAD  
 MONTGOMERY, ALABAMA 36117  
 PHONE: (205) 825-1722  
 FAX: (205) 825-1722  
 WWW.KINGSPANELS.COM

2126 Morris Avenue  
 Birmingham, AL 35203  
 Phone: (205) 325-7551  
 Fax: (205) 325-7722  
 www.hpluhba.com

**hendon huckestein architects, PC**  
 architecture • planning • interior design

Professional Engineer  
 No. 17960  
 Elizabeth Hyde

PROJECT #18026.02  
 RGC-60 TALL 20/20 IMAGE: NOVEMBER 2018 DESIGN RELEASE  
**BURGER KING RESTAURANT**  
 STREET ADDRESS: HARPERSVILLE, AL  
 ELECTRICAL PANELS AND RISERS