

OVERVIEW

TYPICALLY THE EXHAUST HOOD KIT PROVIDED BY FRANKIE FOODSERVICE SYSTEMS WILL INCLUDE THE FOLLOWING:

1. HOOD AND ACCESSORIES
2. METAL FAB UL LISTED GREASE EXHAUST DUCT
3. LOREN COOK FAN/ROOF CURB
4. AMEREX FIRE SYSTEM

THE SHIPMENT FROM FRANKIE FOODSERVICE SYSTEMS WILL INCLUDE THE FOLLOWING:

1. HOOD
2. UTILITY CHASE
3. WALL FLASHING
4. FACED PANELS
5. CASCADE GREASE FILTERS
6. METAL FAB GREASE EXHAUST DUCT

THE LOREN COOK EXHAUST FAN AND ROOF CURB IS DROPPED SHIPPED FROM THEIR FACTORY.

FIRE SUPPRESSION SYSTEM

THE HOOD IS FACTORY PRE-PIPED FOR AN AMEREX FIRE SUPPRESSION SYSTEM. THE HOOD KIT FROM FRANKIE FOODSERVICE SYSTEMS INCLUDES COMPLETE INSTALLATION OF THE FIRE SUPPRESSION SYSTEM INCLUDING ALL PLANS, PERMITS, CHECK OUT AND CERTIFICATION. THE LOCAL AMEREX REPRESENTATIVE WILL BRING ALL THE SYSTEM COMPONENTS AT THE TIME OF INSTALLATION.

AS AN OPTION, THE HOODS MAY BE PRE-PIPED FOR ANSUL FIRE SUPPRESSION SYSTEM.

CONTACT INFORMATION

ANSUL INSTALLATION QUESTIONS

ANSUL, INC., MINNETTE, WI
OFFICE PHONE: 1-800-882-8786

CONTACT INFORMATION

SHIPPING INFORMATION

FOR ALL FRANKIE HOOD PARTS - MARA ALOD
FRANKIE FOODSERVICE SYSTEMS, INC.
800 AVIATION PARKWAY
SMYRNA, TN 37187
+1-615-462-4000

HOOD INSTALLATION QUESTIONS

FRANKIE FOODSERVICE SYSTEMS, INC. TECHNICAL SUPPORT
PHONE - 1-800-837-2853 OPTION 2
PHONE - 1-615-462-5471
E-MAIL - FS-TS.US@FRANKIE.COM

AMEREX INSTALLATION QUESTIONS

THE HOOD IS FACTORY PRE-PIPED FOR AN AMEREX FIRE SUPPRESSION SYSTEM. THE LOCAL AMEREX REPRESENTATIVE WILL MAKE CONTACT WITH THE GENERAL CONTRACTOR TO SET UP THE INSTALLATION SCHEDULE. IF YOU HAVE NOT HEARD FROM THE DISTRIBUTOR, CONTACT:

KAREN MAH
AMEREX CORPORATION, TRUSSVILLE, AL
1-205-655-8730

LOREN COOK FAN INSTALLATION

IF THERE ARE QUESTIONS OR ISSUES WITH THE LOREN COOK FAN INSTALLATION CONTACT:

DAVID RAY
LOREN COOK COMPANY, SPRINGFIELD, MO
1-417-899-8474

METAL-FAB DUCT INSTALLATION

IF THERE ARE QUESTIONS OR ISSUES WITH THE METAL-FAB DUCT INSTALLATION CONTACT:

METAL FAB, INC. WICHITA, KS
COMMERCIAL SERVICE COMMERCIAL VENT PRODUCTS
1-800-835-2830

BROILER HOOD LISTING AND APPROVAL REFERENCE



INTERTEK TESTING SERVICES, INC.

BROILER HOOD IS ETL LISTED EXHAUST HOODS WITHOUT EXHAUST DAMPERS, REPORT NO. 3118208, TESTED UNDER IN ACCORDANCE WITH UNDERWRITERS LABORATORIES STANDARDS UL710 AND ULCS44E.



NATIONAL FIRE PROTECTION ASSOCIATION

COMBINATION BROILER/OVEN HOOD MEETS ALL REQUIREMENTS OF NFPA-96 "STANDARD FOR VENTILATION CONTROL AND FIRE PROTECTION OF COMMERCIAL COOKING OPERATIONS"



NATIONAL SANITATION FOUNDATION

MEETS ALL REQUIREMENTS OF NSF STANDARD NUMBER 2 "FOOD SERVICE EQUIPMENT"

MECHANICAL CODES

MEETS ALL REQUIREMENTS OF THE UMC, BOCA, SECCI AND IBC.

DRAWING INFORMATION		
DATE	DESCRIPTION	BY
01-07-19	FOR CONSTRUCTION	KM

N-C-A
CONSULTANTS / GROUP
4585 140TH AVE. NORTH, SUITE #1001
CLEARWATER, FLORIDA
PHONE: (877) 530-0078
CALL NCA MARKETING FOR PRICING
NCA JOB# 19-107

NO.	DATE	REVISION



PREMIER KINGS, INC.
5529 CARMICHAEL ROAD
MONTOMOERY, ALABAMA 36117
PHONE: 205-271-7778
FAX: 205-271-7778
WWW.HALJHA.COM
LINDSEY@HALJHA.COM

21754 North Avenue
Birmingham, AL 35203
Phone (205) 322-1751
Fax (205) 322-1778
email: info@haljha.com
www.haljha.com

hendon huckestein architects, PC
architecture • planning • interior design



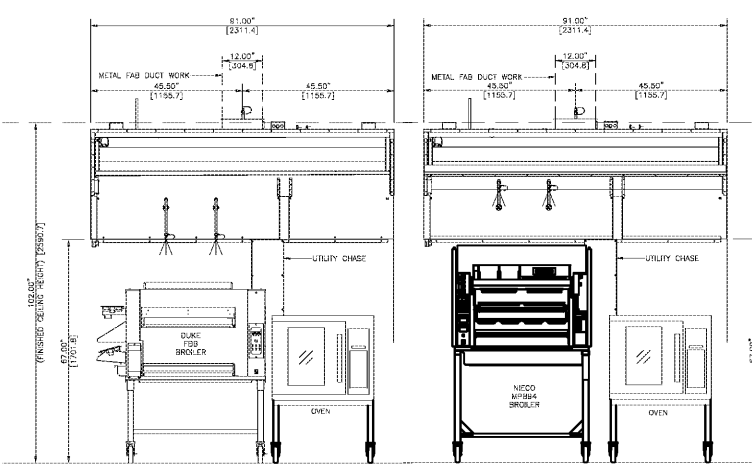
PROJECT # 18026.02
RCC-60 FALL 20/20 MAGE NOVEMBER 2018 DESIGN RELEASE
BURGER KING RESTAURANT
STREET ADDRESS
HARPERSVILLE, AL

1 GENERAL NOTES FOR INSTALLATION CREWS
SCALE: NO SCALE

2 APPROVALS
SCALE: NO SCALE

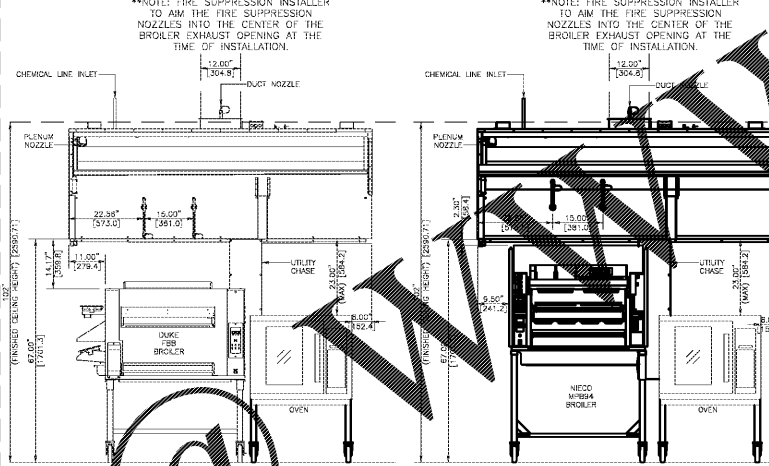
3 SPECIFICATIONS
SCALE: NO SCALE

4 UTILITY DETAILS
SCALE: NO SCALE



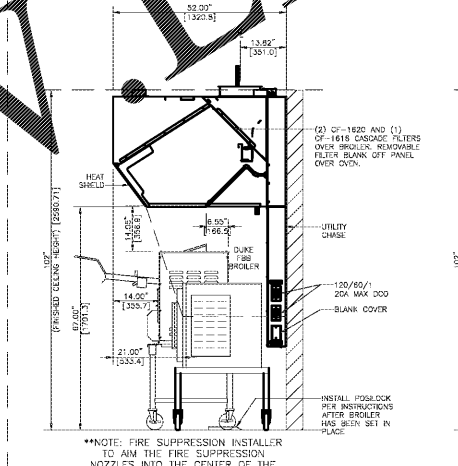
5 HOOD FRONT ELEVATION WITH DUKE BROILER

6 HOOD FRONT ELEVATION WITH NICO BROILER

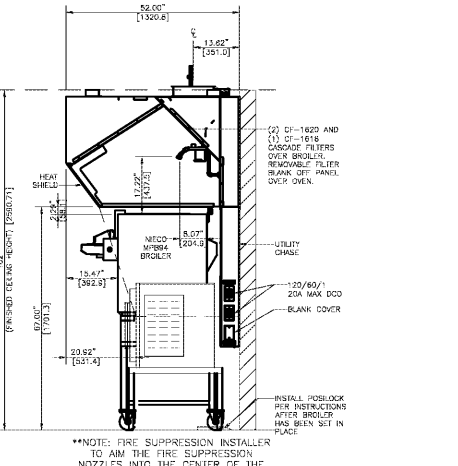


7 FRONT ELEVATION FIRE SUPPRESSION DETAIL - DUKE

8 FRONT ELEVATION FIRE SUPPRESSION DETAIL - NICO



9 SECTION VIEW - DUKE BROILER

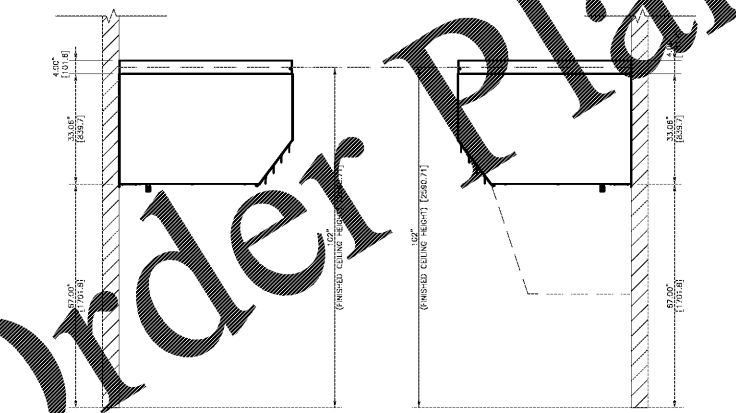


10 SECTION VIEW - NICO BROILER

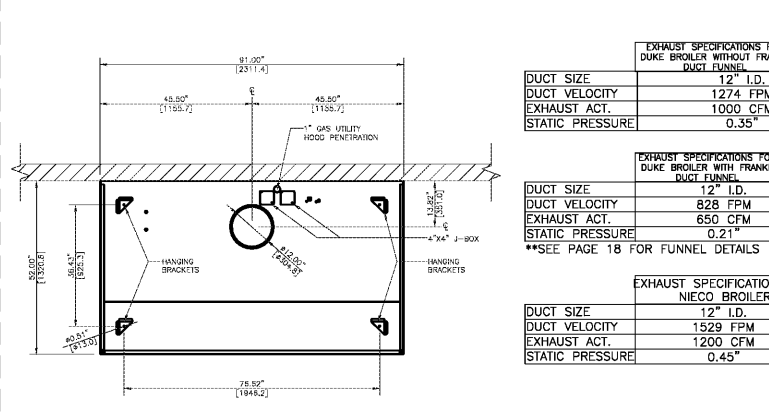
11 FRONT ELEVATIONS
SCALE: NO SCALE

12 FRONT ELEVATION FIRE SUPPRESSION DETAILS
SCALE: NO SCALE

13 SECTION VIEWS
SCALE: NO SCALE



14 RIGHT AND LEFT END VIEWS
SCALE: NO SCALE

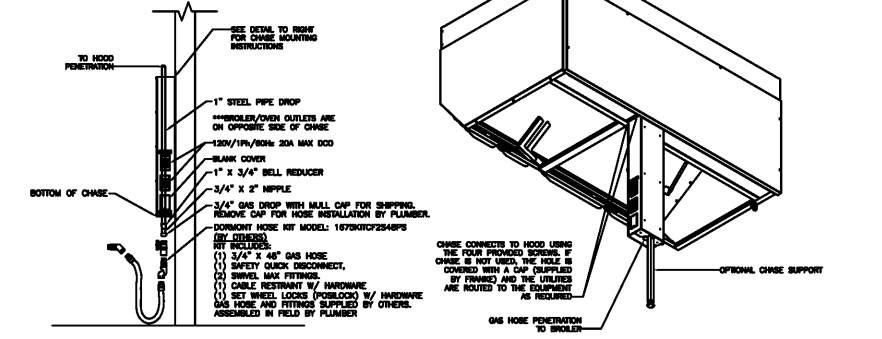


15 PLAN VIEW
SCALE: NO SCALE

EXHAUST SPECIFICATIONS FOR DUKE BROILER WITHOUT FRANKIE DUCT FUNNEL	
DUCT SIZE	12" I.D.
DUCT VELOCITY	1274 FPM
EXHAUST ACT.	1000 CFM
STATIC PRESSURE	0.35"

EXHAUST SPECIFICATIONS FOR DUKE BROILER WITH FRANKIE DUCT FUNNEL	
DUCT SIZE	12" I.D.
DUCT VELOCITY	828 FPM
EXHAUST ACT.	650 CFM
STATIC PRESSURE	0.21"

EXHAUST SPECIFICATIONS FOR NICO BROILER	
DUCT SIZE	12" I.D.
DUCT VELOCITY	1529 FPM
EXHAUST ACT.	1200 CFM
STATIC PRESSURE	0.45"



16 TYPICAL GAS AND ELECTRICAL CHASE DETAILS
SCALE: NO SCALE

© Copyright 2018- Drawings, specifications, notes, database, computer files, field data, and reports as instruments of service prepared by the Design of Record. As instruments of services, these items remain the property of the Design of Record, who shall retain all statutory and other reserved rights, including the copyright thereto. Any use, reproduction or changes to these documents without written consent of NCA Consultants is a violation of federal copyright laws.

Order Plans @