

GENERAL ROOFING NOTES:

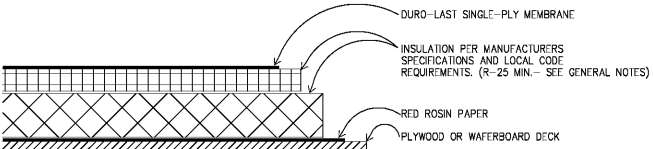
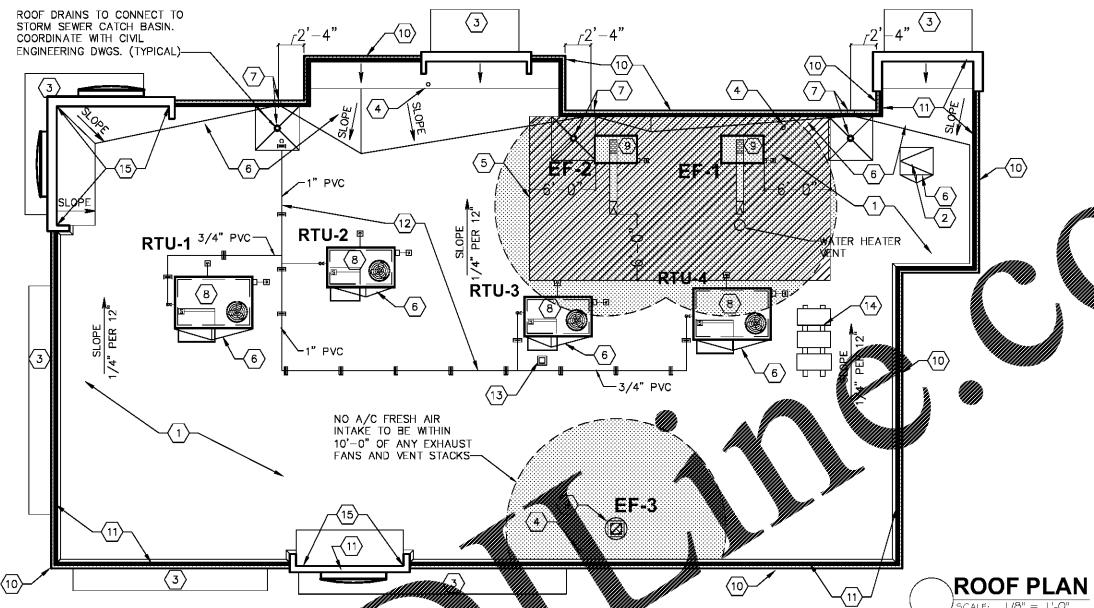
- THIS ROOF SYSTEM TO BE DURA-LAST 40 MIL MIN. MEMBRANE IN CONFORMANCE. INSULATION VALUE TO BE R-25 (MIN.) CONT. POLYISIO ABOVE THE ROOF DECKING.
- ROOFING SUBCONTRACTOR TO COORDINATE LOCATION OF H.V.A.C. UNITS AND ROOF TOP ACCESSORIES WITH STRUCTURAL, MECHANICAL AND ELECTRICAL DRAWINGS FOR PLACEMENT AND TAPERED RIGID INSULATION BOARD LAY-OUT AND SUBSEQUENT INSTALLATION IN ORDER TO AVOID PONDING WATER CONDITIONS ATTRIBUTABLE TO BOARD LAY-OUT ISSUES.
- ROOF SYSTEMS SPECIFIED SHALL BE APPLIED ONLY BY MANUFACTURER APPROVED APPLICATOR IN ORDER TO MEET GUARANTEE REQUIREMENTS.
- COORDINATE LOCATION OF MECHANICAL UNITS WITH STRUCTURAL AND MECHANICAL DRAWINGS.
- HVAC CONDENSATE LINES TO TERMINATE AT ROOF DRAIN OR AS REQUIRED BY LOCAL CODE.
- REFER TO STRUCTURAL AND M-E-P DRAWINGS FOR ADDITIONAL INFORMATION.
- ALL CURBS AND PIPE PENETRATIONS SHALL HAVE A MINIMUM OF 16" CLEAR FROM EACH OTHER FOR ROOF FLASHING PURPOSES. ALL EQUIPMENT SHALL HAVE A MINIMUM OF 16" CLEAR FROM ALL ADJACENT PARAPETS. ALL HVAC MOUNTED EQUIPMENT (DISCONNECT BOXES, GFCI, PIPE SUPPORTS) SHALL NOT BE CLOSER THAN 16" FROM EACH OTHER OR CURB. NO UNISTRUT PIPE SUPPORTS SHALL BE USED AS VERTICAL MEMBERS FOR MOUNTING EQUIPMENT TO ROOF SURFACE.
- PONDING WATER IS DEFINED AS WATER THAT DOES NOT DRAIN OR DISSIPATE FROM THE ROOF WITHIN 48 HOURS AFTER PRECIPITATION.
- CONTRACTOR SHALL "SUGAR-IN" ALL ASPHALT, BLEED-OUT ON PILES WITH ADDITIONAL GRANULES TO MATCH EXISTING COLORATION OF THE MINERAL SURFACE CAP SHEET.
- ALL FLASHING CEMENTS, ASPHALTS, PRODUCTS AND ACCESSORIES SHALL BE APPROVED BY ROOFING MANUFACTURER WITH THE MANUFACTURER'S BRAND. ALL ASPHALTS SHALL BE AMERICAN MANUFACTURED PRODUCTS.

KEYED NOTES:

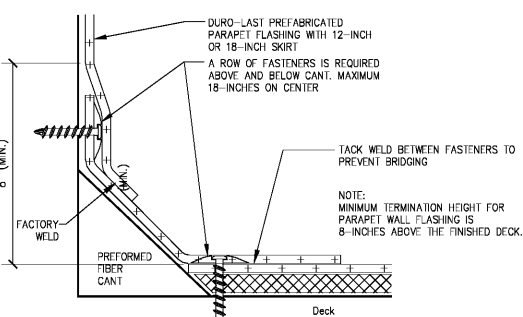
- SINGLE-PLY DURA-LAST WHITE MEMBRANE ROOF.
- ROOF ACCESS SCUTTLE, REFERENCE DETAIL, THIS SHEET.
- PREFABRICATED METAL CANOPY, REFERENCE SHEETS A-7, A-8.
- VENT THROUGH ROOF - PROVIDE PREFABRICATED DURA-LAST VENT FLASHING FOR ALL VENTS AND PIPE PENETRATIONS, REFERENCE DETAIL #6, THIS SHEET.
- INSTALL MODIFIED BITUMEN SACRIFICE SHEET AS SPECIFIED AT KITCHEN EXHAUST.
- ROOF CRICKET WITH SLOPE TO MATCH ROOF, REFER TO DETAIL #3, THIS SHEET.
- ROOF DRAIN AND OVERFLOW ROOF SCUPPERS - REFER TO DETAILS #4 AND #7 THIS SHEET.
- ROOFTOP AIR CONDITIONING UNIT - REFER TO MECHANICAL PLANS.
- EXHAUST FAN - REFER TO MECHANICAL PLANS.
- ILLUMINATED PARAPET LIGHT BAND.
- METAL COPING.
- PVC CONDENSATE DRAIN (SIZE AS SHOWN) WITH PIPE SUPPORTS EVERY 5'-0". TERMINATE CONDENSATE DRAIN AT PRIMARY SCUPPER. REFER TO DETAIL #8, THIS SHEET FOR ADDITIONAL INFORMATION.
- PROVIDE PITCH PAN WITH CONDUIT OVER OFFICE FOR SATELLITE DISH/ANTENNA.
- EQUIPMENT STAND FOR WALK-IN BOX COOLER/FREEZER CONDENSERS AND ICE MACHINE CONDENSER. REFER TO EQUIPMENT STAND DETAIL, THIS SHEET.
- LOCATION OF TOWER MOUNTED FLAG-POLE - SEE DETAIL A-9 - GC TO PROVIDE.

GENERAL NOTES:

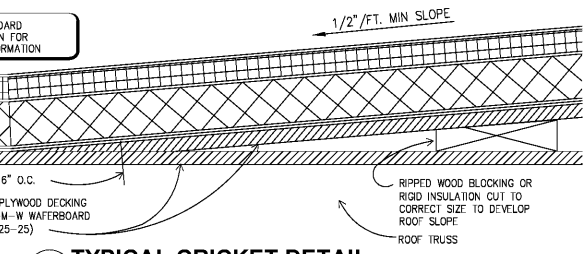
- THE ROOF STRUCTURE SHALL NOT BE USED FOR STOCKING OF EQUIPMENT OR MATERIALS UNLESS APPROVED BY THE ARCHITECT, STRUCTURAL ENGINEER AND THE JOIST MANUFACTURER.
- THE ROOFING SYSTEM SHALL BE AS PER DRAWINGS AND PER MANUFACTURER'S SPECIFICATIONS.
- COORDINATE ROOF ELEVATIONS WITH STRUCTURAL DRAWINGS, INCLUDING GUARANTEES, CURBS, FLASHING, ETC.



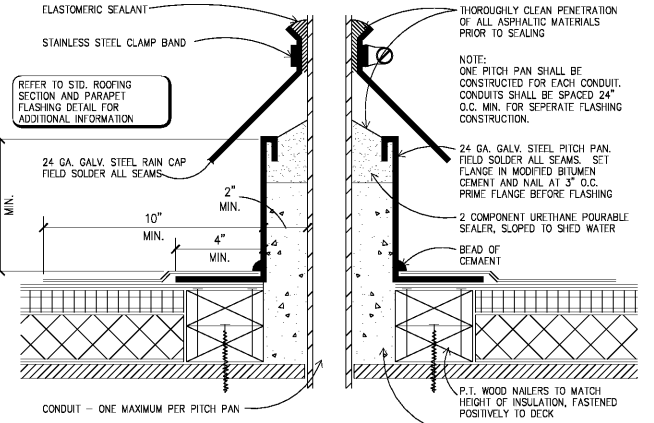
1 STANDARD ROOFING SECTION
SCALE: 3" = 1'-0"



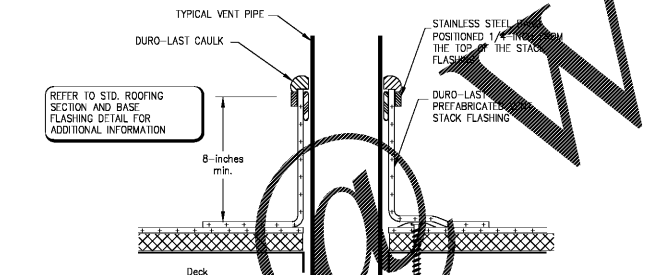
2 STANDARD BASE FLASHING CONFIGURATION
SCALE: 3" = 1'-0"



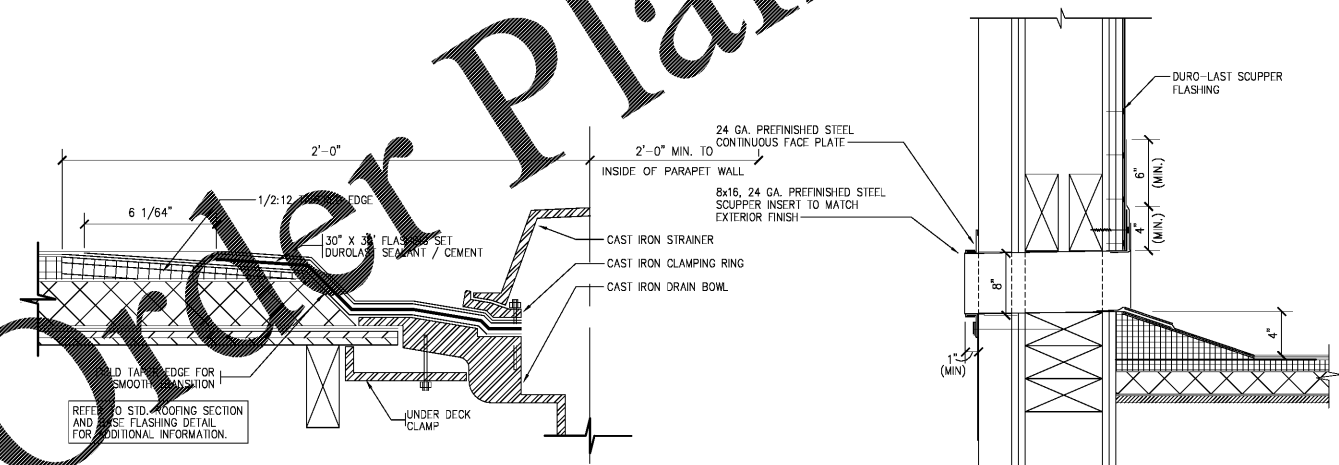
3 TYPICAL CRICKET DETAIL
SCALE: 3" = 1'-0"



5 PITCH PAN DETAIL
SCALE: 3" = 1'-0"

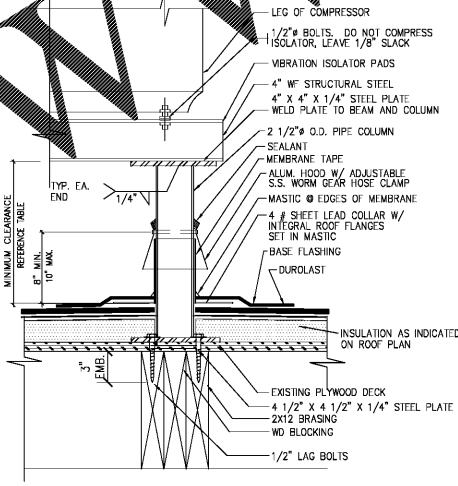


6 SOIL PIPE FLASHING DETAIL
SCALE: 3" = 1'-0"



4 ROOF DRAIN DETAIL
SCALE: 3" = 1'-0"

7 OVERFLOW SCUPPER DETAIL
SCALE: 3" = 1'-0"

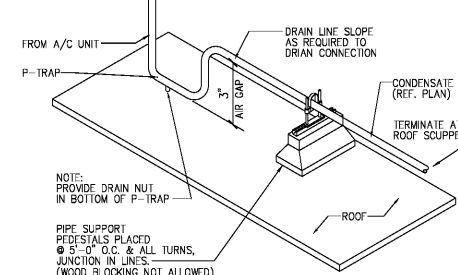


9 EQUIPMENT STAND DETAIL
SCALE: NONE

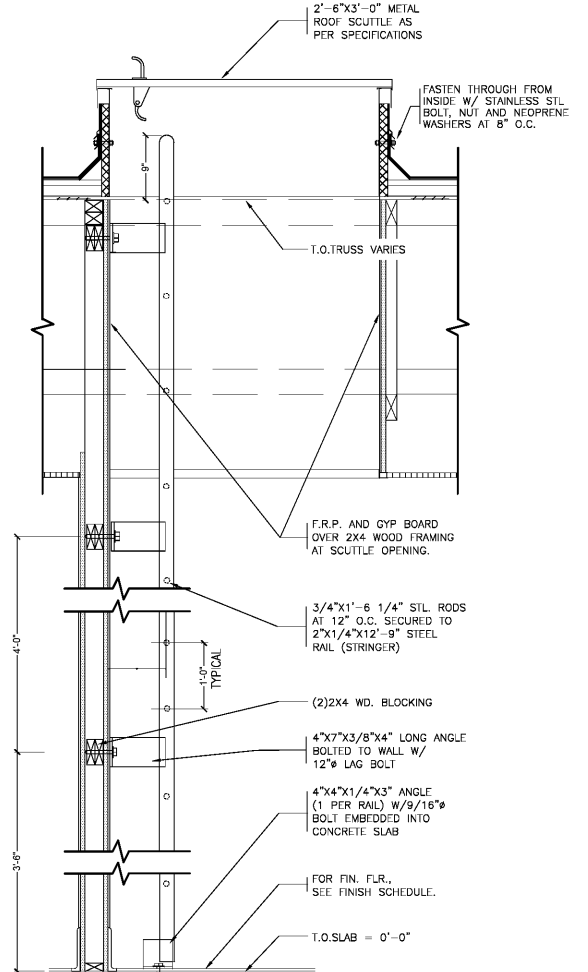
VERIFY W/ EQUIPMENT SUPPLIER IF IN CONTRACT.

CLEARANCE BELOW RAISED ROOF MOUNTED MECHANICAL UNITS (INCHES)

WIDTH OF UNIT	MINIMUM CLEARANCE ABOVE ROOF SURFACE
< 24	14
24 < 36	18
36 < 48	24
48 < 60	30
> 60	48



8 CONDENSATE LINE SUPPORT DETAIL
SCALE: NONE



10 ROOF SCUTTLE DETAIL
SCALE: 3/4" = 1'-0"

NOTE
ALL ROOFING DETAILS TO BE VERIFIED AND COORDINATED WITH MANUFACTURER'S SPECIFICATIONS AND WARRANTIES.

Order Plans @ WWW.DIline.com

PREMIER KINGS, INC.
5529 CARMICHAEL ROAD
MONTGOMERY, ALABAMA 36117
P-O-BOX 10000
LINES@BKALABAMA.COM

2126 Morris Avenue
Birmingham, AL 35203
Phone: (205) 329-7551
Fax: (205) 329-7552
www.hpluhba.com

hendon huckestein architects, PC
architecture • planning • interior design

STATE OF ALABAMA
4152
BIRMINGHAM, ALABAMA
REGISTERED ARCHITECT
BILLY N. HENDON

PROJECT # 18026.02
RCC-60 TALL 20/20 IMAGE: NOVEMBER 2018 DESIGN RELEASE
BURGER KING RESTAURANT
CORNER OF US280 & BURNS LANE
HARTSVILLE, AL

NO. DATE 01.31.19
DRAWN BY: MWW
CHECKED BY: LKAW
REVISION
RELEASED FOR CONSTRUCTION

01.31.19

ROOF PLAN AND DETAILS

A-5