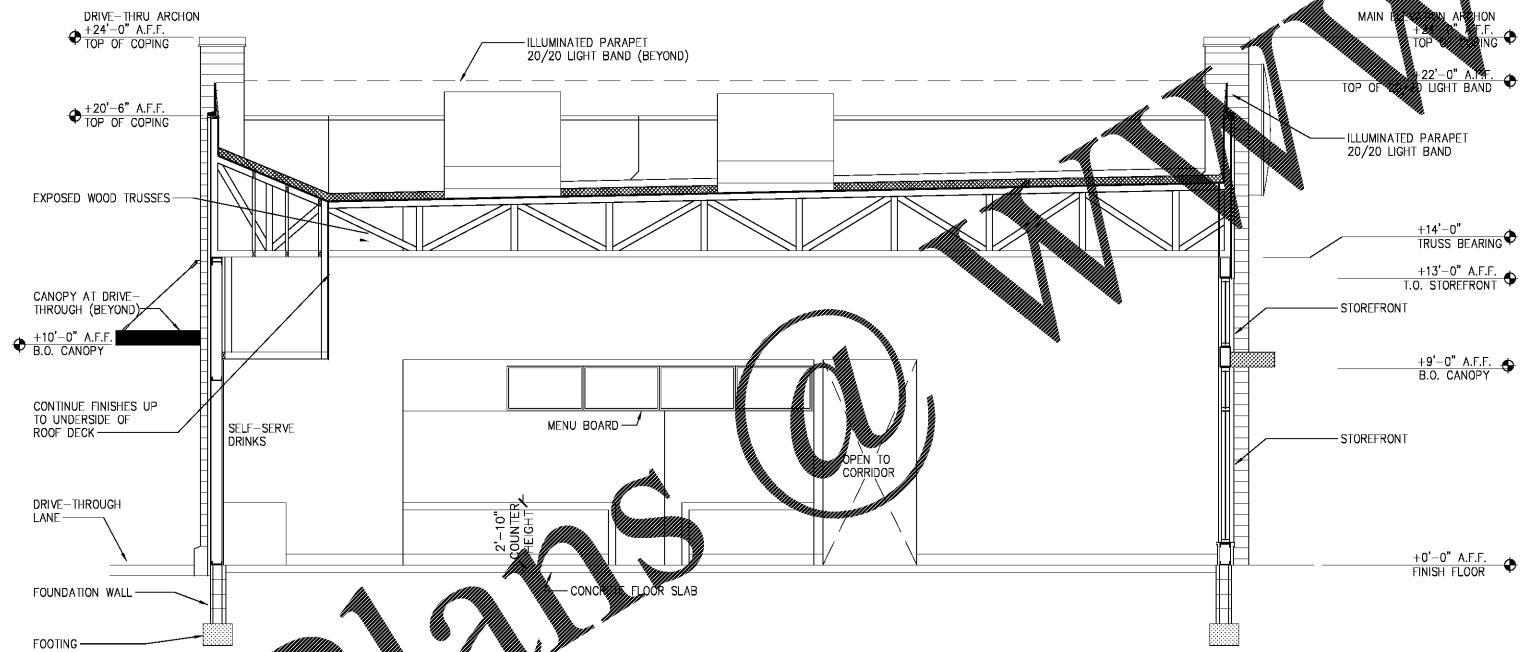


**1 BUILDING SECTION**  
 SCALE: 1/4" = 1'-0"  
 EXTERIOR/INTERIOR FINISHES NOT SHOWN



**2 BUILDING SECTION**  
 SCALE: 1/4" = 1'-0"  
 EXTERIOR/INTERIOR FINISHES NOT SHOWN

Order Plans

WWW.LDILINE.COM

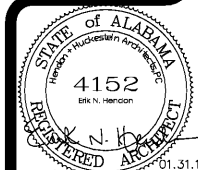
NO.	DATE	DRAWN BY	CHECKED BY	SCALE	REVISION
	01.31.19	B:MRW	B:MRW		RELEASED FOR CONSTRUCTION

**BURGER KING**

PREMIER KINGS, INC.  
 5529 CAMMACHAEL ROAD  
 MONTGOMERY, ALABAMA 36117  
 P:ONE (205) 833-1111  
 LINES: (800) 444-2244

2126 Montic Avenue  
 Birmingham, AL 35203  
 Phone: (205) 329-1751  
 Fax: (205) 329-1751  
 www.hendonhuckestein.com

**hendon huckestein architects, PC**  
 architecture • planning • interior design



PROJECT # 18026.02  
 R00-60 TALL 20/20 IMAGE NOVEMBER 2018 DESIGN RELEASE  
**BURGER KING RESTAURANT**  
 CORNER OF US280 & BURNS LANE  
 HARTERSVILLE, AL