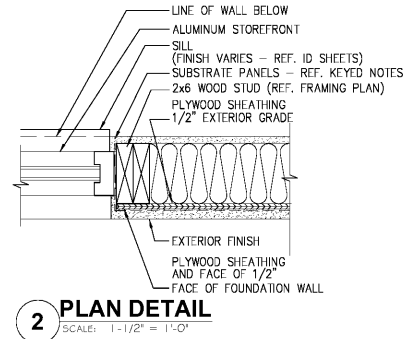
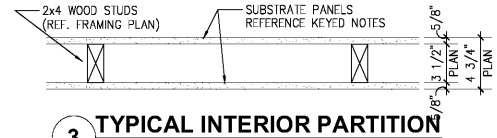


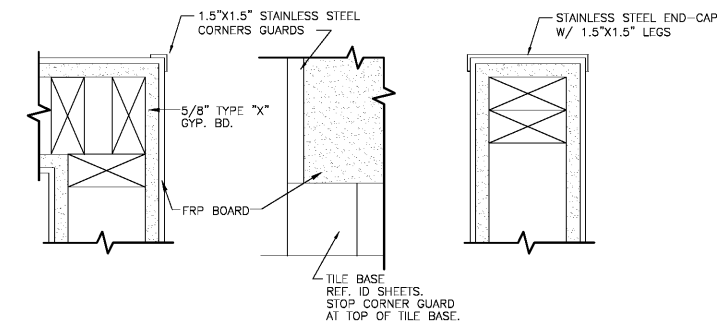
1 PLAN DETAIL
SCALE: 1-1/2" = 1'-0"



2 PLAN DETAIL
SCALE: 1-1/2" = 1'-0"

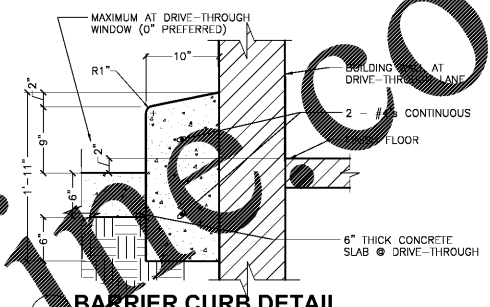


3 TYPICAL INTERIOR PARTITION
SCALE: 1-1/2" = 1'-0"

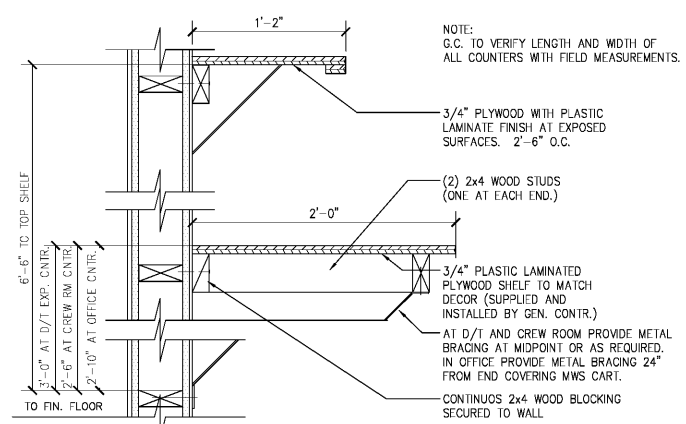


CORNER PLAN ELEVATION END-CAP PLAN

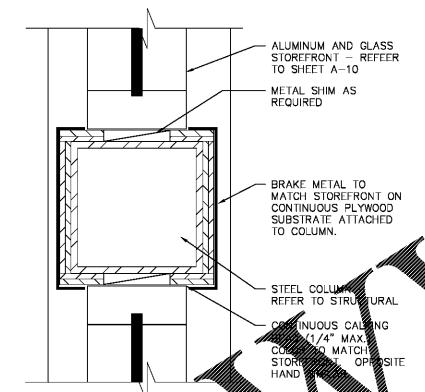
4 CORNER GUARD & END-CAP DETAILS
SCALE: 1-1/2" = 1'-0"



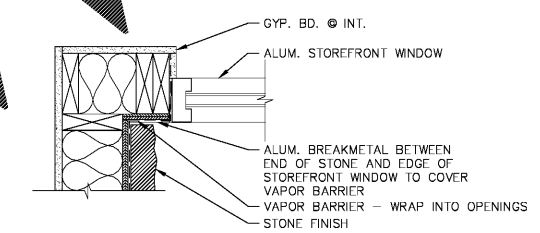
5 BARRIER CURB DETAIL
SCALE: 1\"/>



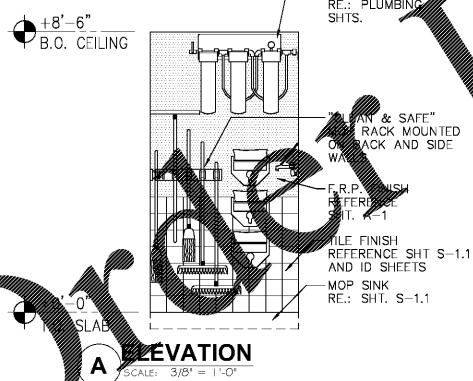
6 OFFICE COUNTER DETAIL
SCALE: 1-1/2" = 1'-0"



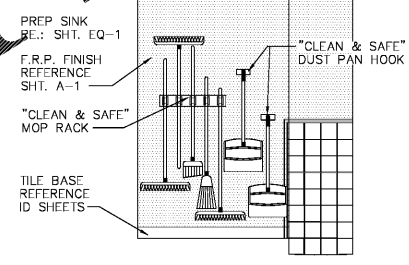
7 COLUMN BRAKE METAL ENCLOSURE
SCALE: 3\"/>



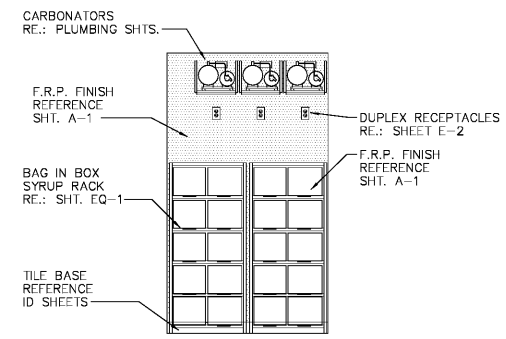
8 PLAN DETAIL @ ENTRY DOOR
SCALE: 1-1/2" = 1'-0"



A ELEVATION
SCALE: 3/8\"/>



B ELEVATION
SCALE: 3/8\"/>



C ELEVATION
SCALE: 3/8\"/>

Order Plans

NO.	DATE	BY	CHECKED	SCALE
01.31.19				



PREMIER KINGS, INC.
5529 CARMICHAEL ROAD
MONTGOMERY, ALABAMA 36117
P-O-BOX 10000
LINSEY@BKBALABAMA.COM

2126 Morris Avenue
Birmingham, AL 35203
Phone: (205) 329-1751
Fax: (205) 329-1752
www.hendonschuckestein.com

hendonschuckestein
architects, PC
architecture • planning • interior design



PROJECT # 18026.02
RCC-60 TALL 20/20 IMAGE: NOVEMBER 2018 DESIGN RELEASE
BURGER KING RESTAURANT
CORNER OF US280 & BURNS LANE
HARTERSVILLE, AL
MISCELLANEOUS DETAILS