

CHECKED BY: BSB
 REVISION

NO.	DATE



PREMIER KINGS, INC.
 5529 CARMICHAEL ROAD
 MONTGOMERY, ALABAMA 36117
 PHONE: (205) 836-1111
 LINES@BKALABAMA.COM

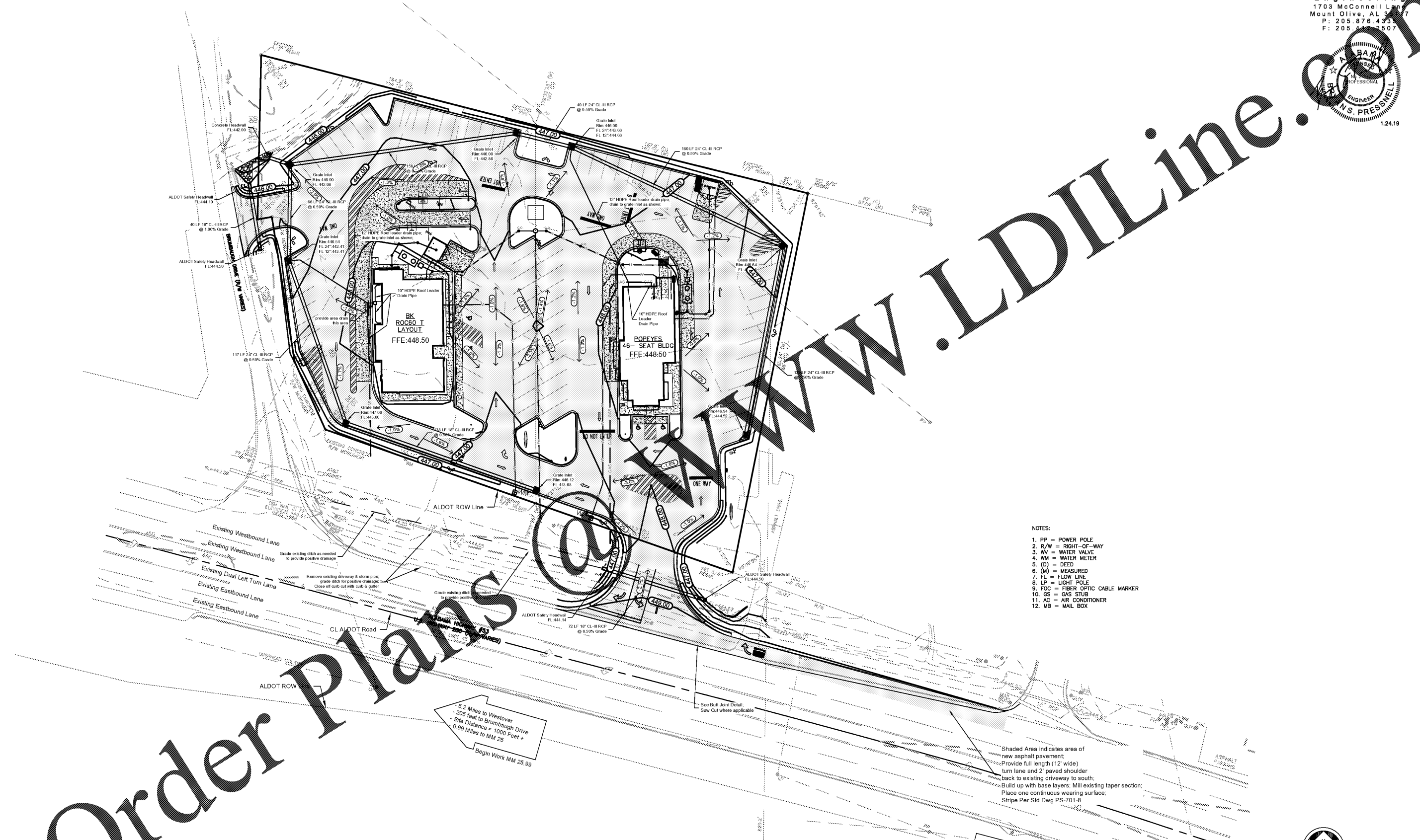
2126 Morris Avenue
 Birmingham, AL 35203
 Phone (205) 322-1751
 Fax (205) 322-1778
 Email info@hplusha.com
 www.hplusha.com



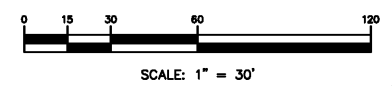
Drainage Plan

PROJECT #: 18026.02
 PROJECT TALL 02/20/18 MAKE NOVEMBER 2018 DESIGN RELEASE
BURGER KING RESTAURANT
 STREET ADDRESS
 HARPERVILLE, AL

C-4.0



- NOTES:
1. PP = POWER POLE
 2. R/W = RIGHT-OF-WAY
 3. WV = WATER VALVE
 4. WM = WATER METER
 5. (D) = DEED
 6. (M) = MEASURED
 7. FL = FLOW LINE
 8. LP = LIGHT POLE
 9. FOC = FIBER OPTIC CABLE MARKER
 10. GS = GAS STUB
 11. AC = AIR CONDITIONER
 12. MB = MAIL BOX



UTILITY STATEMENT
 THE EXISTING UNDERGROUND UTILITIES SHOWN ARE BASED ON PLANS OBTAINED FROM THE RESPECTIVE UTILITY COMPANIES. THIS ENGINEER/SURVEYOR MAKES NO GUARANTEE THE UNDERGROUND UTILITIES SHOWN COMPRISE ALL SUCH UTILITIES IN THE AREA. EITHER IN SERVICE OR NOT. THE ENGINEER/SURVEYOR FURTHER DOES NOT WARRANT THAT THE UNDERGROUND UTILITIES SHOWN ARE IN THE EXACT LOCATION INDICATED. THE SURVEYOR HAS NOT PHYSICALLY LOCATED THE UNDERGROUND UTILITIES. THE CONTRACTOR SHALL LOCATE ALL UTILITIES IN THE AREA PRIOR TO CONSTRUCTION. THIS LOCATION SHALL INCLUDE NOTIFYING ALL UTILITY COMPANIES AND ALABAMA ONE CALL AT 1-800-292-8525. THIS MAY ALSO REQUIRE EXPLORATORY HAND EXCAVATION TO DETERMINE THE EXACT LOCATION OF THE UTILITIES.

Order Plans

www.LDILine.com