

WILSON AIR CENTER
NORTH TERMINAL

2923 South Tryon Street Suite 280
Charlotte, North Carolina 28203
Tel 704.373.0069
MECHANICAL ELECTRICAL PLUMBING
DEC 7, 2016
FORM NUMBER = C-2130



ARCHITECT
THE WILSON GROUP
P O BOX 5510
CHARLOTTE, NC 28206
(704) 351-9747

CIVIL ENGINEER
TALBERT, BRIGHT & ELLINGTON
3025 WHITEHALL PARK DRIVE, SUITE 210
CHARLOTTE, NC 28273
(704) 426-8070 FIRM NO. C-1163

STRUCTURAL ENGINEER
STEWART
101 N. TRYON ST., SUITE 1400
CHARLOTTE, NC 28202
(704) 909-3523 FIRM NO. C-1051

MECHANICAL, ELECTRICAL, PLUMBING & FIRE PROTECTION ENGINEER
SABER ENGINEERING
2923 S. TRYON ST., SUITE 280
CHARLOTTE, NC 28203
(704) 373-0069 FIRM NO. C-2130

LANDSCAPE ARCHITECT
URBAN DESIGN PARTNERS
1318-66 CENTRAL AVENUE
CHARLOTTE, NC 28205
(704) 334-3333 FIRM NO. C-1180

COMMUNICATIONS INFRASTRUCTURE
DB CONSULTING
246 LOVES FARM ROAD
BLACKSBURG, SC 29702
(704) 497-7228 FIRM NO. C-1180

REVISIONS

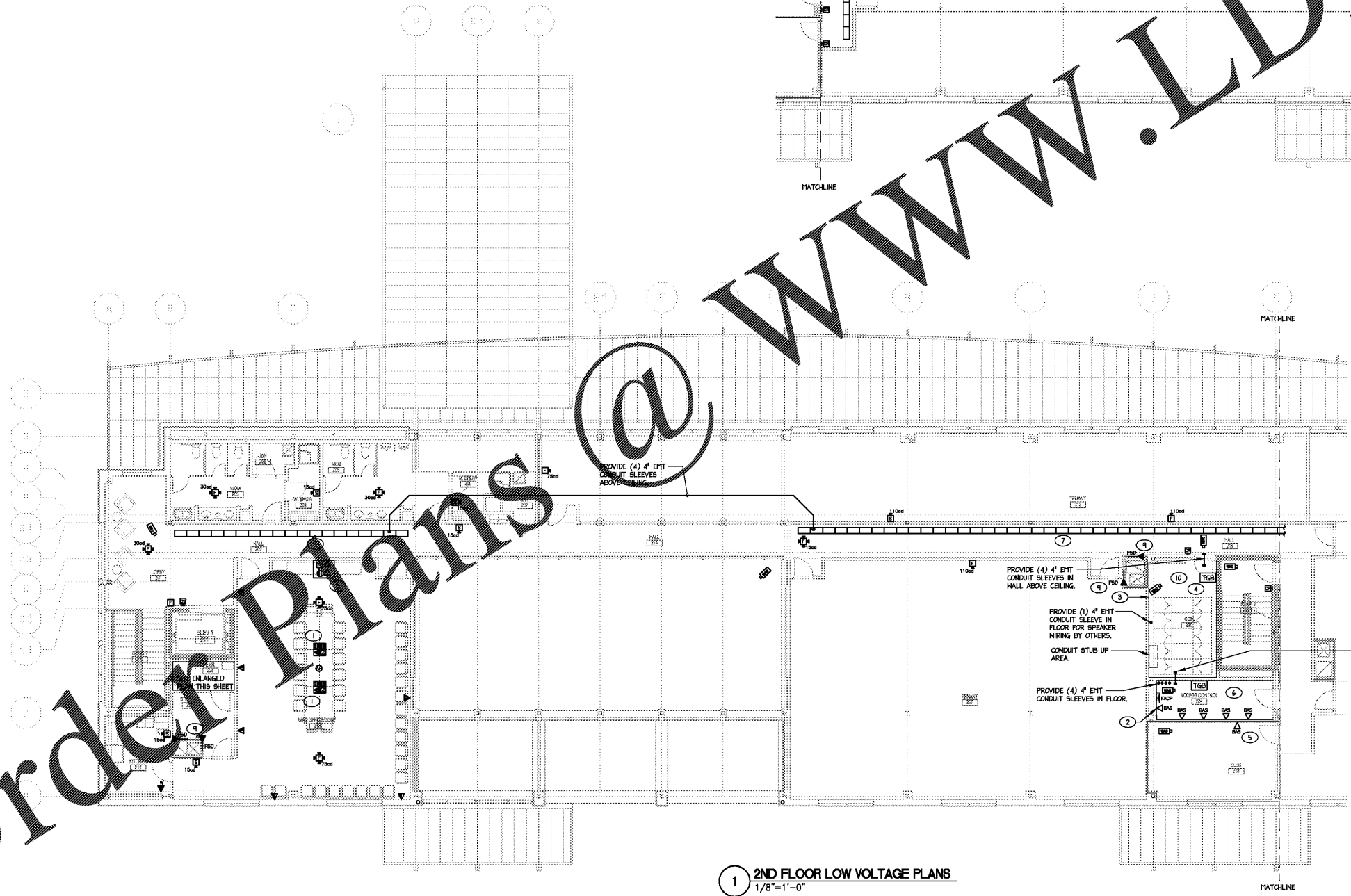
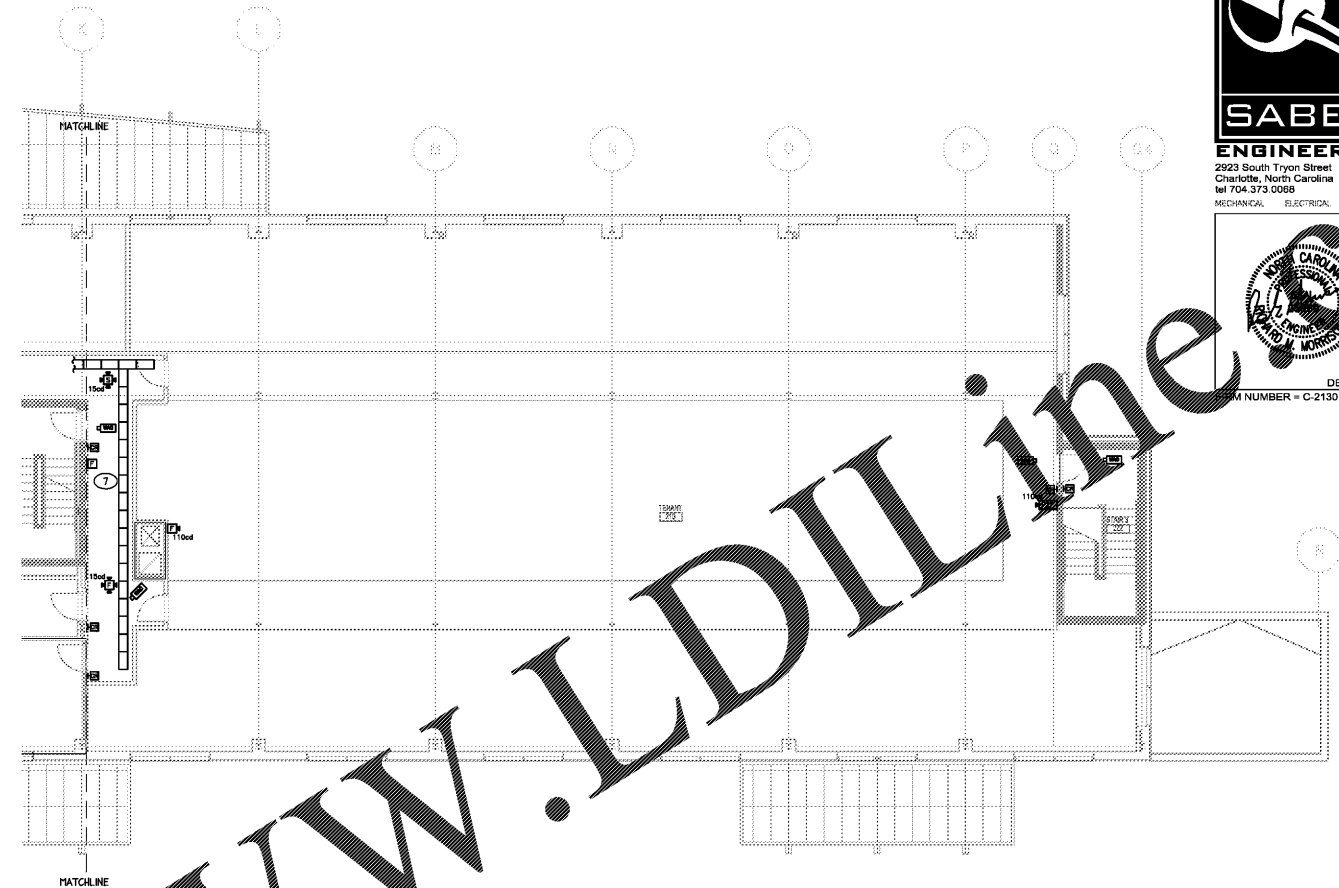
NO.	DATE	DESCRIPTION

DATE DECEMBER 7, 2016
PROJECT NUMBER 9197-000

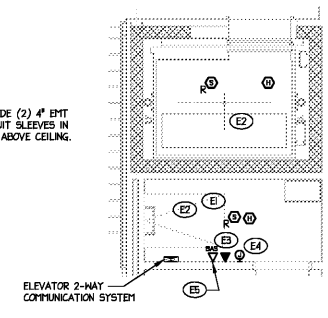
SHEET TITLE
SECOND FLOOR PLANS

SHEET NUMBER
LV-202

- NOTES:
- 1 PROVIDE RECESSED 4-GANG FLOOR BOX WITH (2) DUPLEX RECEPTACLES, (1) TELE/DATA OUTLET, AND (1) SPARE J-BOX. PROVIDE (1) 3/4" CONDUIT FOR POWER, (1) 1/2" CONDUIT FOR TELE/DATA, AND (1) 1/2" CONDUIT AND (1) 2" CONDUIT FOR FUTURE, UNDERSLAB FROM CEILING AREA TO FLOOR BOX. NOTE THE (1) 1/2" CONDUIT, (1) 1/2" CONDUIT, AND (1) 2" CONDUIT ARE TO TERMINATE IN 6"x6"x4" J-BOX ABOVE NEAREST ACCESSIBLE CEILING. PROVIDE (1) 1/2" CONDUIT AND (2) 1/2" CONDUITS FROM J-BOX TO NEAREST CABLE TRAY. FLOOR BOX TO BE HUBBELL CF8164 OR EQUIVALENT.
 - 2 PROVIDE DATA OUTLET FOR FIRE ALARM CONTROL PANEL. FIRE ALARM PANEL TO RECEIVE FIBER OPTIC CABLE. FIELD COORDINATE EXACT LOCATION AND REQUIREMENTS WITH G.C./INSTALLER.
 - 3 PROVIDE 4"x8"x1/2" VOID-FREE VIRGIN FIRE RATED PLYWOOD INSTALLED FROM 6" AFF TO 8'-6" AFF AROUND ENTIRE PERIMETER OF WALLS IN LAN AND COM ROOMS. LAG BOLT PLYWOOD TO WALLS SUCH THAT FIRE RATING STAMPS ARE VISIBLE ON ALL PLYWOOD.
 - 4 PROVIDE COPPER GROUND BAR ALONG ALL WALLS IN COM ROOM PER DETAILS ON LV-01.
 - 5 PROVIDE DATA OUTLET FOR LIGHTING CONTROL PANEL. LIGHTING CONTROL PANEL TO RECEIVE FIBER OPTIC CABLE. FIELD COORDINATE EXACT LOCATION WITH G.C./INSTALLER.
 - 6 PROVIDE (5) TOTAL DATA OUTLETS IN ACCESS CONTROL ROOM. FIELD COORDINATE EXACT LOCATIONS WITH G.C./ACCESS CONTROL VENDOR.
 - 7 PROVIDE 12"x18"x1/2" METAL BASKET TRAY ABOVE CEILING EQUIVALENT TO EATON FLEXTRAY SERIES. COORDINATE MOUNTING HEIGHT ABOVE CEILING WITH G.C., ARCHITECT, AND OWNER. ALL CONDUITS TERMINATING AT THE CABLE TRAY SHALL BE PROVIDED WITH INSULATED BUSHINGS.
 - 8 PROVIDE RECESSED IN-WALL COMBINATION A/V, POWER, TELECOM BOX EQUAL TO LEGRAND EVOLUTION SERIES 4-GANG WALL BOX CENTERED ON WALL AT 5' AFF. PROVIDE (2) 1/2" AND (1) 1/2" CONDUITS OUT OF THE TOP OF THE WALL BOX TO THE NEAREST CABLE TRAY. PROVIDE (1) 1/2" CONDUIT FOR POWER. PROVIDE (2) 2" CONDUITS OUT OF THE BOTTOM OF THE WALL BOX TO THE NEAREST CABLE TRAY.
 - 9 COORDINATE WITH M.C. TO PROVIDE 24V FIRE ALARM CONNECTION FOR FIRE SMOKE DAMPERS. DAMPERS TO CLOSE UPON FIRE ALARM SYSTEM ACTIVATION.
 - 10 ALL EMPTY CONDUITS ENTERING COM RM 220, COM RM 189, SERV ENT III, LAN/SLAN 156/159 SHALL BE LABELED AS TO WHAT THAT CONDUIT IS FOR AND THE ROOM IT TERMINATES IN. FOR EXAMPLE TELE/DATA MAC OFFICE 219'.



- ELEVATOR NOTES:
- E COORDINATE WITH ELEVATOR CONTRACTOR TO MAKE FINAL CONNECTIONS TO ELEVATOR CONTROLLERS AS REQUIRED.
 - E COORDINATE WITH SPRINKLER CONTRACTOR TO INSTALL HEAT DETECTORS WITHIN 2'-0" OF ANY SPRINKLER HEAD IN THE ELEVATOR MACHINE ROOM AND SHAFT.
 - E PROVIDE DEDICATED PHONE LINE FOR ELEVATOR. FIELD COORDINATE EXACT CONNECTION REQUIREMENTS.
 - EA PROVIDE FIRE ALARM CONNECTION INTERFACE FOR ELEVATOR. FIELD COORDINATE EXACT CONNECTION REQUIREMENTS.
 - E PROVIDE DATA OUTLET FOR ELEVATOR CONTROLLER. ELEVATOR CONTROLLER TO RECEIVE FIBER OPTIC CABLE. FIELD COORDINATE EXACT LOCATION WITH G.C./INSTALLER.



2 ENLARGED ELEVATOR EQUIPMENT ROOM
1/4"=1'-0"

1 2ND FLOOR LOW VOLTAGE PLANS
1/8"=1'-0"

Order Plans @