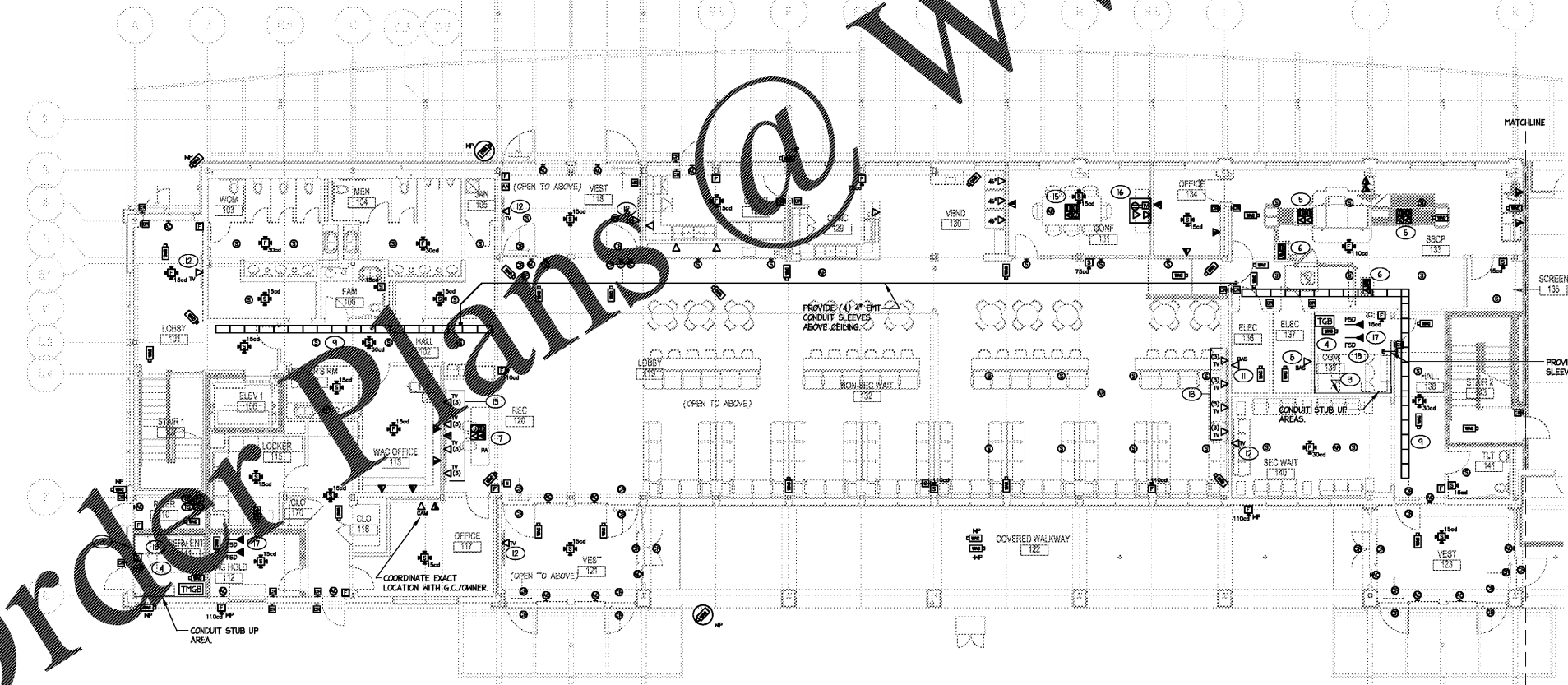
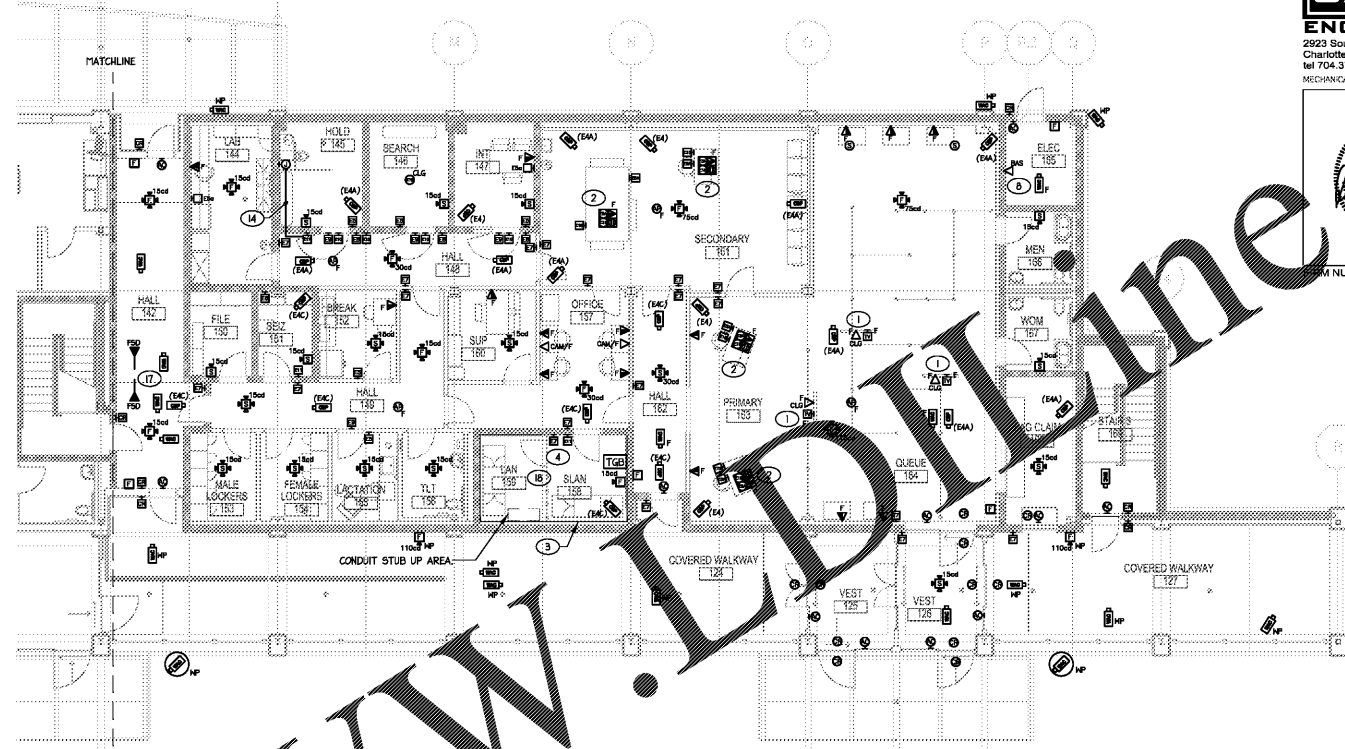


NOTES:

- 1 COORDINATE CEILING MOUNTED DATA/COAX LOCATION FOR STATUTORY DISPLAY MONITOR WITH G.C.
- 2 PROVIDE RECESSED 4-GANG FLOOR BOX WITH (1) DUPLEX RECEPTACLE, (1) TELE/DATA OUTLET, AND (2) SECURITY J-BOXES. PROVIDE (1) 1/2" FOR POWER, (1) 1/2" FOR TELE/DATA, AND (2) 1/2" FOR SECURITY UNDERSLAB FROM CEILING AREA TO FLOOR BOX. NOTE THE (1) 1/2" AND (2) 1/2" ARE TO TERMINATE IN 6"x6"x4" J-BOX ABOVE NEAREST ACCESSIBLE CEILING. PROVIDE (1) 1/2" AND (2) 1/2" FROM J-BOX TO BELONG CEILING IN LAN ROOM 194. FLOOR BOX TO BE HUBBELL CFB1G4 SERIES OR EQUIVALENT.
- 3 PROVIDE 4"x6"x1/2" VOID-FREE VIRGIN FIRE RATED PLYWOOD INSTALLED FROM 6" AFF TO 9" AFF AROUND ENTIRE PERIMETER OF HALLS IN LAN AND COM ROOMS. LAG BOLT PLYWOOD TO WALLS SUCH THAT FIRE RATING STAMPS ARE VISIBLE ON ALL PLYWOOD.
- 4 PROVIDE COPPER GROUND BAR ALONG ALL HALLS IN COM ROOM PER DETAILS ON LV-01.
- 5 PROVIDE RECESSED 4-GANG FLOOR BOX WITH (2) 20 AMP DUPLEX RECEPTACLES AND (2) TELE/DATA OUTLETS. PROVIDE (1) 1/2" FOR POWER, (2) 1/2" FOR TELE/DATA, AND (2) 1/2" SPARE CONDUITS UNDERSLAB FROM FLOOR BOX TO NEAREST CABLE TRAY OR COM RM 194. FLOOR BOX TO BE HUBBELL CFB1G4 OR EQUIVALENT.
- 6 PROVIDE RECESSED 2-GANG FLOOR BOX WITH (1) DUPLEX RECEPTACLE, (1) TELE/DATA OUTLET. PROVIDE (1) 1/2" FOR POWER, (1) 1/2" FOR TELE/DATA FROM CEILING AREA TO FLOOR BOX. NOTE THE (1) 1/2" IS TO TERMINATE IN 6"x6"x4" J-BOX ABOVE NEAREST ACCESSIBLE CEILING. PROVIDE (1) 1/2" FROM J-BOX TO NEAREST CABLE TRAY OR COM RM 194. FLOOR BOX TO BE STEEL CITY 644-SC SERIES OR EQUIVALENT.
- 7 PROVIDE RECESSED 4-GANG FLOOR BOX WITH (1) DUPLEX RECEPTACLE, (1) TELE/DATA OUTLET, (1) PA J-BOX, AND (1) SPARE. PROVIDE (1) 1/2" FOR POWER, (1) 1/2" FOR TELE/DATA, AND (1) 1/2" FOR PA, AND (2) 1/2" SPARE CONDUITS FROM CEILING AREA TO FLOOR BOX. NOTE THE (1) 1/2" AND (1) 1/2" IS TO TERMINATE IN 6"x6"x4" J-BOX ABOVE NEAREST ACCESSIBLE CEILING. PROVIDE (1) 1/2" AND (1) 1/2" FROM J-BOX TO NEAREST CABLE TRAY OR COM RM 194. FLOOR BOX TO BE HUBBELL CFB1G4 SERIES OR EQUIVALENT.
- 8 PROVIDE DATA OUTLET FOR LIGHTING CONTROL PANEL. LIGHTING CONTROL PANEL TO RECEIVE FIBER OPTIC CABLE. FIELD COORDINATE EXACT LOCATION WITH G.C./INSTALLER.
- 9 PROVIDE 12"x14"x1/4" METAL BASKET TRAY ABOVE CEILING EQUIVALENT TO EATON FLEXTAY SERIES. COORDINATE MOUNTING HEIGHT ABOVE CEILING WITH G.C., ARCHITECT, AND OWNER. ALL CONDUITS TERMINATING AT THE CABLE TRAY SHALL BE PROVIDED WITH INSULATED BUSHINGS.
- 10 PROVIDE DATA OUTLET FOR ELEVATOR CONTROLLER. ELEVATOR CONTROLLER TO RECEIVE FIBER OPTIC CABLE. FIELD COORDINATE EXACT LOCATION WITH G.C./INSTALLER.
- 11 PROVIDE DATA OUTLET FOR NAE HVAC CONTROLLER. NAE CONTROLLER TO RECEIVE FIBER OPTIC CABLE. FIELD COORDINATE EXACT LOCATION WITH G.C./INSTALLER.
- 12 PROVIDE (1) DATA OUTLET FOR SINGLE HALL MOUNTED T.V. FIELD COORDINATE EXACT LOCATION WITH G.C.
- 13 COORDINATE DATA LOCATIONS FOR (2) HALL MOUNTED TV'S ALONG HALL WITH G.C./OWNER.
- 14 PROVIDE RECESSED J-BOX BELOW TOILET WITH EMPTY 1/2" RECESSED IN HALLS AND CEILING WITH PULLSTRING TO ITEM E7 FOR TOILET CONTROLS.
- 15 PROVIDE RECESSED 4-GANG FLOOR BOX WITH (2) DUPLEX RECEPTACLES, (1) TELE/DATA OUTLET, AND (1) SPARE J-BOX. PROVIDE (1) 1/2" FOR POWER, (1) 1/2" FOR TELE/DATA, AND (1) 1/2" AND (1) 2" FOR FUTURE UNDERSLAB FROM CEILING AREA TO FLOOR BOX. NOTE THE (1) 1/2", (1) 1/2", AND (1) 2" ARE TO TERMINATE IN 6"x6"x4" J-BOX ABOVE NEAREST ACCESSIBLE CEILING. PROVIDE (1) 1/2" AND (2) 1/2" FROM J-BOX TO NEAREST CABLE TRAY. FLOOR BOX TO BE HUBBELL CFB1G4 OR EQUIVALENT.
- 16 PROVIDE RECESSED IN-HALL COMBINATION A/V, POWER, TELECOM BOX EQUAL TO LEGRAND EVOLUTION SERIES 4-GANG HALL BOX CENTERED ON HALL AT 55" AFF. PROVIDE (2) 1/2" AND (1) 1/2" CONDUITS OUT OF THE TOP OF THE HALL BOX TO THE NEAREST CABLE TRAY. PROVIDE (1) 1/2" CONDUIT FOR POWER. PROVIDE (2) 1/2" CONDUITS OUT OF THE BOTTOM OF THE HALL BOX TO THE NEAREST CABLE TRAY.
- 17 COORDINATE WITH H.C. TO PROVIDE 24V FIRE ALARM CONNECTION FOR FIRE SMOKE DAMPERS. DAMPERS TO CLOSE UPON FIRE ALARM SYSTEM ACTIVATION.
- 18 ALL EMPTY CONDUITS ENTERING COM RM 220, COM RM 194, SERV ENT III, LAN/SLAN 156/154 SHALL BE LABELED AS TO WHAT THAT CONDUIT IS FOR AND THE ROOM IT TERMINATES IN. FOR EXAMPLE "TELE/DATA HALL OFFICE 215".



1 1ST FLOOR LOW VOLTAGE PLANS
1/8"=1'-0"



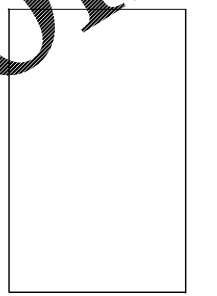
SABER ENGINEERING

2923 South Tryon Street, Suite 280
Charlotte, North Carolina 28203
Tel 704.373.0069

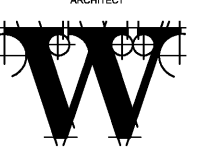
MECHANICAL, ELECTRICAL, PLUMBING & FIRE PROTECTION ENGINEER
FIRM NUMBER = C-2130

**WILSON AIR CENTER
NORTH TERMINAL**

ARCHITECT
THE WILSON GROUP



ARCHITECT



THE WILSON GROUP
P.O. BOX 5510
CHARLOTTE, NC 28299
(704) 351-9747

CIVIL ENGINEER
TALBERT, BRIGHT & ELLINGTON
3025 WHITEHALL PARK DRIVE, SUITE 210
CHARLOTTE, NC 28273
(704) 426-6070 FIRM NO. C-1163

STRUCTURAL ENGINEER
STEWART
101 N. TRYON ST., SUITE 1400
CHARLOTTE, NC 28202
(704) 909-3523 FIRM NO. C-1051

MECHANICAL, ELECTRICAL, PLUMBING & FIRE PROTECTION ENGINEER
SABER ENGINEERING
2923 S. TRYON ST., SUITE 280
CHARLOTTE, NC 28203
(704) 373-0069 FIRM NO. C-2130

LANDSCAPE ARCHITECT
URBAN DESIGN PARTNERS
1318-66 CENTRAL AVENUE
CHARLOTTE, NC 28205
(704) 334-3333 FIRM NO. C-1180

COMMUNICATIONS INFRASTRUCTURE
DB CONSULTING
246 LOVES FARM ROAD
BLACKSBURG, SC 29702
(704) 491-7228 FIRM NO. C-1180

REVISIONS

NO.	DATE	DESCRIPTION

DATE DECEMBER 7, 2018
PROJECT NUMBER 9197-000

SHEET TITLE
FIRST FLOOR PLANS

SHEET NUMBER
LV-201

Order Plans @

ML-1710-1220/1/4.dwg, Plotted By: rsm
Dec 11, 2018, 11:38am