



ARCHITECT  
**W**  
THE WILSON GROUP  
P O BOX 5510  
CHARLOTTE, NC 28209  
(704) 331-0747

CIVIL ENGINEER  
TALBERT, BRIGHT & ELLINGTON  
3825 WHITEHALL PARK DRIVE, SUITE 210  
CHARLOTTE, NC 28273  
(704) 428-6070 FIRM NO.: C-1163

STRUCTURAL ENGINEER  
STEWART  
101 N. TRYON ST., SUITE 1400  
CHARLOTTE, NC 28202  
(704) 905-3523 FIRM NO.: C-1051

MECHANICAL, ELECTRICAL, PLUMBING & FIRE PROTECTION ENGINEER  
SABER ENGINEERING  
2923 S. TRYON ST., SUITE 200  
CHARLOTTE, NC 28203  
(704) 373-0068 FIRM NO.: C-2130

LANDSCAPE ARCHITECT  
URBAN DESIGN PARTNERS  
1318-E6 CENTRAL AVENUE  
CHARLOTTE, NC 28205  
(704) 334-3303 FIRM NO.: C-TBD

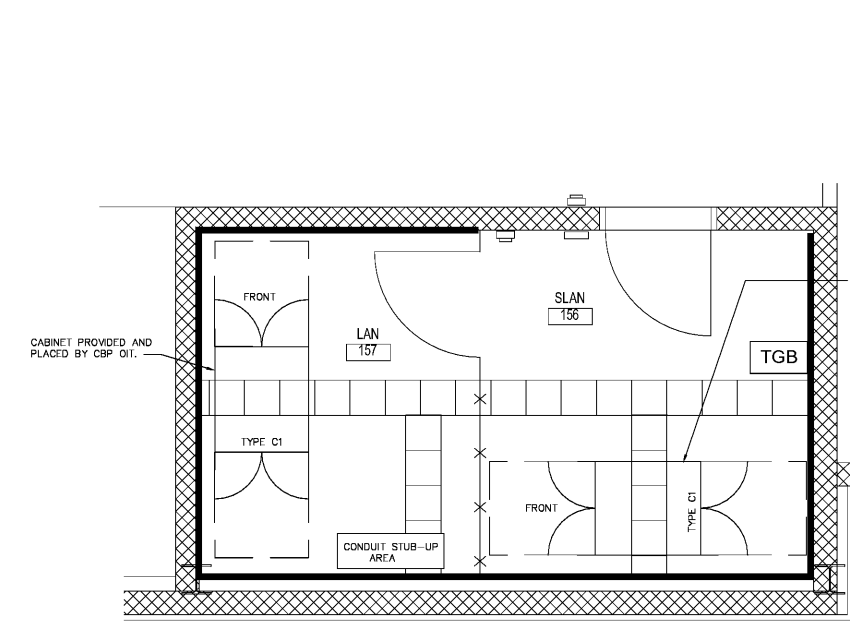
COMMUNICATIONS INFRASTRUCTURE  
DB CONSULTING  
246 LOVES FARM ROAD  
BLACKSBURG, SC 29702  
(704) 497-7229 FIRM NO.: C-TBD

REVISIONS

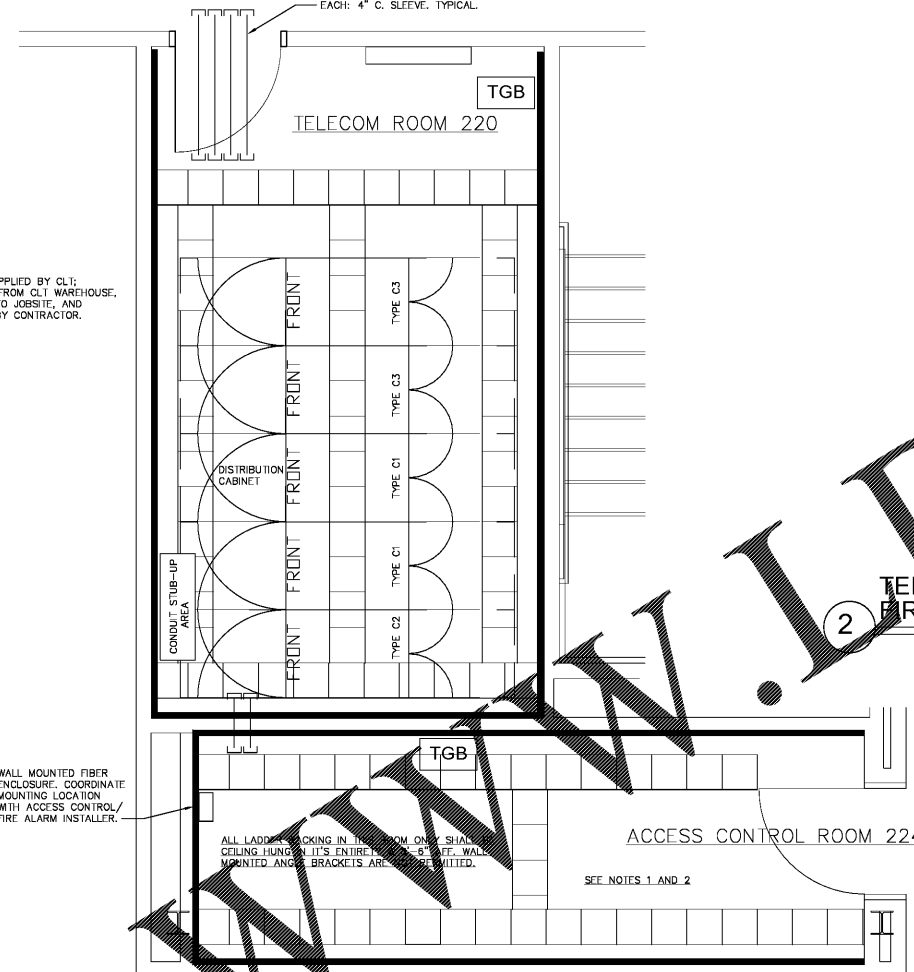
DATE: DECEMBER 07, 2018  
PROJECT NUMBER: 9197-000

SHEET TITLE  
TELECOM ROOMS ENLARGED PLANS

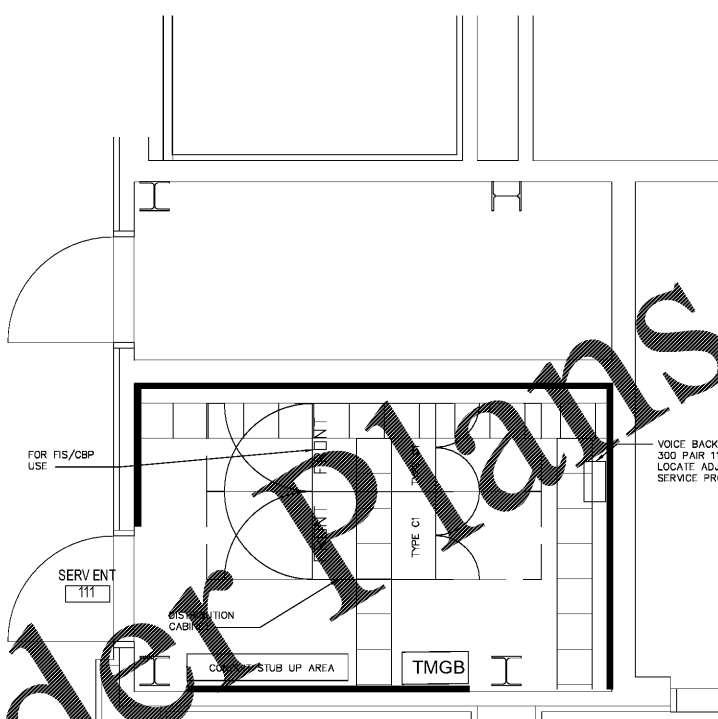
SHEET NUMBER  
TC-301



4 FIS/CBP TELECOM ROOMS 156 & 157 - ENLARGED PLAN FIRST LEVEL  
SCALE: 1"= 2'-0"



3 TELECOM ROOM 220 / ACCESS CONTROL 224 ENLARGED PLAN - SECOND LEVEL  
SCALE: 1"= 2'-0"



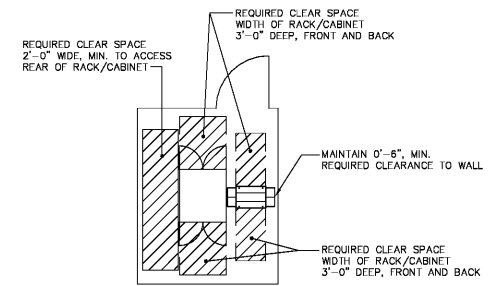
1 TELECOM SERVICE ENTRANCE ROOM 111 - ENLARGED PLAN FIRST LEVEL  
SCALE: 1"= 2'-0"

TELECOM ROOM ENLARGED PLAN NOTES APPLICABLE TO ALL ENLARGED PLANS THIS SHEET

- 1. ALL ITEMS ARE PROVIDED AND INSTALLED BY CABLING CONTRACTOR EXCEPT AS OTHERWISE NOTED.
- 2. INSTALL LADDER RACKING @ 8'-6" AFF U.O.N. ADJUST LADDER RACKING HEIGHT AS REQUIRED TO AVOID INTERFERENCE WITH DOOR SWINGS OR OTHER ITEMS IN ROOM.
- 3. ENDS OF LADDER RACKING RUNS MAY BUTT INTO WALL, HOWEVER, MAINTAIN 0'-6" CLEAR BETWEEN WALLS AND SIDES OF LADDER RACKING TO ALLOW FOR CABLING TO PASS BETWEEN LADDER RACKING SIDE AND WALL.
- 4. MOUNT TELECOM GROUNDING BARS @ 7'-6" AFF TO TOP OF BAR.
- 5. CONDUIT STUB UP AREAS ARE SHOWN AS A GENERAL GUIDE FOR MAJOR CONDUIT STUBS ONLY. DO NOT INSTALL STUB-UPS IN LOCATIONS THAT WILL INTERFERE WITH OTHER ITEMS IN ROOM, INCLUDING CABINET DOOR SWING OPERATION.
- 6. INSTALL ALL CONDUIT STUBS AS CLOSE TO WALL AS FEASIBLE.
- 7. ALL DEVICE CONDUITS SHALL STUB TO WITHIN 12" OF, AND ABOVE, LADDER RACKING.
- 8. PROVIDE INSULATING THROAT BUSHING ON ALL TELECOM CONDUIT AND SLEEVE ENDS.
- 9. HEAVY LINES SHOWN ON WALL INDICATE PLYWOOD BACKBOARD. PROVIDE 3/4" VOID-FREE, VIRGIN PLYWOOD, LAG BOLTED TO WALLS, FROM 0'-6" AFF TO 8'-6" AFF ON WALL AREAS INDICATED. INSTALL PLYWOOD BACKBOARDS SO THAT FIRE RATING STAMPS ARE VISIBLE.

CABINET TYPE LEGEND

TYPICAL TELECOM CABINET, 30" X 42" X 7'-0" U.O.N. SCRIPT INDICATES THE CABINET CONFIGURATION:  
\*C1\* - SINGLE COMPARTMENT CABINET.  
\*C2\* - TWO COMPARTMENT CABINET.  
\*C3\* - THREE COMPARTMENT CABINET.  
ALL POWER RECEPTACLES FOR CABINETS SHALL BE STRUT MOUNTED ALIGNED WITH REAR EDGE AND ABOVE CABINET SERVED. POWER RECEPTACLES SHALL NOT BE SUPPORTED BY, OR OBSTRUCT ACCESS TO LADDER RACKING.



5 TYPICAL TELECOMMUNICATION ROOMS REQUIRED CLEARANCES  
SCALE: NONE

- NOTES:  
1. THIS DETAIL IS DIAGRAMMATIC IN NATURE AND IS INTENDED TO SHOW REQUIRED WORKING CLEARANCES AROUND RACKS, CABINETS, AND/OR EQUIPMENT ENCLOSURES. ALL CLEARANCES SHOWN ARE THE MINIMUM ALLOWED.  
2. CONDUIT STUB-UPS, AND ANY OTHER HINDERANCES ARE NOT ALLOWED WITHIN THE CLEAR SPACE AREAS.  
3. PROVIDE A 2'-0" MINIMUM CLEAR WALK-AROUND PATH ON AT LEAST ONE SIDE OF RACKS, CABINETS, AND/OR ENCLOSURES REQUIRING REAR ACCESS. WALK PATH SHALL BE "CLEAR" AS PER NOTE 2.  
4. MAINTAIN 0'-6" CLEAR, MINIMUM, FROM SIDES OF CABINETS, RACKS, WIRE MANAGERS, ETC., AND THE WALL OR BACKBOARD SURFACE.

"FOR OFFICIAL USE ONLY"  
"WARNING: This document is FOR OFFICIAL USE ONLY (FOUO). It contains information that may be exempt from public release under the Freedom of Information Act (5 U.S.C. 552). It is to be controlled, stored, handled, transmitted, distributed and disposed of in accordance with DHS policy relating to FOUO information and is not to be released to the public or other personnel who do not have a valid 'need-to-know' without prior approval of an authorized DHS official."

Order Plans

WWW.IDDLINE.COM