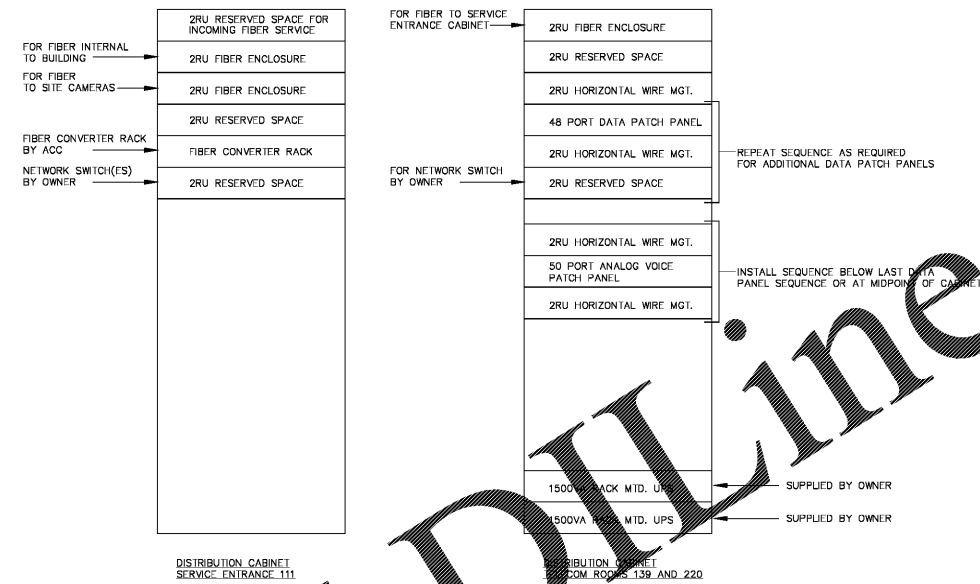


1 TYPICAL LADDER RACKING AND STANDOFF DETAIL

NOTES:
 1. THIS DRAWING IS DIAGRAMMATIC IN NATURE AND IS INTENDED TO SHOW VERTICAL WIRE MANAGEMENT AREAS IN RELATION TO TYPICAL RACKS AND LADDER RACKING ASSEMBLIES IN IDF ROOMS. LADDER RACK ASSEMBLY OVER CABINETS IN MDF IS SIMILAR. PROVIDE VERTICAL WIRE MANAGEMENT SECTIONS BETWEEN ALL RACKS, OR ON BOTH ENDS OF SINGLE RACK. VERTICAL WIRE MANAGEMENT IN CABINETS IS INTERNAL TO EACH CABINET, THEREFORE EXTERNAL VERTICAL WIRE MANAGEMENT IS NOT REQUIRED BETWEEN CABINETS.

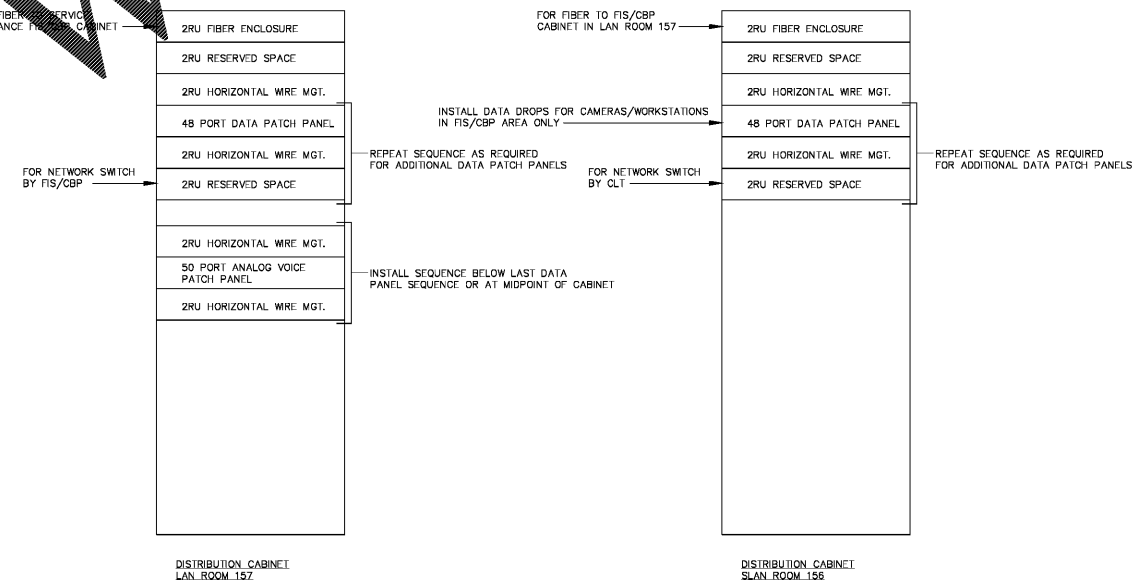
SCALE: NONE



2 TELECOM DISTRIBUTION CABINETS ELEVATION - COMPONENT MOUNTING ARRANGEMENT DIAGRAM

NOTES:
 1. FINAL INSTALLED ARRANGEMENT OF COMPONENTS IS AT OWNERS (CLT IT) DISCRETION. COORDINATE WITH CLT IT REPRESENTATIVE BEFORE CABINET BUILDOUT BEGINS.

SCALE: NONE

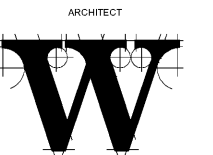


3 LAN ROOM 157 AND SLAN ROOM 156 - FIS/CBP CABINETS TELECOM DISTRIBUTION CABINETS ELEVATION - COMPONENT MOUNTING ARRANGEMENT DIAGRAM

NOTES:
 1. FINAL INSTALLED ARRANGEMENT OF COMPONENTS IS AT OWNERS (FIS/CBP OIT) DISCRETION. COORDINATE WITH FIS/CBP OIT REPRESENTATIVE BEFORE CABINET BUILDOUT BEGINS.

SCALE: NONE

"FOR OFFICIAL USE ONLY"
 "WARNING: This document is FOR OFFICIAL USE ONLY (FOUO). It contains information that may be exempt from public release under the Freedom of Information Act (5 U.S.C. 552). It is to be controlled, stored, handled, transmitted, distributed and disposed of in accordance with DHS policy relating to FOUO information and is not to be released to the public or other personnel who do not have a valid "need-to-know" without prior approval of an authorized DHS official."



THE WILSON GROUP

P.O. BOX 5510
 CHARLOTTE, NC 28209
 (704) 331-0747

CIVIL ENGINEER
TALBERT, BRIGHT & ELLINGTON

3825 WHITEHALL PARK DRIVE, SUITE 210
 CHARLOTTE, NC 28273
 (704) 426-6070 FIRM NO.: C-1163

STRUCTURAL ENGINEER
STEWART

101 N. TRYON ST., SUITE 1400
 CHARLOTTE, NC 28202
 (704) 909-3823 FIRM NO.: C-1051

MECHANICAL, ELECTRICAL, PLUMBING & FIRE PROTECTION ENGINEER
SABER ENGINEERING

2923 S. TRYON ST., SUITE 200
 CHARLOTTE, NC 28203
 (704) 373-0068 FIRM NO.: C-2130

LANDSCAPE ARCHITECT
URBAN DESIGN PARTNERS

1318-E6 CENTRAL AVENUE
 CHARLOTTE, NC 28205
 (704) 334-3303 FIRM NO. C-TBD

COMMUNICATIONS INFRASTRUCTURE
DB CONSULTING

246 LOVES FARM ROAD
 BLACKSBURG, SC 29702
 (704) 497-7228 FIRM NO. C-TBD

REVISIONS

DATE: DECEMBER 07, 2018
 PROJECT NUMBER: 9197-000

SHEET TITLE
TELECOM DIAGRAMS AND DETAILS

SHEET NUMBER
TC-002

Order Plans @