



2923 South Tryon Street Suite 280
Charlotte, North Carolina 28203
tel 704.373.0068

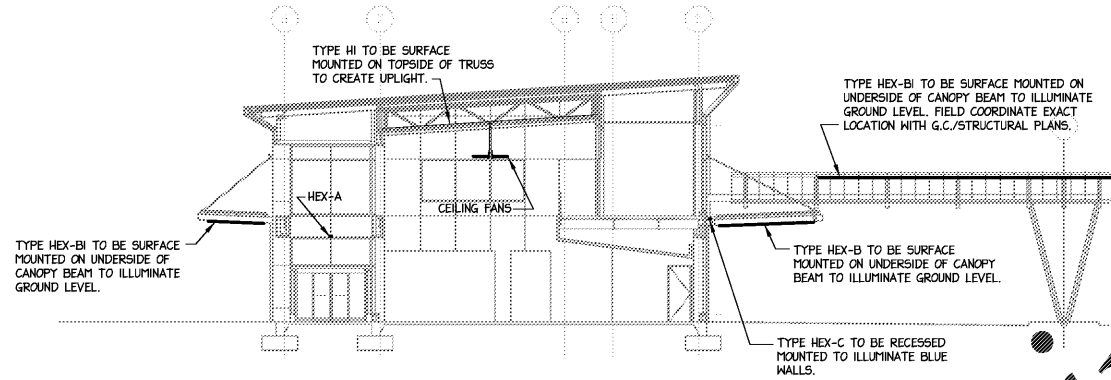
MECHANICAL ELECTRICAL PLUMBING & FIRE PROTECTION ENGINEERING



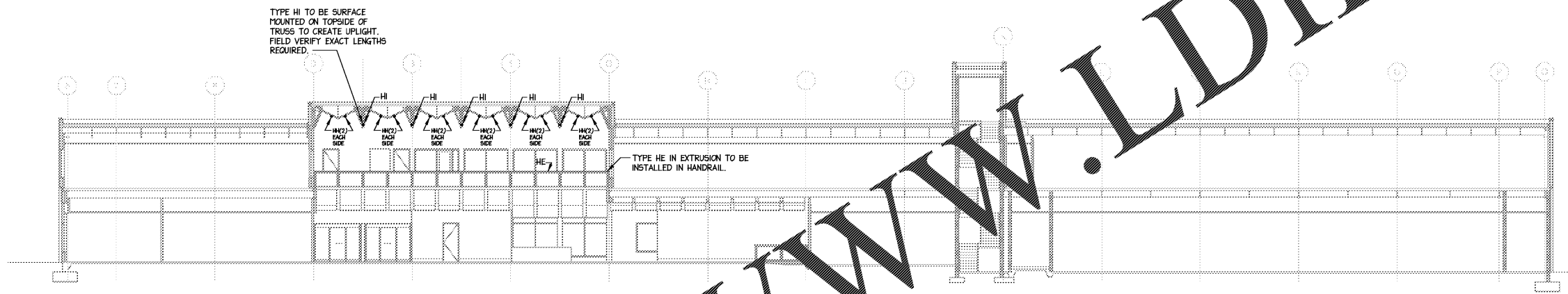
DEC 7, 2018
NUMBER = C-2130

WILSON AIR CENTER
NORTH TERMINAL

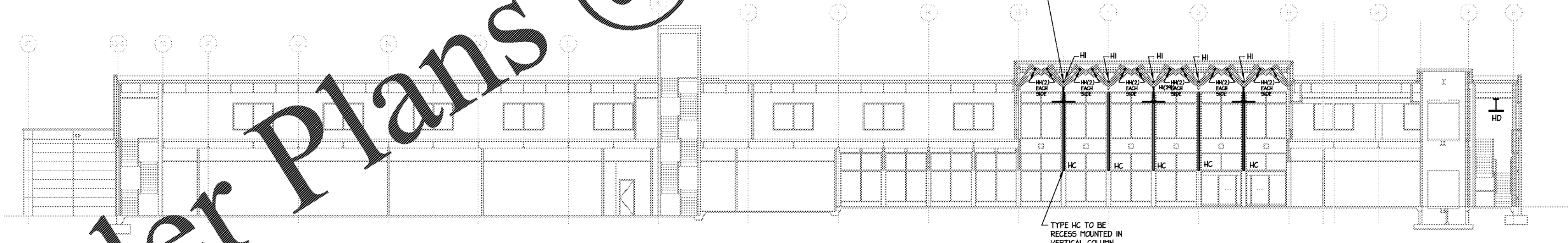
HCDT FIRM NO. 001
CHARLOTTE-MECKLENBURG
INTERNATIONAL AIRPORT
TERRELL FIELD
CHARLOTTE, NC 28203



1 CROSS SECTION
1"=10'



2 LONGITUDINAL SECTION
1"=10'



3 LONGITUDINAL SECTION
1"=10'

ARCHITECT
W
THE WILSON GROUP
P O BOX 5510
CHARLOTTE, NC 28299
(704) 331-9747

CIVIL ENGINEER
TALBERT, BRIGHT & ELLINGTON
3525 WHITEHALL PARK DRIVE, SUITE 210
CHARLOTTE, NC 28273
(704) 426-6070 FIRM NO. C-1163

STRUCTURAL ENGINEER
STEWART
101 N. TRYON ST., SUITE 1400
CHARLOTTE, NC 28202
(704) 909-3523 FIRM NO. C-1051

MECHANICAL, ELECTRICAL, PLUMBING & FIRE PROTECTION ENGINEER
SABER ENGINEERING
2923 S. TRYON ST., SUITE 280
CHARLOTTE, NC 28203
(704) 373-0068 FIRM NO. C-2130

LANDSCAPE ARCHITECT
URBAN DESIGN PARTNERS
1318-66 CENTRAL AVENUE
CHARLOTTE, NC 28205
(704) 394-3303 FIRM NO. C-TBD

COMMUNICATIONS INFRASTRUCTURE
DB CONSULTING
246 LIVES FARM ROAD
BLACKSBURG, SC 29702
(704) 497-7228 FIRM NO. C-TBD

REVISIONS

NO.	DATE	DESCRIPTION

DATE DECEMBER 7, 2018
PROJECT NUMBER 9197-000

SHEET TITLE
INTERIOR SECTIONS LIGHTING PLANS

SHEET NUMBER
E-205L

Order Plans @ www.LDILine.com