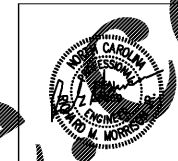
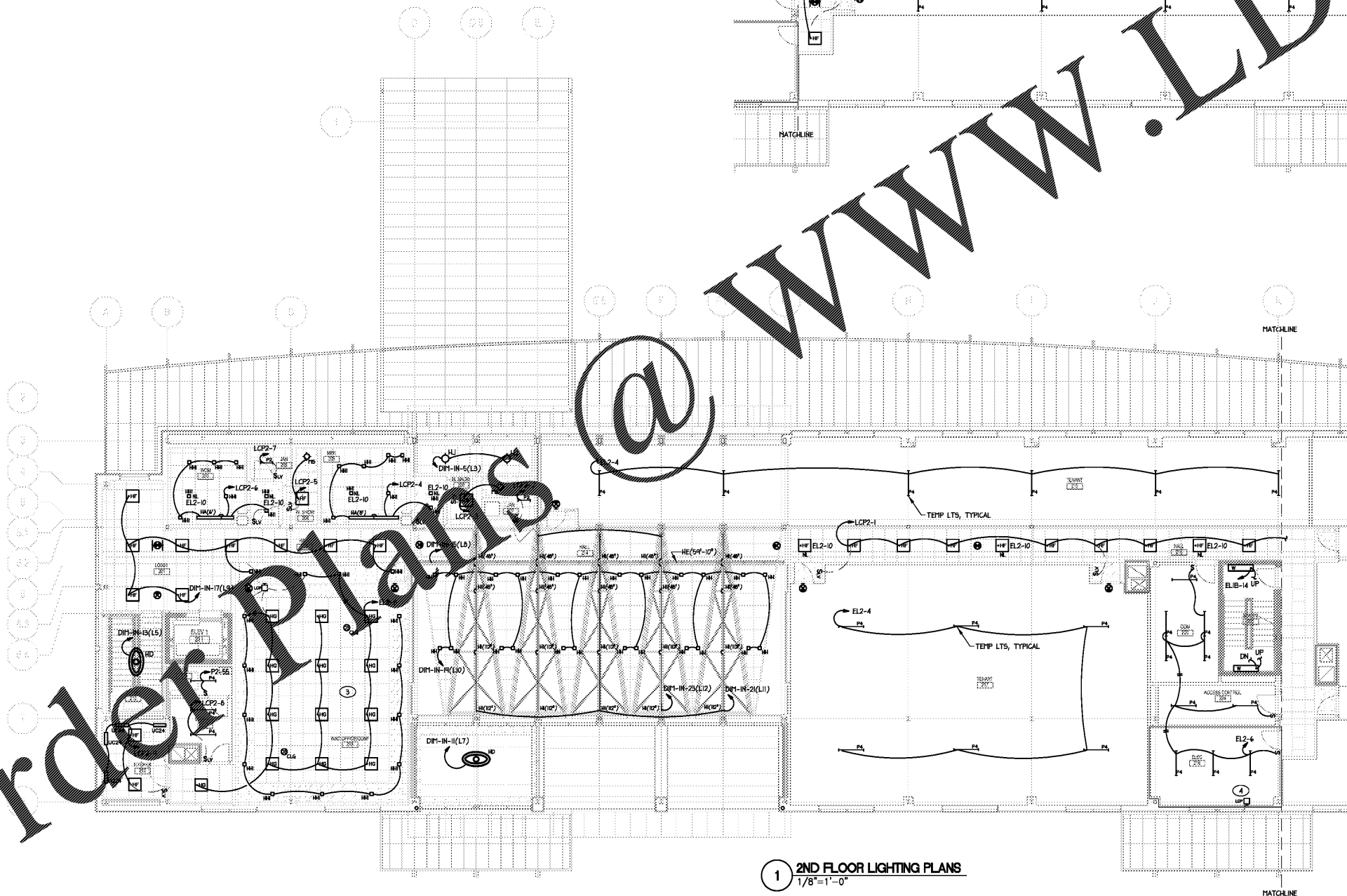
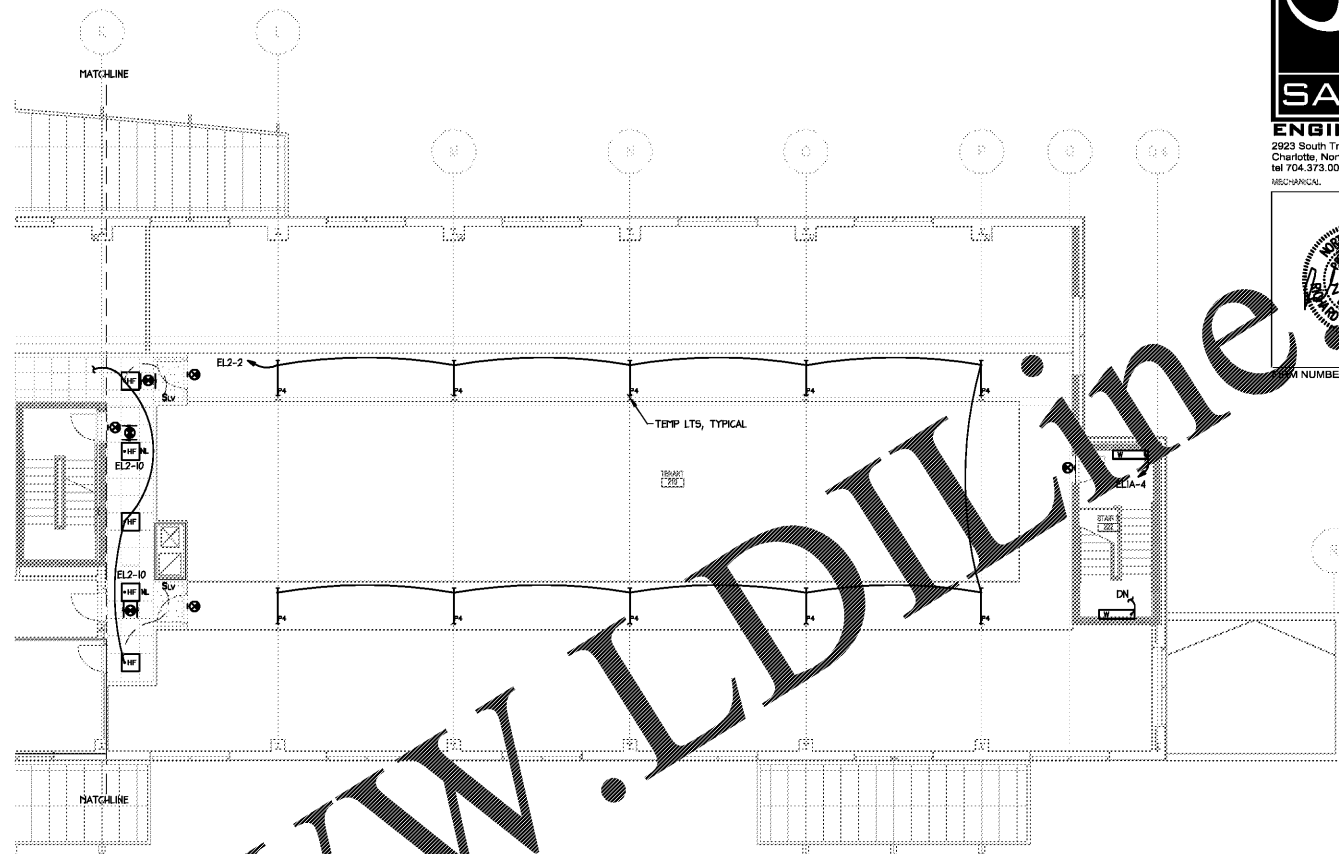




WILSON AIR CENTER
NORTH TERMINAL

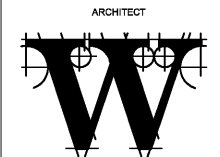


DEC 7, 2018
PROJECT NUMBER = C-2130



1 2ND FLOOR LIGHTING PLANS
1/8" = 1'-0"

- NOTES:
- CONNECT ALL EXIT LIGHTS TO NEAREST UNSWITCHED LEG OF LOCAL EMERGENCY LIGHTING CIRCUIT, TYPICAL FOR EACH.
 - LIGHTING CIRCUIT NUMBER DESIGNATIONS:
EL2-CIRCUIT CONNECTED TO PANEL.
DIM-EX/INT CIRCUIT CONNECTED TO DIMMING PANEL.
LCP2-CIRCUIT CONNECTED TO PANEL VIA LIGHTING CONTROL RELAY PANEL.
 - E.C. TO PROVIDE COMPLETE ROOM LIGHTING CONTROL SYSTEM AS MANUFACTURED BY LUTRON FOR THE CONFERENCE ROOM WITH (2) CEILING MOUNTED OCCUPANCY DUAL TECHNOLOGY SENSORS, (1) GRAPHIC EYE QS FOR CONTROL, AND (3) DIMMING POWER/RELAY PACKS. LIGHTS TO BE COMPATIBLE WITH DIMMING DRIVERS. PROVIDE EMERGENCY RELAY FOR ROOM LIGHTING CONTROLLER. COORDINATE EXACT EQUIPMENT AND WIRING REQUIREMENTS WITH LUTRON PRIOR TO PROJECT START UP. SEE SHEET E-207L FOR DETAILS.
 - LOCATION FOR MASTER EXTERIOR DIMMING LIGHT CONTROL SCENE SELECTOR.



ARCHITECT
THE WILSON GROUP

P O BOX 5610
CHARLOTTE, NC 28209
(704) 331-9747

CIVIL ENGINEER
TALBERT, BRIGHT & ELLINGTON
3525 WHITEHALL PARK DRIVE, SUITE 210
CHARLOTTE, NC 28273
(704) 426-6070 FIRM NO. C-1163

STRUCTURAL ENGINEER
STEWART
101 N. TRYON ST., SUITE 1400
CHARLOTTE, NC 28202
(704) 909-3523 FIRM NO. C-1051

MECHANICAL, ELECTRICAL, PLUMBING & FIRE PROTECTION ENGINEER
SABER ENGINEERING
2923 S. TRYON ST., SUITE 280
CHARLOTTE, NC 28203
(704) 373-0068 FIRM NO. C-2130

LANDSCAPE ARCHITECT
URBAN DESIGN PARTNERS
1318-EB CENTRAL AVENUE
CHARLOTTE, NC 28205
(704) 334-3303 FIRM NO. C-TB0

COMMUNICATIONS INFRASTRUCTURE
DB CONSULTING
248 LOVES FARM ROAD
BLACKSBURG, SC 29702
(704) 497-7228 FIRM NO. C-TB0

REVISIONS

DATE DECEMBER 7, 2018
PROJECT NUMBER 9197-000

SHEET TITLE
SECOND FLOOR LIGHTING PLANS

SHEET NUMBER
E-202L

Order Plans

WWW.LDILINE.COM