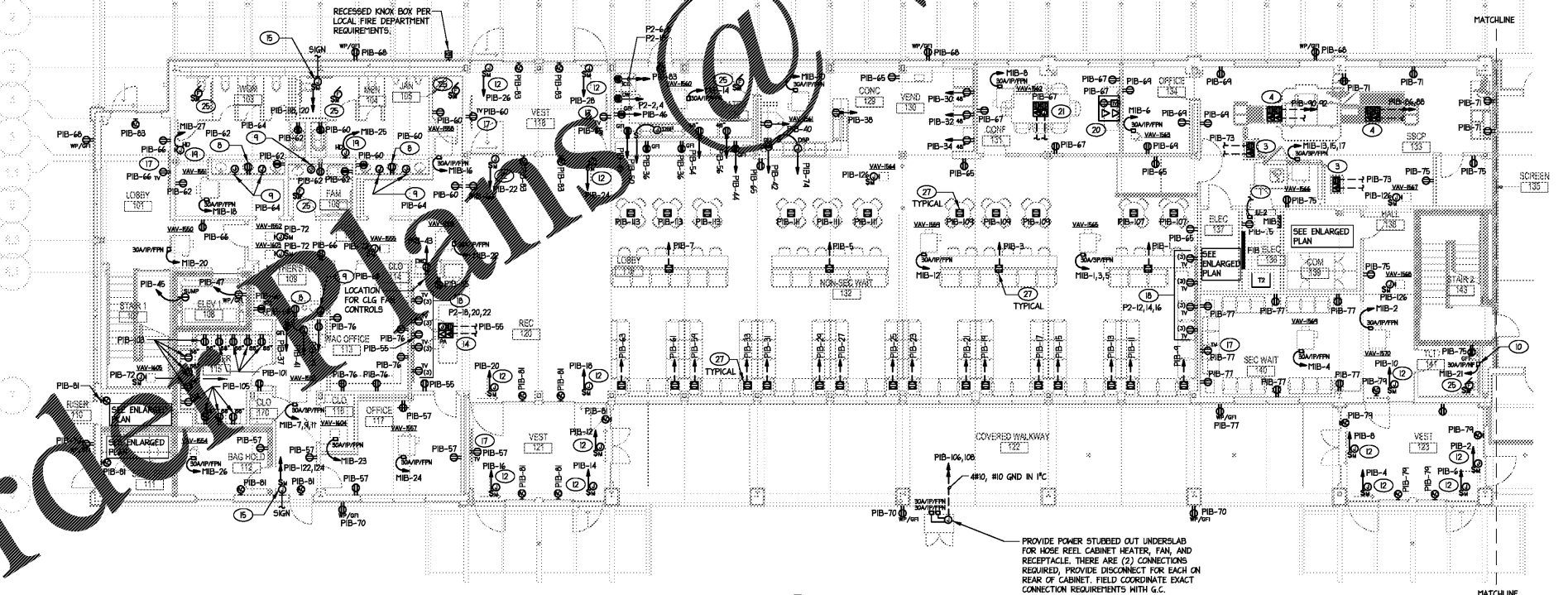
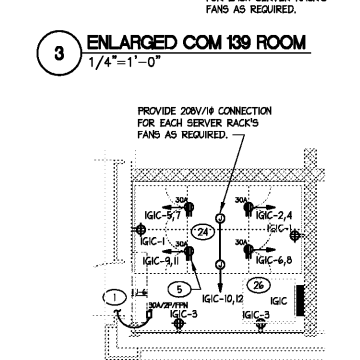
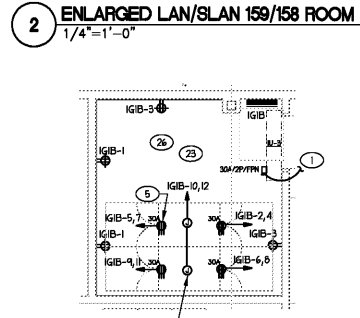
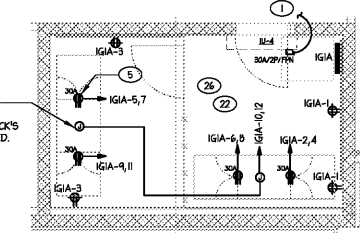
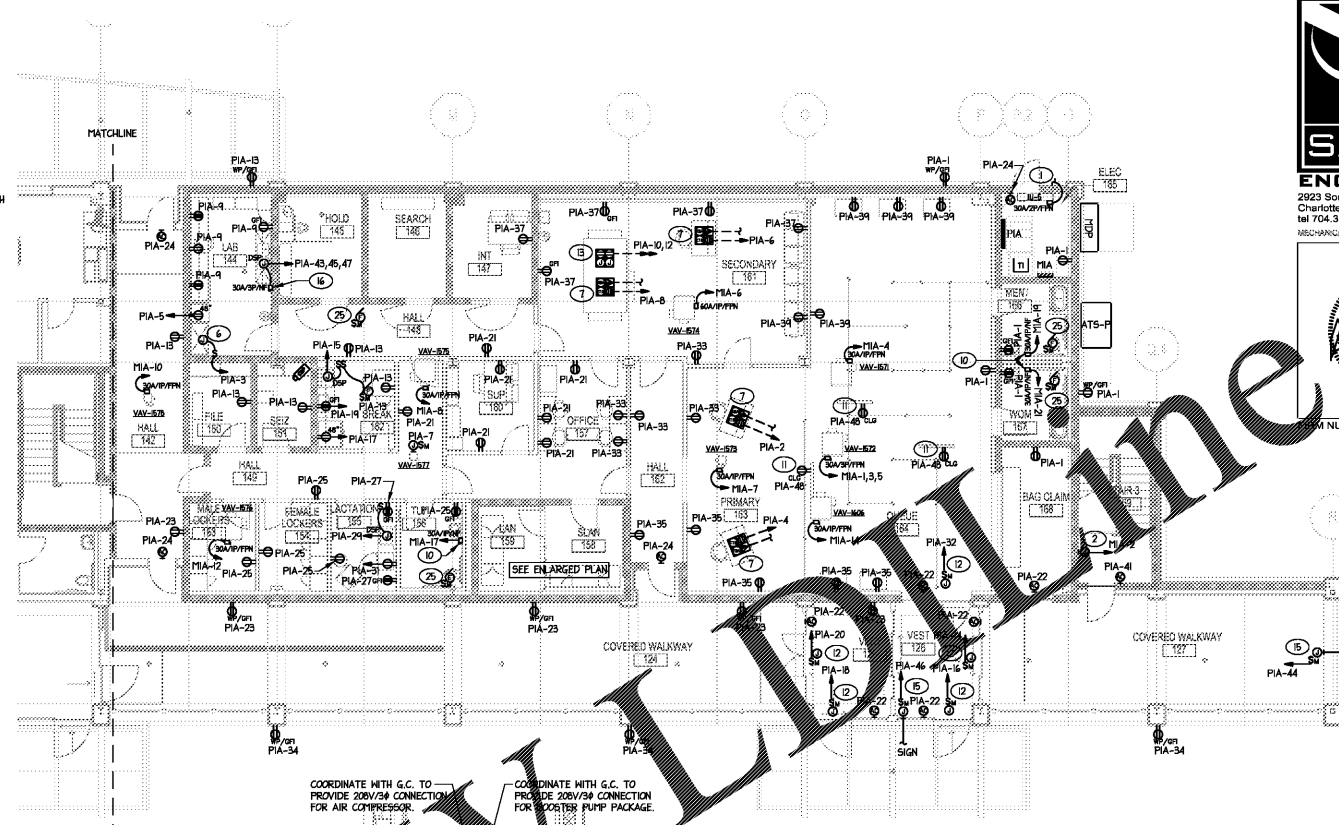
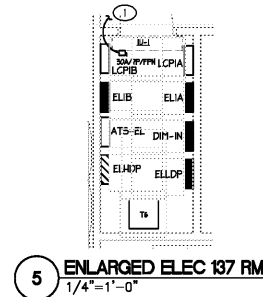


- NOTES:**
- COORDINATE WITH M.C. TO WIRE INDOOR UNIT VIA OUTDOOR UNIT.
  - COORDINATE WITH M.C. TO PROVIDE 277V/1Ø CONNECTION FOR WALL HEATER.
  - PROVIDE RECESSED 2-GANG FLOOR BOX WITH (1) DUPLEX RECEPTACLE, (1) TELE/DATA OUTLET, PROVIDE (1) 1/2" FC FOR POWER, (1) 1/2" FC FOR TELE/DATA FROM CEILING AREA TO FLOOR BOX. NOTE THE (1) 1/2" FC IS TO TERMINATE IN 6/6x4/4" J-BOX ABOVE NEAREST ACCESSIBLE CEILING. PROVIDE (1) 1/2" FC FROM J-BOX TO NEAREST CABLE TRAY OR COM R19. FLOOR BOX TO BE STEEL CITY 664-SC SERIES OR EQUIVALENT.
  - PROVIDE RECESSED 4-GANG FLOOR BOX WITH (2) 20 AMP DUPLEX RECEPTACLES AND (2) TELE/DATA OUTLETS. PROVIDE (1) FC FOR POWER, (2) FC FOR TELE/DATA, AND (2) 1/2" FC SPARE CONDUITS UNDERSLAB FROM FLOOR BOX TO NEAREST CABLE TRAY OR COM R19. FLOOR BOX TO BE HUBBELL CFBIG4 OR EQUIVALENT.
  - PROVIDE (2) 16-3Ø RECEPTABLES PER SERVER RACK. FIELD COORDINATE EXACT MOUNTING LOCATIONS WITH RACK INSTALLER. TYPICAL OF (2) SERVER RACKS. NOTE RECEPTABLES SHALL NOT BE SUPPORTED BY OR OBSTRUCT ACCESS TO LADDER RACKING.
  - COORDINATE WITH G.C. TO PROVIDE 120V CONNECTION FOR LIGHTS AND EXHAUST FAN FOR FUME HOOD.
  - PROVIDE RECESSED 4-GANG FLOOR BOX WITH (1) DUPLEX RECEPTACLE, (1) TELE/DATA OUTLET, AND (2) SECURITY J-BOXES. PROVIDE (1) 1/2" FC FOR POWER, (1) 1/2" FC FOR TELE/DATA, AND (2) 1/2" FC FOR SECURITY UNDERSLAB FROM CEILING AREA TO FLOOR BOX. NOTE THE (1) 1/2" FC AND (2) 1/2" FC'S ARE TO TERMINATE IN 6/6x4/4" J-BOX ABOVE NEAREST ACCESSIBLE CEILING. PROVIDE (1) 1/2" FC AND (2) 1/2" FC'S FROM J-BOX TO BELOW CEILING IN LAN/SLAN ROOM. FLOOR BOX TO BE HUBBELL CFBIG4 SERIES OR EQUIVALENT.
  - PROVIDE RECEPTACLE BELOW COUNTER FOR CONNECTION TO FAUCET POWER SUPPLY. FIELD COORDINATE EXACT LOCATION WITH P.C./G.C.
  - PROVIDE J-BOX IN WALL BEHIND PAPER TOWEL DISPENSER WITH 120V CIRCUIT FOR FUTURE RECEPTACLE. FIELD COORDINATE EXACT LOCATION WITH G.C. AND ARCHITECTURAL ELEVATIONS.
  - COORDINATE WITH P.C. TO PROVIDE 277V/1Ø CONNECTION FOR WATER HEATER UNDER SINK.
  - COORDINATE CEILING MOUNTED RECEPTACLE LOCATION FOR STATUTORY DISPLAY MONITOR WITH G.C.
  - COORDINATE WITH G.C./INSTALLER TO PROVIDE 120V CONNECTION FOR AUTOMATIC DOOR.
  - PROVIDE RECESSED 4-GANG FLOOR BOX WITH (2) 20 AMP DUPLEX RECEPTACLES AND (2) SPARE J-BOXES. PROVIDE (1) FC FOR POWER AND (3) 1/2" FC'S FOR SPARE. UNDERSLAB FROM FLOOR BOX TO ABOVE CEILING AND TO LAN R19. FLOOR BOX TO BE EQUIVALENT TO HUBBELL CFBIG4 SERIES.
  - PROVIDE RECESSED 4-GANG FLOOR BOX WITH (1) DUPLEX RECEPTACLE, (1) TELE/DATA OUTLET, (1) PA-J-BOX, AND (1) SPARE. PROVIDE (1) 1/2" FC FOR POWER, (1) 1/2" FC FOR TELE/DATA, AND (1) 1/2" FC FOR PA, AND (2) 1/2" FC SPARE CONDUITS FROM CEILING AREA TO FLOOR BOX. NOTE THE (1) 1/2" FC AND (1) FC IS TO TERMINATE IN 6/6x4/4" J-BOX ABOVE NEAREST ACCESSIBLE CEILING. PROVIDE (1) 1/2" FC AND (1) FC FROM J-BOX TO NEAREST CABLE TRAY OR COM R19. FLOOR BOX TO BE HUBBELL CFBIG4 SERIES OR EQUIVALENT.
  - PROVIDE 120V CONNECTIONS FOR EXTERIOR SIGN VIA J-BOX ABOVE ACCESSIBLE CEILING. FIELD COORDINATE EXACT SIGN CONNECTION LOCATION AND CONNECTION REQUIREMENTS WITH G.C./INSTALLER.
  - COORDINATE WITH P.C. TO PROVIDE 208V/3Ø CONNECTION FOR DISPOSAL CONTROL PANEL.
  - COORDINATE RECEPTACLE LOCATION FOR WALL MOUNTED TV WITH G.C./OWNER.
  - COORDINATE RECEPTACLE LOCATIONS FOR (2) WALL MOUNTED TV'S ALONG HALL WITH G.C./OWNER. UTILIZE CIRCUITS INDICATED, (4) TV RECEPT PER CIRCUIT.
  - COORDINATE WITH G.C. TO PROVIDE 277V CONNECTION FOR HAND DRYER WITH DISCONNECTING MEANS ABOVE CEILING.
  - PROVIDE RECESSED IN-WALL COMBINATION A/V, POWER, TELECOM BOX EQUAL TO LEGRAND EVOLUTION SERIES 4-GANG WALL BOX CENTERED ON WALL AT 55" AFF. PROVIDE (2) 1/2" AND (1) 3/4" CONDUITS OUT OF THE TOP OF THE WALL BOX TO THE NEAREST CABLE TRAY. PROVIDE (1) 3/4" CONDUIT FOR POWER, PROVIDE (2) 2" CONDUITS OUT OF THE BOTTOM OF THE WALL BOX TO THE NEAREST CABLE TRAY.
  - PROVIDE RECESSED 4-GANG FLOOR BOX WITH (2) DUPLEX RECEPTACLES, (1) TELE/DATA OUTLET, AND (1) SPARE J-BOX. PROVIDE (1) 1/2" FC FOR POWER, (1) 1/2" FC FOR TELE/DATA, AND (1) 1/2" FC AND (1) 2" FC FOR FUTURE. UNDERSLAB FROM CEILING AREA TO FLOOR BOX. NOTE THE (1) 1/2" FC, (1) 1/2" FC, AND (1) 2" FC ARE TO TERMINATE IN 6/6x4/4" J-BOX ABOVE NEAREST ACCESSIBLE CEILING. PROVIDE (1) 1/2" FC AND (2) 1/2" FC'S FROM J-BOX TO NEAREST CABLE TRAY. FLOOR BOX TO BE HUBBELL CFBIG4 OR EQUIVALENT.
  - NOTE: BASE BID IS TO INCLUDE WORK IN LAN/SLAN ROOM 159/158 AS SHOWN ABOVE. CONTRACTOR IS TO PROVIDE ALTERNATE PRICE TO PROVIDE (3) 20AMP CIRCUITS WITH (3) 20V, 20A THIMBLOK RECEPTABLES FOR EACH SERVER RACK, (2) TOTAL SERVER RACKS. PRICE IS TO INCLUDE DELETION OF (4) 30A/2P BREAKERS IN PANEL IGA AND ADDITION OF (4) 20AMP BREAKERS.

- NOTE: BASE BID IS TO INCLUDE WORK IN LAN/SLAN ROOM 159/158 AS SHOWN ABOVE. CONTRACTOR IS TO PROVIDE ALTERNATE PRICE TO PROVIDE (3) 20AMP CIRCUITS WITH (3) 20V, 20A THIMBLOK RECEPTABLES FOR EACH SERVER RACK, (2) TOTAL SERVER RACKS. PRICE IS TO INCLUDE DELETION OF (4) 30A/2P BREAKERS IN PANEL IGA AND ADDITION OF (4) 20AMP BREAKERS.
- NOTE: BASE BID IS TO INCLUDE WORK IN LAN/SLAN ROOM 159/158 AS SHOWN ABOVE. CONTRACTOR IS TO PROVIDE ALTERNATE PRICE TO PROVIDE (3) 20AMP CIRCUITS WITH (3) 20V, 20A THIMBLOK RECEPTABLES FOR EACH SERVER RACK, (2) TOTAL SERVER RACKS. PRICE IS TO INCLUDE DELETION OF (4) 30A/2P BREAKERS IN PANEL IGA AND ADDITION OF (4) 20AMP BREAKERS.
- CONNECT EXHAUST FAN TO NEAREST LIGHT FIXTURE. FAN TO BE ON/OFF CONTROLLED WITH LIGHTS.
- COORDINATE EXACT LAYOUT OF THIS ROOM WITH G.C. AND ALL OTHER TRADES PRIOR TO PROJECT START UP.
- PROVIDE RECESSED FLOOR BOX WITH SINGLE RECEPTACLE EQUIVALENT TO STEEL CITY 664-SC SERIES.



**1 1ST FLOOR POWER PLANS**  
1/8"=1'-0"



**WILSON AIR CENTER NORTH TERMINAL**

**SABER ENGINEERING**  
2923 South Tryon Street, Suite 280  
Charlotte, North Carolina  
Tel: 704.373.0068

MECHANICAL ELECTRICAL PLUMBING  
DEC 7, 2018  
PROJECT NUMBER = C-2130



ARCHITECT  
**THE WILSON GROUP**  
P.O. BOX 6610  
Charlotte, NC 28209  
(704) 331-9747

CIVIL ENGINEER  
**TALBERT, BRIGHT & ELLINGTON**  
3525 WHITEHALL PARK DRIVE, SUITE 210  
Charlotte, NC 28273  
(704) 426-6070 FIRM NO. C-1163

STRUCTURAL ENGINEER  
**STEWART**  
101 N. TRYON ST., SUITE 1400  
Charlotte, NC 28202  
(704) 939-3523 FIRM NO. C-1051

MECHANICAL, ELECTRICAL, PLUMBING & FIRE PROTECTION ENGINEER  
**SABER ENGINEERING**  
2923 S. TRYON ST., SUITE 280  
Charlotte, NC 28203  
(704) 373-0068 FIRM NO. C-2130

LANDSCAPE ARCHITECT  
**URBAN DESIGN PARTNERS**  
1318-BB CENTRAL AVENUE  
Charlotte, NC 28205  
(704) 334-3303 FIRM NO. C-TB0

COMMUNICATIONS INFRASTRUCTURE  
**DB CONSULTING**  
240 LOVES FARM ROAD  
Blacksburg, SC 29702  
(704) 497-7228 FIRM NO. C-TB0

REVISIONS

|                |                  |
|----------------|------------------|
| DATE           | DECEMBER 7, 2018 |
| PROJECT NUMBER | 9197-000         |

SHEET TITLE  
**FIRST FLOOR POWER PLANS**

SHEET NUMBER  
**E-201P**

Order Details

WWW.WILSONGROUP.COM