

**WILSON AIR CENTER
NORTH TERMINAL**

2923 South Tryon Street Suite 280
Charlotte, North Carolina 28203
Tel: 704.373.0059

MECHANICAL ELECTRICAL PLUMBING
DEC 7, 2018
NUMBER = C-2130

ARCHITECT
THE WILSON GROUP
P O BOX 5810
CHARLOTTE, NC 28209
(704) 331-9147

CIVIL ENGINEER
TALBERT, BRIGHT & ELLINGTON
3525 WHITEHALL PARK DRIVE, SUITE 210
CHARLOTTE, NC 28273
(704) 426-6070 FIRM NO. C-1163

STRUCTURAL ENGINEER
STEWART
101 N. TRYON ST., SUITE 1400
CHARLOTTE, NC 28202
(704) 909-3523 FIRM NO. C-1051

MECHANICAL, ELECTRICAL, PLUMBING & FIRE PROTECTION ENGINEER
SABER ENGINEERING
2923 S. TRYON ST., SUITE 280
CHARLOTTE, NC 28209
(704) 373-0059 FIRM NO. C-2130

LANDSCAPE ARCHITECT
URBAN DESIGN PARTNERS
1318-EE CENTRAL AVENUE
CHARLOTTE, NC 28205
(704) 334-3303 FIRM NO. C-1BD

COMMUNICATIONS INFRASTRUCTURE
DB CONSULTING
246 LOVEB FARM ROAD
BLACKSBURG, SC 29702
(704) 497-7228 FIRM NO. C-TBD

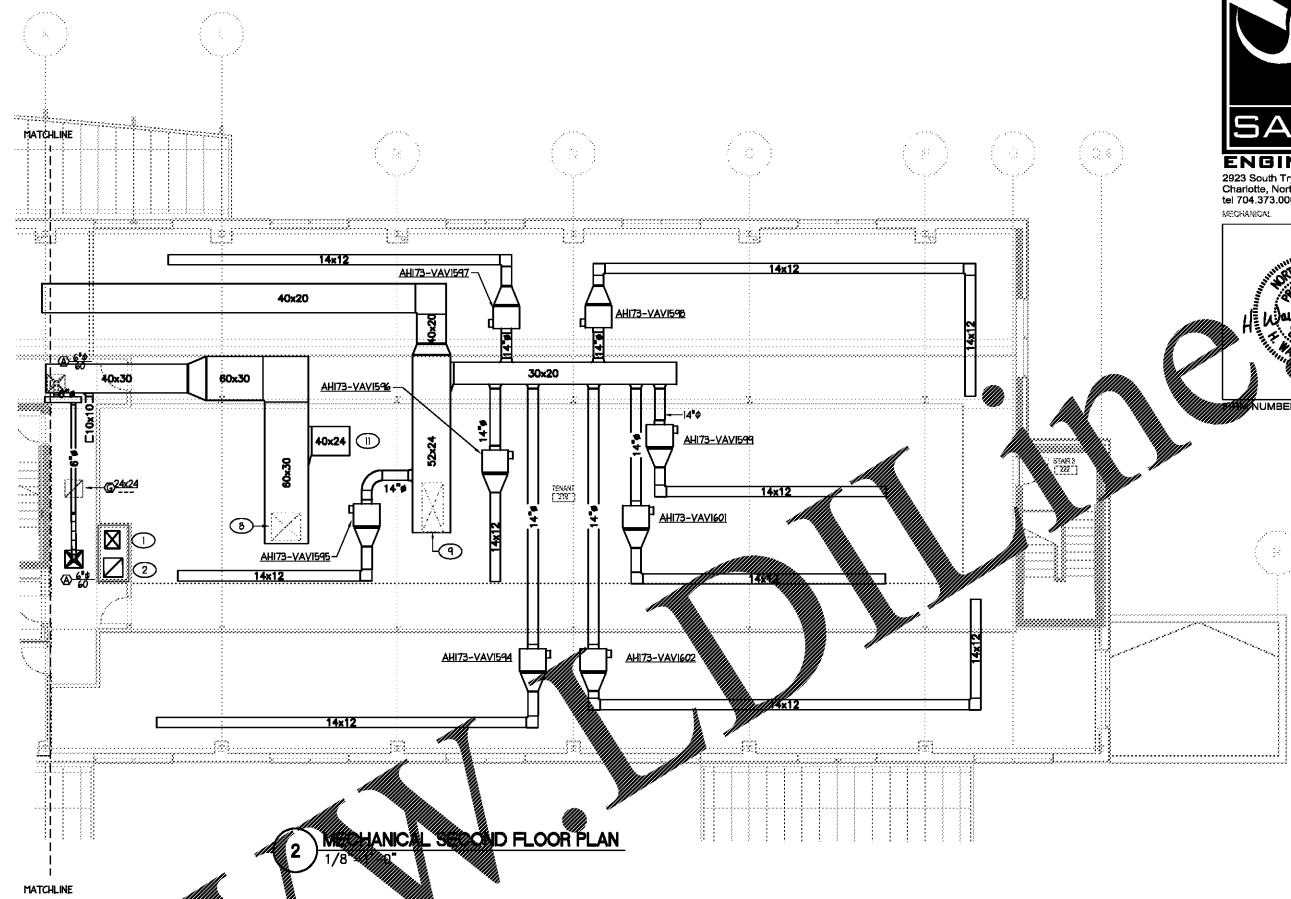
REVISIONS

NO.	DESCRIPTION	DATE

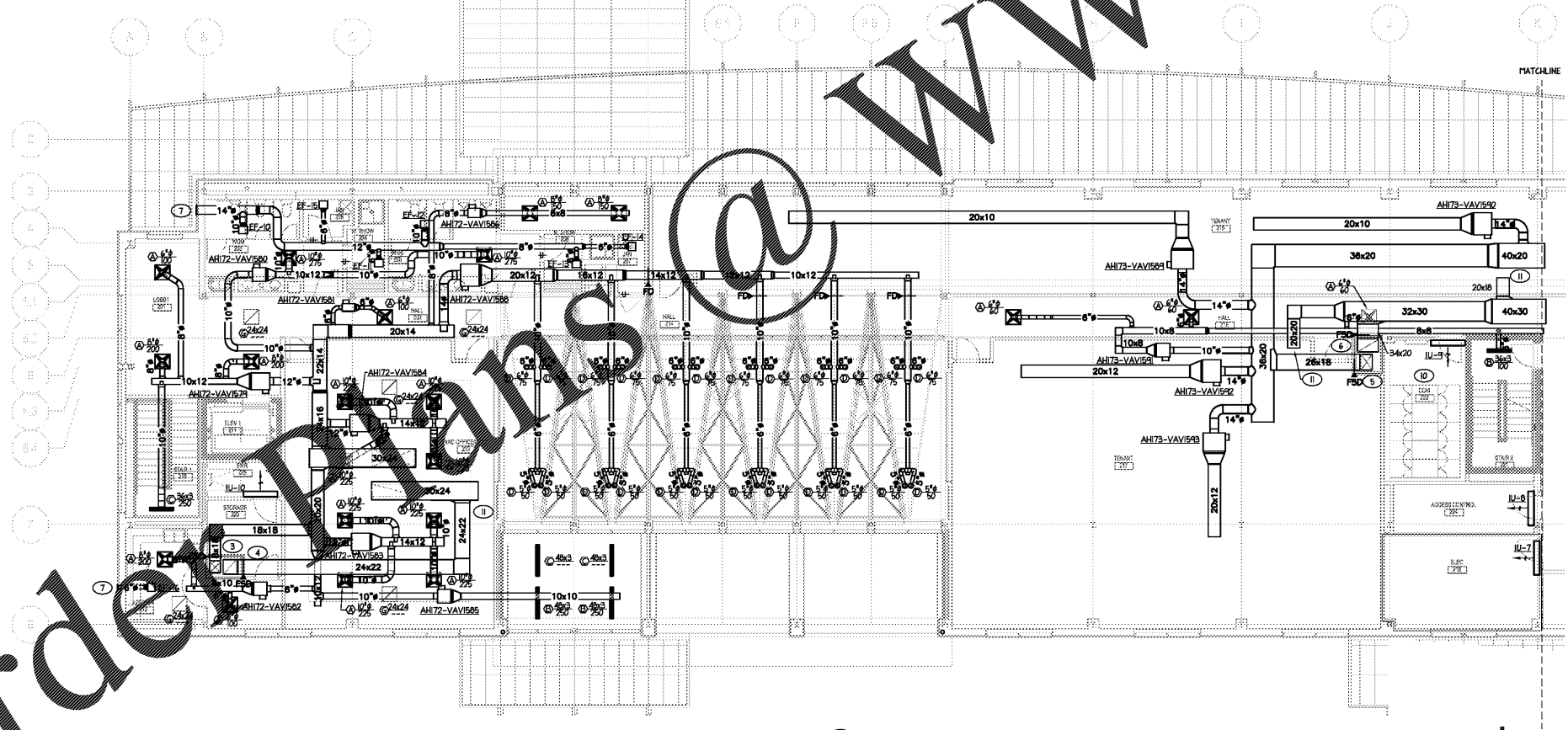
DATE DECEMBER 7, 2018
PROJECT NUMBER 9197-000

SHEET TITLE
SECOND FLOOR PLAN

SHEET NUMBER
M-102



2 MECHANICAL SECOND FLOOR PLAN
1/8" = 1'-0"



1 MECHANICAL SECOND FLOOR PLAN
1/8" = 1'-0"

TAGGED NOTES - THIS SHEET

- 1 24x20 MEDIUM PRESSURE SUPPLY AIR DUCT DOWN TO FIRST FLOOR CEILING.
- 2 26x26 RETURN AIR DUCT DOWN TO FIRST FLOOR CEILING.
- 3 18x18 MEDIUM PRESSURE SUPPLY AIR DUCT DOWN TO FIRST FLOOR CEILING.
- 4 24x22 RETURN AIR DUCT DOWN TO FIRST FLOOR CEILING.
- 5 26x18 MEDIUM PRESSURE SUPPLY AIR DUCT DOWN TO FIRST FLOOR CEILING.
- 6 34x20 RETURN AIR DUCT DOWN TO FIRST FLOOR CEILING.
- 7 EXHAUST DUCT TO 24x24 WALL LOUVER, EQUAL TO RUSKIN ELF6375. BLOCK OFF NON USED AREA. PROVIDE WITH INSECT SCREEN AND B.D.D.
- 8 RETURN AIR DUCT UP TO AHU-173 ON ROOF.
- 9 MEDIUM PRESSURE SUPPLY AIR UP TO AHU13 ON ROOF.
- 10 COMMUNICATION ROOM SPACE TEMPERATURE TO BE MONITORED BY EXISTING AIRPORT METASYS BMS SYSTEM.
- 11 OPEN ENDED RETURN AIR DUCT. COVER OPENING WITH 1/2"x1/2" WIRE MESH.

NOTE:
HVAC SYSTEM UTILIZES PLENUM RETURN. COORDINATE REQUIREMENTS WITH OTHER DISCIPLINES PRIOR TO BEGINNING WORK. NO COMBUSTIBLE MATERIALS SHALL BE ALLOWED IN CEILING PLENUM.

NOTE:
PROVIDE SOUND TRAP AT ALL RETURN AIR GRILLES

Order