

**WILSON AIR CENTER
NORTH TERMINAL**

2923 South Tryon Street Suite 280
Charlotte, North Carolina
tel 704.373.0088

MECHANICAL ELECTRICAL PLUMBING
DEC 7, 2018
PROJECT NUMBER = C-2130

ARCHITECT
THE WILSON GROUP
P O BOX 5510
CHARLOTTE, NC 28226
(704) 331-9747

CIVIL ENGINEER
TALBERT, BRIGHT & ELLINGTON
3525 WHITEHALL PARK DRIVE, SUITE 210
CHARLOTTE, NC 28273
(704) 426-8070 FIRM NO. C-1163

STRUCTURAL ENGINEER
STEWART
101 N. TRYON ST., SUITE 1400
CHARLOTTE, NC 28202
(704) 909-3523 FIRM NO. C-1061

MECHANICAL, ELECTRICAL, PLUMBING & FIRE PROTECTION ENGINEER
SABER ENGINEERING
2923 S. TRYON ST., SUITE 280
CHARLOTTE, NC 28203
(704) 373-0088 FIRM NO. C-2130

LANDSCAPE ARCHITECT
URBAN DESIGN PARTNERS
1318-E8 CENTRAL AVENUE
CHARLOTTE, NC 28205
(704) 334-3303 FIRM NO. C-176D

COMMUNICATIONS INFRASTRUCTURE
DB CONSULTING
246 LONES FARM ROAD
BLACKSBURG, SC 29702
(704) 497-7228 FIRM NO. C-176D

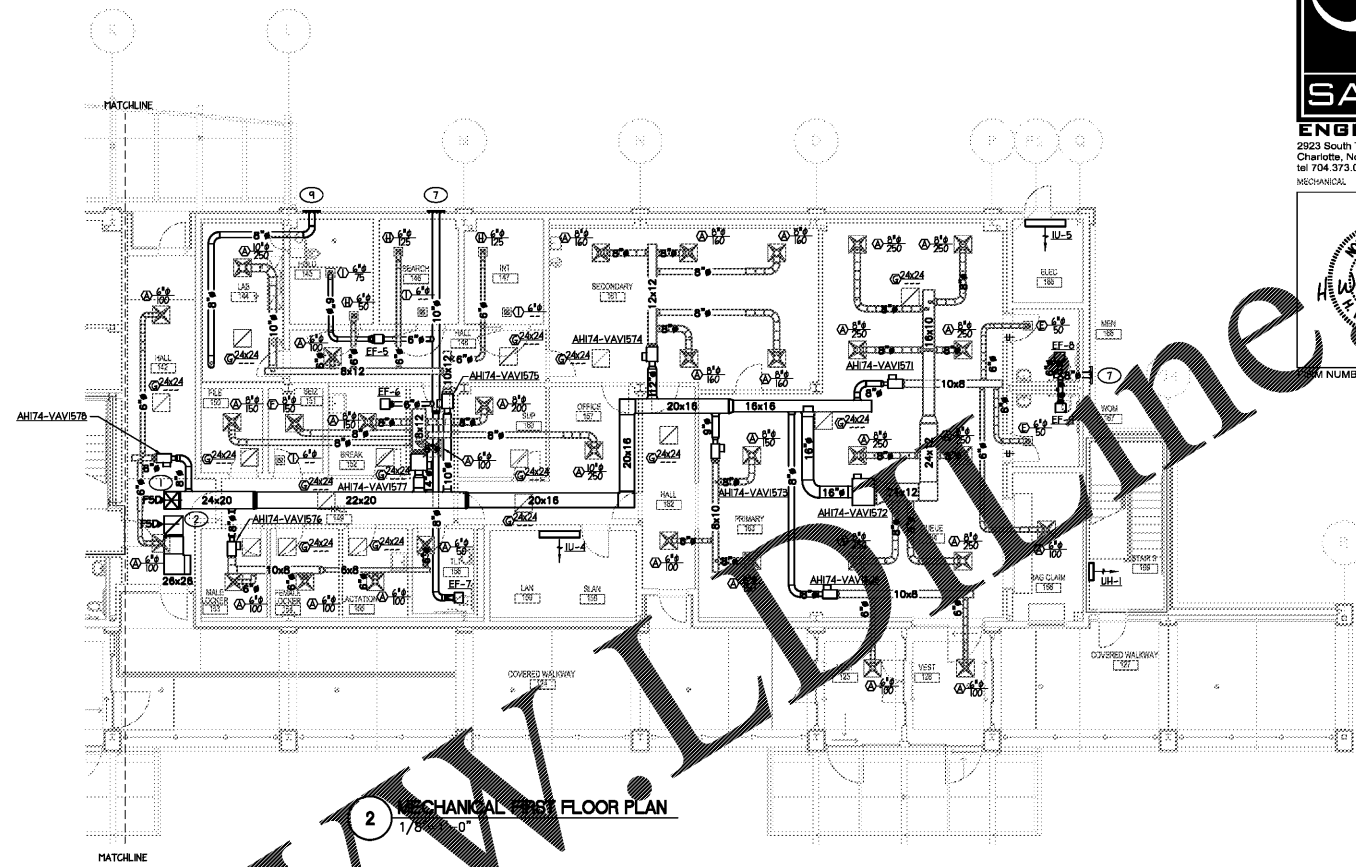
REVISIONS

DATE DECEMBER 7, 2018
PROJECT NUMBER 9197-000

SHEET TITLE
FIRST FLOOR PLAN

SHEET NUMBER
M-101

CEP SPACE NOTE:
ANY OPENING GREATER THAN 1/8" SQUARE INCHES, LESS THAN 18 FEET FROM THE GROUND, AND/OR 14 FEET FROM ANOTHER STRUCTURE, SHALL BE COVERED BY 1) 1/2" DIAMETER STEEL BARS WELDED 6-INCHES ON CENTER BOTH VERTICALLY AND HORIZONTALLY, OR 2) 1/4" GAUGE EXPANDED METER DIAMOND MESH.
(NOTE: THESE OPENINGS MUST BE MONITORED BY IDS.)



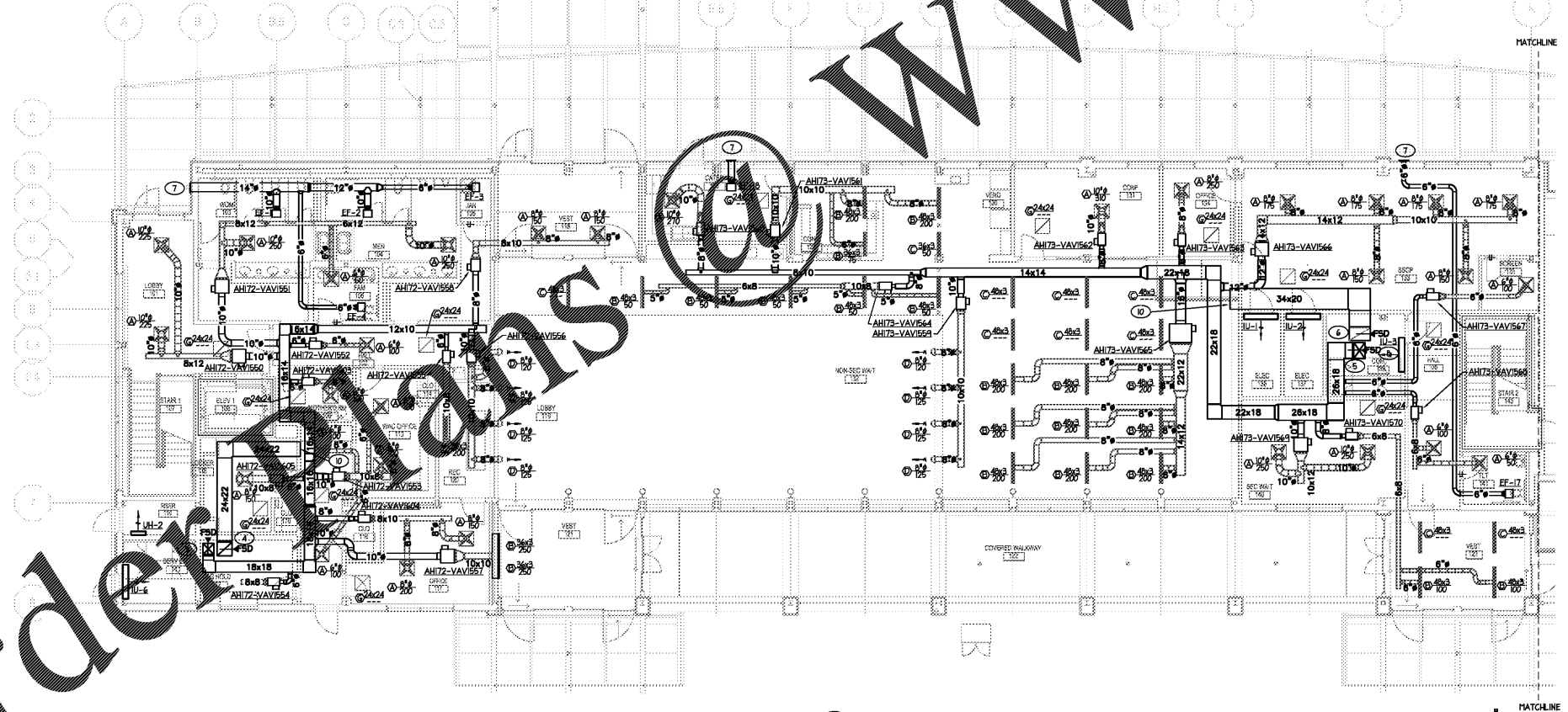
2 MECHANICAL FIRST FLOOR PLAN
1/8" = 1'-0"

TAGGED NOTES - THIS SHEET

- 1 24x20 MEDIUM PRESSURE SUPPLY AIR DUCT UP TO SECOND FLOOR.
- 2 24x26 RETURN AIR DUCT UP TO SECOND FLOOR.
- 3 18x18 MEDIUM PRESSURE SUPPLY AIR DUCT UP TO SECOND FLOOR.
- 4 22x22 RETURN AIR DUCT UP TO SECOND FLOOR.
- 5 26x18 MEDIUM PRESSURE SUPPLY AIR DUCT UP TO SECOND FLOOR.
- 6 34x20 RETURN AIR DUCT UP TO SECOND FLOOR.
- 7 EXHAUST DUCT TO 24x24 HALL LOUVER, EQUAL TO RUSKIN ELF6376, BLOCK OFF NON USED AREA. PROVIDE WITH INSECT SCREEN AND B.D.D. COORDINATE EXACT LOCATION WITH ARCHITECTURAL PLANS.
- 8 COMMUNICATION ROOM SPACE TEMPERATURE TO BE MONITORED BY EXISTING AIRPORT METASTYS BMS SYSTEM.
- 9 EXHAUST DUCT FOR FUME HOOD TO 24x24 HALL LOUVER EQUAL TO RUSKIN ELF6376, BLOCK OFF NON USED AREA. PROVIDE WITH INSECT SCREEN AND B.D.D. VERIFY DUCT SIZE AND TYPE ACCORDING TO MANUFACTURER REQUIREMENTS.
- 10 OPEN ENDED RETURN AIR DUCT IN PLENUM SPACE. COVER OPENING WITH 1/4\"

NOTE:
HVAC SYSTEM UTILIZES PLENUM RETURN. COORDINATE REQUIREMENTS WITH OTHER DISCIPLINES PRIOR TO BEGINNING WORK. NO COMBUSTIBLE MATERIALS SHALL BE ALLOWED IN CEILING PLENUM.

NOTE:
PROVIDE SOUND TRAP AT ALL RETURN AIR GRILLES



1 MECHANICAL FIRST FLOOR PLAN
1/8" = 1'-0"

Order Items