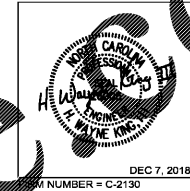


WILSON AIR CENTER

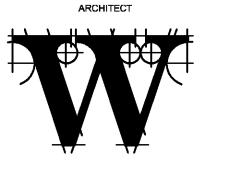
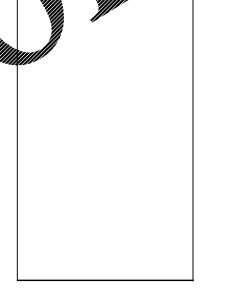
NORTH TERMINAL

2923 South Tryon Street Suite 280
Charlotte, North Carolina 28203
Tel 704.373.0058



DEC 7, 2018
PROJECT NUMBER = C-2130

HCD 000008
CHARLOTTE-DILME AS
NATIONAL ASST
5320 WARRIS FIELD RD
CHARLOTTE, NC 28217



ARCHITECT
P O BOX 5510
CHARLOTTE, NC 28299
(704) 331-9147

CIVIL ENGINEER
TALBERT, BRIGHT &
ELLINGTON
3525 WHITEHALL PARK DRIVE, SUITE 210
CHARLOTTE, NC 28273
(704) 426-8070 FIRM NO. C-1163

STRUCTURAL ENGINEER
STEWART
101 N. TRYON ST., SUITE 1400
CHARLOTTE, NC 28202
(704) 909-3523 FIRM NO. C-1051

MECHANICAL, ELECTRICAL, PLUMBING &
FIRE PROTECTION ENGINEER
SABER ENGINEERING
2923 S. TRYON ST., SUITE 280
CHARLOTTE, NC 28203
(704) 373-0058 FIRM NO. C-2130

LANDSCAPE ARCHITECT
URBAN DESIGN
PARTNERS
1318-E8 CENTRAL AVENUE
CHARLOTTE, NC 28205
(704) 334-3303 FIRM NO. C-130

COMMUNICATIONS INFRASTRUCTURE
DB CONSULTING
346 LONES FARM ROAD
BLACKSBURG, SC 29702
(704) 497-7228 FIRM NO. C-1180

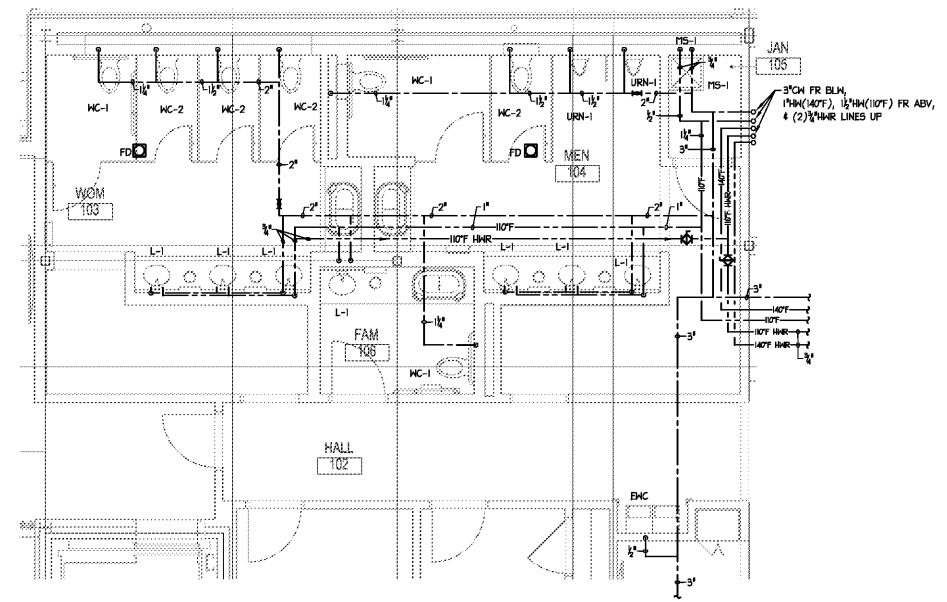
REVISIONS

NO.	DESCRIPTION	DATE

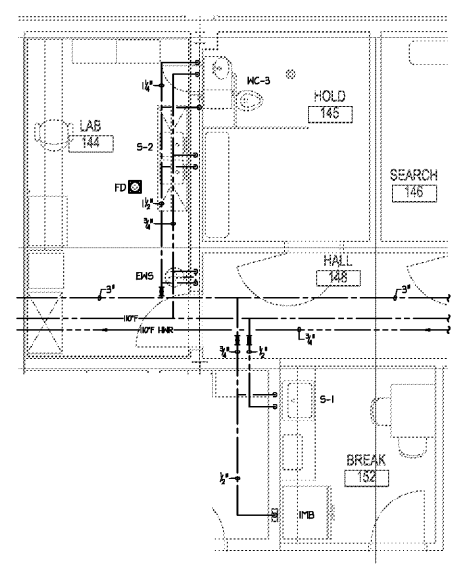
DATE DECEMBER 7, 2018
PROJECT NUMBER 9197-000

SHEET TITLE
ENLARGED
DETAIL
PLANS

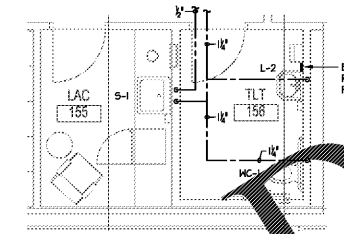
SHEET NUMBER
P-301



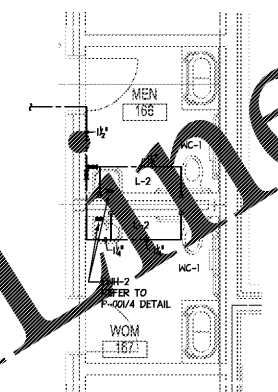
1 PLUMBING ENLARGED DETAIL
1/4" = 1'-0" PUBLIC TOILET



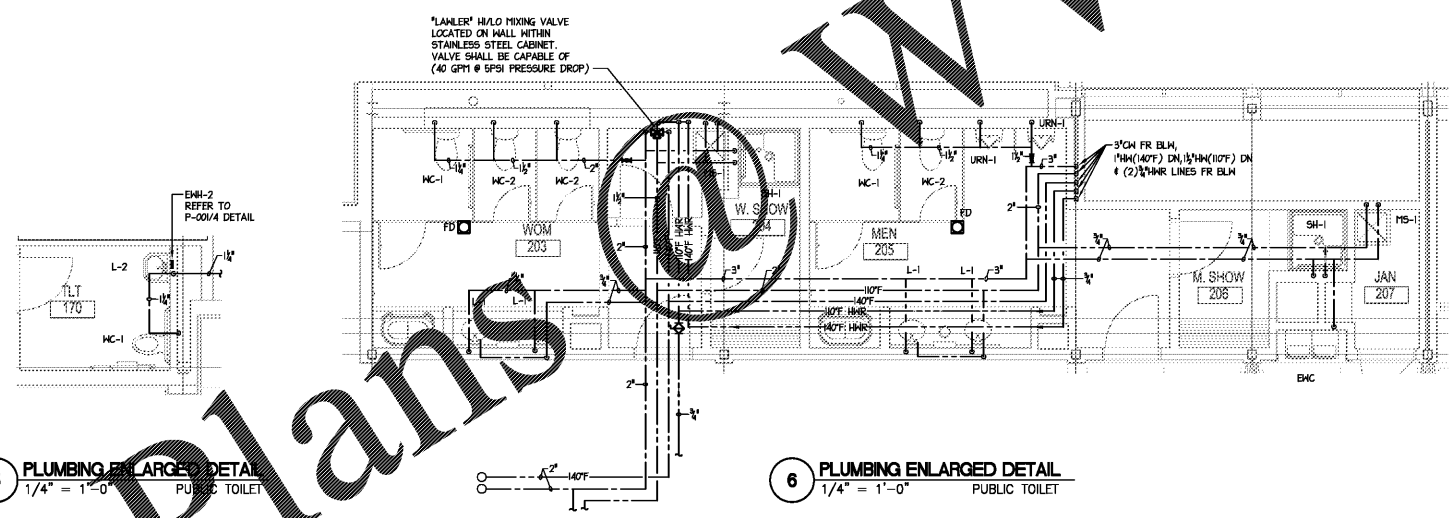
2 PLUMBING ENLARGED DETAIL
1/4" = 1'-0" TOILET/BREAK AREA



3 PLUMBING ENLARGED DETAIL
1/4" = 1'-0" PUBLIC TOILET



4 PLUMBING ENLARGED DETAIL
1/4" = 1'-0" PUBLIC TOILET



5 PLUMBING ENLARGED DETAIL
1/4" = 1'-0" PUBLIC TOILET

6 PLUMBING ENLARGED DETAIL
1/4" = 1'-0" PUBLIC TOILET

Order Plans