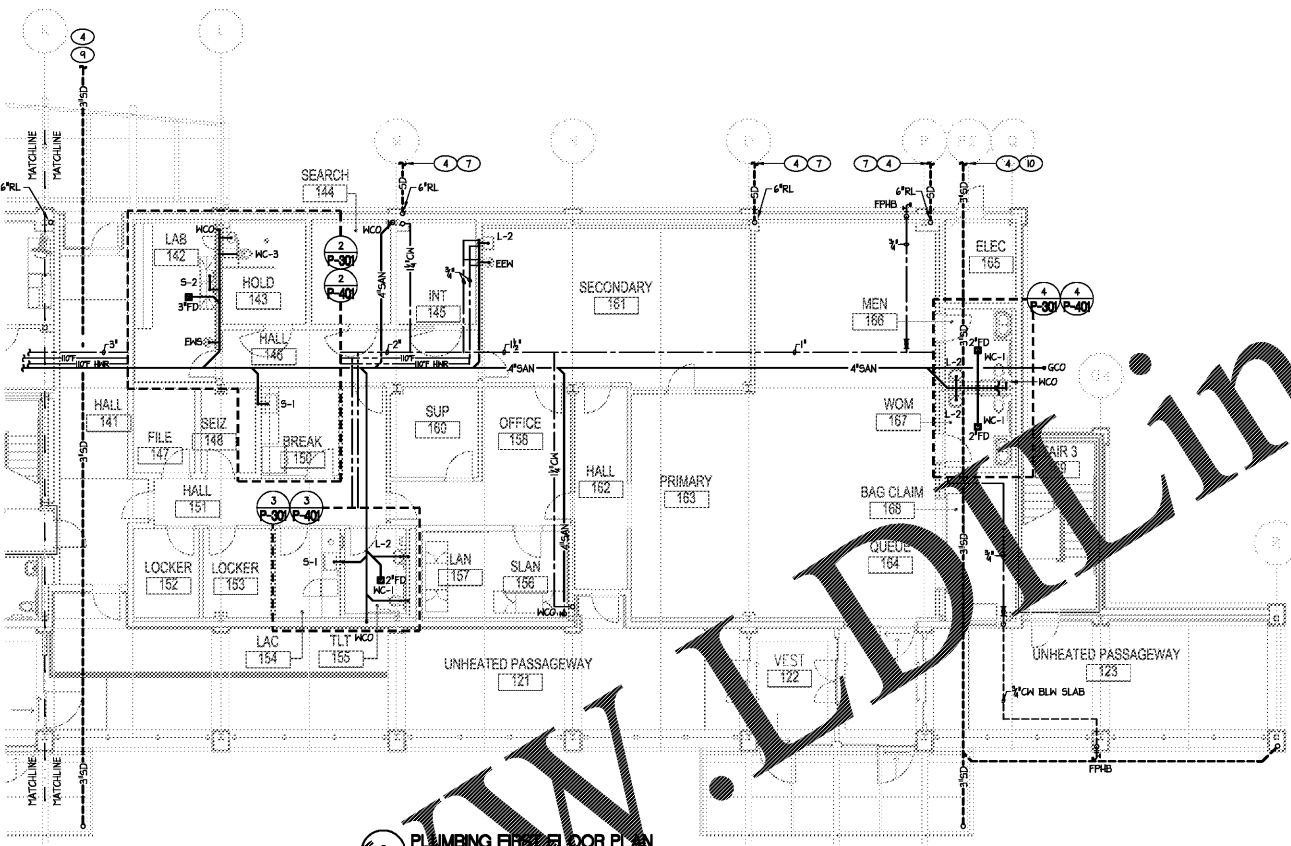


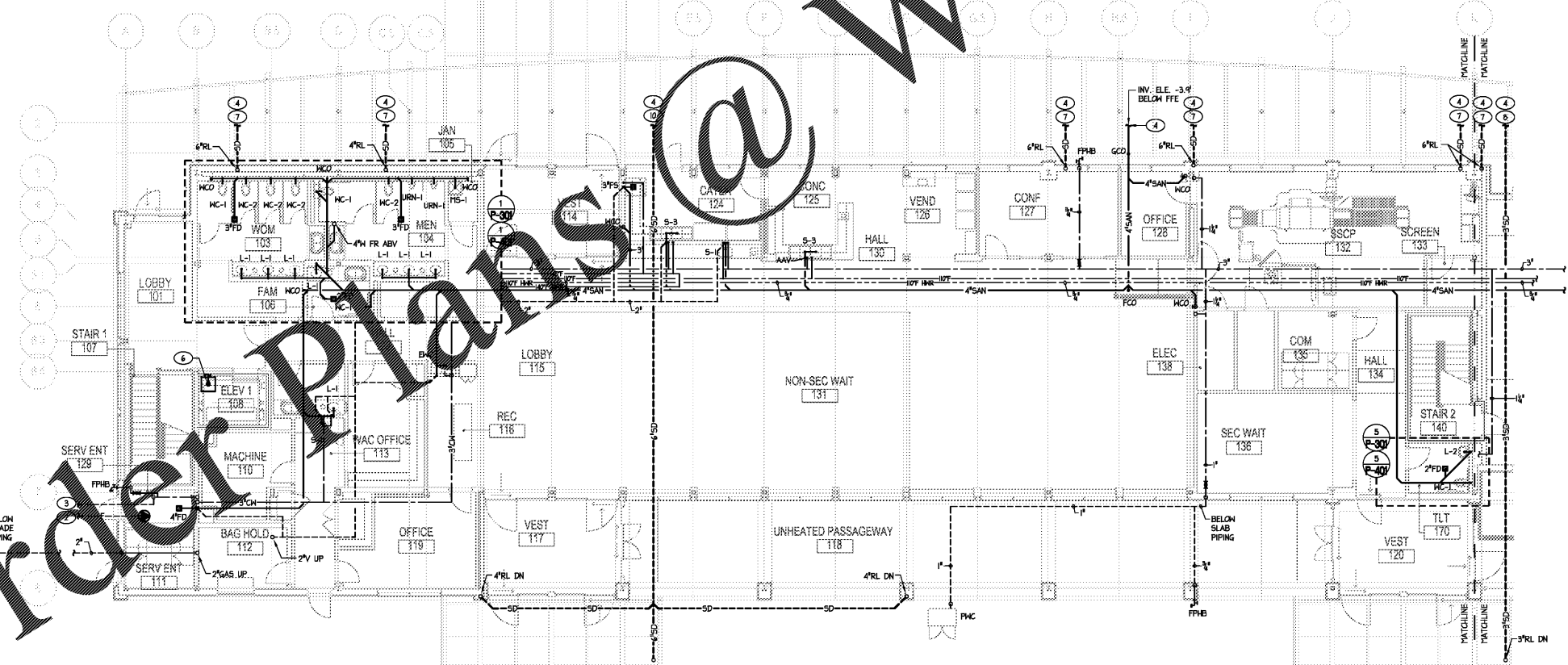
BUILDING GAS DEMAND	
DESCRIPTION	FEH
AHU-172	350
AHU-173	500
AHU-174	250
GWH-1	1,991.999
TOTAL FEH	3094.999

PIPE SIZING BASED ON A 300 FT DEVELOPED LENGTH, AT AN INLET PRESSURE OF 2.0 PSIG PER THE 2012 INTERNATIONAL FUEL GAS CODE.

- KEYED NOTES THIS SHEET**
- 1 GAS METER & REGULATOR ASSEMBLY PROVIDED BY LOCAL GAS SUPPLIER. TOTAL ESTIMATED LOAD = 3000 FEH @ 2.0 PSIG. TOTAL DEVELOPED SYSTEM LENGTH = 300 FT. P/C/G TO COORDINATE WITH GAS COMPANY AS REQUIRED FOR A COMPLETE CODE COMPLIANT INSTALLATION. REFER TO CIVIL SITE UTILITY PLANS FOR EXACT LOCATION.
 - 2 6" FIRE FINAL SIZE TO BE HYDRAULICALLY CALCULATED & DETERMINED BY A LICENSED SPRINKLER CONTRACTOR AND/OR FIRE PROTECTION ENGINEER. SEE CIVIL PLANS FOR CONTINUATION.
 - 3 3" DOMESTIC (50 GPM @ 60PSI) SEE CIVIL PLANS FOR CONTINUATION.
 - 4 REFER TO CIVIL SITE UTILITY PLANS FOR CONTINUATION.
 - 5 3" CH UP TO 4" FR DOMESTIC BOOSTER PUMP ON 2ND FL. LEVEL ABOVE.
 - 6 *STANCOR, OIL MINDER* ELEVATOR SLIP PUMP LOCATED IN FIT. ROUTE 2" DISCHARGE TO 4" FID IN WATER RISER ROOM & TERMINATE PER CODE. SEE ARCH/STRUC PLANS FOR EXACT FIT LOCATION.
 - 7 INVERT ELEVATION -1.6' BELOW FFE.
 - 8 INVERT ELEVATION -2.5' BELOW FFE.
 - 9 INVERT ELEVATION -2.5' BELOW FFE.
 - 10 INVERT ELEVATION -3.0' BELOW FFE.



2 PLUMBING FIRST FLOOR PLAN
1/8" = 1'-0"



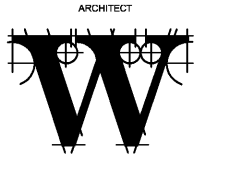
1 PLUMBING FIRST FLOOR PLAN
1/8" = 1'-0"

SPRINKLER HEAD LAYOUT - CONTRACTOR TO REFER TO ARCHITECTURAL CEILING LAYOUT FOR SPECIFIC SPRINKLER HEAD LOCATIONS. THERE ARE SOME AREAS WHERE SPECIFIC LAYOUT IS REQUIRED/DESIRED BECAUSE OF CEILING MATERIALS AND/OR AESTHETICS. CONTRACTOR MUST LOCATE SPRINKLER HEADS AS INDICATED ON ARCHITECTURAL CEILING PLANS. IF CONTRACTOR FINDS NON-COMPLIANT LAYOUT, THEY MUST CONTACT ARCHITECT FOR APPROVAL PRIOR TO PROCEEDING.



WILSON AIR CENTER
NORTH TERMINAL

SABER ENGINEERING
2923 South Tryon Street Suite 280
Charlotte, North Carolina 28217
tel 704.373.0058
MECHANICAL ELECTRICAL PLUMBING
DEC 7, 2018
PROJECT NUMBER = C-2130



THE WILSON GROUP
P O BOX 5510
CHARLOTTE, NC 28299
(704) 331-9747

CIVIL ENGINEER
TALBERT, BRIGHT & ELLINGTON
3525 WHITEHALL PARK DRIVE, SUITE 210
CHARLOTTE, NC 28273
(704) 426-8070 FIRM NO. C-1163

STRUCTURAL ENGINEER
STEWART
101 N. TRYON ST., SUITE 1400
CHARLOTTE, NC 28202
(704) 909-3923 FIRM NO. C-1051

MECHANICAL, ELECTRICAL, PLUMBING & FIRE PROTECTION ENGINEER
SABER ENGINEERING
2923 S. TRYON ST., SUITE 280
CHARLOTTE, NC 28203
(704) 373-0058 FIRM NO. C-2130

LANDSCAPE ARCHITECT
URBAN DESIGN PARTNERS
1318-E8 CENTRAL AVENUE
CHARLOTTE, NC 28205
(704) 334-3303 FIRM NO. C-130

COMMUNICATIONS INFRASTRUCTURE
DB CONSULTING
246 LONES FARM ROAD
BLACKSBURG, SC 29702
(704) 497-7228 FIRM NO. C-178D

REVISIONS

NO.	DATE	DESCRIPTION

DATE DECEMBER 7, 2018
PROJECT NUMBER 9197-000

SHEET TITLE
FIRST FLOOR PLAN

SHEET NUMBER
P-101

Order Plans @ www.lidline.com