

**WILSON AIR CENTER**  
**NORTH TERMINAL**

CHARLOTTE-DORRIS  
 INTERNATIONAL AIRPORT  
 5327 WILSONS FIELD DRIVE  
 CHARLOTTE, NC 28208



ARCHITECT  
**THE WILSON GROUP**  
 ARCHITECTS

PO BOX 5510 CHARLOTTE, NC 28229  
 704-331-8747 • www.wilgrouparch.com

CIVIL ENGINEER  
**TALBERT, BRIGHT & ELLINGTON**  
 3525 WHITEHALL PARK DRIVE, SUITE 210  
 CHARLOTTE, NC 28273  
 (704) 425-8070 FIRM NO.: C-1183

MECHANICAL, ELECTRICAL, PLUMBING &  
 FIRE PROTECTION ENGINEER  
**SABER ENGINEERING**  
 2923 S. TRYON ST., SUITE 280  
 CHARLOTTE, NC 28203  
 (704) 373-0068 FIRM NO.: C-2130

LANDSCAPE ARCHITECT  
**URBAN DESIGN PARTNERS**  
 1315-BB CENTRAL AVENUE  
 CHARLOTTE, NC 28202  
 (704) 334-3303 FIRM NO.: C-TBD

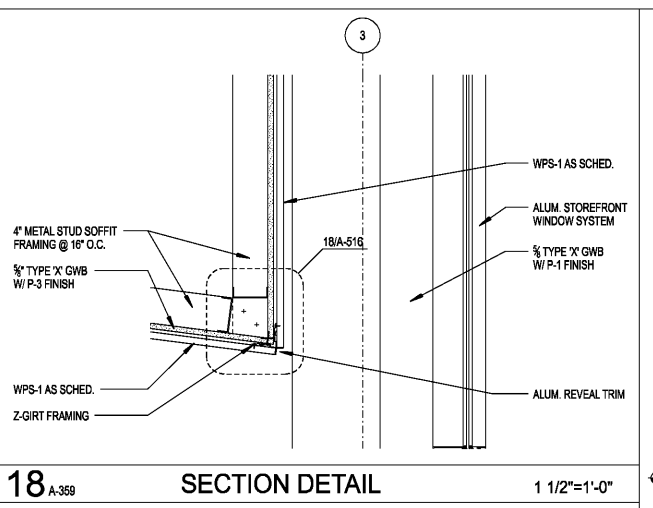
COMMUNICATIONS INFRASTRUCTURE  
**DB CONSULTING**  
 246 LOVES FARM ROAD  
 BLACKSBURG, SC 29702  
 (704) 497-7228 FIRM NO.: C-TBD

REVISIONS

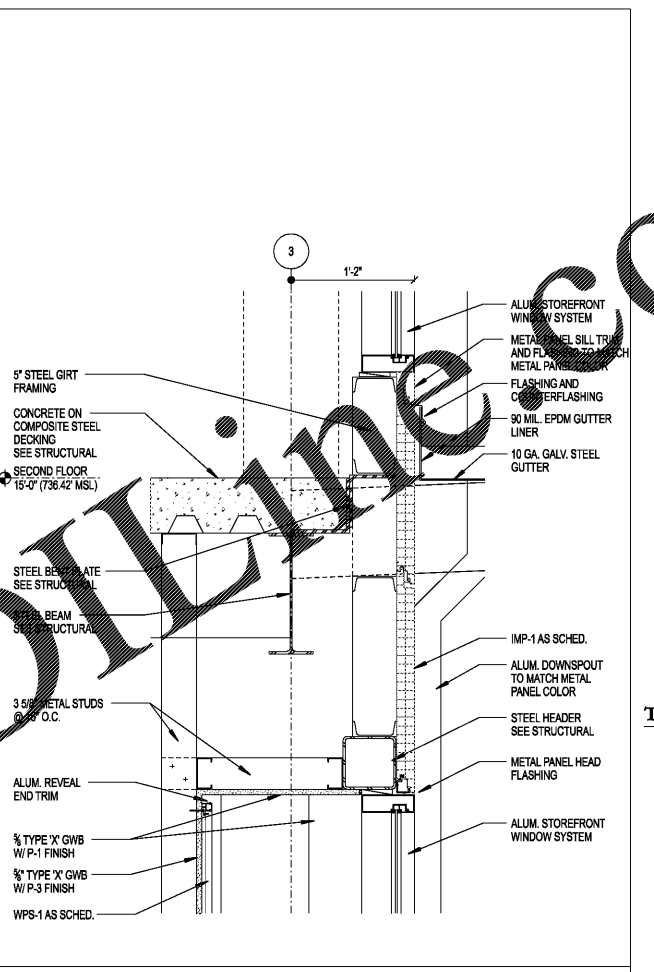
DATE DECEMBER 7, 2018  
 PROJECT NUMBER 9197-000

SHEET TITLE  
**SECTION DETAILS**

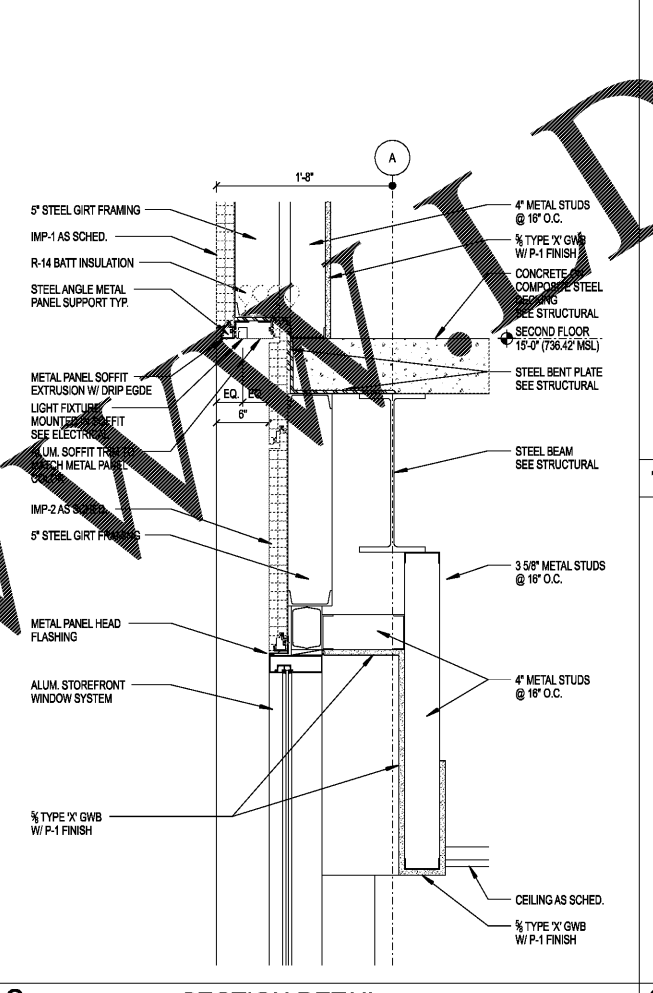
SHEET NUMBER  
**A-513**



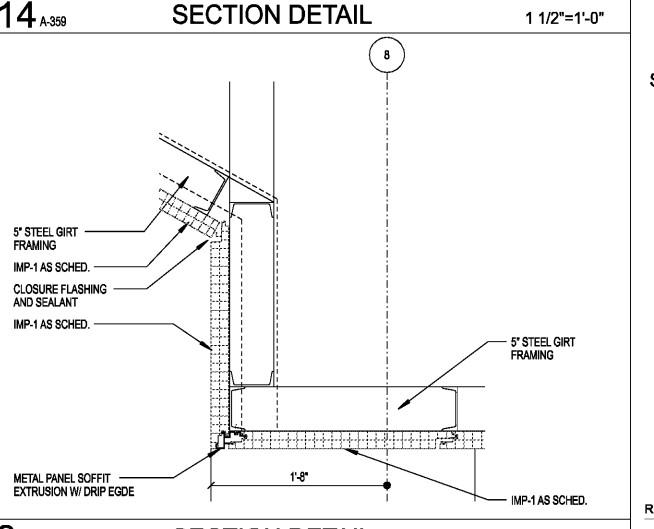
18 A-359 SECTION DETAIL 1 1/2"=1'-0"



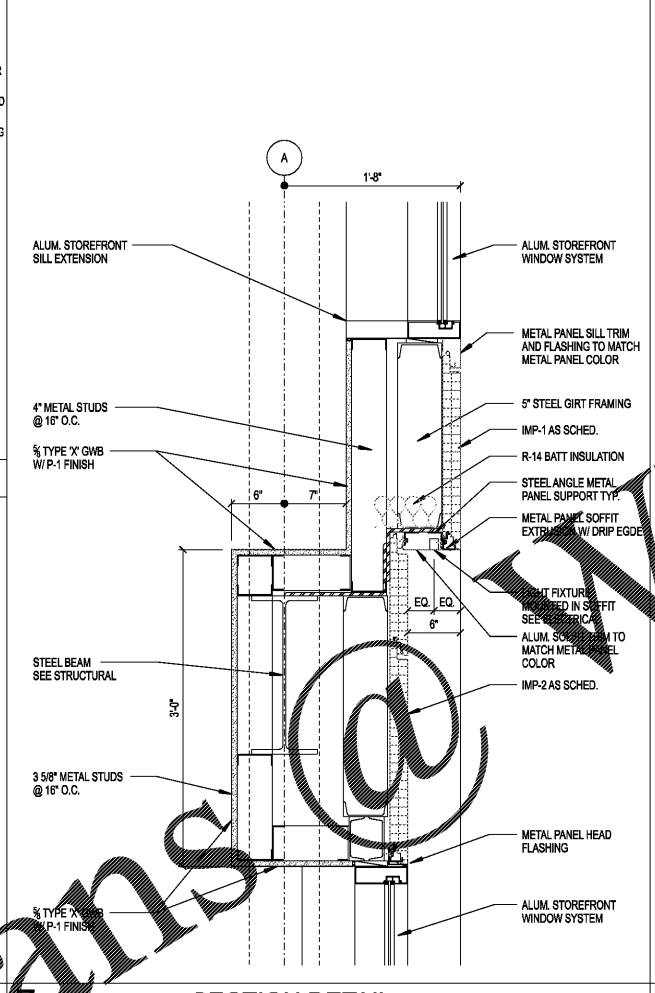
14 A-359 SECTION DETAIL 1 1/2"=1'-0"



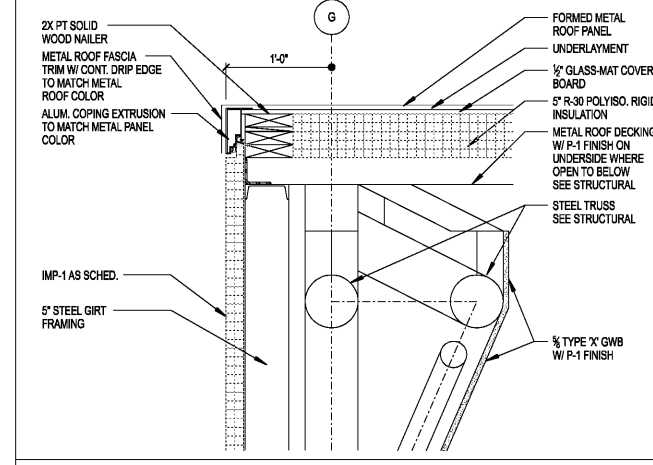
8 A-352 SECTION DETAIL 1 1/2"=1'-0"



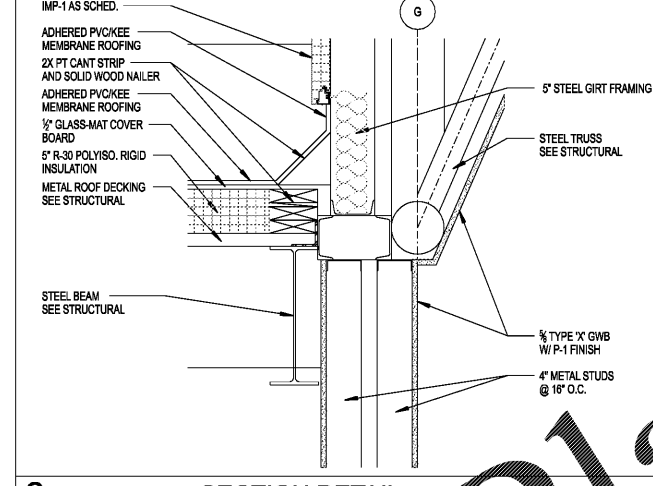
9 A-352 SECTION DETAIL 1 1/2"=1'-0"



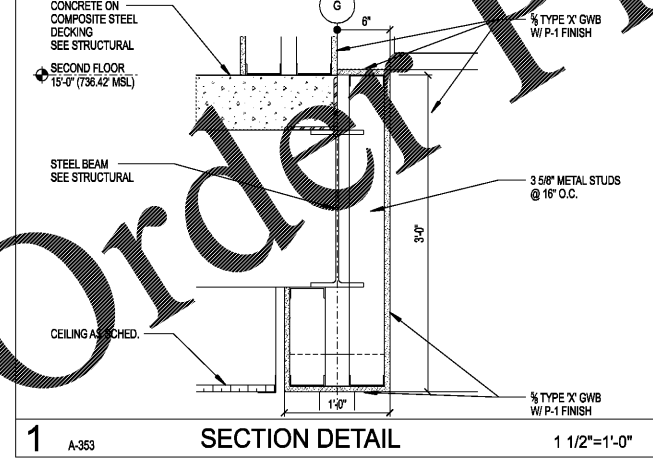
7 A-355 SECTION DETAIL 1 1/2"=1'-0"



11 A-353 SECTION DETAIL 1 1/2"=1'-0"



6 A-353 SECTION DETAIL 1 1/2"=1'-0"



1 A-353 SECTION DETAIL 1 1/2"=1'-0"

Order Plans @ [www.wilgrouparch.com](http://www.wilgrouparch.com)