

**WILSON AIR CENTER
NORTH TERMINAL**

CHARLOTTE-DORRIS
INTERNATIONAL AIRPORT
5327 WOODS FIELD DRIVE
CHARLOTTE, NC 28209



THE WILSON GROUP
- ARCHITECTS -

PO BOX 5510 CHARLOTTE, NC 28299
704-331-8747 • www.twgarchitects.com

CIVIL ENGINEER
TALBERT, BRIGHT & ELLINGTON

3525 WHITEHALL PARK DRIVE, SUITE 210
CHARLOTTE, NC 28273
(704) 425-8070 FIRM NO.: C-1183

STRUCTURAL ENGINEER
STEWART

101 N. TRYON ST., SUITE 1400
CHARLOTTE, NC 28202
(704) 389-3523 FIRM NO.: C-1051

MECHANICAL, ELECTRICAL, PLUMBING &
FIRE PROTECTION ENGINEER
SABER ENGINEERING

2923 S. TRYON ST., SUITE 280
CHARLOTTE, NC 28203
(704) 373-0068 FIRM NO.: C-2130

LANDSCAPE ARCHITECT
URBAN DESIGN PARTNERS

1315-EB CENTRAL AVENUE
CHARLOTTE, NC 28205
(704) 334-3303 FIRM NO. C-TBD

COMMUNICATIONS INFRASTRUCTURE
DB CONSULTING

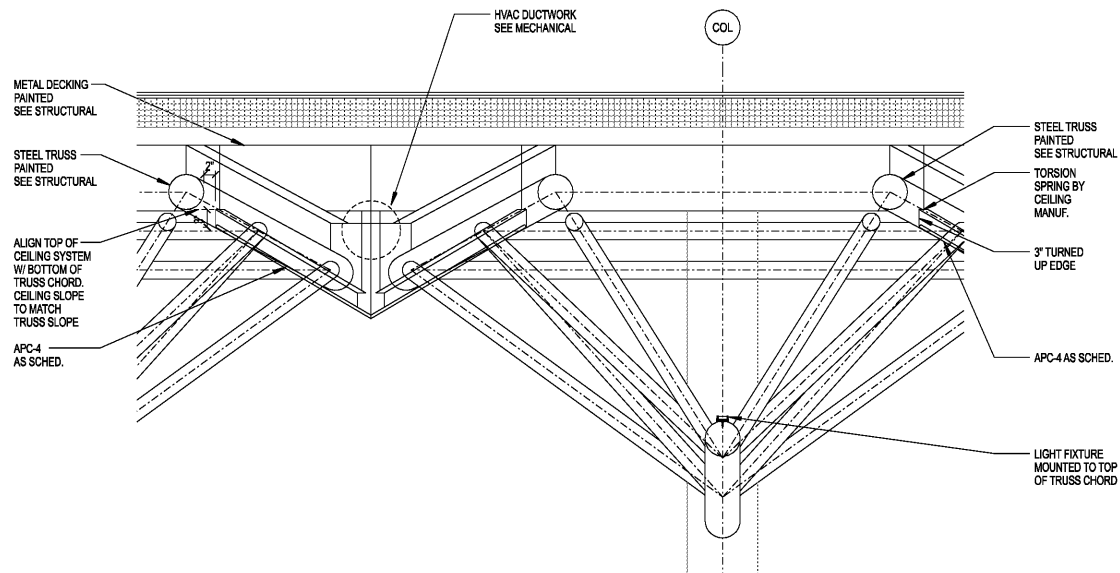
248 LOVES FARM ROAD
BLACKSBURG, SC 29702
(704) 497-7228 FIRM NO. C-TBD

REVISIONS

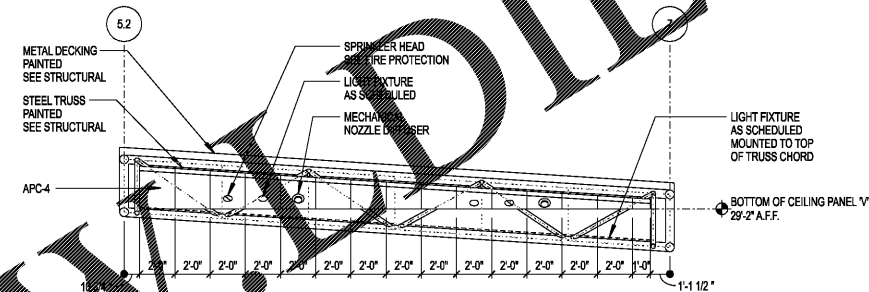
DATE DECEMBER 7, 2018
PROJECT NUMBER 9197-000

SHEET TITLE
**ENLARGED
RCP DETAILS**

SHEET NUMBER
A-425

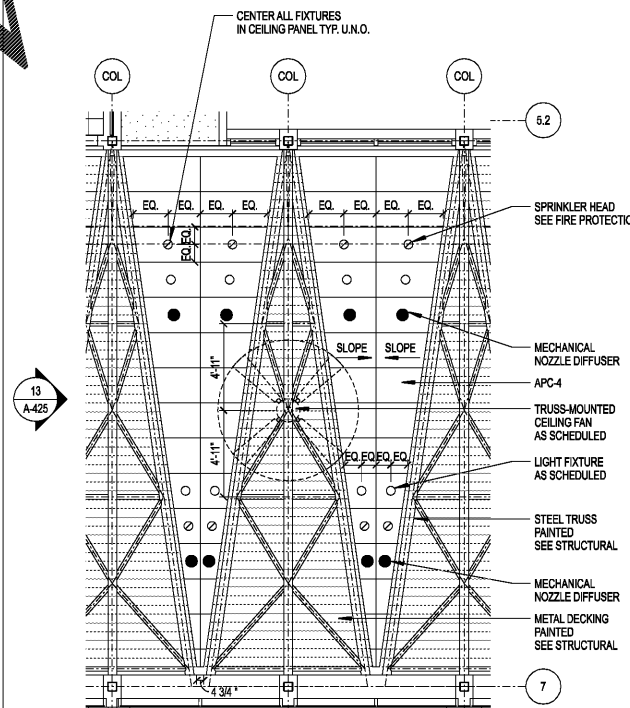


11 A-425 ENLARGED CEILING SECTION 1"=1'-0"

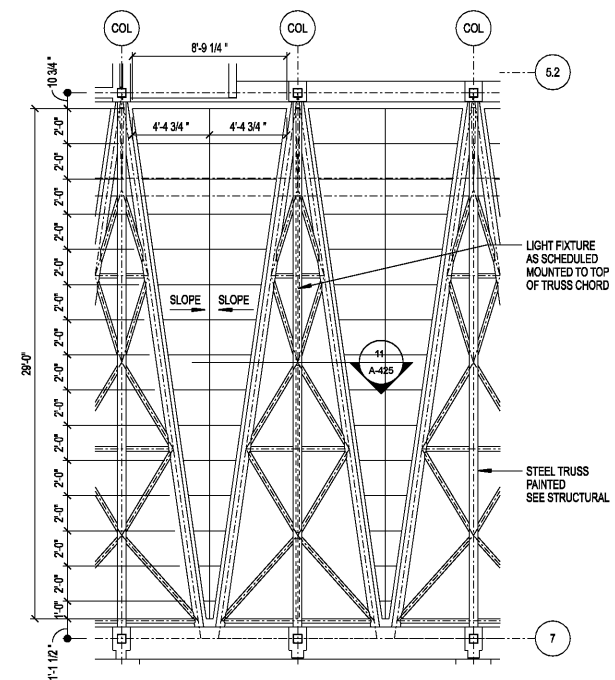


13 ENLARGED CEILING ELEVATION 1/4"=1'-0"

CEILING LEGEND	
SYMBOL	DESCRIPTION
○	RECESSED CAN LIGHT
◻	RECESSED SQUARE LIGHT
▬	6" WIDE LINEAR SLOT LIGHT
○	PENDANT LIGHT
○	WALL-MOUNTED SCONCE/RECESSED LIGHT
○	NEAR LIGHT FIXTURE
○	SPRINKLER HEAD
○	MECHANICAL NOZZLE DIFFUSER
○	MECHANICAL NOZZLE DIFFUSER
○	HATCHED CEILING PANEL DENOTES METAL PANELS TO MATCH ADJACENT HVAC GRILLES IN COLOR AND TEXTURE. 18 GA MIN. TYPICAL 1/2" HVAC SLOTS. CONTRACTOR TO SUBMIT SAMPLES TO ARCHITECT FOR VERIFICATION AND APPROVAL PRIOR TO PROCUREMENT AND INSTALLATION.
○	APC-1 24" X 24" ACOUSTICAL PANEL CEILING
○	APC-2 24" X 54" ACOUSTICAL PANEL CEILING
○	GWB CEILING



3 A-424 ENLARGED RCP 1"=1'-0"



4 A-424 ENLARGED CEILING PLAN 1"=1'-0"

Order Plans