



THE WILSON GROUP
ARCHITECTS

PO BOX 5510 CHARLOTTE, NC 28299
704-331-8747 • www.twgarchitects.com

CIVIL ENGINEER
TALBERT, BRIGHT &
ELLINGTON

3525 WHITEHALL PARK DRIVE, SUITE 210
CHARLOTTE, NC 28273
(704) 425-8070 FIRM NO.: C-1183

STRUCTURAL ENGINEER
STEWART

101 N. TRYON ST., SUITE 1400
CHARLOTTE, NC 28202

(704) 889-3523 FIRM NO.: C-1051

MECHANICAL, ELECTRICAL, PLUMBING &
FIRE PROTECTION ENGINEER
SABER ENGINEERING

2923 S. TRYON ST., SUITE 200
CHARLOTTE, NC 28203
(704) 373-0088 FIRM NO.: C-2130

LANDSCAPE ARCHITECT
URBAN DESIGN
PARTNERS

1315-EB CENTRAL AVENUE
CHARLOTTE, NC 28205
(704) 334-3303 FIRM NO.: C-TBD

COMMUNICATIONS INFRASTRUCTURE
DB CONSULTING

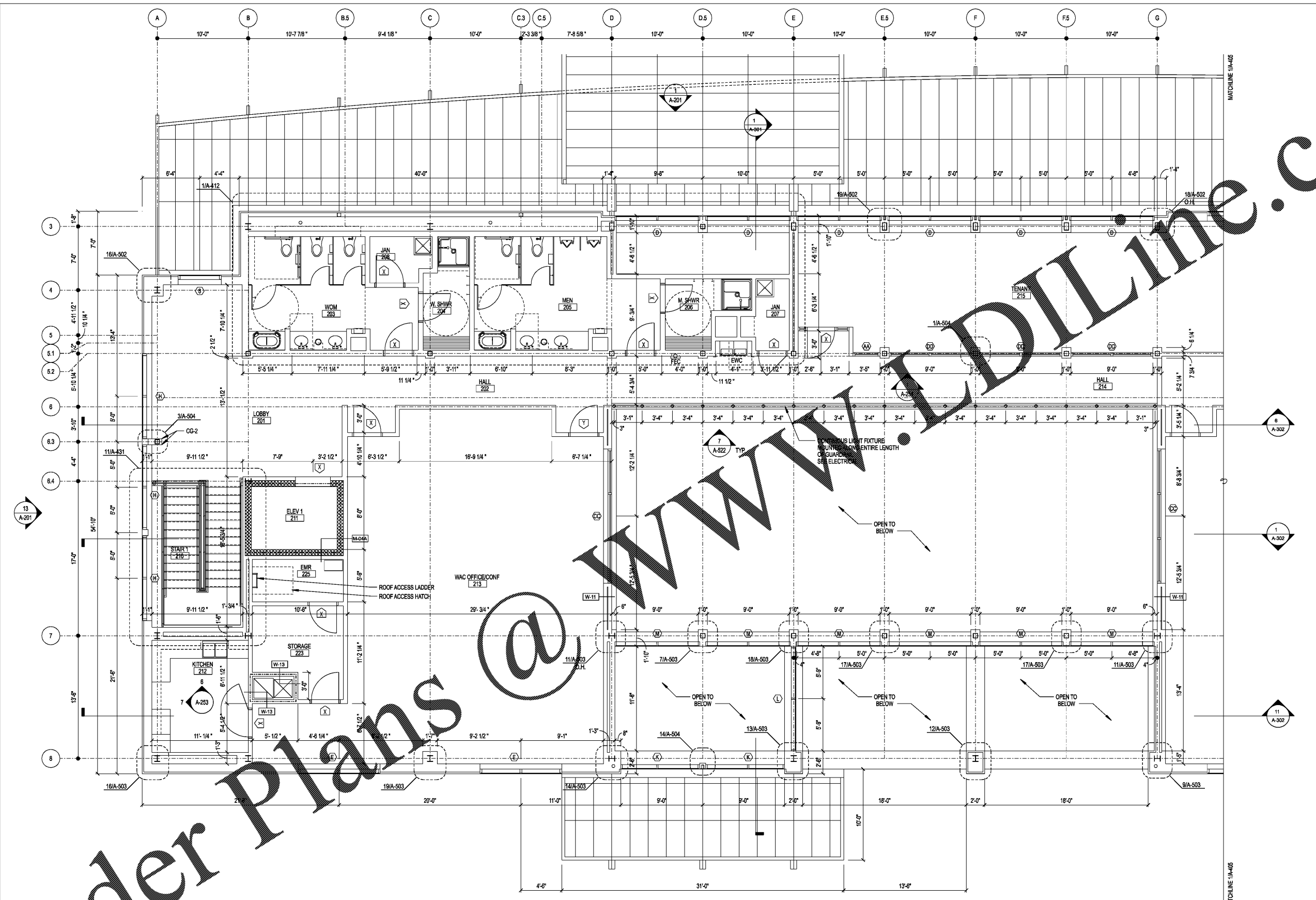
246 LOVES FARM ROAD
BLACKSBURG, SC 29702
(704) 497-7228 FIRM NO.: C-TBD

REVISIONS

DATE DECEMBER 7, 2018
PROJECT NUMBER 9197-000

SHEET TITLE
ENLARGED
LEVEL 2
FLOOR PLAN

SHEET NUMBER
A-404



PLAN LEGEND

	PARTITION AS SCHEDULED
	CMU MASONRY PARTITION AS SCHEDULED
	1 HR FIRE RATED PARTITION

PLAN NOTES

1. SEE 1-44* SERIES FOR FINISHES.
2. SEE A-45* SERIES PLANS FOR EQUIPMENT.
3. SEE A-46* SERIES PLANS FOR FURNITURE.



Order Plans @ www.wilsongroup.com