



THE WILSON GROUP
ARCHITECTS

PO BOX 5510 CHARLOTTE, NC 28209
704-331-8747 • www.wgarchitects.com

CIVIL ENGINEER
TALBERT, BRIGHT & ELLINGTON
3525 WHITEHALL PARK DRIVE, SUITE 210
CHARLOTTE, NC 28273
(704) 425-8070 FIRM NO.: C-1183

STRUCTURAL ENGINEER
STEWART
101 N. TRYON ST., SUITE 1400
CHARLOTTE, NC 28202
(704) 888-3523 FIRM NO.: C-1051

MECHANICAL, ELECTRICAL, PLUMBING &
FIRE PROTECTION ENGINEER
SABER ENGINEERING
2923 S. TRYON ST., SUITE 280
CHARLOTTE, NC 28203
(704) 373-0088 FIRM NO.: C-2130

LANDSCAPE ARCHITECT
URBAN DESIGN PARTNERS
1315-B CENTRAL AVENUE
CHARLOTTE, NC 28205
(704) 334-3303 FIRM NO. C-TBD

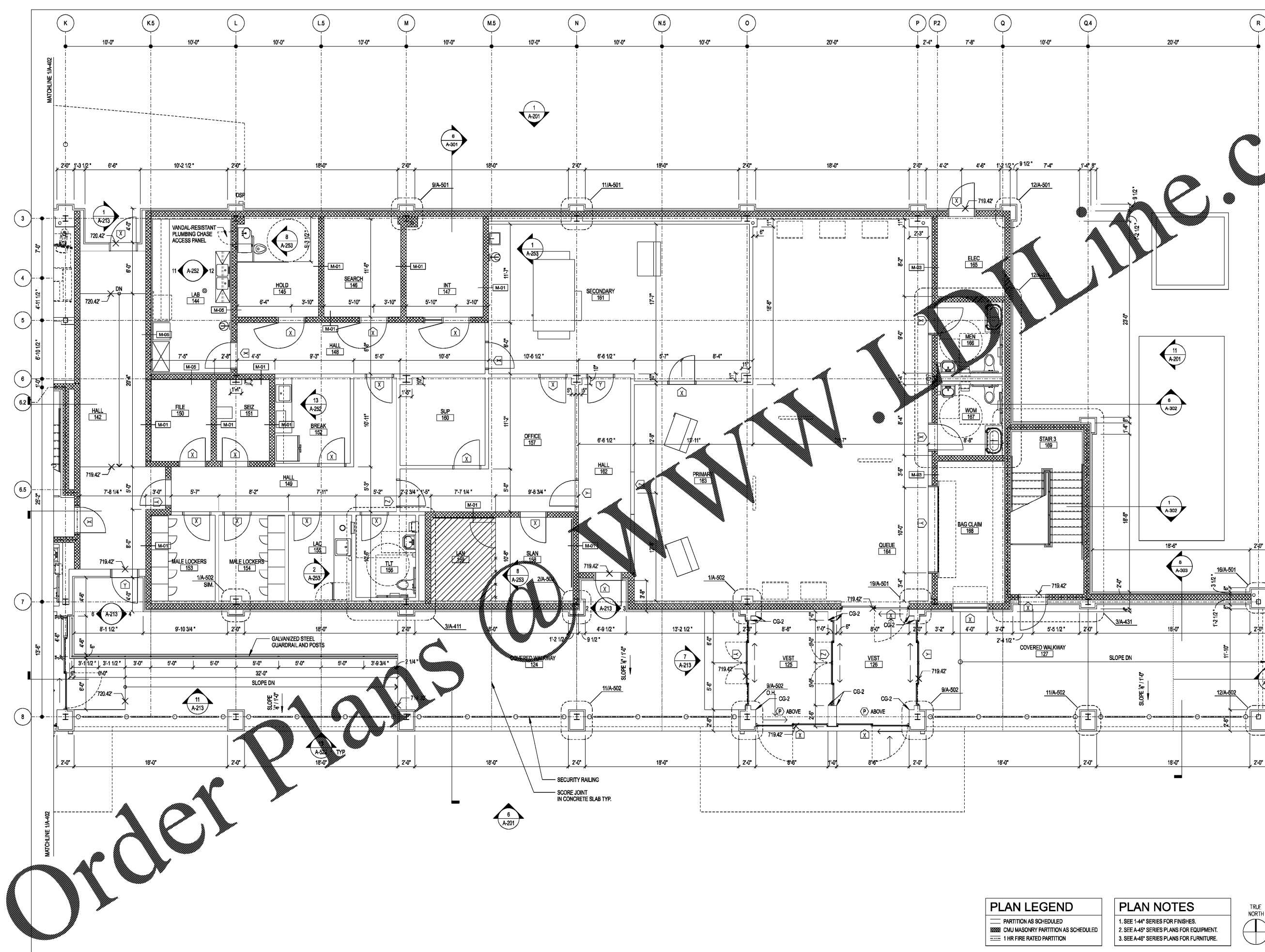
COMMUNICATIONS INFRASTRUCTURE
DB CONSULTING
246 LOVES FARM ROAD
BLACKSBURG, SC 29702
(704) 497-7228 FIRM NO. C-TBD

REVISIONS

DATE DECEMBER 7, 2018
PROJECT NUMBER 9197-000

SHEET TITLE
**ENLARGED
LEVEL 1
FLOOR PLAN**

SHEET NUMBER
A-403



PLAN LEGEND

- PARTITION AS SCHEDULED
- ▨ CMU MASONRY PARTITION AS SCHEDULED
- ▤ 1 HR FIRE RATED PARTITION

PLAN NOTES

1. SEE 1-4" SERIES FOR FINISHES.
2. SEE A-45" SERIES PLANS FOR EQUIPMENT.
3. SEE A-46" SERIES PLANS FOR FURNITURE.



Order Plans