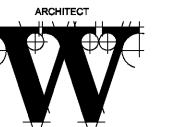


**WILSON AIR CENTER**

**NORTH TERMINAL**

CHARLOTTE-DORRIS INTERNATIONAL AIRPORT  
5327 MORRIS FIELD DRIVE  
CHARLOTTE, NC 28203



**THE WILSON GROUP**  
- ARCHITECTS -

PO BOX 5510 CHARLOTTE, NC 28209  
704-331-8747 • www.twgarchitects.com

CIVIL ENGINEER  
**TALBERT, BRIGHT & ELLINGTON**  
3525 WHITEHALL PARK DRIVE, SUITE 210  
CHARLOTTE, NC 28273  
(704) 428-8070 FIRM NO.: C-1183

STRUCTURAL ENGINEER  
**STEWART**  
101 N. TRYON ST., SUITE 1400  
CHARLOTTE, NC 28202  
(704) 389-3523 FIRM NO.: C-1051

MECHANICAL, ELECTRICAL, PLUMBING & FIRE PROTECTION ENGINEER  
**SABER ENGINEERING**  
2923 S. TRYON ST., SUITE 200  
CHARLOTTE, NC 28203  
(704) 373-0088 FIRM NO.: C-2130

LANDSCAPE ARCHITECT  
**URBAN DESIGN PARTNERS**  
1315-EB CENTRAL AVENUE  
CHARLOTTE, NC 28202  
(704) 334-3303 FIRM NO.: C-TBD

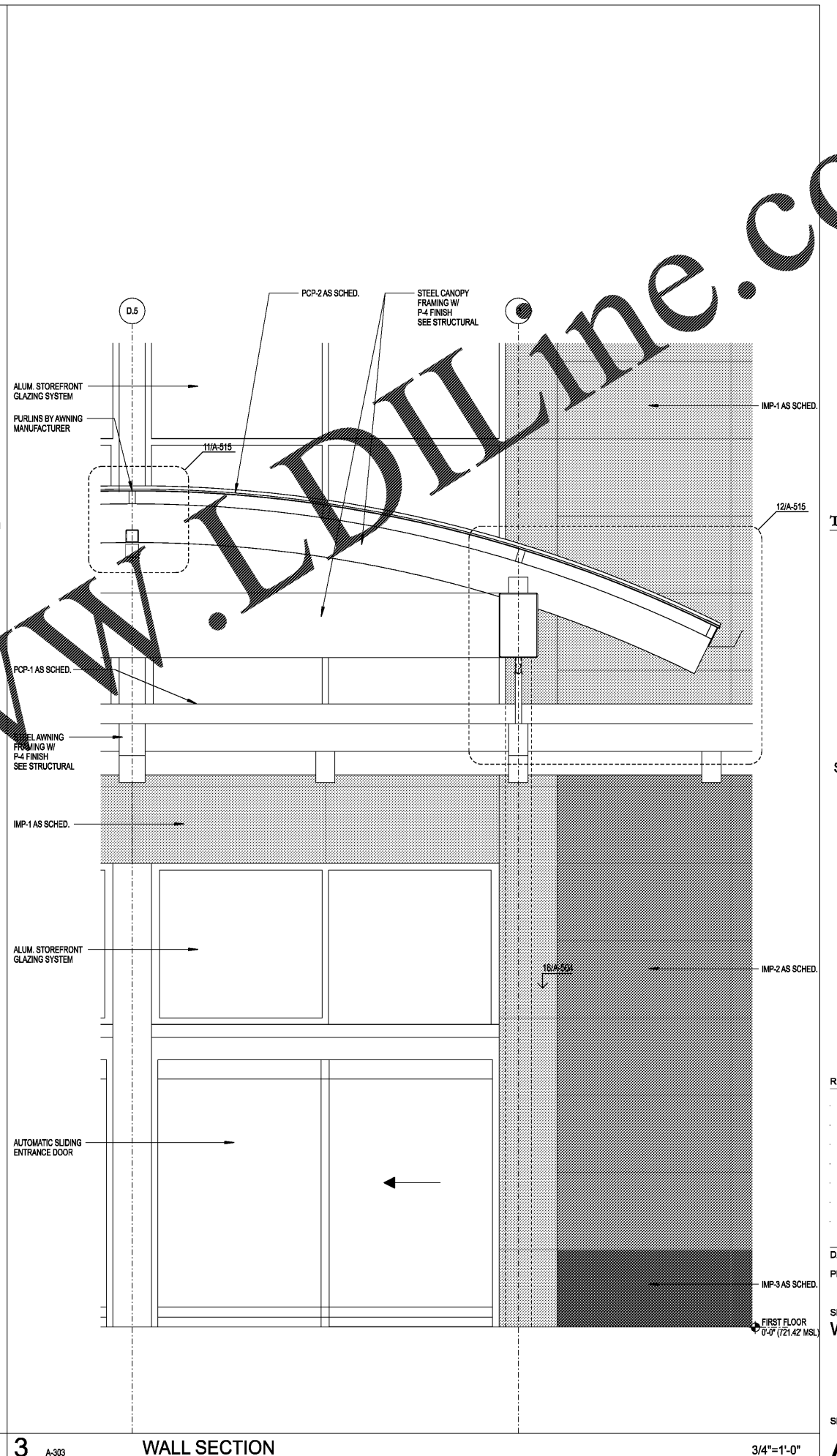
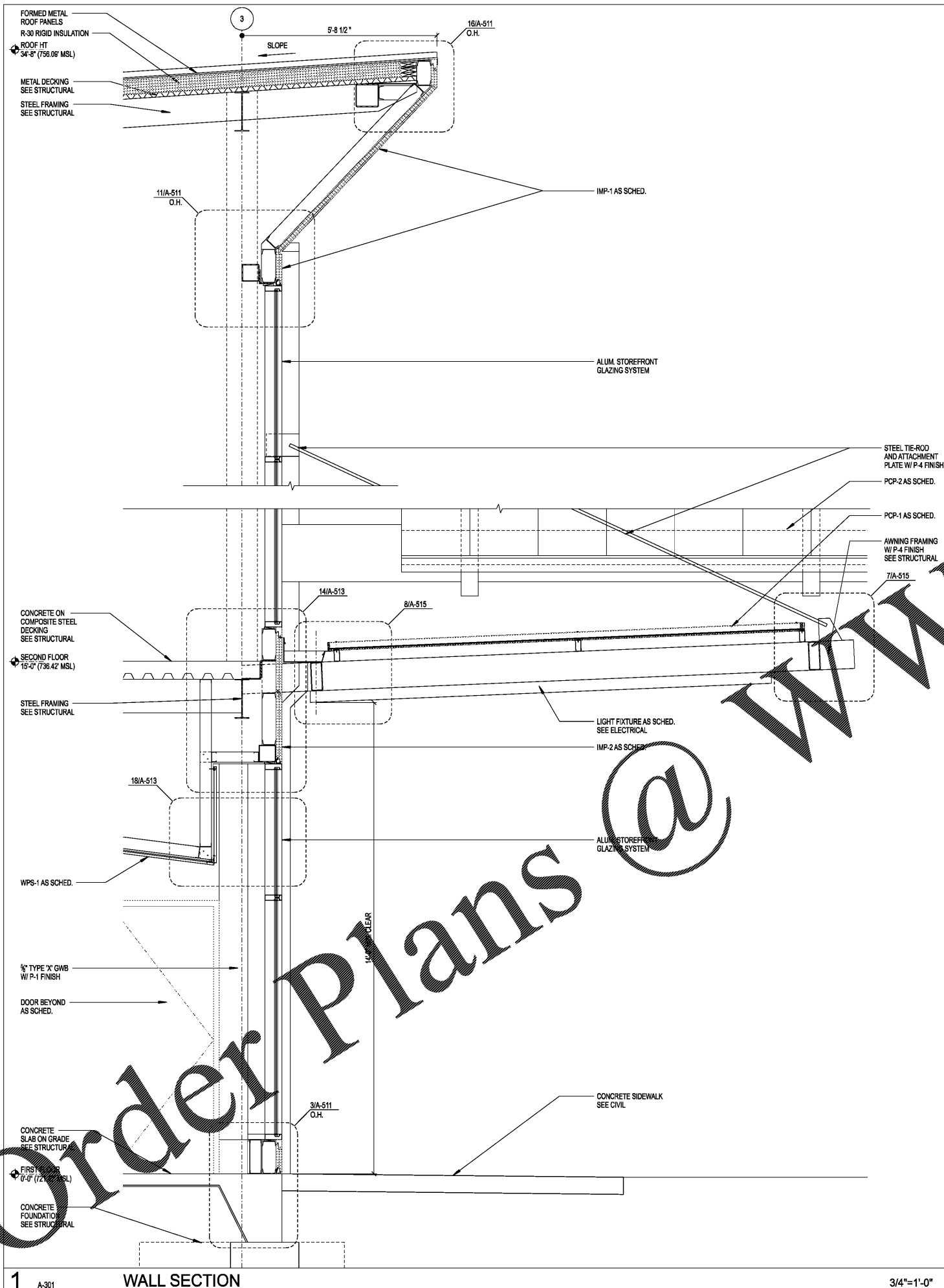
COMMUNICATIONS INFRASTRUCTURE  
**DB CONSULTING**  
246 LOVES FARM ROAD  
BLACKSBURG, SC 29702  
(704) 497-7228 FIRM NO.: C-TBD

REVISIONS

DATE DECEMBER 7, 2018  
PROJECT NUMBER 9197-000

SHEET TITLE  
**WALL SECTIONS**

SHEET NUMBER  
**A-359**



Order Plans @ WWW.LDITLine.com