

THE WILSON GROUP

PO BOX 6510  
CHARLOTTE, NC 28299  
(704) 331-0747

CIVIL ENGINEER  
**TALBERT, BRIGHT & ELLINGTON**  
3625 WHITEHALL PARK DRIVE, SUITE 210  
CHARLOTTE, NC 28273  
(704) 426-6070 FIRM NO.: C-1163

STRUCTURAL ENGINEER  
**STEWART**  
101 N. TRYON ST., SUITE 1400  
CHARLOTTE, NC 28202  
(704) 334-3623 FIRM NO.: C-1051

MECHANICAL, ELECTRICAL, PLUMBING,  
AND FIRE PROTECTION ENGINEER  
**SABER ENGINEERING**  
2923 S. TRYON ST., SUITE 280  
CHARLOTTE, NC 28203  
(704) 373-0066 FIRM NO.: C-2138

LANDSCAPE ARCHITECT  
**URBAN DESIGN PARTNERS**  
1318 E. CENTRAL AVENUE  
CHARLOTTE, NC 28205  
(704) 334-3303 FIRM NO.: C-1B2

COMMUNICATIONS INFRASTRUCTURE  
**DB CONSULTING**  
246 LOVES FARM ROAD  
BLACKSBURG, NC 28702  
(704) 497-7226 FIRM NO.: C-1B2

REVISIONS

DATE: DECEMBER 7, 2018  
PROJECT NUMBER: 9197-000

SHEET TITLE:  
**STEEL COLUMN SCHEDULE**

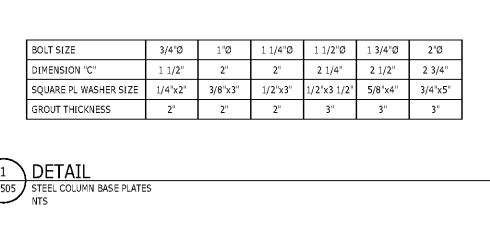
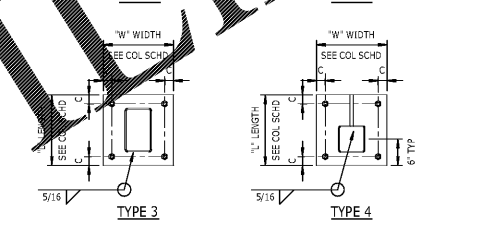
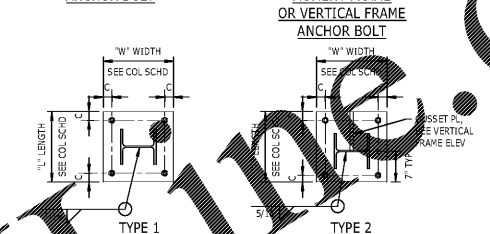
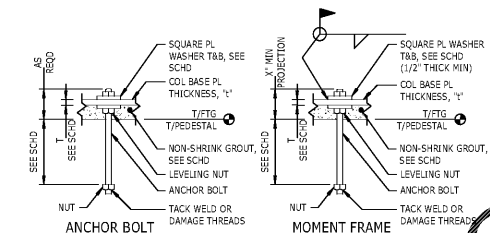
SHEET NUMBER:  
**S-505**

HIGH ROOF																				HIGH ROOF	
33'-10"																				33'-10"	
ROOF																				ROOF	
27'-9"																				27'-9"	
Level 2																				Level 2	
15'-0"																				15'-0"	
Level 1																				Level 1	
0'																				0'	
Column Locations	A-4, A-8, B-3, B-8, C-3, C-8, H-3, I-8	A-6.3	A-7	B-5.1, C-5.1, D-5, E-5, H-5	B-5.2, C-5.2, H-5.2, I-5.2	C-7	D-3, D-5.3, E-3, E-5.2, E-5.5.2, E-5.7, F-3, F-7, F-5.3, F-5.7, G-3	D-5.2, D-5.5.2, E-5.2, E-5.5.2, F-5.2, F-5.5.2, G-5.2	D-7, D-8, E-8, G-7	D-5.7	F-5, H-7	F-8	G-5	G-8	H-8						
BASE PLATE SIZE	3/4"x14"x14"	3/4"x12"x16"	3/4"x14"x14"	3/4"x12"x12"	0'x0'x0"	3/4"x12"x16"	3/4"x12"x16"	0'x0'x0"	1'x14"x16"	3/4"x12"x16"	1'x12"x15"	3/4"x14"x14"	3/4"x12"x12"	1'x14"x14"	3/4"x14"x14"					BASE PLATE SIZE	
BASE PLATE TYPE	TYPE 1	TYPE 3	TYPE 1	TYPE 1	SEE SECTION	TYPE 3	TYPE 3	SEE SECTION	TYPE 2	TYPE 4	TYPE 1	TYPE 1	TYPE 1	TYPE 1						BASE PLATE TYPE	
ANCHOR BOLTS	(4)3/4"	(4)3/4"	(4)3/4"	(4)3/4"	(0)0"	(4)3/4"	(4)3/4"	(0)0"	(4)3/4"	(4)3/4"	(4)3/4"	(4)3/4"	(4)3/4"	(4)3/4"	(4)3/4"						ANCHOR BOLTS
EMBEDMENT LENGTH	9"	9"	9"	9"	9"	9"	9"	0"	12"	9"	12"	9"	9"	12"	9"						EMBEDMENT LENGTH

HIGH ROOF																					HIGH ROOF
33'-10"																					33'-10"
ROOF																					ROOF
27'-9"																					27'-9"
Level 2																					Level 2
15'-0"																					15'-0"
Level 1																					Level 1
0'																					0'
Column Locations	J-3, J-8, K-3	I-5, I-7	J-6.1	J-7	K-7	L-8	L-3, M-3, L-8, M-6, N-6, O-3, P-3	L-8, M-8, N-8, O-8, P-8	P-6	Q-4-8	R-7, R-8										
BASE PLATE SIZE	3/4"x14"x14"	3/4"x14"x14"	3/4"x12"x12"	3/4"x14"x14"	3/4"x14"x14"	3/4"x14"x14"	3/4"x14"x14"	3/4"x14"x14"	0'x0'x0"	3/4"x12"x12"	3/4"x12"x12"										BASE PLATE SIZE
BASE PLATE TYPE	TYPE 1	TYPE 1	TYPE 1	TYPE 1	TYPE 1	TYPE 1	TYPE 1	TYPE 1	SEE SECTION	TYPE 1	TYPE 1										BASE PLATE TYPE
ANCHOR BOLTS	(4)3/4"	(4)3/4"	(4)3/4"	(4)3/4"	(4)3/4"	(4)3/4"	(4)3/4"	(4)3/4"	(0)0"	(4)3/4"	(4)3/4"										ANCHOR BOLTS
EMBEDMENT LENGTH	9"	9"	9"	9"	9"	9"	9"	9"	0"	9"	9"										EMBEDMENT LENGTH

Steel Column Schedule

1/8" = 1'-0"  
NOTE: WHERE BASE AND ANCHOR BOLT INFORMATION IS NOT GIVEN IN SCHEDULE, SEE OTHER SECTIONS

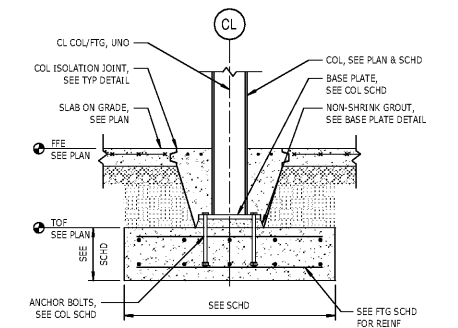


BOLT SIZE	3/4"	1"	1 1/4"	1 1/2"	1 3/4"	2"
DIMENSION "C"	1 1/2"	2"	2"	2 1/4"	2 1/2"	2 3/4"
SQUARE PL WASHER SIZE	1/4"x2"	3/8"x3"	1/2"x3"	1/2"x3 1/2"	5/8"x4"	3/4"x5"
GROUT THICKNESS	2"	2"	2"	3"	3"	3"

1 DETAIL

S-505 STEEL COLUMN BASE PLATES

NTS

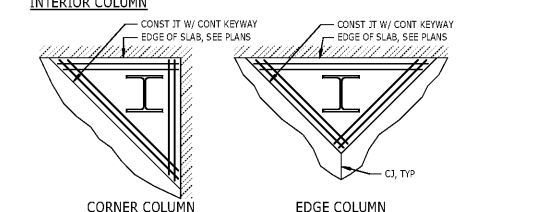
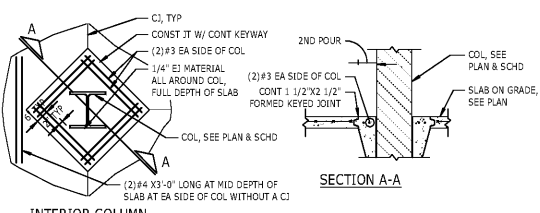


2 SECTION

S-505 TYPICAL SPREAD FOOTING AT STEEL COLUMN

NTS

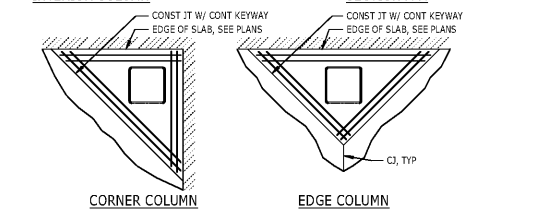
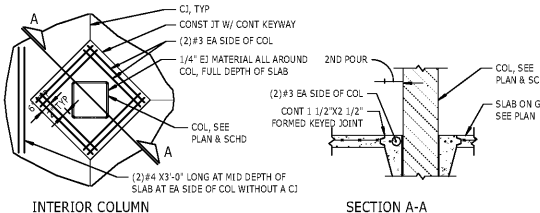
NOTES:  
1. COAT BASE PLATE, ANCHOR BOLTS, AND COLUMN BELOW SLAB ON GRADE WITH AN APPROVED ASPHALT PAINT.



3 DETAIL

S-505 COLUMN ISOLATION JOINTS, WF COLUMNS

NTS



3 DETAIL

S-505 COLUMN ISOLATION JOINTS, HSS COLUMNS

NTS

Order Plans