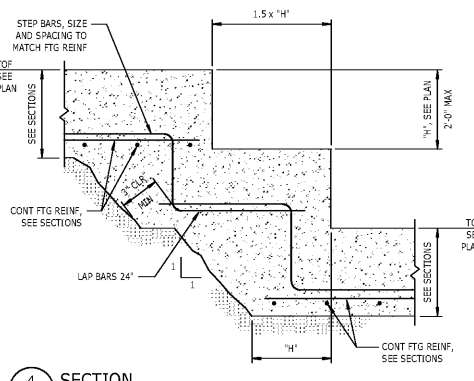


Type	SIZE		DEPTH	REINFORCEMENT (EACH WAY)	
	WIDTH	LENGTH		TOP	BOTTOM
F5	5'-0"	5'-0"	1'-0"	NA	(6)#5
F6	6'-0"	6'-0"	1'-0"	NA	(7)#5
F7	7'-0"	7'-0"	1'-0"	NA	(8)#5
F8	8'-0"	8'-0"	1'-3"	NA	(9)#6
F8*	8'-0"	8'-0"	1'-3"	(9)#6	(9)#6
F9	9'-0"	9'-0"	1'-6"	NA	(10)#6
F9*	9'-0"	9'-0"	1'-6"	(10)#6	(10)#6
F10	10'-0"	10'-0"	1'-8"	NA	(11)#6
F10*	10'-0"	10'-0"	1'-8"	(11)#6	(11)#6
F11*	11'-0"	11'-0"	2'-0"	(12)#6	(12)#6

**3 SCHEDULE**  
S-301 SPREAD FOOTING SCHEDULE  
NTS



WILSON AIR CENTER

NORTH TERMINAL

HCDT P...  
CHARLOTTE-DOUGL...  
INTERNATIONAL AIR...  
5327 MARKET FIE...  
CHARLOTTE, NC 28203



ARCHITECT  
**W**

THE WILSON GROUP  
PO BOX 5510  
CHARLOTTE, NC 28299  
(704) 331-9747

CIVIL ENGINEER  
**TALBERT, BRIGHT & ELLINGTON**  
3525 WHITEHALL PARK DRIVE, SUITE 210  
CHARLOTTE, NC 28203  
(704) 426-6070 FIRM NO.: C-1163

STRUCTURAL ENGINEER  
**STEWART**  
101 N. TRYON ST., SUITE 1400  
CHARLOTTE, NC 28202  
(704) 334-3523 FIRM NO.: C-1051

MECHANICAL, ELECTRICAL, PLUMBING,  
AND FIRE PROTECTION ENGINEER  
**SABER ENGINEERING**  
2923 S. TRYON ST., SUITE 280  
CHARLOTTE, NC 28203  
(704) 373-0066 FIRM NO.: C-2138

LANDSCAPE ARCHITECT  
**URBAN DESIGN PARTNERS**  
1318-ER CENTRAL AVENUE  
CHARLOTTE, NC 28205  
(704) 334-3303 FIRM NO. C-118D

COMMUNICATIONS INFRASTRUCTURE  
**DB CONSULTING**  
246 LOVES FARM ROAD  
BLACKSBURG, VA 24010  
(704) 497-7228 FIRM NO. C-118D

REVISIONS

DATE: DECEMBER 7, 2018  
PROJECT NUMBER: 9197-000

SHEET TITLE:  
**TYPICAL FOUNDATION DETAILS**

SHEET NUMBER:  
**S-301**

Order Plans @ WWW.LDILLINE.COM