

THE WILSON GROUP

PO BOX 5510
 CHARLOTTE, NC 28299
 (704) 331-9747

CIVIL ENGINEER
TALBERT, BRIGHT & ELLINGTON
 3525 WHITEHALL PARK DRIVE, SUITE 210
 CHARLOTTE, NC 28273
 (704) 426-6070 FIRM NO.: C-1163

STRUCTURAL ENGINEER
STEWART
 101 N. TRYON ST., SUITE 1400
 CHARLOTTE, NC 28202
 (704) 334-3523 FIRM NO.: C-1051

MECHANICAL, ELECTRICAL, PLUMBING,
 AND FIRE PROTECTION ENGINEER
SABER ENGINEERING
 2923 S. TRYON ST., SUITE 280
 CHARLOTTE, NC 28203
 (704) 373-0069 FIRM NO.: C-2138

LANDSCAPE ARCHITECT
URBAN DESIGN PARTNERS
 1318-ER CENTRAL AVENUE
 CHARLOTTE, NC 28205
 (704) 334-3303 FIRM NO.: C-TBD

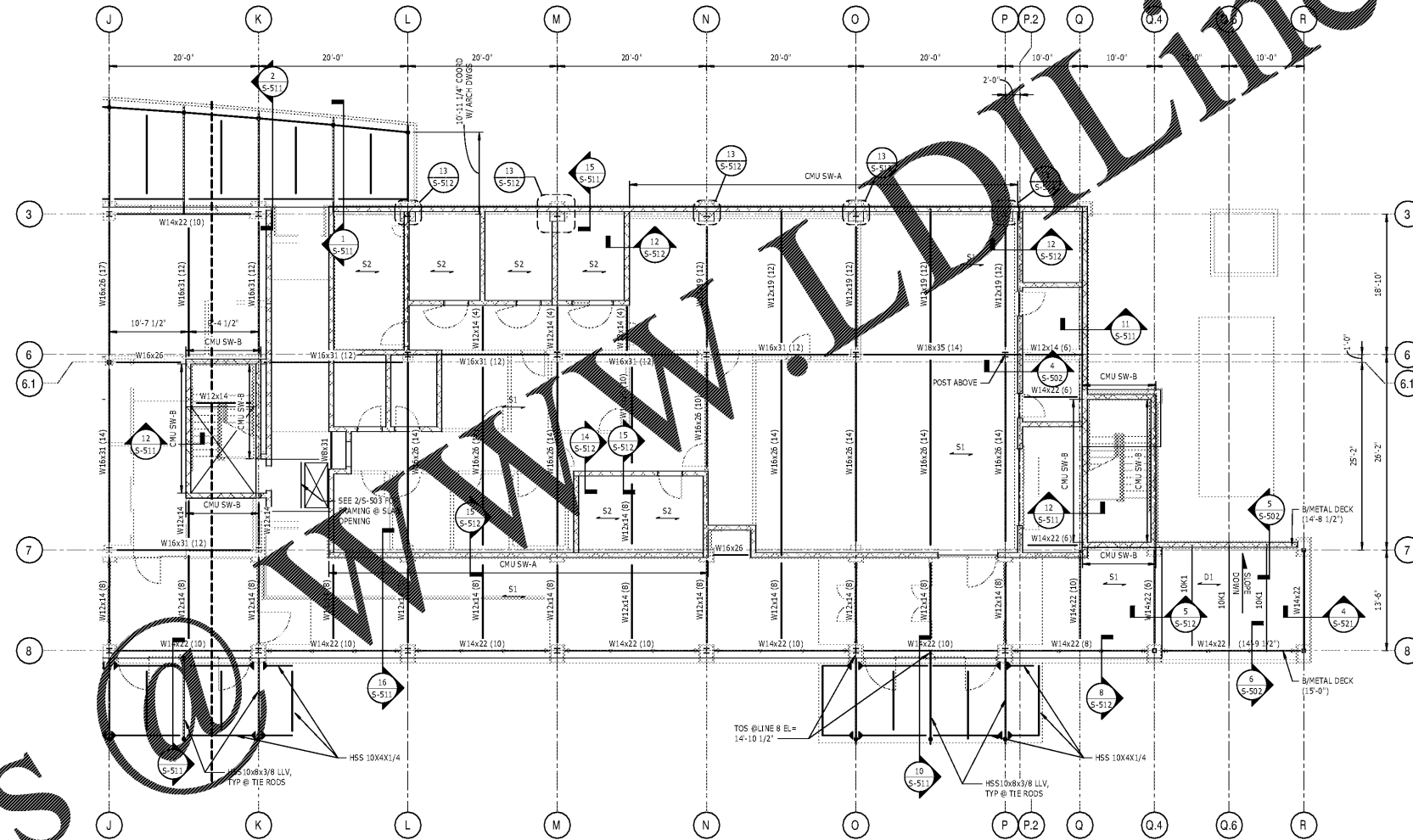
COMMUNICATIONS INFRASTRUCTURE
DB CONSULTING
 246 LOVES FARM ROAD
 BLACKSBURG, VA 27702
 (704) 497-7226 FIRM NO.: C-TBD

REVISIONS

DATE: DECEMBER 7, 2018
 PROJECT NUMBER: 9197-000

SHEET TITLE:
PARTIAL FLOOR FRAMING PLAN EAST

SHEET NUMBER:
S-122



1 FLOOR FRAMING PLAN - EAST

S-122 1/8" = 1'-0"

- NOTES:
- FOR GENERAL NOTES AND ABBREVIATIONS, SEE S-001.
 - FINISHED FLOOR ELEVATION 15'-0" ABOVE REFERENCE FINISHED FLOOR ELEVATION, UNO.
 - TOP OF STEEL ELEVATION 6 1/4" BELOW FINISHED FLOOR ELEVATION, UNO. (NO) INDICATES TOP OF STEEL ELEVATION.
 - S₁ INDICATES STEEL DECK SPAN DIRECTION. CONSTRUCTION SHALL BE 3 1/4" LIGHT WEIGHT CONCRETE ON 3"-20GA COMPOSITE STEEL DECK. TOTAL THICKNESS = 6 1/4". SEE TYPICAL SLAB CONSTRUCTION DETAILS ON S-501.
 - S₂ INDICATES STEEL DECK SPAN DIRECTION. CONSTRUCTION SHALL BE 1 1/2"-22GA METAL DECK. SEE 1/5-503 FOR TYPICAL ROOF CONSTRUCTION DETAIL.
 - MINIMUM COMPOSITE BEAM REACTION TO BE 10k, UNO.
 - INDICATES MOMENT CONNECTION TYPE. SEE 1/5-501.
 - SEE ELEVATION CALLOUTS ON PLAN FOR VERTICAL FRAME LOCATIONS. SEE S-200% FOR ELEVATIONS AND DETAILS.
 - FOR TYPICAL SLAB CONSTRUCTION DETAILS, SEE S-501.
 - FOR STEEL COLUMN SCHEDULE, SEE S-505.
 - S₁ INDICATES 3 1/4" LIGHT WEIGHT CONC ON 3"-18GA COMPOSITE STEEL DECK.

Order Plans

WORLDLINE.com