

**THE WILSON GROUP**

PO BOX 5510  
 CHARLOTTE, NC 28299  
 (704) 331-9747

CIVIL ENGINEER  
**TALBERT, BRIGHT & ELLINGTON**  
 3525 WHITEHALL PARK DRIVE, SUITE 210  
 CHARLOTTE, NC 28273  
 (704) 426-6070 FIRM NO.: C-1163

STRUCTURAL ENGINEER  
**STEWART**  
 101 N. TRYON ST., SUITE 1400  
 CHARLOTTE, NC 28202  
 (704) 334-3523 FIRM NO.: C-1051

MECHANICAL, ELECTRICAL, PLUMBING,  
 AND FIRE PROTECTION ENGINEER  
**SABER ENGINEERING**  
 2923 S. TRYON ST., SUITE 200  
 CHARLOTTE, NC 28203  
 (704) 373-0066 FIRM NO.: C-2138

LANDSCAPE ARCHITECT  
**URBAN DESIGN PARTNERS**  
 1318 E. CENTRAL AVENUE  
 CHARLOTTE, NC 28205  
 (704) 334-3303 FIRM NO.: C-TBD

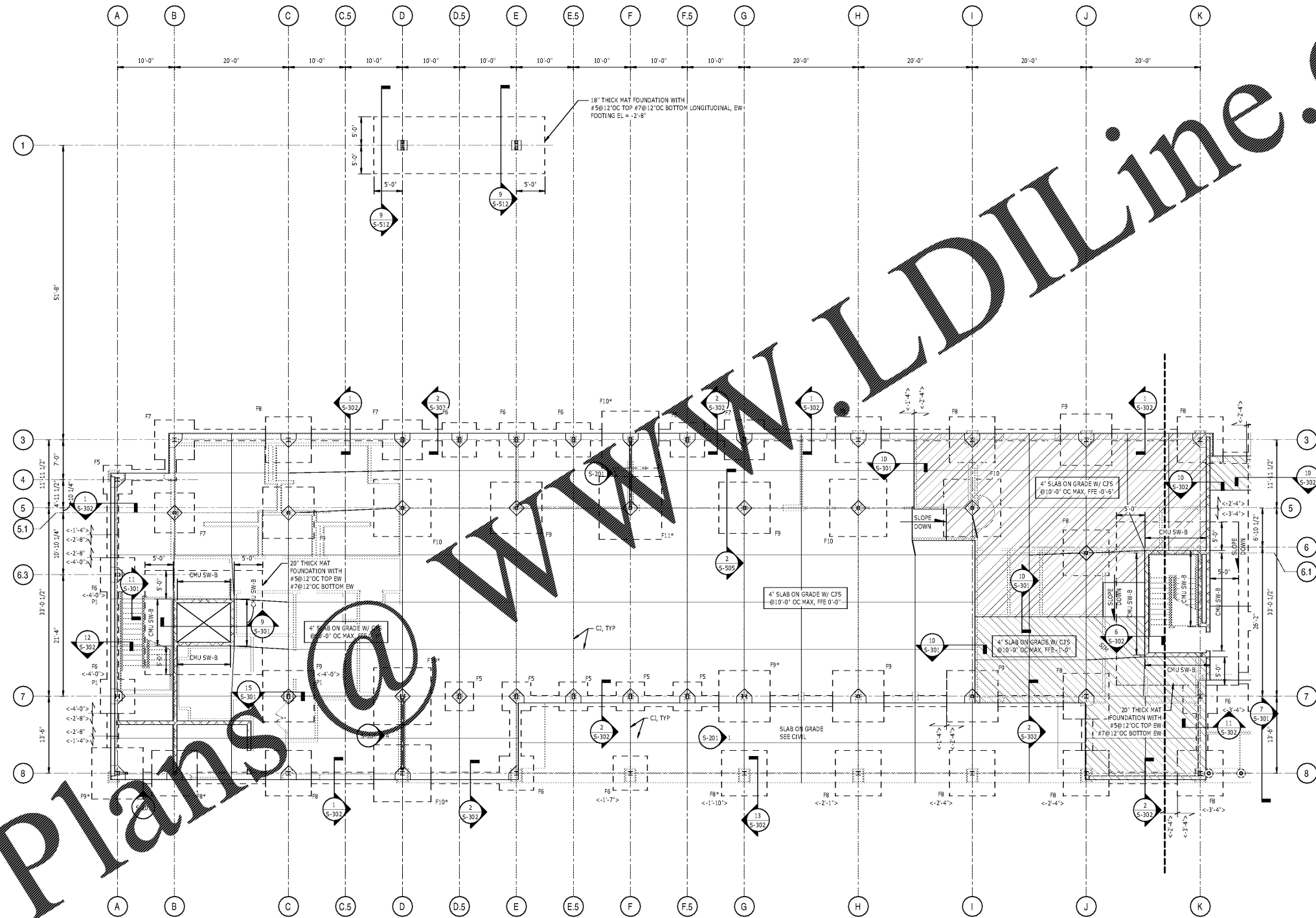
COMMUNICATIONS INFRASTRUCTURE  
**DB CONSULTING**  
 246 LOVES FARM ROAD  
 BLACKSBURG, SC 29702  
 (704) 497-7226 FIRM NO.: C-TBD

**REVISIONS**

DATE: DECEMBER 7, 2018  
 PROJECT NUMBER: 9197-000

SHEET TITLE:  
**PARTIAL FOUNDATION PLAN WEST**

SHEET NUMBER:  
**S-101**



**FOUNDATION PLAN - WEST**  
 1/8" = 1'-0"

- NOTES:
- FOR GENERAL NOTES AND ABBREVIATIONS, SEE S-101.
  - FINISHED FLOOR ELEVATION 721.42, UNO. REFERENCE ELEVATION 0'-0'.
  - [No] INDICATES DERESSED OR RAISED SLAB ELEVATION, SEE PLAN.
  - TOP OF FOOTING 1'-4" BELOW FINISHED FLOOR ELEVATION, UNO. <No> INDICATES TOP OF FOOTING ELEVATION, SEE PLAN.
  - INDICATES STEP-IN WALL FOOTING, SEE 4/S-301.
  - INDICATES FOOTING TYPE, SEE 3/S-301.
  - INDICATES CONCRETE PEDESTAL TYPE, SEE 1/S-301.
  - TOP OF PEDESTAL ELEVATION 0'-4" BELOW FINISHED FLOOR ELEVATION, UNO. [No] INDICATES TOP OF PEDESTAL ELEVATION, SEE PLAN.
  - SEE ELEVATION CALLOUTS ON PLAN FOR VERTICAL FRAME LOCATIONS, SEE S200 FOR ELEVATIONS AND DETAILS.
  - FOR TYPICAL SLAB CONSTRUCTION DETAILS, SEE 1/S-301.
  - CONTRACTOR TO COORDINATE ALL THICKENED SLAB LOCATIONS UNDER CMU PARTITIONS WITH ARCHITECTURAL DRAWINGS.
  - FOR STEEL COLUMN SCHEDULE, SEE S-505.

Order Plans @ [www.LDILine.com](http://www.LDILine.com)