

THE WILSON GROUP
 P O BOX 5510
 CHARLOTTE, NC 28209
 (704) 331-8747

CIVIL ENGINEER
TALBERT, BRIGHT & ELLINGTON

3525 WHITEHALL PARK DRIVE, SUITE 210
 CHARLOTTE, NC 28273
 (704) 426-6070 FIRM NO. C-1163

STRUCTURAL ENGINEER
STEWART

101 N. TRYON ST., SUITE 1400
 CHARLOTTE, NC 28202
 (704) 909-3523 FIRM NO. C-1051

MECHANICAL, ELECTRICAL, PLUMBING & FIRE PROTECTION ENGINEER
SABER ENGINEERING

2323 S. TRYON ST., SUITE 200
 CHARLOTTE, NC 28203
 (704) 373-0068 FIRM NO. C-2130

LANDSCAPE ARCHITECT
URBAN DESIGN PARTNERS

1318-E6 CENTRAL AVENUE
 CHARLOTTE, NC 28205
 (704) 334-3303 FIRM NO. C-TBD

COMMUNICATIONS INFRASTRUCTURE
DB CONSULTING

246 LOVES FARM ROAD
 BLACKSBURG, SC 29702
 (704) 467-7228 FIRM NO. C-TBD

DATE: DECEMBER 7, 2018
 PROJECT NUMBER: 9197-000

SHEET TITLE: **MISCELLANEOUS DETAILS**

SHEET NUMBER: **C-604**

ACCESSIBLE PARKING REQUIREMENTS

TOTAL PARKING SPACES PROVIDED	MINIMUM NUMBER OF ACCESSIBLE SPACES REQUIRED	MINIMUM NUMBER OF ACCESSIBLE SPACES REQUIRED TO BE VAN ACCESSIBLE
1 TO 25	1	1
26 TO 50	2	1
51 TO 75	3	1
76 TO 100	4	1
101 TO 150	5	1
151 TO 200	6	1
201 TO 300	7	1
301 TO 400	8	1
401 TO 500	9	2
501 TO 1000	2% OF TOTAL	1 IN EVERY 8 ACCESSIBLE SPACES
1001 AND OVER	2% PLUS 1 FOR EACH 100 OVER 1000	1 IN EVERY 8 ACCESSIBLE SPACES

NOTE: SECTION 208 OF THE ADA STANDARDS FOR ACCESSIBLE DESIGN

NOTE: 1. ALL 12"x18" ACCESSIBLE SIGNS (R7-8 & R7-1) SHALL BE MOUNTED AT 7 FEET FROM GRADE TO BOTTOM EDGE OF SIGN FACE (MUTCD). MOUNTING HEIGHT CAN BE REDUCED TO 4 FEET IF PLACED IN AN AREA BEHIND A SIGN AND BEHIND TAPE IN WHICH PEDESTRIANS ARE NOT EXPECTED TO USE.

NOTE: 2. REFER TO MANUAL ON UNIFORM TRAFFIC CONTROL DEVICES (MUTCD) U.S. DEPARTMENT OF TRANSPORTATION AND NORTH CAROLINA DEPARTMENT OF TRANSPORTATION SUPPLEMENT.

NOTE: 3. IF ACCESSIBLE ROUTE IS A RAISED SIDEWALK AREA, THEN MARKS ARE REQUIRED AT LANDING ZONE AREA.

NOTE: 4. SIGNAGE MUST NOT OBSTRUCT ACCESSIBLE ROUTE OR DRAPES.

CITY OF CHARLOTTE LAND DEVELOPMENT STANDARDS
 INCLUDES CHARLOTTE 874

ACCESSIBLE PARKING AND SIGNAGE STANDARDS

50.10A 9

SUPPLEMENTAL VAN ACCESSIBLE SIGN (R7-8P)

NOTE: INCREASE SPACING 20%
 2-FRAME (FEDERAL REGISTRY ADMINISTRATION/USDOT)
 SERIES 9 LETTERS

LEGEND AND BORDER - GREEN
 BACKGROUND - WHITE

CITY OF CHARLOTTE LAND DEVELOPMENT STANDARDS
 INCLUDES CHARLOTTE 874

SUPPLEMENTAL VAN ACCESSIBLE SIGN (R7-8P)

50.10B 9

SUPPLEMENTAL ACCESSIBLE SIGN

NOTE: SUPPLEMENTAL ACCESSIBLE SIGN REQUIRED IF THERE IS ONLY ONE ACCESSIBLE SPACE (MUTCD). ADDITIONAL REQUIREMENTS FOR ACCESSIBLE SPACES (SEE 50.10A)

LEGEND AND BORDER - GREEN
 BACKGROUND - WHITE

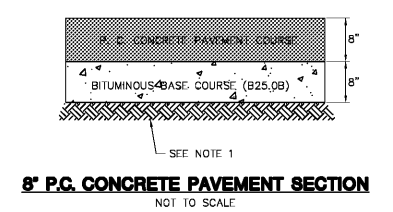
SIGN APPROVED FOR USE UNDER GENERAL PERMIT #37-8

THIS SIGN IS REQUIRED TO ACCOMPANY ALL R7-8 SIGNS CONSTRUCTED AFTER DECEMBER 31, 1990

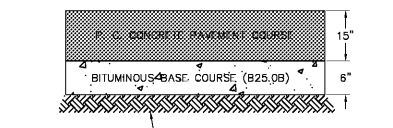
CITY OF CHARLOTTE LAND DEVELOPMENT STANDARDS
 INCLUDES CHARLOTTE 874

SUPPLEMENTAL ACCESSIBLE SIGN

50.10C 9

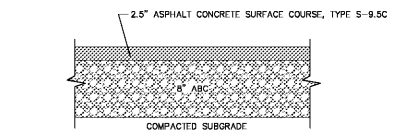


8\"/>

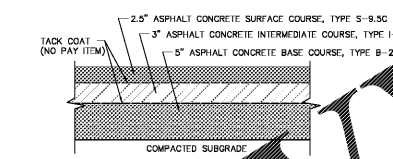


15\"/>

NOTES: 1. PREPARED SUBGRADE COMPACTED TO 95% OF MAXIMUM DENSITY AS DETERMINED BY ASTM D1557.



STANDARD ASPHALT PAVEMENT SECTION



TYPICAL HEAVY DUTY ASPHALT PAVEMENT SECTION FOR BUS LANE



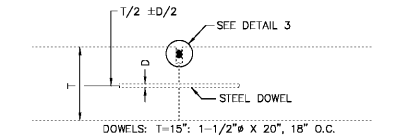
HANDICAP PARKING PAVEMENT SYMBOL DETAIL

- SIGN NOTES:**
- ALL 12"x18" ACCESSIBLE SIGNS (R7-8a & R7-1) SHALL BE MOUNTED AT 7 FEET FROM GRADE TO BOTTOM EDGE OF SIGN FACE (MUTCD).
 - REFER TO MANUAL ON UNIFORM TRAFFIC CONTROL DEVICES (MUTCD) U.S. DEPARTMENT OF TRANSPORTATION AND NORTH CAROLINA DEPARTMENT OF TRANSPORTATION SUPPLEMENT.

- PAVEMENT MARKINGS:**
- PAVEMENT MARKINGS SHALL BE 4" WHITE PAINT UNLESS OTHERWISE NOTED.
 - A PERIOD OF 30 DAYS SHALL ELAPSE BETWEEN PLACEMENT OF THE BITUMINOUS SURFACE COURSE AND THE FULL APPLICATION OF THE PAINT.

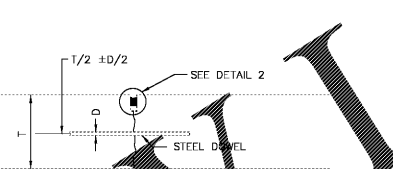
PAVEMENT DETAIL NOTES:

- CONTRACTOR SHALL PLACE ALL BACKER ROD IN ALL SAW CUTS IMMEDIATELY FOLLOWING SAWING AND CLEANING OF JOINT TO KEEP MATERIAL FROM ENTERING SAWED JOINT. BACKER ROD SHALL BE SIZED TO ENSURE A TIGHT FIT AGAINST THE SIDES OF THE JOINT.
- A MINIMUM OF FIVE DAYS CURE TIME IS REQUIRED FOR DRILLING NEW CONCRETE UNLESS APPROVED BY THE ENGINEER, OR CONCRETE REACHES BOX OF FULL STRENGTH.
- AFTER THE DRILLING IS COMPLETE AND PRIOR TO THE INSTALLATION OF THE DOWELS, THE HOLES SHALL BE THOROUGHLY CLEANED TO REMOVE DRILLING DUST, CONCRETE CHIPS, AND ANY MATERIAL DETRIMENTAL TO DEVELOPING BOND.
- EPOXY MORTAR SHALL BE INSERTED INTO THE BACK OF THE DOWEL HOLE BY INJECTION NOZZLE AND SUFFICIENT MORTAR PLACED IN THE HOLE SO THAT A SLIGHT AMOUNT OF MORTAR WILL BE FORCED OUT WHEN THE DOWEL IS INSERTED AND TAPPED TO THE CORRECT POSITION. SMALL WEDGES MAY BE USED TO SUPPORT THE DOWEL IN THE CORRECT ALIGNMENT UNTIL THE MORTAR HARDENS. CONTRACTOR SHALL SUBMIT PROPOSED EPOXY MORTAR INFORMATION FOR APPROVAL BY THE ENGINEER PRIOR TO STARTING THIS WORK.
- LONGITUDINAL AND TRANSVERSE CONSTRUCTION JOINTS SHALL NOT REQUIRE INITIAL SAWCUT.
- TRANSVERSE CONSTRUCTION JOINTS SHALL BE USED ONLY AS APPROVED BY THE ENGINEER, OR A BULKHEAD IF APPROVED BY THE OWNER.
- THE BACK-UP ROD MATERIAL SHALL BE COMPATIBLE WITH THE SEALANT AND SLIGHTLY OVERSIZED TO PREVENT MOVEMENT DURING THE JOINT SEALING OPERATION.



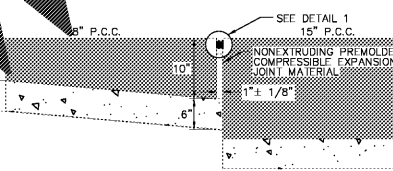
DOWELED CONSTRUCTION JOINT (TYPE E)

- NOTES: 1. WHERE NEW PAVEMENT ADJOINS EXISTING PAVEMENT, SAW CUT EXISTING PAVEMENT FULL DEPTH TO A NEAT, UNIFORM EDGE PRIOR TO PAVING.
- DRILL HOLES INTO EXISTING PAVEMENT AND THOROUGHLY CLEAN. FILL WITH EPOXY RESIN TO SET DOWEL.
 - GREASE ENTIRE DOWEL IN NEW PAVEMENTS.

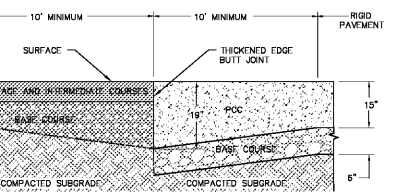


DOWELED CONSTRUCTION JOINT (TYPE C)

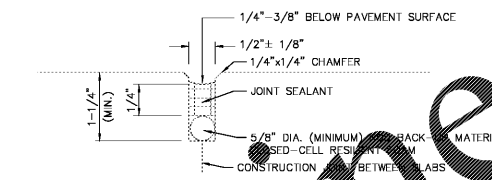
- NOTE: 1. GREASE ENTIRE DOWEL IN NEW PAVEMENTS.



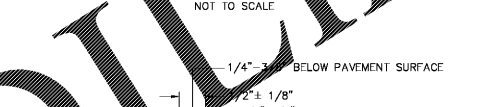
8\"/>



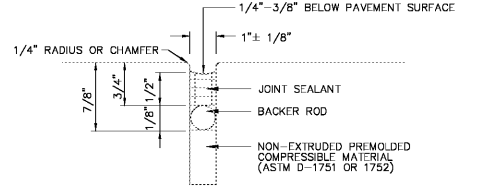
PCC TO HMA TRANSITION DETAIL



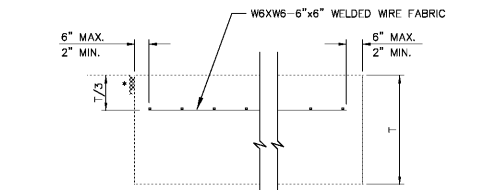
DETAIL 3



DETAIL 2

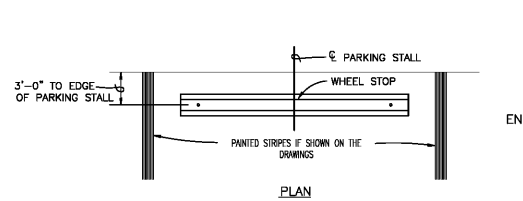


DETAIL 1

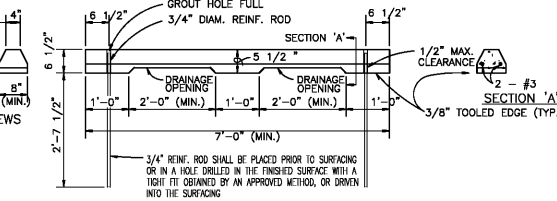


REINFORCED CONCRETE PAVEMENT SLAB

REINFORCEMENT REQUIRED IN ALL ODD-SHAPED SLABS AND SLABS WITH PENETRATIONS (MANHOLES, FENCE POSTS, ETC.) AS SHOWN ON PLANS. REINFORCEMENT MUST BE IN PLACE PRIOR TO PAVING.



PRECAST CONCRETE WHEEL STOP DETAIL



ELEVATION