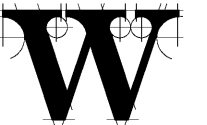




ARCHITECT



THE WILSON GROUP

P O BOX 5510
CHARLOTTE, NC 28209
(704) 331-8747

CIVIL ENGINEER
TALBERT, BRIGHT & ELLINGTON

3825 WHITEHALL PARK DRIVE, SUITE 210
CHARLOTTE, NC 28273
(704) 426-6070 FIRM NO. C-1163

STRUCTURAL ENGINEER
STEWART

101 N. TRYON ST., SUITE 1400
CHARLOTTE, NC 28202
(704) 909-3523 FIRM NO. C-1051

MECHANICAL, ELECTRICAL, PLUMBING & FIRE PROTECTION ENGINEER
SABER ENGINEERING

2823 S. TRYON ST., SUITE 280
CHARLOTTE, NC 28203
(704) 373-0068 FIRM NO. C-2130

LANDSCAPE ARCHITECT
URBAN DESIGN PARTNERS

1318-EE CENTRAL AVENUE
CHARLOTTE, NC 28205
(704) 334-3303 FIRM NO. C-TBD

COMMUNICATIONS INFRASTRUCTURE
DB CONSULTING

246 LOVES FARM ROAD
BLACKSBURG, SC 29702
(704) 467-7228 FIRM NO. C-TBD

REVISIONS

Table with 2 columns: Description, Date. No entries are visible.

DATE DECEMBER 7, 2018

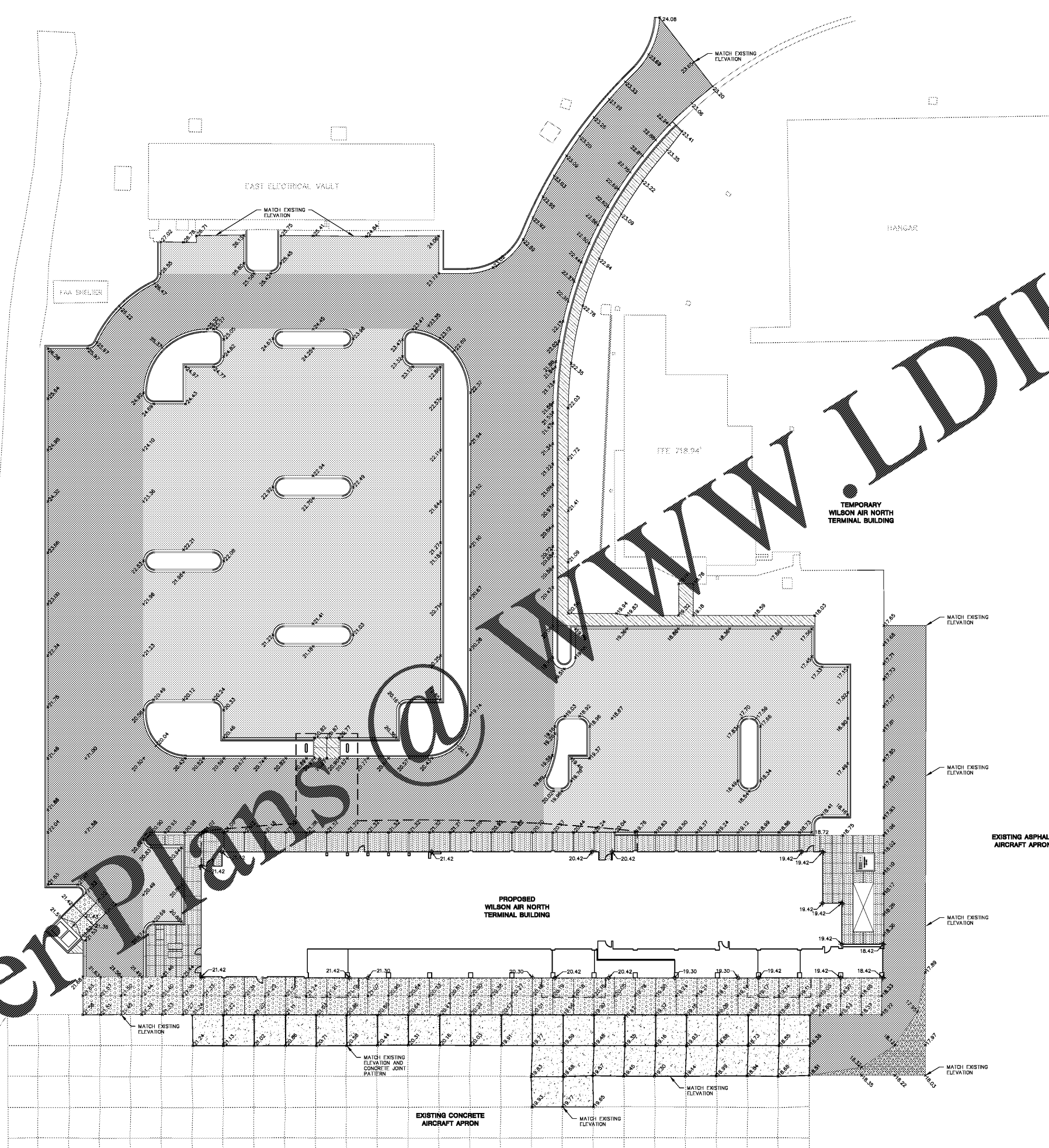
PROJECT NUMBER 9197-000

SHEET TITLE

PAVEMENT ELEVATION PLAN

SHEET NUMBER

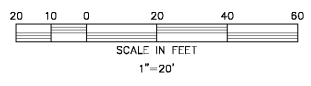
C-302



PAVEMENT ELEVATION PLAN NOTES:

- 1. SEVEN HUNDRED FEET (700') SHALL BE ADDED TO ALL SPOT ELEVATIONS ON THIS PLAN TO COINCIDE WITH THE PROJECT DATUM.
- 2. ALL CONNECTIONS TO EXISTING ASPHALT PAVEMENT SHALL BE MADE BY SAW CUTTING A NEAT VERTICAL FACE. TACK THE VERTICAL FACE PRIOR TO ASPHALT PAVING.
- 3. ELEVATIONS SHOWN ON EXISTING PAVEMENT SHALL BE CONSIDERED APPROXIMATE AND VERIFIED PRIOR TO ANY PAVING OPERATIONS.
- 4. ALL CONNECTIONS TO EXISTING PAVEMENT SHALL MATCH EXISTING PAVEMENT ELEVATION UNLESS OTHERWISE NOTED.
- 5. SEE ARCHITECTURAL PLANS FOR VARIABLE FINISHED FLOOR ELEVATIONS.

LEGEND table with 2 columns: Symbol, Description. Includes Proposed Elevation, Heavy Duty Bituminous Pavement, Standard Duty Bituminous Pavement, Heavy Duty Concrete Pavement, Light Duty Concrete Pavement, Asphalt Mill and Replace, 6" Thick Sidewalk, 4" Thick Sidewalk.



Order Plans @ www.LDILine.com