



GENERAL NOTES:
 1. CONNECT NEW LIGHTING FIXTURES TO EXISTING LIGHTING CIRCUITS MADE AVAILABLE DURING DEMOLITION.
 2. MODIFY THE CEILING GRID AS REQUIRED TO ACCOMMODATE THE NEW CLASSROOM PERIMETER LIGHTING. FILL GAPS WITH ACT TO MATCH EXISTING.

FULTON COUNTY SCHOOL SYSTEM
**RIVER EVES ELEMENTARY SCHOOL -
 RENOVATION**
 9000 EVES ROAD
 ROSWELL, GA 30076

PROJECT NO: 18046.00

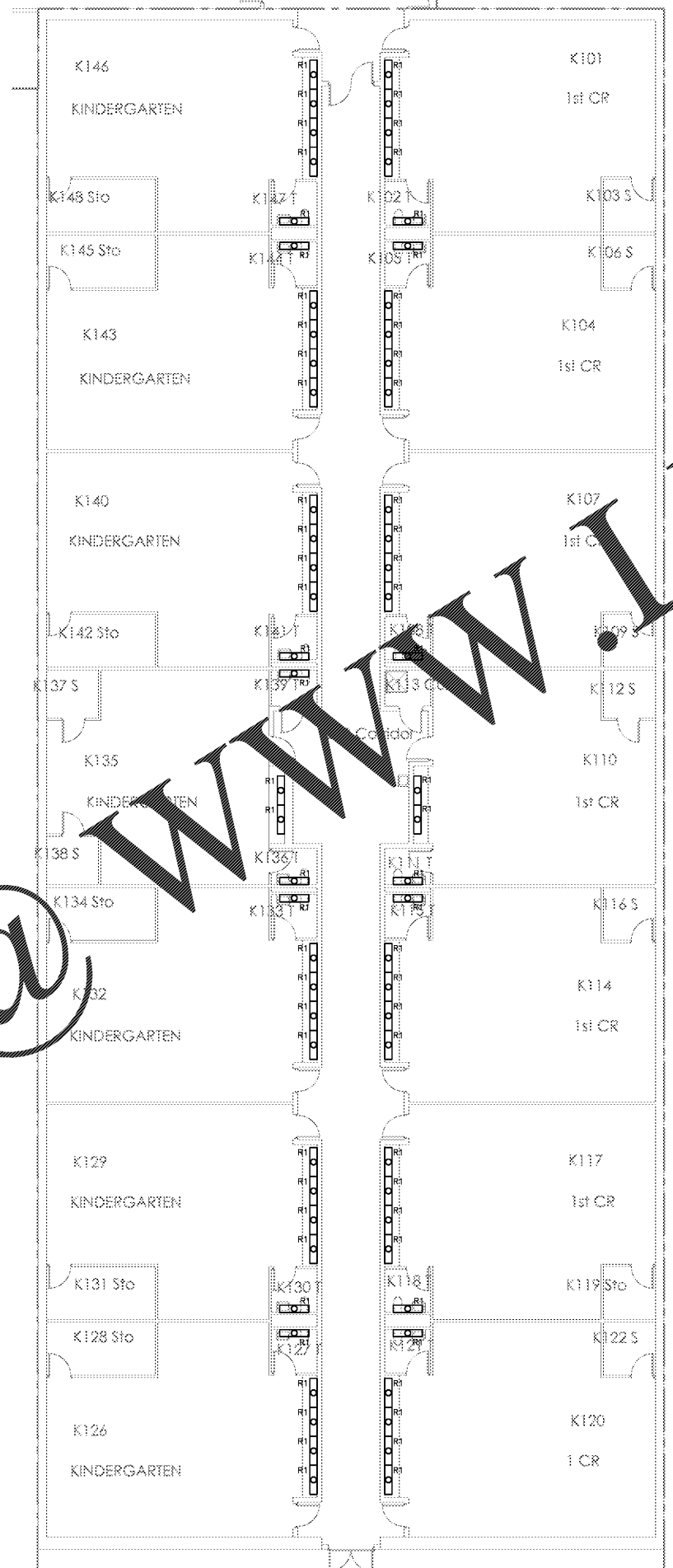
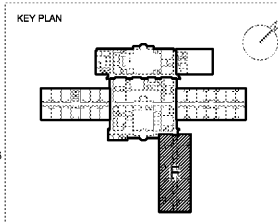
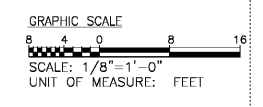
50% CD'S	08/07/2018
PERMIT SET	09/20/2018
95% CD'S	11/08/2018
BID SET	12/09/2018



CONTRACT DOCUMENT
 ISSUED FOR
 CONSTRUCTION

SHEET TITLE
**ELECTRICAL LIGHTING PLAN -
 SECTION F**

SHEET NUMBER
E201F



ELECTRICAL LIGHTING PLAN - SECTION F
 SCALE: 1/8" = 1'-0"

Order Plans @ www.LDILine.com