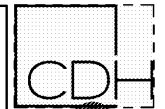


GENERAL NOTES:

1. CONNECT NEW LIGHTING FIXTURES TO EXISTING LIGHTING CIRCUITS MADE AVAILABLE DURING DEMOLITION.
2. FIXTURES DESIGNATED WITH AN "E" AT THE END OF THEIR DESIGNATION SHALL BE CONNECTED TO THE NEAREST EMERGENCY LIGHTING CIRCUIT. PROVIDE GENERATOR TRANSFER DEVICE (BY BODINE OR APPROVED EQUIVALENT) TO ALLOW FOR OVERRIDE OF LOCAL CONTROLS. STD SHALL BE SIZED FOR THE CIRCUIT.
3. MODIFY THE CEILING GRID AS REQUIRED TO ACCOMMODATE THE NEW CLASSROOM PERIMETER LIGHTING. FILL GAPS WITH ACT TO MATCH EXISTING.

DRAWING NOTES:

1. PROVIDE VACANCY TYPE OCCUPANCY SENSORS TO MANUALLY SWITCH FIXTURES OFF AFTER A PRE-SET ADJUSTABLE PERIOD. FIXTURES SHALL REQUIRE MANUAL ON BY EXISTING CONTROL DEVICES (SWITCHES). OCCUPANCY SENSORS SHALL BE WYED TO MATCH EXISTING LIGHTING CONTROL ZONES. CONTRACTOR SHALL ENSURE SENSORS PROVIDE FULL COVERAGE. MODIFY QUANTITY AND LOCATIONS AS NECESSARY (TYPICAL ALL).
2. DISCONNECT EXISTING S1 FIXTURES IN SAME LOCATIONS AS PREVIOUSLY DEMOLISHED CANOPY FIXTURES. DISCONNECT EXISTING MANUAL TIME BASED CONTROLS. NEW FIXTURES SHALL BE CONTROLLED BY EXISTING BMS SYSTEM. CONTRACTOR SHALL PROVIDE ALL NECESSARY EQUIPMENT, DEVICES, PARTS AND PIECES NECESSARY TO CONTROL THE LIGHTING FIXTURES VIA THE EXISTING BMS. CONTROL IS INTENDED TO BE TIME BASED VIA THE BMS TIMELOCK. PRIOR TO BID, CONTRACTOR SHALL FIELD VERIFY EXISTING BMS SYSTEM AND DETERMINE REQUIRED EQUIPMENT, DEVICES, MATERIALS AND SYSTEM MODIFICATIONS. COMPLETE SYSTEM SHALL BE INCLUDED IN BID.



FULTON COUNTY SCHOOL SYSTEM
RIVER EVES ELEMENTARY SCHOOL - RENOVATION
 9800 EVES ROAD
 ROSWELL, GA 30076

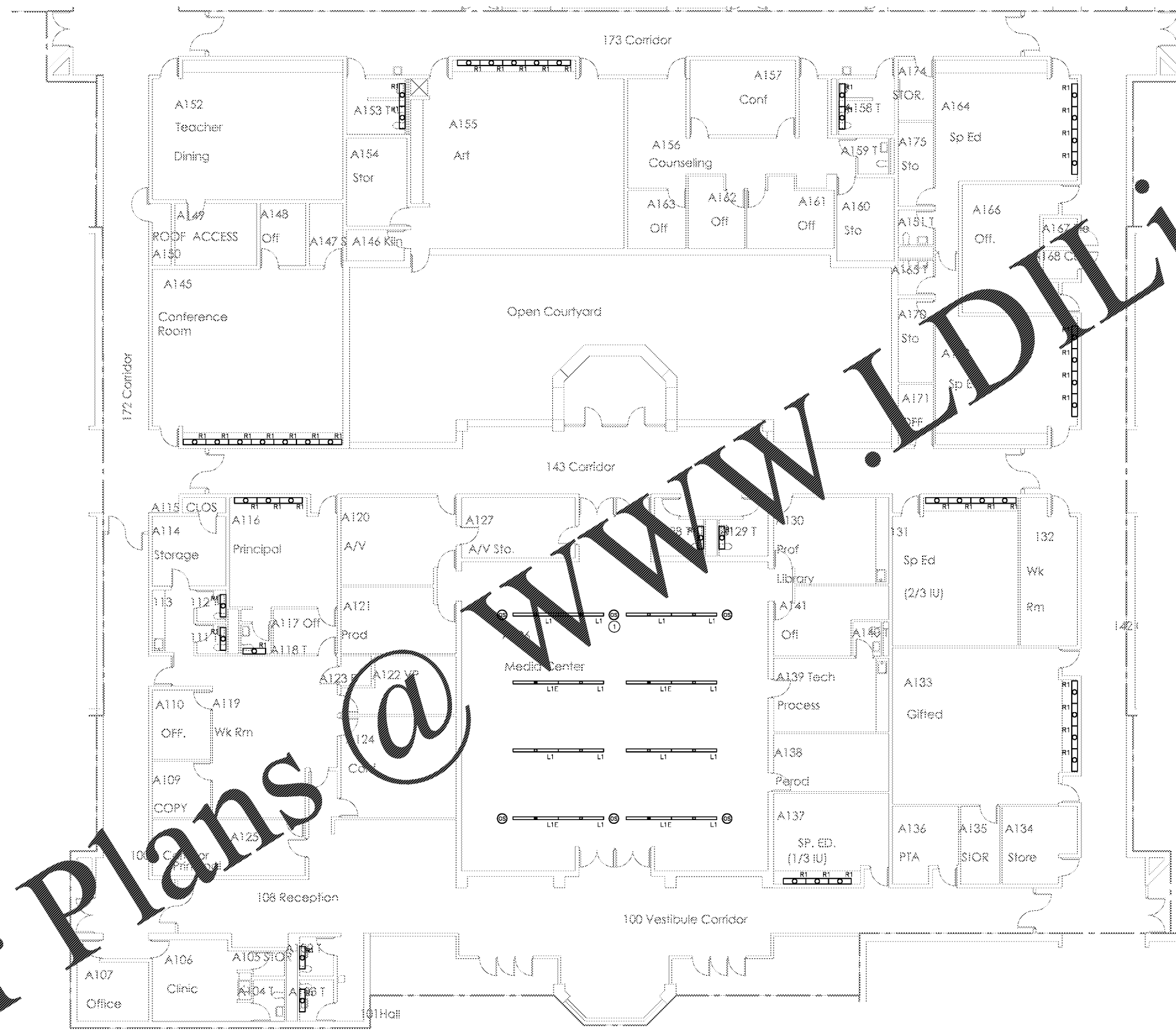
PROJECT NO:	18046.00
50% CD'S	08/07/2016
PERMIT SET	09/29/2016
95% CD'S	11/08/2016
BID SET	12/09/2016



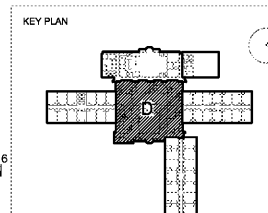
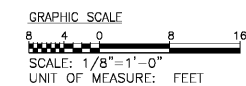
CONTRACT DOCUMENT
 ISSUED FOR
 CONSTRUCTION

SHEET TITLE
ELECTRICAL LIGHTING PLAN - SECTION D

SHEET NUMBER
E201D



ELECTRICAL LIGHTING PLAN -- SECTION D
 SCALE: 1/8" = 1'-0"



Order Plans @