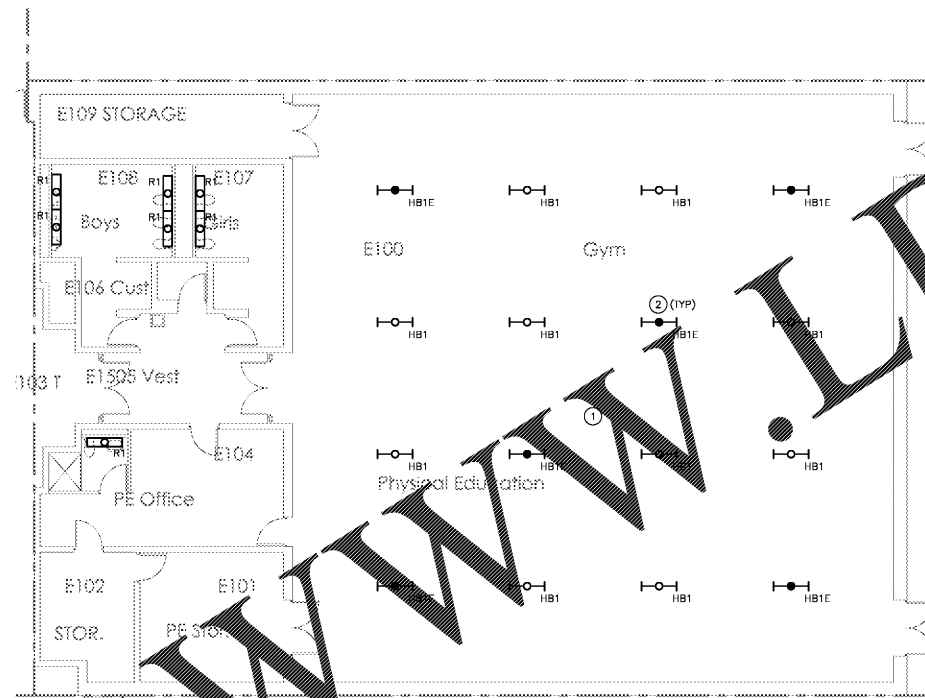


GENERAL NOTES:

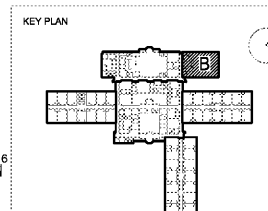
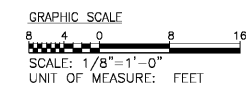
- CONNECT NEW LIGHTING FIXTURES TO EXISTING LIGHTING CIRCUITS MADE AVAILABLE DURING DEMOLITION.
- FIXTURES DESIGNATED WITH AN "E" AT THE END OF THEIR DESIGNATION SHALL BE CONNECTED TO THE NEAREST EMERGENCY LIGHTING CIRCUIT. PROVIDE GENERATOR TRANSFER DEVICE (BY BODINE OR APPROVED EQUIVALENT) TO ALLOW FOR OVERRIDE OF LOCAL CONTROLS. GTO SHALL BE SIZED FOR THE CIRCUIT.
- MODIFY THE CEILING GRID AS REQUIRED TO ACCOMMODATE THE NEW CLASSROOM PERIMETER LIGHTING. FILL GAPS WITH ACT TO MATCH EXISTING.

DRAWING NOTES:

- FIXTURES IN THE GYMNASIUM SHALL BE CONNECTED TO EXISTING KEY OPERATIONAL SWITCHES. EXISTING KEY OPERATIONAL SWITCHES SHALL BE MAINTAINED.
- FIXTURES DESIGNATED AS EMERGENCY SHALL BE CONNECTED TO EXISTING EMERGENCY CIRCUIT (HLS-8; OLD PANEL NAME). CONTRACTOR SHALL CONFIRM OPERATION OF EXISTING GENERATOR TRANSFER DEVICE. PROVIDE INSTALL BODINE OR SIMILAR GTO SIZED FOR APPLICATION IF MISSING OR INOPERABLE.



ELECTRICAL LIGHTING PLAN - SECTION B
SCALE: 1/8" = 1'-0"



PROJECT NO:	18046.00
50% CD'S	08/07/2016
PERMIT SET	09/29/2016
95% CD'S	11/08/2016
BID SET	12/09/2016

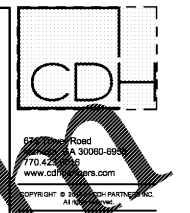


CONTRACT DOCUMENT
ISSUED FOR
CONSTRUCTION

SHEET TITLE
ELECTRICAL
LIGHTING PLAN -
SECTION B

SHEET NUMBER
E201B

FULTON COUNTY SCHOOL SYSTEM
**RIVER EVES ELEMENTARY SCHOOL -
RENOVATION**
9000 EVES ROAD
ROSWELL, GA 30076



Order Plans @

WWW.LDILine.com