

GENERAL NOTES:

1. CONNECT NEW LIGHTING FIXTURES TO EXISTING LIGHTING CIRCUITS MADE AVAILABLE DURING DEMOLITION.
2. FIXTURES DESIGNATED WITH AN "E" AT THE END OF THEIR DESIGNATION SHALL BE CONNECTED TO THE NEAREST EMERGENCY LIGHTING CIRCUIT. PROVIDE GENERATOR TRANSFER DEVICE (BY BODINE OR APPROVED EQUIVALENT) TO ALLOW FOR OVERRIDE OF LOCAL CONTROLS. STD SHALL BE SIZED FOR THE CIRCUIT.
3. MODIFY THE CEILING GRID AS REQUIRED TO ACCOMMODATE THE NEW CLASSROOM PERIMETER LIGHTING. FILL GAPS WITH ACT TO MATCH EXISTING.

DRAWING NOTES:

- 1 PROVIDE VACANCY TYPE OCCUPANCY SENSORS TO MANUALLY SWITCH FIXTURES OFF AFTER A PRESET ADJUSTABLE PERIOD. FIXTURES SHALL REQUIRE MANUAL ON BY EXISTING CONTROL DEVICES (SWITCHES). OCCUPANCY SENSORS SHALL BE ZONED TO MATCH EXISTING LIGHTING CONTROL ZONES. CONTRACTOR SHALL ENSURE SENSORS PROVIDE FULL COVERAGE. MODIFY QUANTITY AND LOCATIONS AS NECESSARY (TYPICAL ALL).
- 2 REMOVE NEW S1 FIXTURES IN SAME LOCATIONS AS PREVIOUSLY DEMOLISHED CANOPY FIXTURES. DISCONNECT EXISTING MANUAL TIME BASED CONTROLS. NEW FIXTURES SHALL BE CONTROLLED BY EXISTING BMS SYSTEM. CONTRACTOR SHALL PROVIDE ALL NECESSARY EQUIPMENT, DEVICES, PARTS AND PIECES NECESSARY TO CONTROL THE LIGHTING FIXTURES VIA THE EXISTING BMS. CONTROLS INTENDED TO BE TIME BASED VIA THE BMS TIMECLOCK. PRIOR TO BID, CONTRACTOR SHALL FIELD VERIFY EXISTING BMS SYSTEM AND DETERMINE REQUIRED EQUIPMENT, DEVICES, MATERIALS AND SYSTEM MODIFICATIONS. COMPLETE SYSTEM SHALL BE INCLUDED IN BID.



CD
770.425.1111
www.cd.com

FULTON COUNTY SCHOOL SYSTEM
RIVER EVES ELEMENTARY SCHOOL - RENOVATION
9800 EVES ROAD
ROSWELL, GA 30076

PROJECT NO: 18046.00

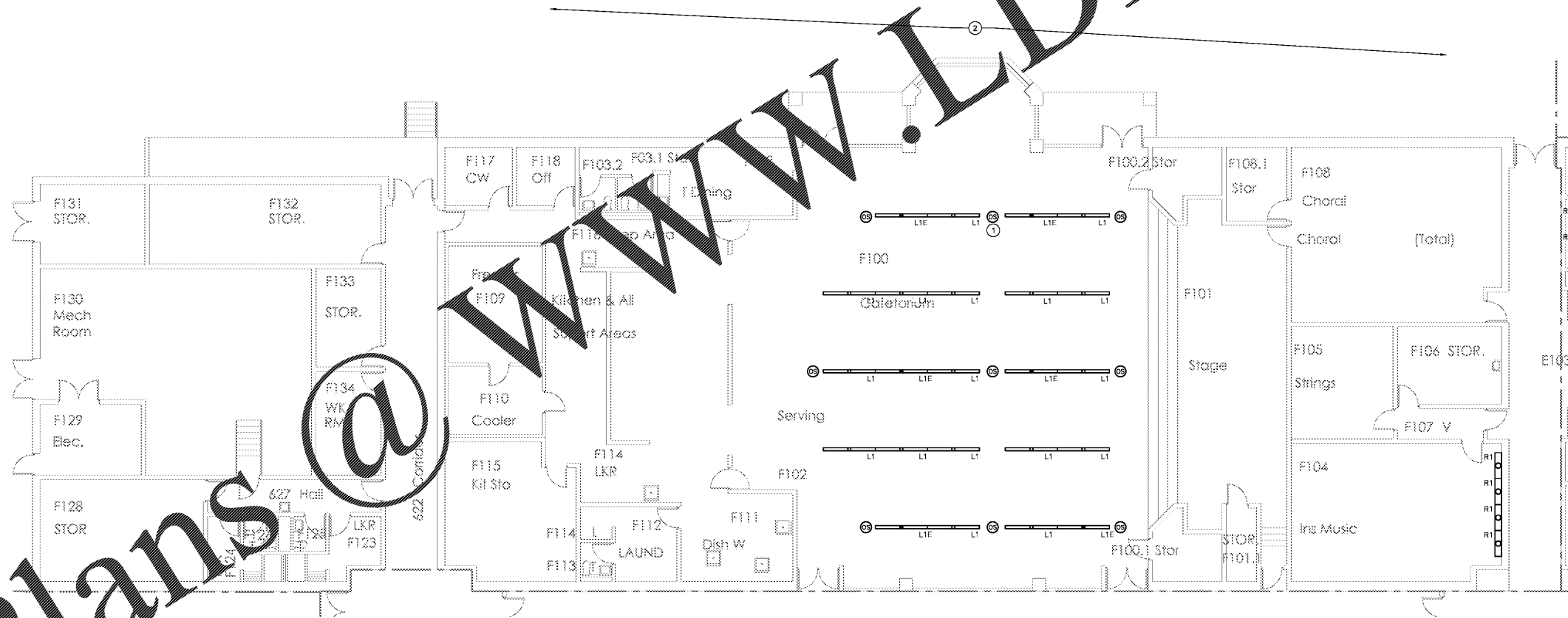
50% CD'S	08/07/2016
PERMIT SET	09/29/2016
95% CD'S	11/08/2016
BID SET	12/09/2016



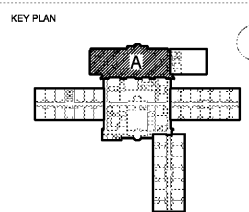
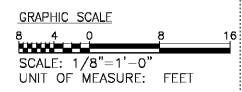
CONTRACT DOCUMENT
ISSUED FOR
CONSTRUCTION

SHEET TITLE
ELECTRICAL LIGHTING PLAN - SECTION A

SHEET NUMBER
E201A



ELECTRICAL LIGHTING PLAN - SECTION A
SCALE: 1/8" = 1'-0"



Order Plans @ www.LDILine.com