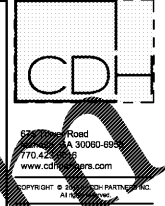


GENERAL NOTES:

1. CONTRACTOR SHALL FIELD VERIFY EXACT CIRCUITS SERVING EXISTING MECHANICAL EQUIPMENT.
2. COORDINATE SAFETY SWITCH, MANUAL MOTOR STARTER AND OTHER WIRING DEVICES WITH FIELD CONDITIONS. INSTALL DISCONNECTING MEANS AS CLOSE TO EQUIPMENT AS POSSIBLE. DISCONNECTS SERVING ABOVE CEILING EQUIPMENT SHALL BE INSTALLED ABOVE CEILING.

DRAWING NOTES:

1. CONNECT NEW FAN COIL UNIT TO EXISTING CIRCUIT. PROVIDE SAFETY SWITCH AS INDICATED.
2. CONNECT NEW ROOF MOUNTED EXHAUST FAN TO EXISTING CIRCUIT. PROVIDE SAFETY SWITCH AS INDICATED.
3. CONNECT NEW BOILER TO EXISTING CIRCUIT. PROVIDE MANUAL MOTOR STARTER SWITCH AS INDICATED.
4. CONNECT NEW PUMP TO EXISTING CIRCUIT. EXISTING STARTER IS EXISTING TO REMAIN.
5. CONNECT NEW AIR COOLED CHILLER TO EXISTING CIRCUIT. REFER TO E501 RISER DIAGRAM FOR ADDITIONAL INFORMATION.
6. CONNECT NEW ELECTRIC HEATING UNITS TO EXISTING CIRCUIT. BOB HAS INTEGRAL DISCONNECTING MEANS. COORDINATE WITH APPROVED SHOP DRAWINGS. PROVIDE AND INSTALL DISCONNECTING MEANS AS NECESSARY.
7. PROVIDE NEW 100kW/125kVA NATURAL GAS GENERATOR SET IN SOUND ATTENUATED, WEATHERPROOF ENCLOSURE WITH FIELD CONDITIONS. REFER TO SHEET E501 FOR ONE-LINE DIAGRAM. GENERATOR SHALL BE PROVIDED WITH CONTACTS FOR EMS "TROUBLE" AND "RUN" SIGNAL. PROVIDE 1-INCH CONDUIT TO EMS SYSTEM CONTROLLER. CABLING AND CONNECTION SHALL BE INSTALLED BY DIVISION 23.
8. CONNECT NEW BATTERY CHARGER TO EXISTING CIRCUIT.
9. FIELD VERIFY EXACT LOCATION FOR NEW LIFE SAFETY AIS.
10. CIRCUIT BP-1 AND BP-2 TOGETHER. PROVIDE NEW 20A/3P CIRCUIT BREAKER IN EXISTING PANEL L4 SECTION 2. CONDUCTORS SHALL BE 3#12 + 1#12 GROUND IN 3/4-INCH CONDUIT.



FULTON COUNTY SCHOOL SYSTEM
RIVER EVES ELEMENTARY SCHOOL - RENOVATION
 9000 EVES ROAD
 ROSWELL, GA 30076

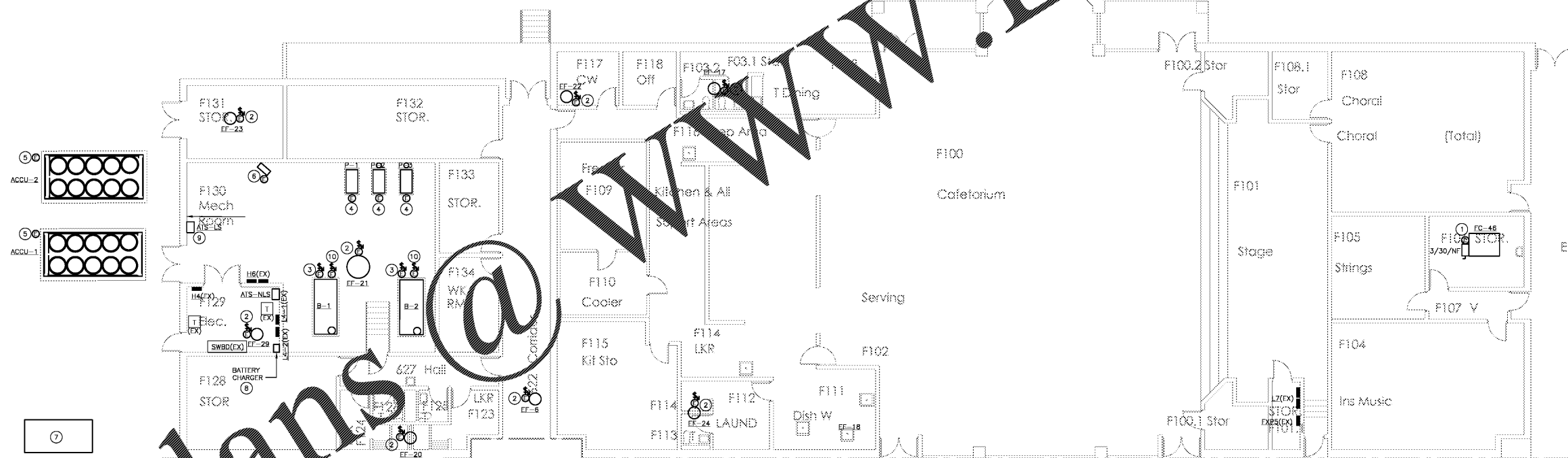
PROJECT NO:	18046.00
50% CD'S	08/07/2016
PERMIT SET	09/29/2016
95% CD'S	11/08/2016
BID SET	12/09/2016



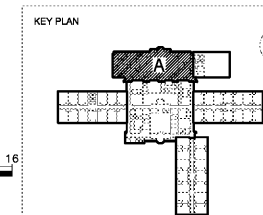
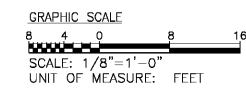
CONTRACT DOCUMENT
 ISSUED FOR
 CONSTRUCTION

SHEET TITLE
ELECTRICAL POWER PLAN - SECTION A

SHEET NUMBER
E101A



ELECTRICAL POWER PLAN - SECTION A
 SCALE: 1/8" = 1'-0"



Order Plans @ www.LDILinc.com