

GENERAL NOTES:

- 1. DEMOLISH LIGHTING FIXTURES INDICATED ON THIS SHEET. FIELD VERIFY EXACT LOCATIONS AND QUANTITIES.
- 2. MAINTAIN EXISTING LIGHTING CIRCUITS TO BE REUSED FOR NEW LIGHTING FIXTURES.
- 3. MAINTAIN CONTROL DEVICES AND WIRING DEVICES TO BE REUSED FOR NEW LIGHTING FIXTURE CONTROL.



www.cd.com
30080-01
770.420-0100

FULTON COUNTY SCHOOL SYSTEM
**RIVER EVES ELEMENTARY SCHOOL -
RENOVATION**
9800 EVES ROAD
ROSSELL, GA 30076

PROJECT NO: 18046.00

50% CD'S	08/07/2016
PERMIT SET	09/29/2016
95% CD'S	11/08/2016
BID SET	12/09/2016

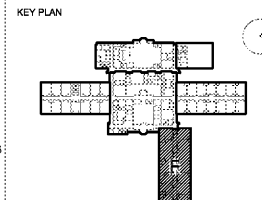
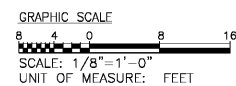


CONTRACT DOCUMENT
ISSUED FOR
CONSTRUCTION

SHEET TITLE
**ELECTRICAL LIGHTING PLAN -
SECTION F -
DEMOLITION**

SHEET NUMBER

ED201F



Order Plans

www.LDILine.com

ELECTRICAL LIGHTING PLAN -- SECTION E -- DEMOLITION
SCALE: 1/8" = 1'-0"